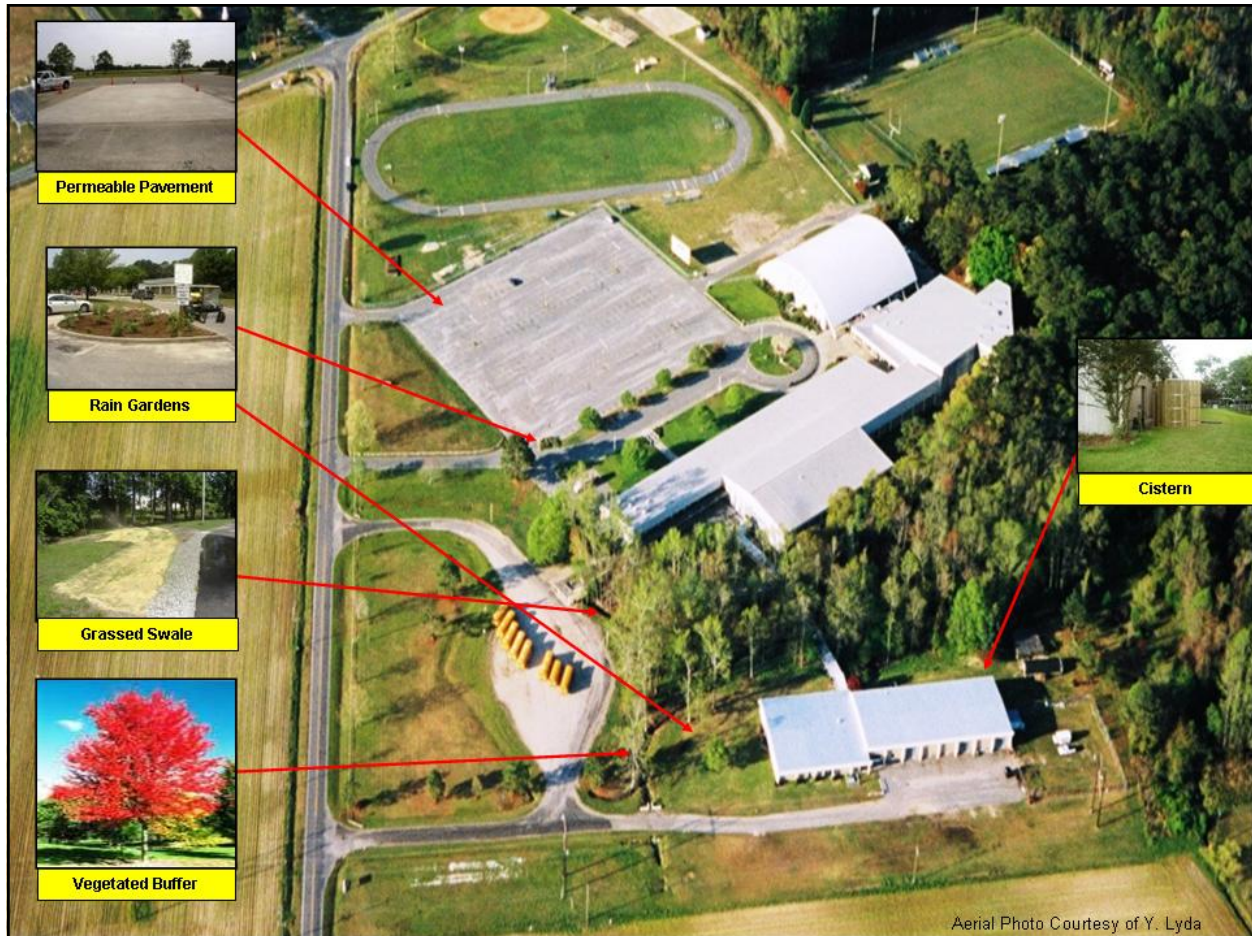


Williamston High School Low Impact Development Demonstration Project

Funded by:
Albemarle-Pamlico National Estuary Program

Cooperators:
North Carolina State University
NC Cooperative Extension
Town of Williamston
Williamston High School
Mid East RC&D



Aerial Photo Courtesy of Y. Lyda



NCSU-Cooperative Extension, Town of Williamston, Williamston High School, Mid-East RC&D

Williamston High School Low Impact Development Demonstration Project

The Williamston High School Low Impact Development project is an innovative retrofit demonstration site located in rural Martin County of eastern, NC. The project began with the efforts of Dr. Tom Ward to create a sustainable community in eastern North Carolina. Dr. Tom Ward, Sustainability Coordinator for the Town of Williamston, in cooperation North Carolina State



University Cooperative Extension, wrote a grant to the Albemarle-Pamlico National Estuary Program, which subsequently, was funded. The project includes installation of two rain gardens, permeable pavement, a grassed swale, a riparian buffer, and a water harvesting system to capture runoff from the rooftop of the Vocational Agriculture Building.

The integrated management practices were installed as a part of a planning and development technique called Low Impact Development (LID). LID seeks to mimic the natural hydrology of a site by encouraging infiltration (allowing stormwater runoff to soak into the ground). The project included many cooperators, especially Mid-East RC&D, which provided the educational signage for each of the practices.

For further information on this project or other Low Impact Development projects, please visit www.wen.ncsu.edu or you may contact Dwane Jones at 252-747-5831 or dwane_jones@ncsu.edu.

Williamston High School Low Impact Development Demonstration Project



Rain Garden One (before)



(after)



Rain Garden Two (before)



(after)



Traditional Asphalt Pavement (before)



Permeable Pavement Installation

Williamston High School Low Impact Development Demonstration Project



Stream bank: Very Little Riparian Corridor



Installation of Riparian Buffer



Erosion at Bus Parking Lot (before)



Installation of Grassed Swale for Infiltration



Area for Installation of Cistern (before)



Cistern Installation

Williamston High School Low Impact Development Demonstration Project



J.B. Coltrain, Martin County Extension Director & Tom Ward, Sustainability Coordinator



Mitch Woodward of Cooperative Extension excavates rain a rain garden at Vocational Agriculture Building



Permeable Pavement



Autumn Blaze Maple



Picture of Autumn Blaze Maple



65 Gallon Water Tank Purchased for Watering Plants



65 Gallon Water Tank