

MEMORANDUM

TO: Tar-Pamlico River Basin Regional Council Members

FROM: Joan Giordano, Outreach Coordinator

SUBJ: Next Meeting - June 15, 2001

DATE: June 7, 2001

Hi Folks:

Included in this mailing are the minutes from our last meeting, the agenda for our upcoming meeting, and directions to the Wedgewood Golf Club and Bucky Robbins' camp on Toisont Swamp.

Our SPECIAL THANKS go to Bucky and Mrs. Robbins for hosting our lunch following the meeting. Please make every effort to attend. I look forward to seeing each of you there next Friday!

TAR-PAMLICO REGIONAL COUNCIL

Wedgewood Public Golf Course
Wilson, North Carolina

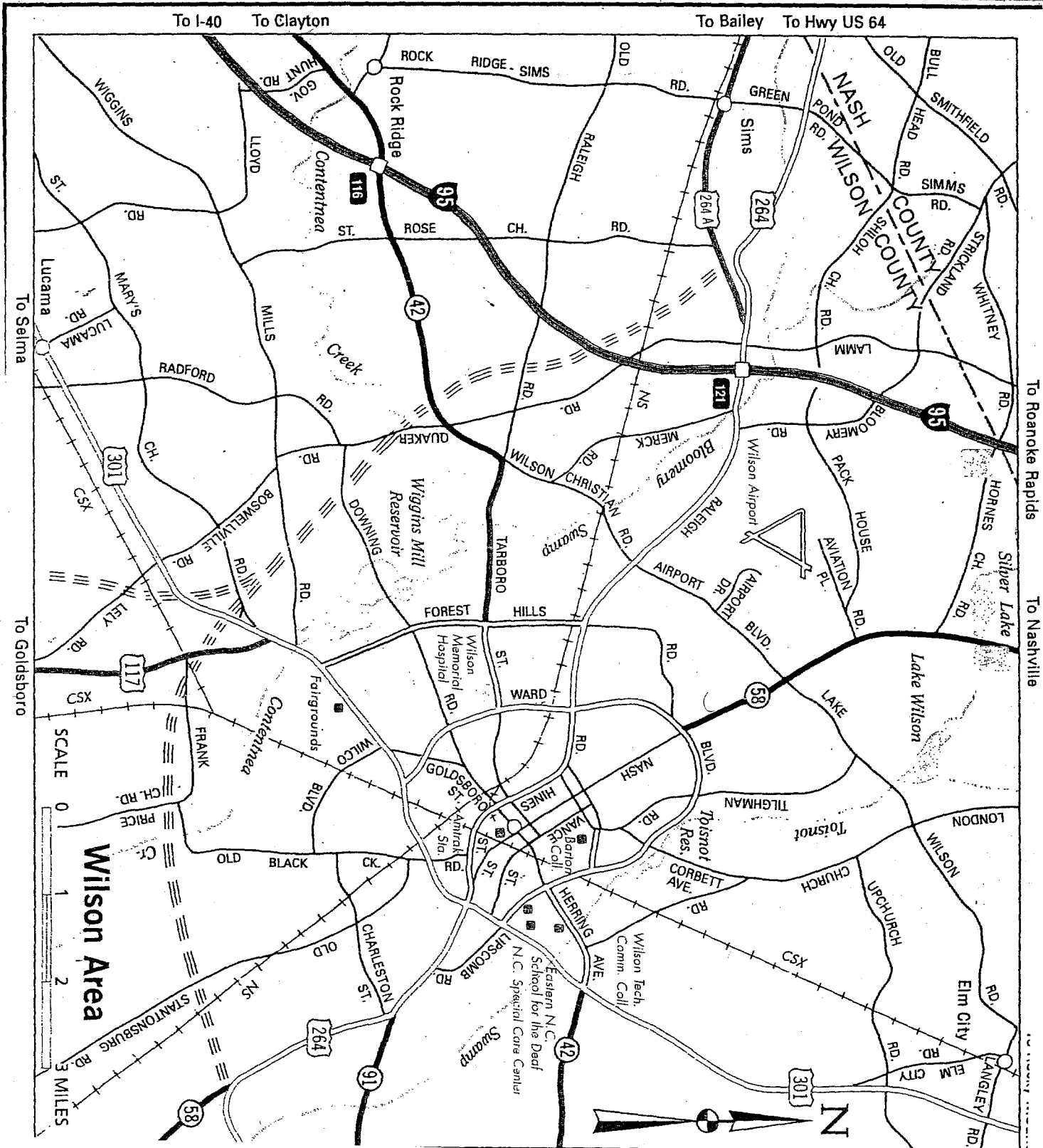
JUNE 15, 2001

AGENDA

10:00	Welcome and Call to Order	Paul Blount, Vice-Chair
10:05	Roll Call	Joan Giordano, APNEP
10:10	Approval of Minutes from April 27 th Meeting in Louisburg	Paul
10:15	Sedimentation and Erosion Control in North Carolina	Caroline Medlin Division of Land Resources
10:45	Discussion	ALL
11:15	Components of FY2002 APNEP Work Plan	Guy Stefanski, APNEP
11:30	<u>Old Business:</u> 1- Time for New Officers 2- Demonstration Project Update	ALL
11:50	Plans for Next Meeting	ALL
12:00	ADJOURN FOR LUNCH	

Luncheon will be served, compliments of Grady Robbins, at his campsite
in Toisnot Swamp just beyond Lake Wilson. Everyone is invited.
You don't want to miss it!

Directions: Wedgewood is located where the NS railroad crosses the Old Stantonburg Rd. From Hwy. 301, at the intersection of Old Black Creek Rd. (there's a stop light) turn east onto Old Black Creek Rd. Go 2/10 mi. and turn left onto Old Stantonburg Rd. Go 2.1 mi. to Wedgewood on left before tracks. If weather is appropriate, a picnic-style lunch will be served at the Robbins' farm nearby.





ALBEMARLE-PAMLICO NATIONAL ESTUARY PROGRAM

Public Involvement Office

MEMORANDUM

TO: Tar-Pamlico River Basin Regional Council Members

FROM: Joan Giordano, Outreach Coordinator

SUBJ: Minutes (June 15, 2001)

DATE: August 2, 2001

Hi Folks:

I'm enclosing the minutes from our last meeting held on June 15th at the Wedgewood Golf Club in Wilson. I know y'all join me in extending a hearty THANK-YOU to Bucky and Mrs. Robbins for the great lunch they served us on Toisnot Swamp following the business portion of our meeting.

Please read the enclosed carefully, especially Attachment C. This arrays, more fully, the exhibit proposals I briefly outlined during our meeting on the 15th. Having a good sense of what the proposed exhibits will entail will aid in envisioning their installation. Remember, we're holding our next meeting at the Estuarium on August 24th!

I look forward to seeing you there and, as always, thank you for your continued commitment and diligence to protecting the beautiful and natural resources of eastern North Carolina.

ALBEMARLE-PAMLICO NATIONAL ESTUARY PROGRAM

Tar-Pamlico River Basin Regional Council

Wedgewood Public Golf Club

Wilson, NC

June 15, 2001

MINUTES

The meeting was called to order by Vice-Chairman Paul Blount at 10:05am. He welcomed those present and asked for self-introductions. (See Attachment A). He then asked for a motion to approve the minutes from the last meeting ((4/27/01). Joe Shearon moved the minutes be accepted as mailed and Jenny Gray seconded. Motion carried.

Guy Stefanski introduced Caroline Medlin from the Division of Land Resources located in Raleigh. Ms. Medlin gave a presentation on the Sedimentation Pollution Control Act of 1973, the regulatory basis for the work undertaken by her Division. She reported that sedimentation is the #1 pollutant (by volume) in North Carolina, adding that agriculture is exempt from the Act. (See Attachment B.) Discussion followed Ms. Medlin's presentation.

During the ensuing discussion, Mary Jane Jennings inquired whether the TPRBRC should contact the NC General Assembly to request the hiring of more inspectors. Given the prevailing fiscal condition of the State, the idea was put aside for the time being.

Guy Stefanski then outlined the draft APNEP Workplan for FY'01-'02. Joan Giordano reported on proposed outreach projects, the general approval of which was made by the Coordinating Council, when they developed and approved the Workplan. (See Attachment C). Joan asked that RC members acquaint themselves with the various proposals, and come prepared to

discuss them at the next meeting. Questions requiring clarification of a few Workplan items were entertained.

OLD BUSINESS

Guy reminded the group that it was time again to select new RC officers. He mentioned that Jeff Furness, RC Secretary, had agreed to serve in that capacity for another term. He asked for nominations for the offices of Chairman, and Vice-Chairman. There were none forthcoming and the discussion turned to the general issue of vacancies and non-participation on the RC and the Coordinating Council. Joan Giordano mentioned that this has been a chronic ailment of the APNEP program and that the issue was being addressed through the FY'00-'01 Workplan.

Charles Smith recommended sending a letter to every county and city within the basin showing the TPRBRC's recommendations and positions taken. He felt this might be a way of generating interest and therefore boost attendance and participation at meetings. Because the hour was growing late, discussion was tabled.

Mary Jane Jennings recommended a letter be sent to support the renovations of the lodge at Lake Mattamuskeet in Hyde Co. It was unclear to whom such a letter should be sent and action on the recommendation was tabled as well.

The next meeting date was set for August 24th at the NC Estuarium located in Washington, NC.

The meeting was adjourned and attendees traveled to Toisnot Swamp where they were treated to a luncheon, courtesy of Bucky and Mrs. Robbins.

Attendance Sheet

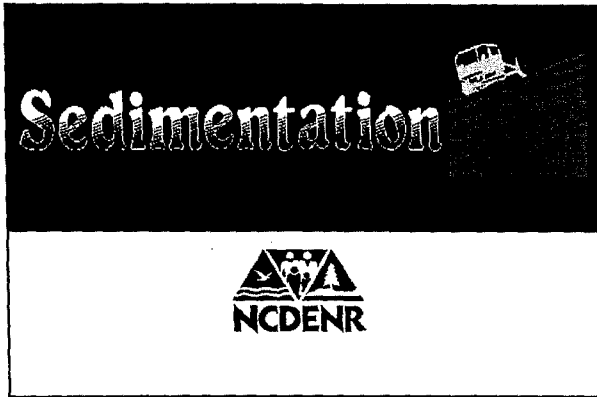
Attachment A

June 15, 2001

Wedgewood Golf Course
Wilson

Tar-Pan Regional Council

Paul Blount	Rocky Mt	252-972-1290
Bucky Robbins	Wilson	252-237-8326
MARY JANE JENNING	Franklin	919-853-2917
Joe Shearon		919 496 3256
Jenny Gray		252-473-1101 x206
Allen Keibace		252-257-3114
Matt Livingston		919 496-2909
JOAN GIORDANO		(552) 946-6181 x769
DAN WYNNE	pitt	75-2-0486
ERLINE WYNNE	pitt	75-2-0486
Charles L. Smith	Wilson City	252-246-4959
Guy E. Stefanski	APNEP	(919) 733-5083 ext. 585
Caroline Medlin	NCDENR-DLR	919-733-4574
Tabitha T. Brown	NCDENR-DLR	919-733-4574
ROB ROBBINS	COUNTY OF WILSON	252-399-2826
Ellis Willford	Wilson Co. Management	252-399-2803



Sedimentation: The Facts

- It destroys fish and their food supply, from mountain trout streams to coastal sounds.
- It destroys wildlife habitat.
- It carries harmful chemicals and pollutants to waterways.
- It reduces property values.

Sedimentation: The Facts

- It fills streams and lakes used for water supply, increasing the cost of water treatment.
- It fills streams and lakes used for power generation, increasing the cost of electric power.
- It fills streams and lakes, increasing the chances of flooding.

Background and Historical Perspective



Sedimentation Pollution Control Act of 1973

- The Act is performance oriented.
- 4 mandatory standards

Mandatory Standards

- Buffer zones along watercourses sufficient to control visible siltation within the first 25% of the buffer zone closest to the land disturbing activity.
- Land disturbing activities of an acre or more must have an erosion and sedimentation control plan approved by the Land Quality Section.

Mandatory Standards

- Stabilize exposed slopes within 15 working days or 30 calendar days after any phase of grading, whichever is shorter.
- Land disturbing activities shall install erosion and sedimentation control devices and practices sufficient to retain sediment on site, and provide permanent ground cover within 15 working days or 90 calendar days, whichever is shorter.

Exemptions

- Land disturbing activities strictly for agricultural purposes
- Forestry sites following approved Best Management Practices (BMPs)
- Activities permitted under the Mining Act of 1971
- During emergencies for activities essential to human life

North Carolina Administrative Code
Title 15A, Department of Environment
and Natural Resources
Chapter 4, Sediment Control

Rule became effective February 1, 1976

Basic Control Objectives

- Identify critical areas
- Limit exposed areas
- Limit time of exposure
- Control surface water
- Control sedimentation
- Manage storm water runoff

Design Standards

- Measures must be designed for the 10 year storm event that will produce the maximum peak rate of runoff.

Sensitive Watersheds

- Measures must be designed for the 25 year storm event that will produce the maximum peak rate of runoff.
- No more than 20 acres may be developed at one time without written approval of the Director of the Division of Land Resources.
- Basins should be designed for the 70% settling efficiency of the 40 micron particle.

Administrative Code

- Persons conducting land-disturbing activity shall take all reasonable measures to protect all public and private property from damage caused by such activities.
- The person conducting the land-disturbing activity must maintain erosion and sediment control measures.

Administrative Code

- The Land Quality Section or a Delegated Local Government may require additional measures if necessary.
- Sets up the procedure for an Administrative Hearing to appeal civil penalties.

The North Carolina Sedimentation Control Commission

- Rep of the NC League of Municipalities and the NC Association of County Commissioners
- Rep from NC Home Builders Association
- Rep from Carolinas Branch, Associated General Contractors of America
- Rep from a NC Public Utilities Company
- Water Resources Research Institute Director

The North Carolina Sedimentation Control Commission (cont)

- Rep from Mining Commission
- Rep from Soil and Water Conservation Commission
- Rep from Environmental Management Commission
- NCSU Soil Science faculty member
- 2 non-governmental reps for conservation interest
- Professional Engineer of NC

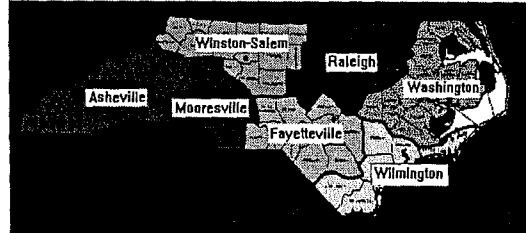
The North Carolina Sedimentation Control Commission (cont)

- The Sedimentation Control Commission is a consensus of the development community and conservation interest.
- The Sedimentation Control Commission invites public input.
- The Sedimentation Control Commission places an emphasis on education.

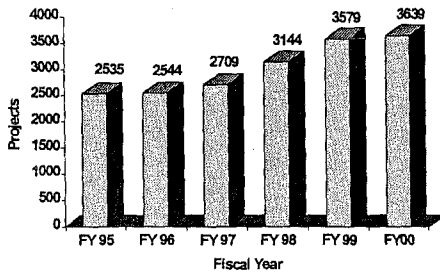
State Program Overview



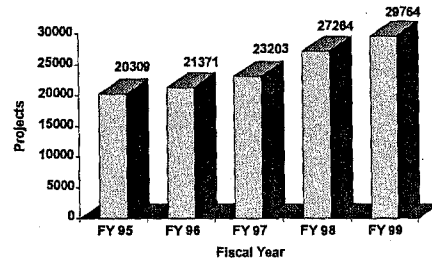
DENR Regions



New Projects Per Year



Disturbed Acres Per Year



For Additional Information

NCDENR, Land Quality Section
 1612 Mail Service Center
 Raleigh, NC 27699
 (919) 733-4574
 Or toll-free
 1-866-STOPMUD
www.dlr.enr.state.nc.us

Disturbed Acres per Region

Fiscal Year 2000-2001

Regional Office	Disturbed Acres
Asheville	2,485.40
Fayetteville	5,015.05
Mooreville	8,799.05
Raleigh	3,627.04
Washington	3,112.49
Wilmington	3,163.64
Winston-Salem	3,359.31
Total	29,561.98

Note: These are not exact values, as the fiscal year had not been completed when the data was compiled. Current data that was available from July 1, 2000 to May 30, 2001 was utilized to produce this estimation.

Fiscal Year 1999-2000

Regional Office	Disturbed Acres
Asheville	3,247.76
Fayetteville	4,263.95
Mooreville	8,549.91
Raleigh	5,163.48
Washington	3,797.44
Wilmington	4,781.74
Winston-Salem	4,285.41
Total	34,089.69

Fiscal Year 1998-1999

Regional Office	Disturbed Acres
Asheville	2,370.21
Fayetteville	3,716.12
Mooreville	6,540.93
Raleigh	8,574.90
Washington	7,637.86
Wilmington	5,881.69
Winston-Salem	4,011.92
Total	38,733.63

Regional Outlook of Inspectors and Notice of Violations Issued per Region

Full Time Equivalent (FTE) per Region During Fiscal Year of 2000-2001

Regional Office	FTE
Asheville	9.4
Fayetteville	5.31
Mooreville	8.35
Raleigh	6.82
Washington	4.15
Wilmington	3.35
Winston-Salem	6.62
Total	44

Notice of Violation for the Fiscal Year of 2000-2001

Regional Office	FTE	Inspections	NOVs issued
Asheville	9.4	3,068	112
Fayetteville	5.31	2,323	97
Mooreville	8.35	2,667	84
Raleigh	6.82	2,212	71
Washington	4.15	939	83
Wilmington	3.35	1,480	88
Winston-Salem	6.62	3,788	149
Total	44	16,477	684

Note: These are not exact values but estimates as the fiscal year had not been completed when the data was compiled. Current data that was available from July 1, 2000 to May 30, 2001 was utilized to produce this estimation.

Would YOU Like To Help Control Erosion and Sedimentation In Your County?

Establish Your Own Ordinance-- Create a Local Program!

- Under the Sedimentation Pollution Control Act of 1973 local governments can set up their own sediment and erosion control programs. Refer to G.S. 113A-54; 113A-60
- Local Ordinances can provide greater control over erosion and sedimentation control in your area.
- Local Ordinances can be more strict than state law.
- Local governments that wish to adopt local ordinances must have their program approved by the North Carolina Sedimentation Control Commission.
- Effective control of erosion and sedimentation can reduce costs of water treatment and power production and protect the natural wildlife habitat in your community.

- If you are interested in your own Local Erosion and Sediment control program contact:

Division of Land Resources, Land Quality Section

NCDENR

1612 Mail Service Center

Raleigh, NC 27699-1612

(919) 733-4574

www.dlr.enr.state.nc.us

NEW EXHIBIT OPTIONS - NORTH CAROLINA ESTUARIUM

Potential exhibits are listed below in rough order of preference and/or affordability. Various factors such as space, potential for quality, ease of installation, and long-term operational costs could affect the feasibility of the ideas listed and our interest in pursuing them.

1) Computer-based exhibit that allows visitors to manipulate a SLOSH program or other flood modeler to demonstrate surge impacts from various storm scenarios in a particular area (e.g., Washington, NC)

Notes:

- If the program doesn't need to be heavily customized, the \$12,000 budget is probably adequate.
- Associated text and graphics could stress the importance of avoiding development in flood-prone areas. Photos and information about recent hurricanes could also be added to program to enhance visitor interest. (Current Estuarium exhibitry was designed just as the onslaught of recent hurricanes began and so includes little information about them).
- Good hardware is essential so the exhibit could handle heavy use with minimal breakdown.

2) Cross-section model of an estuarine benthic layer, having side-by-side comparisons of a healthy layer and one affected by heavy metal contamination

Notes:

- This is the simplest proposal and a top quality display could likely be done within the budget.
- We do not currently have an exhibit devoted specifically to the benthic layer.
- The reasons we don't have an exhibit devoted specifically to the benthic layer are: (1) describing its function and importance in 50 words or less is nearly impossible; and (2) the public is bored by mud. The key would be linking it to the food chain.
- One of APES' most important research findings was the significant heavy metal contamination in some parts of the A-P. This could create greater awareness of the value of and impact of NEP-funded research.

3) Interactive exhibit depicting wind tide impacts, including water movement and transport of fish larvae/fry within estuarine system

Notes:

- A good exhibit of this type would probably cost significantly more than \$12,000 since it would involve prototyping and a lot of moving parts.
- We currently have a good interactive exhibit on wind tides, but it does not deal at all with larval transport. Some type of retrofit that substantially enhances the existing exhibit may be feasible within the budget.

4) Interactive exhibit that demonstrates the value of wetlands in filtering pollutants

Notes:

- A good exhibit of this type may cost significantly more than \$12,000.
- There is a good interactive model on wetland filtering at Goose Creek State Park that we would not want to replicate too closely.

5) Computer-based exhibit displaying information from existing water quality monitoring stations in the A-P (such as the MOD/MON ferry-based monitors or USGS remote monitors), so visitors can see WQ conditions in real time

Notes:

- If this involved dial-up access it would stress staff resources and ratchet up the potential for technical problems. However, USGS or DWQ might be willing to donate substantial technical advice up front so that we could negate some of those problems.
- There is no better way to help the public understand the basics of water quality than letting them see actual measurements in real time, plus letting them see trends over long periods.
- If the monitoring system we connect to is replaced or de-funded, the exhibit may be made obsolete overnight.
- Continual or frequent on-line access could involve long-term expenses we can't absorb.

6) New introductory film to welcome visitors and give them an overview of the A-P system

Notes:

- A really good film would easily cost \$20,000 or more. However, the impact of a good film on the visitor experience is very high. If we could either add our own funds or find a matching grant, this would probably provide the biggest bang for the buck.
- Our current introductory film is excellent but is becoming dated and physically worn. We are interested in updating it.

ALBEMARLE-PAMLICO NATIONAL ESTUARY PROGRAM

Tar-Pamlico River Basin Regional Council

Wedgewood Public Golf Club

Wilson, NC

June 15, 2001

MINUTES

The meeting was called to order by Vice-Chairman Paul Blount at 10:05am. He welcomed those present and asked for self-introductions. (See Attachment A). He then asked for a motion to approve the minutes from the last meeting ((4/27/01). Joe Shearon moved the minutes be accepted as mailed and Jenny Gray seconded. Motion carried.

Guy Stefanski introduced Caroline Medlin from the Division of Land Resources located in Raleigh. Ms. Medlin gave a presentation on the Sedimentation Pollution Control Act of 1973, the regulatory basis for the work undertaken by her Division. She reported that sedimentation is the #1 pollutant (by volume) in North Carolina, adding that agriculture is exempt from the Act. (See Attachment B.) Discussion followed Ms. Medlin's presentation.

During the ensuing discussion, Mary Jane Jennings inquired whether the TPRBRC should contact the NC General Assembly to request the hiring of more inspectors. Given the prevailing fiscal condition of the State, the idea was put aside for the time being.

Guy Stefanski then outlined the draft APNEP Workplan for FY'01-'02. Joan Giordano reported on proposed outreach projects, the general approval of which was made by the Coordinating Council, when they developed and approved the Workplan. (See Attachment C). Joan asked that RC members acquaint themselves with the various proposals, and come prepared to

discuss them at the next meeting. Questions requiring clarification of a few Workplan items were entertained.

OLD BUSINESS

Guy reminded the group that it was time again to select new RC officers. He mentioned that Jeff Furness, RC Secretary, had agreed to serve in that capacity for another term. He asked for nominations for the offices of Chairman, and Vice-Chairman. There were none forthcoming and the discussion turned to the general issue of vacancies and non-participation on the RC and the Coordinating Council. Joan Giordano mentioned that this has been a chronic ailment of the APNEP program and that the issue was being addressed through the FY'00-'01 Workplan.

Charles Smith recommended sending a letter to every county and city within the basin showing the TPRBRC's recommendations and positions taken. He felt this might be a way of generating interest and therefore boost attendance and participation at meetings. Because the hour was growing late, discussion was tabled.

Mary Jane Jennings recommended a letter be sent to support the renovations of the lodge at Lake Mattamuskeet in Hyde Co. It was unclear to whom such a letter should be sent and action on the recommendation was tabled as well.

The next meeting date was set for August 24th at the NC Estuarium located in Washington, NC.

The meeting was adjourned and attendees traveled to Toisnot Swamp where they were treated to a luncheon, courtesy of Bucky and Mrs. Robbins.

North Carolina
Department of Environment and Natural Resources

Michael F. Easley, Governor
William G. Ross Jr., Secretary

Charles H. Gardner, P.G., P.E.
Director and State Geologist



Division of Land Resources

June 28, 2001

Joan Giordano
Albemarle-Pamlico NEP
DENR-DWQ
943 Washington Square Mall
Washington, NC 27889

Dear Joan:

In addition to the slide presentation I have attached the information that was requested at the June 15th Tar-Pamlico Regional Council meeting. If you have any further questions please feel free to contact me.

Sincerely,

A handwritten signature in cursive script that reads 'Caroline' is positioned above the typed name.

Caroline Medlin, E.I.T.
Sediment Education Specialist

