



Strategic Habitat Areas within the APNEP Region

Christine Jensen

NC Division of Marine Fisheries

Albemarle-Pamlico Ecosystem Symposium
November 20, 2013



Coastal Habitat Protection Plan

- Arose out of frustration over habitat and water quality issues
- Mandated by the Fisheries Reform Act – 1997
- **Goal 2 – Identify, designate, and protect strategic habitat areas**

**North
Carolina
Coastal
Habitat
Protection
Plan**

By
Anne S. Deaton¹, William S. Chappell¹, Kevin Hart¹,
Jessi O'Neal¹, and Brian Boutin²

¹ North Carolina Department of Environment and Natural
Resources, Division of Marine Fisheries
² The Nature Conservancy

December 2010

What are Strategic Habitat Areas?

- Subset of the coastal ecosystem
- Best of the best
- Relatively unaltered
- Maintains biodiversity and ecological functions
- Network of habitat connections



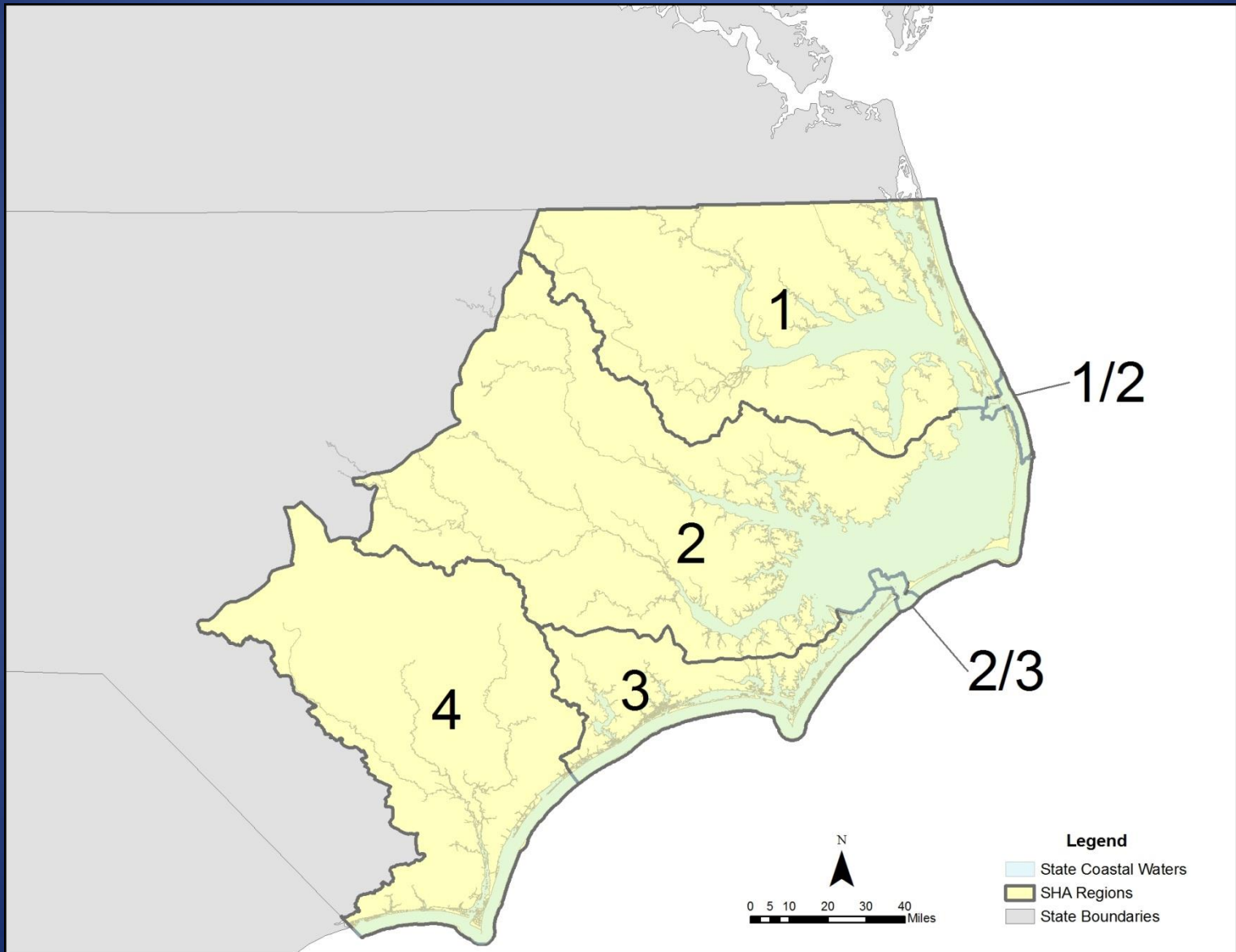
Strategic Habitat Areas (SHAs)

Definition:

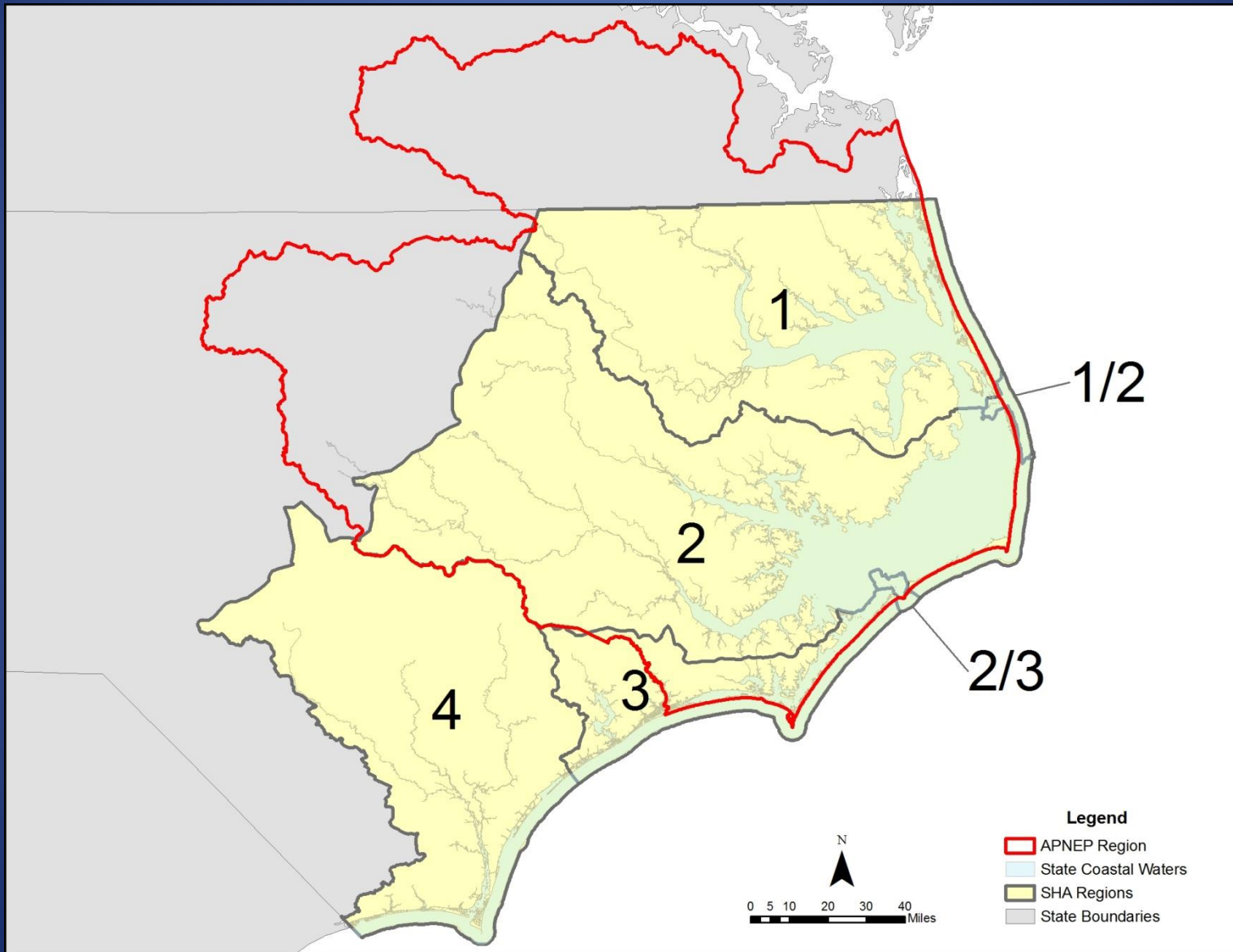
“Specific locations of individual fish habitats or systems of fish habitats that have been identified to provide exceptional habitat functions or that are particularly at risk due to imminent threats, vulnerability, or rarity.”



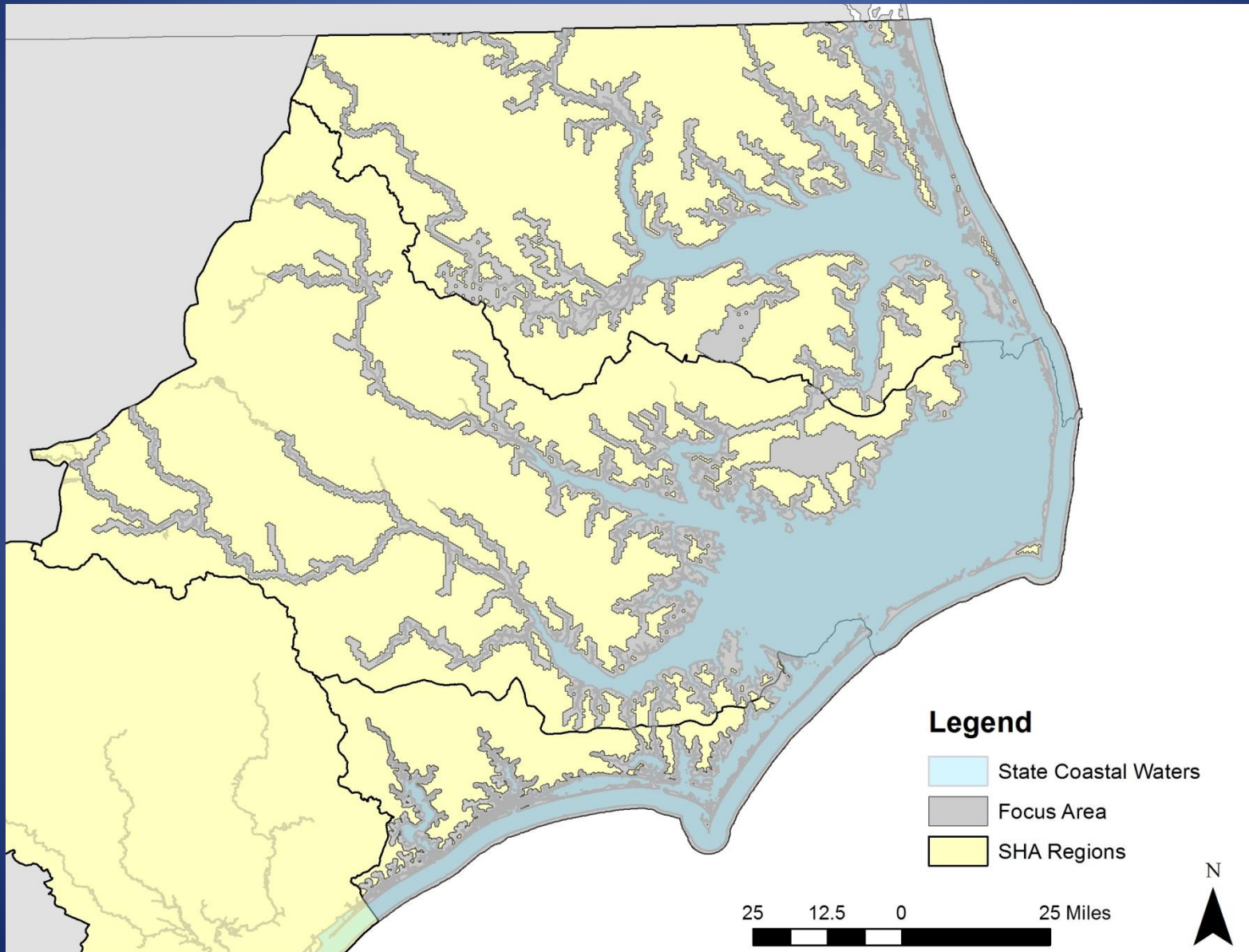
SHA Regional Boundaries



Regional Boundaries



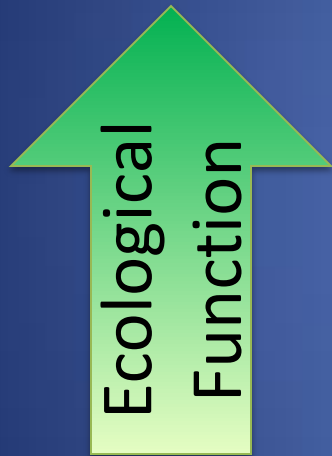
Focus Area



Strategic vs. Non-strategic



Alteration Level



Ecological Function

	Low	Moderate
High	SELECTED Exceptional Protect	SELECTED At Risk Restore/Enhance
Low	NOT SELECTED Status Quo Rely on existing protections	

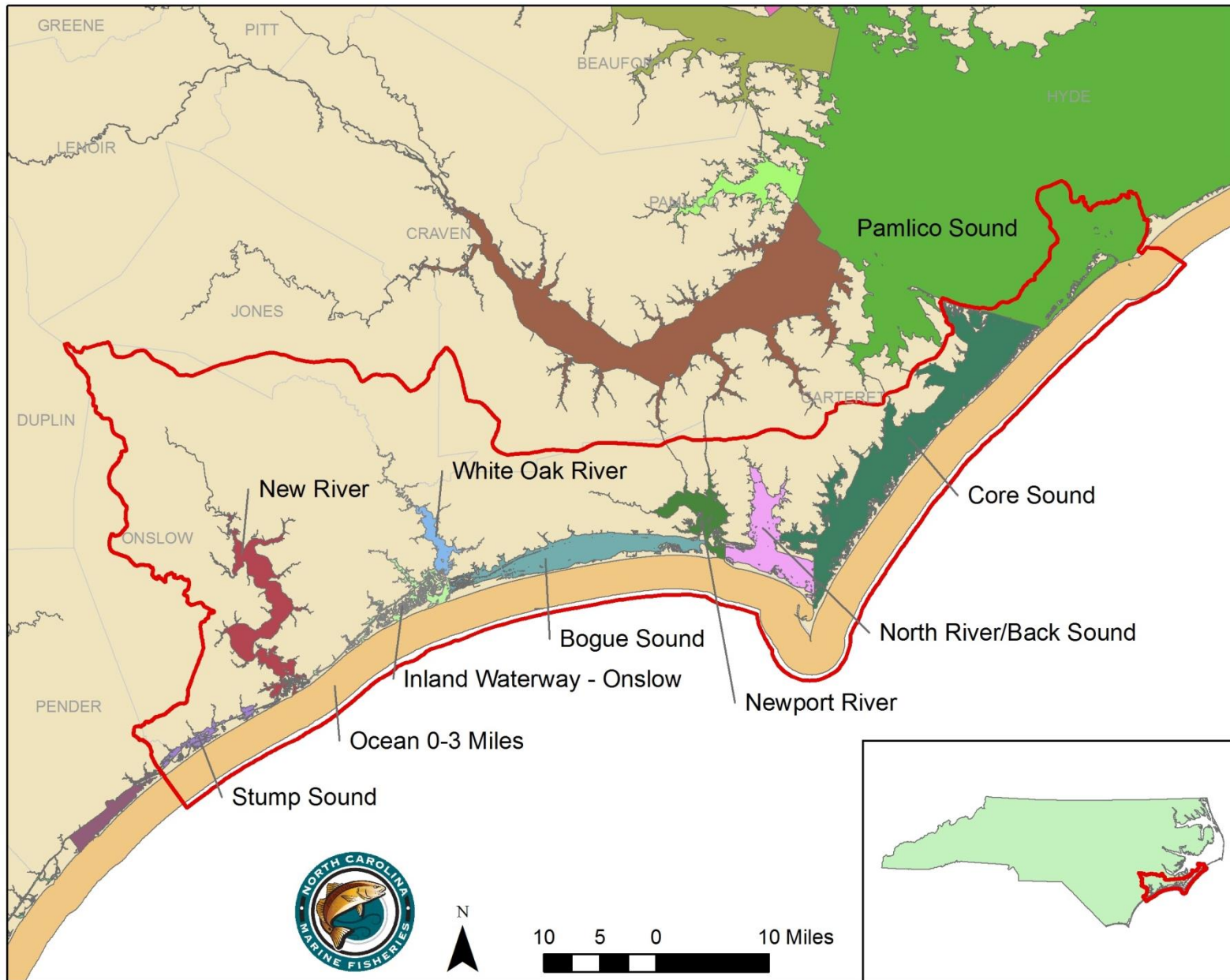
Ecological Function = Service provided to fish or environment (e.g., spawning/nursery area)

Alteration = disturbance by human activity

How Do We Select SHAs?

- Goal is to protect and enhance coastal fisheries
 - Identify priority fisheries
 - Determine what habitats are important to those fisheries for their various life history stages
(NATURAL RESOURCE TARGETS)
 - Determine how much of each habitat should be included in the SHA network
(REPRESENTATION LEVEL)

Strategic Habitat Area Region 3



Region 3 Priority Fisheries

- Oysters
- Hard clams
- Bay scallops
- Shrimp
- Blue crab
- Southern flounder
- Spotted seatrout
- Red drum
- Weakfish
- Spot
- Gag
- Black sea bass

Natural Resource Targets

Water column



Shell bottom



Hard bottom



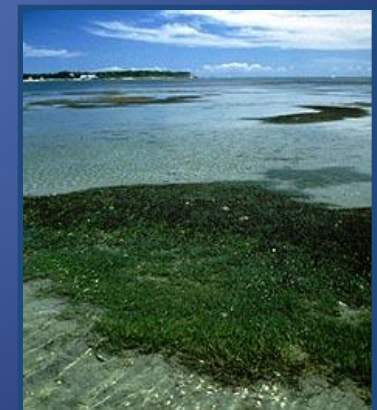
Wetlands



Soft bottom



Submerged
Aquatic
Vegetation



Target Representation Levels

Selected based on functional importance, rarity, sensitivity, vulnerability, and/or historical losses of habitat.

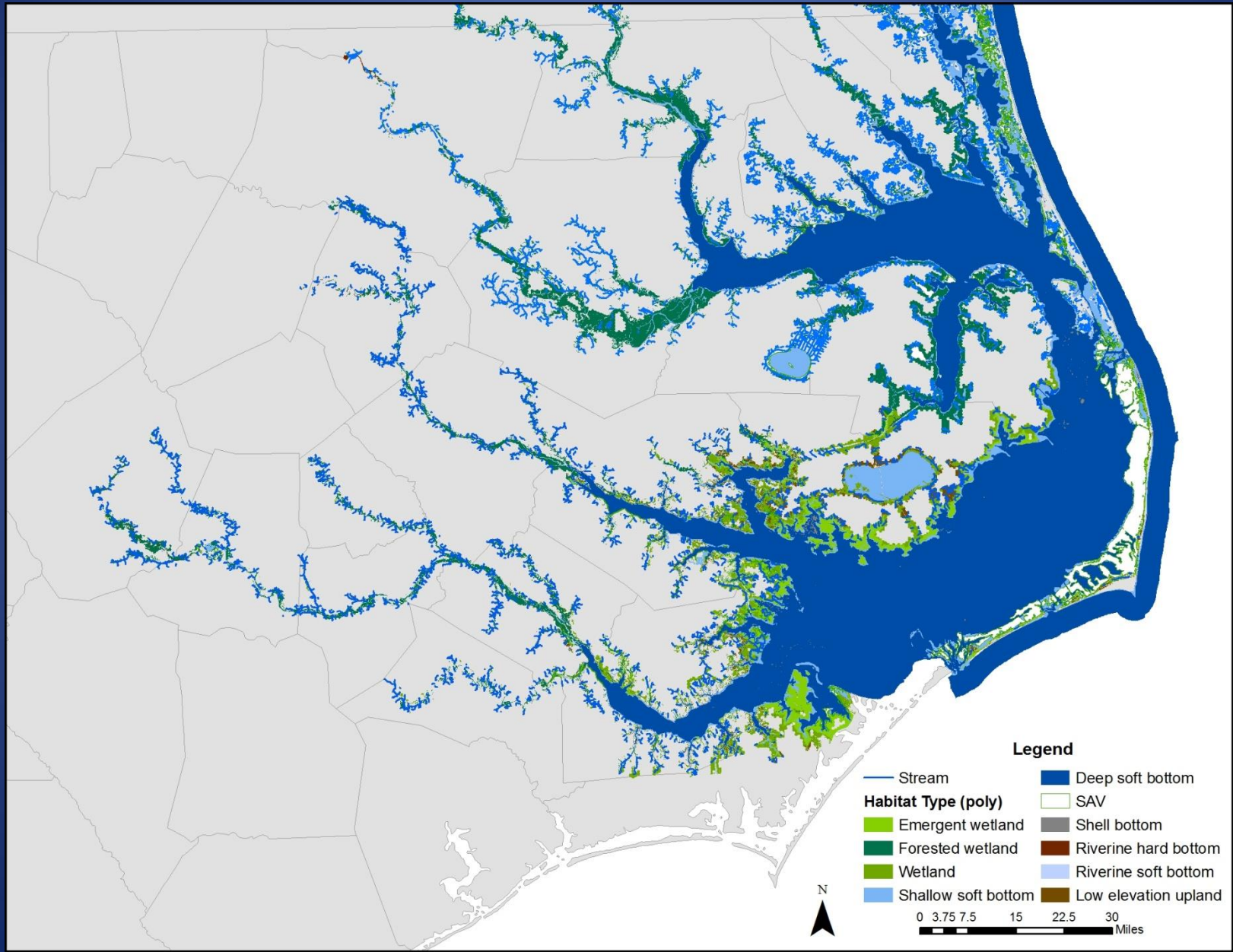
High representation (100-60%)

- Riverine hard bottom
- High salinity SAV
- Low salinity SAV
- Intertidal & subtidal shell bottom
- Ocean hard bottom

Moderate rep. (20-15%)

- Freshwater forested wetlands (wet, mostly wet)
- Freshwater marsh (wet, mostly wet)
- Wetland edge
- Salt/brackish marsh
- Intertidal & subtidal shell bottom (low density)
- Freshwater, estuarine, and marine soft bottom (0-3 ft)
- Intertidal soft bottom
- Low elevation streams

Natural Resource Targets



Region 3 Alteration Factors

- Human activities that impact the coastal environment:
 - Hydrological
 - Water Quality
 - Physical

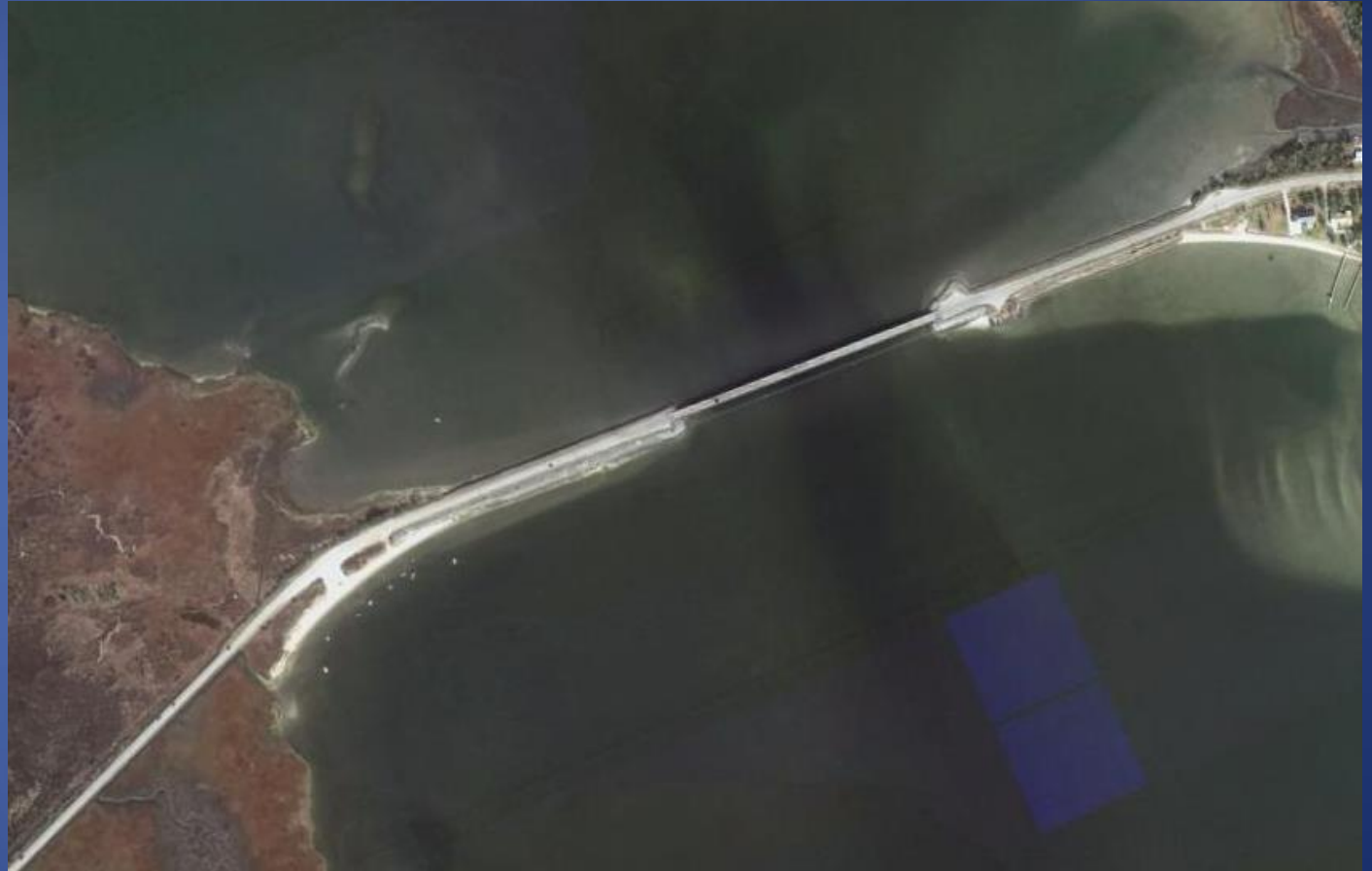
Hydrological Alterations

Culverts



Hydrological Alterations

Bridge
Restrictions



Hydrological Alterations

Impoundments



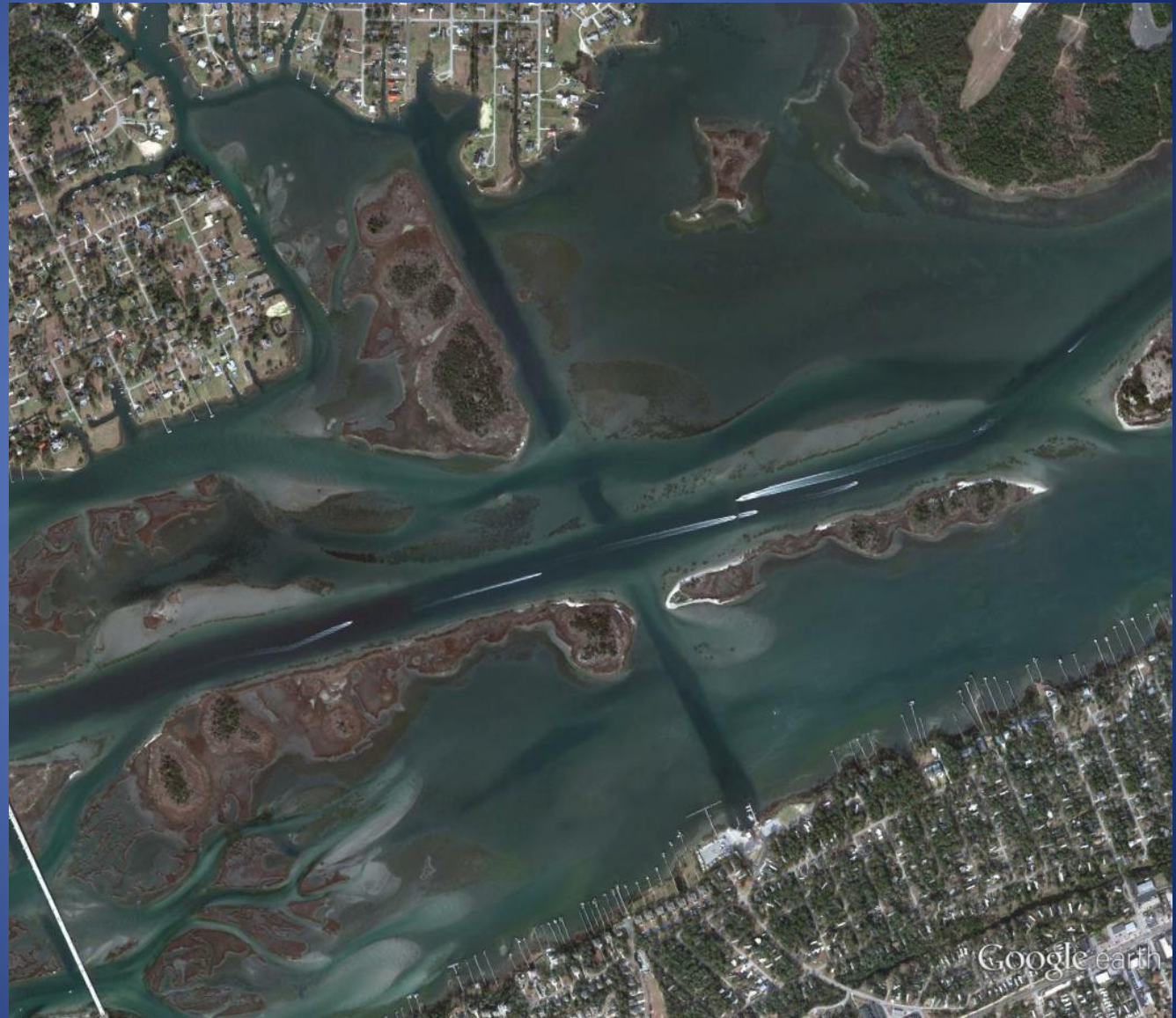
Hydrological Alterations

Bulkheads



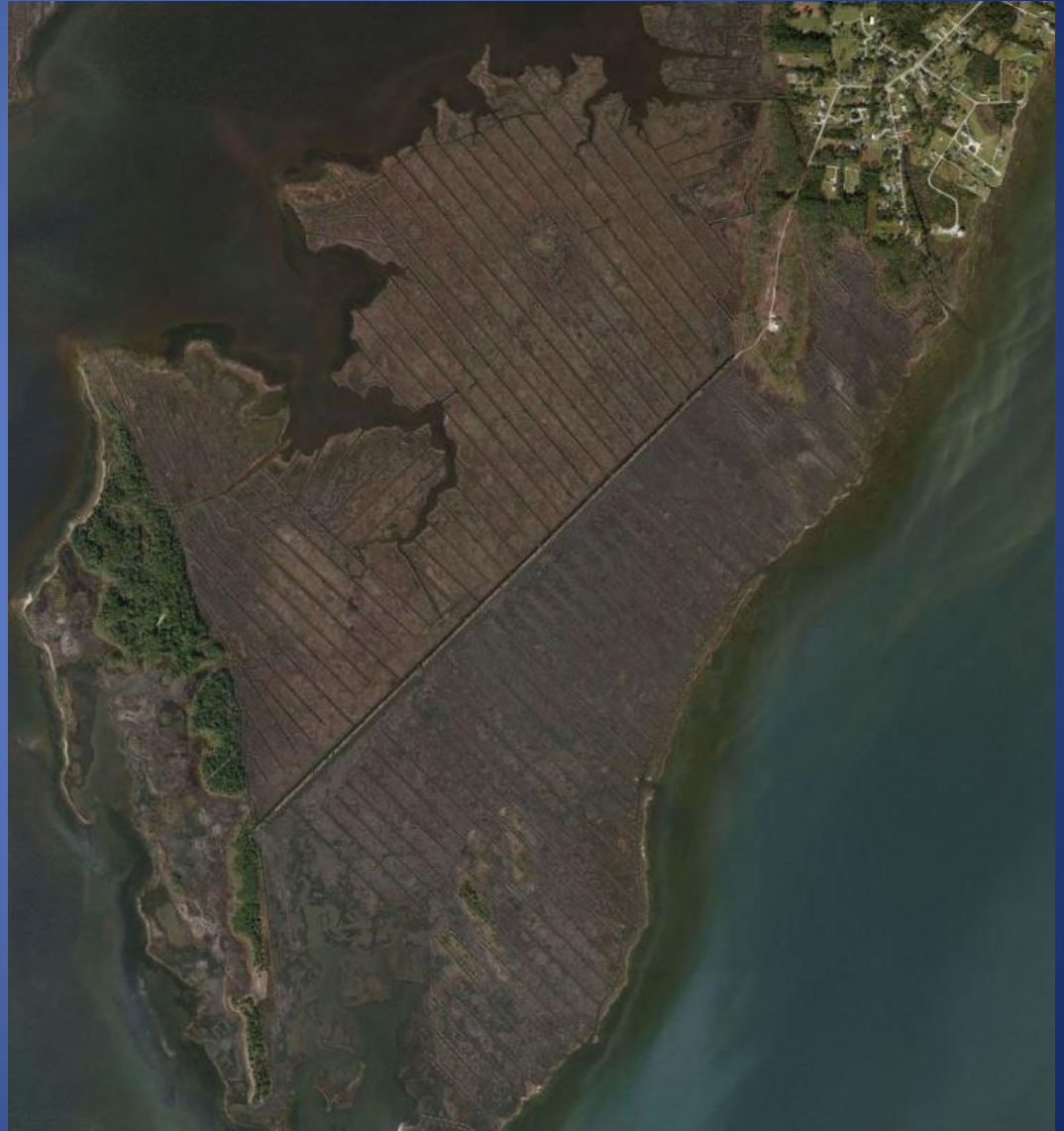
Hydrological Alterations

Dredged
Channels



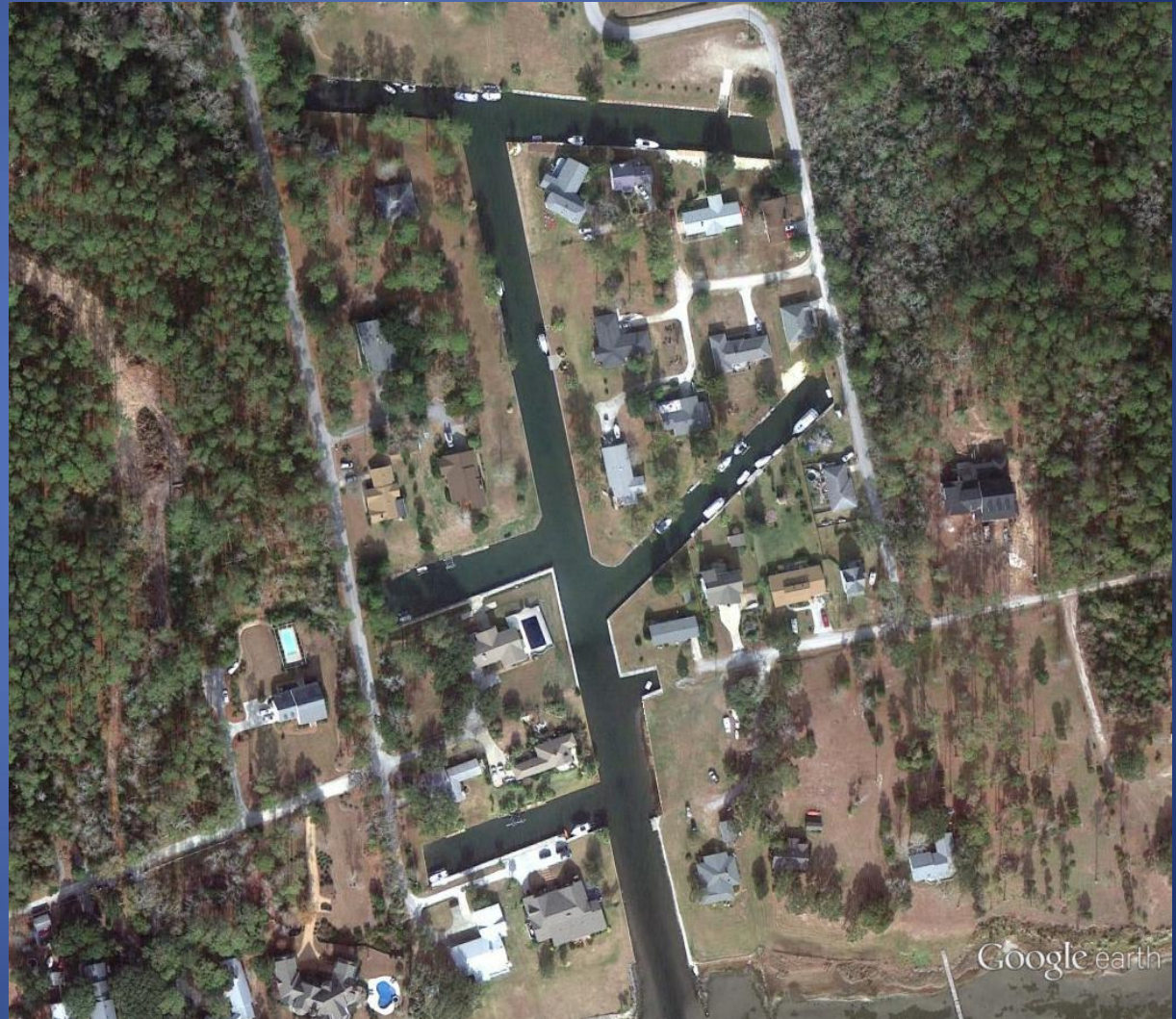
Hydrological Alterations

Ditched/Drained



Hydrological Alterations

Canals &
Boat Basins



Water Quality Alterations

Major &
Minor
NPDES



Water Quality Alterations

Marinas



Water Quality Alterations

Animal
Operations



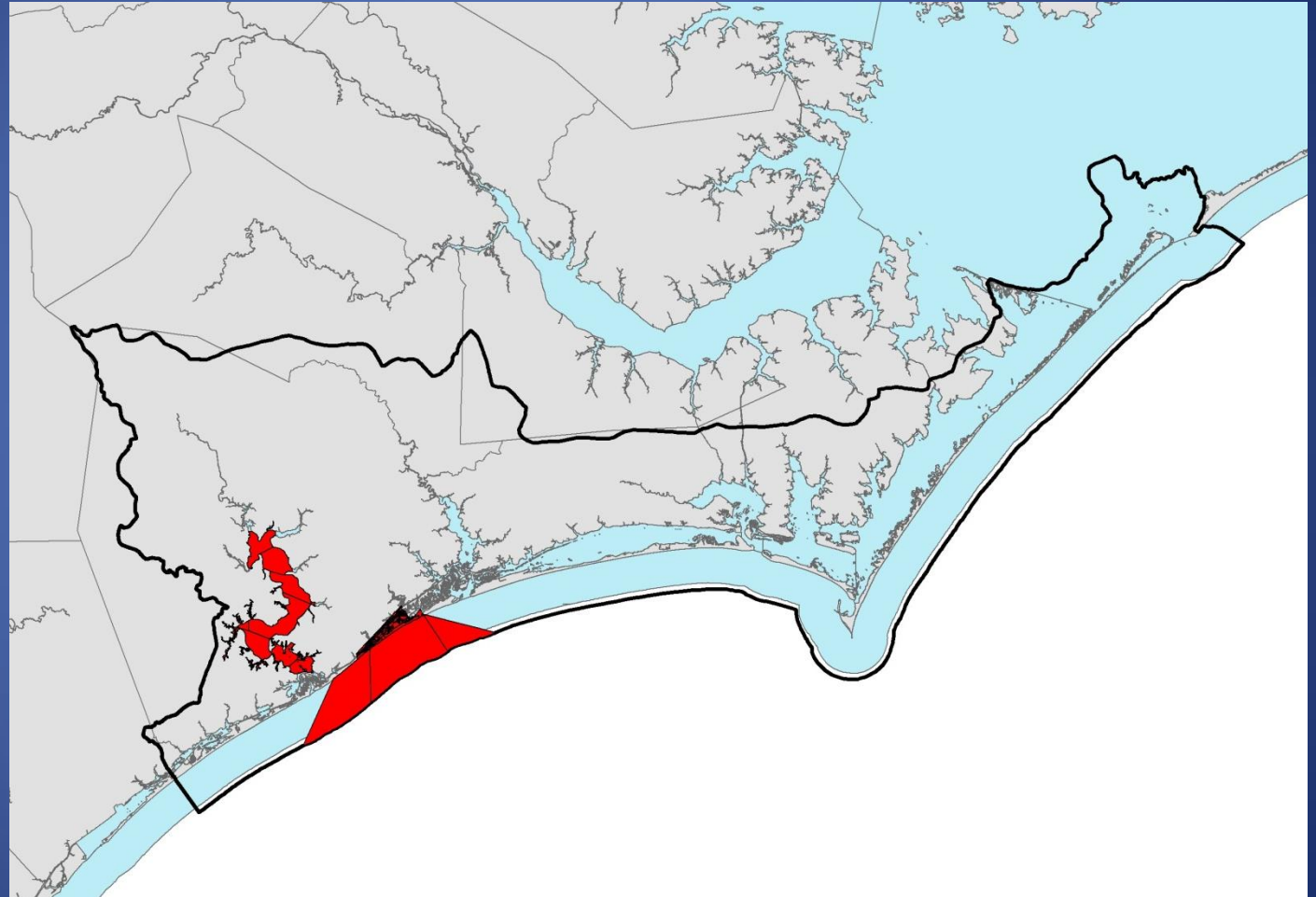
Water Quality Alterations

Mining
Discharge



Water Quality Alterations

Military
Restricted
Areas



Water Quality Alterations

Developed
Land Use



Water Quality Alterations

Agricultural
Land Use



Data SIO, NOAA, U.S. Navy, NGA, GEBCO

Google earth

Water Quality Alterations

Prohibited
Shellfish
Harvest
Areas



Physical Alterations

Trawling & Dredging

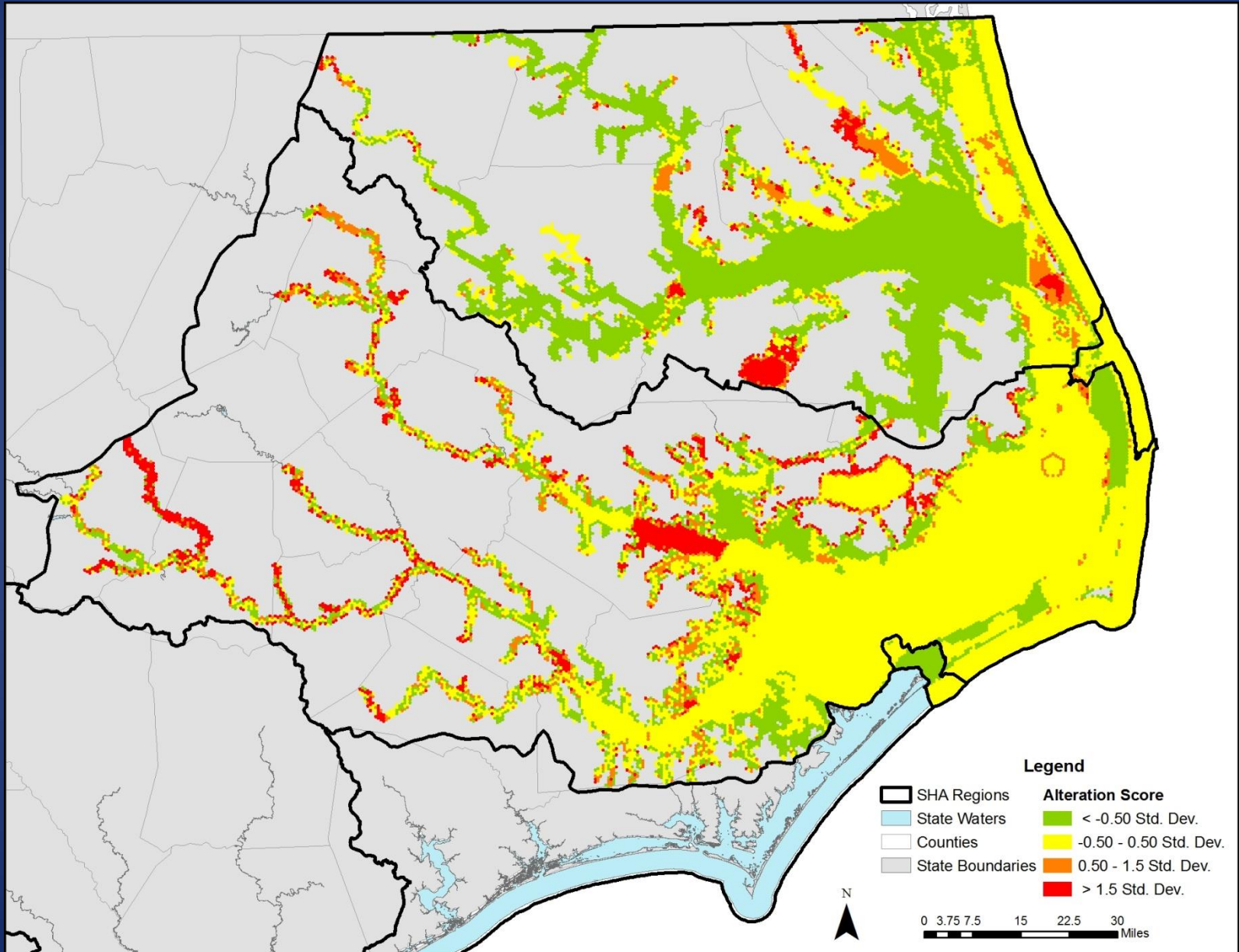


Physical Alterations

Mechanical Clam
Harvest Areas

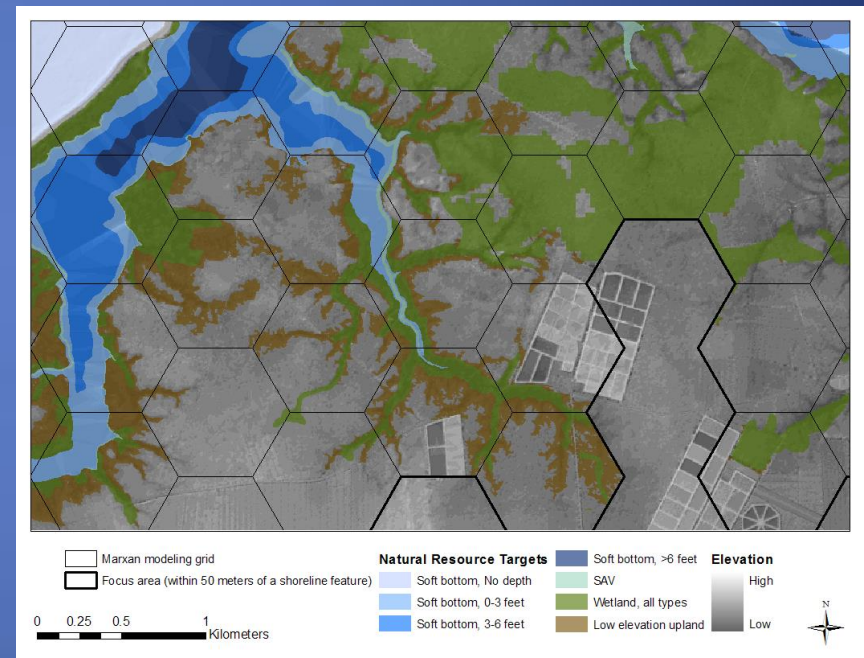


Alteration Scores



Computer Software - MARXAN

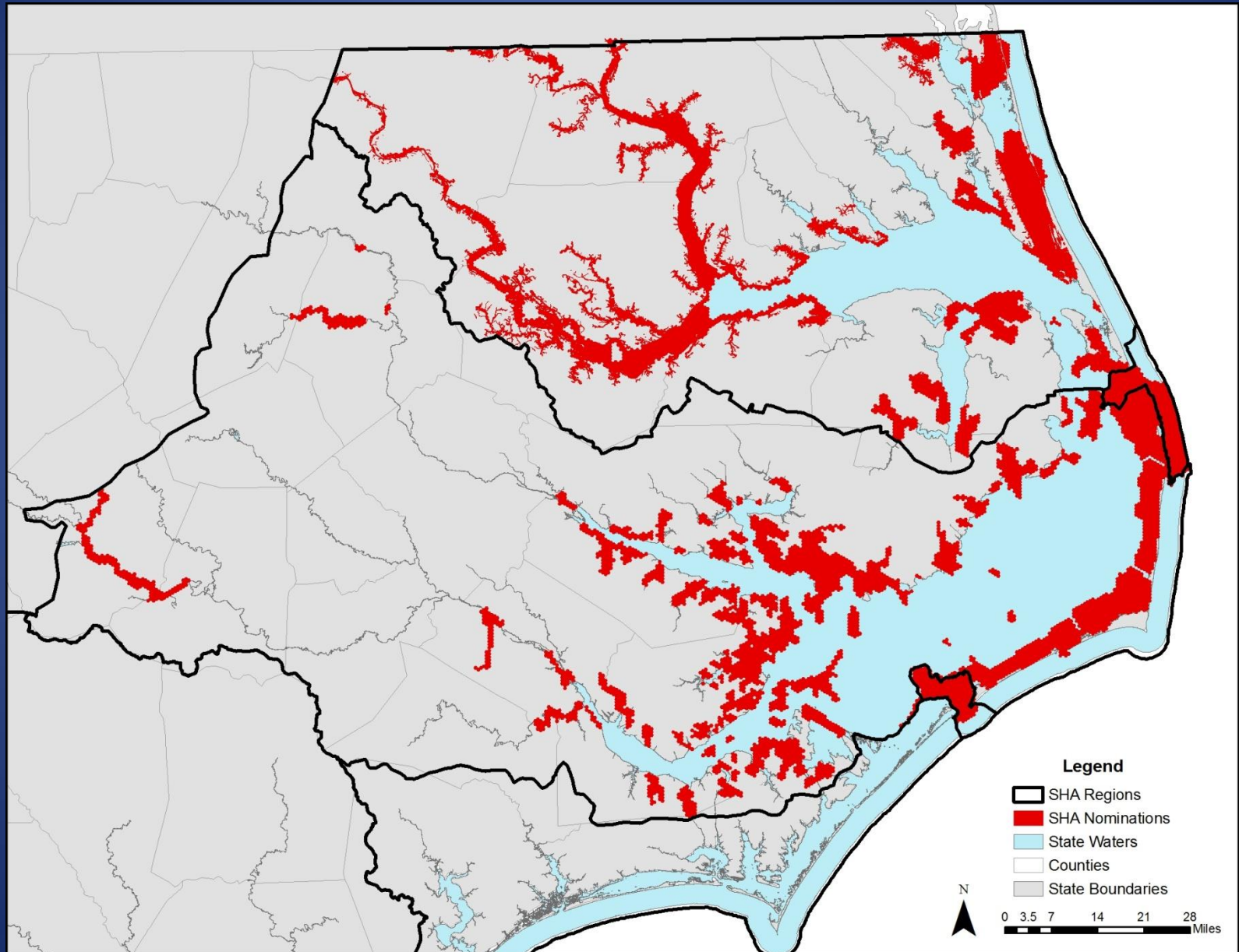
- **TARGETS** = Habitats
- **ALTERATIONS** = Known threats/degradation
- Data put into computer maps (GIS)
- Hexagon grid overlay
- MARXAN (site selection software) run to get draft results



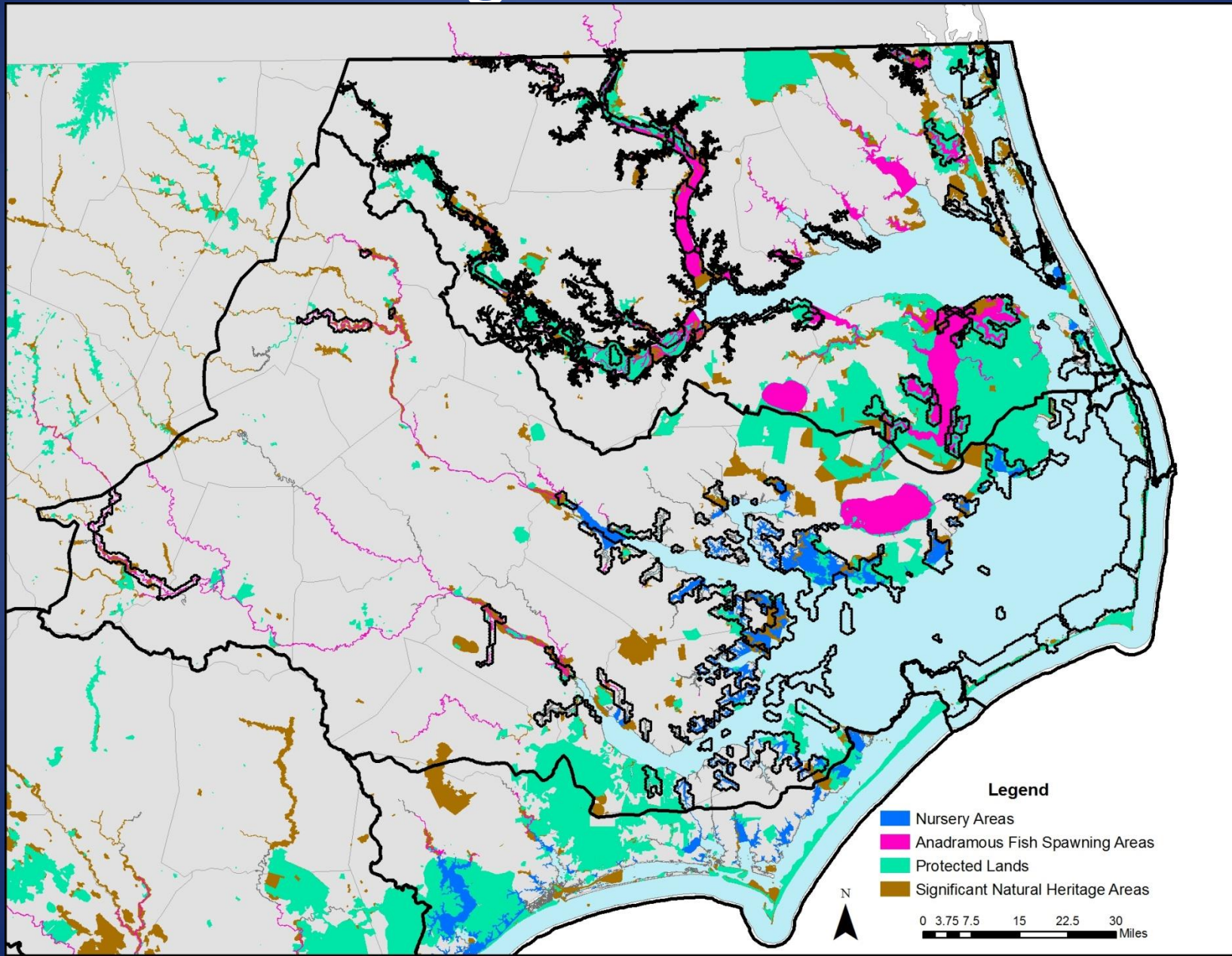
Criteria for Expert Modification

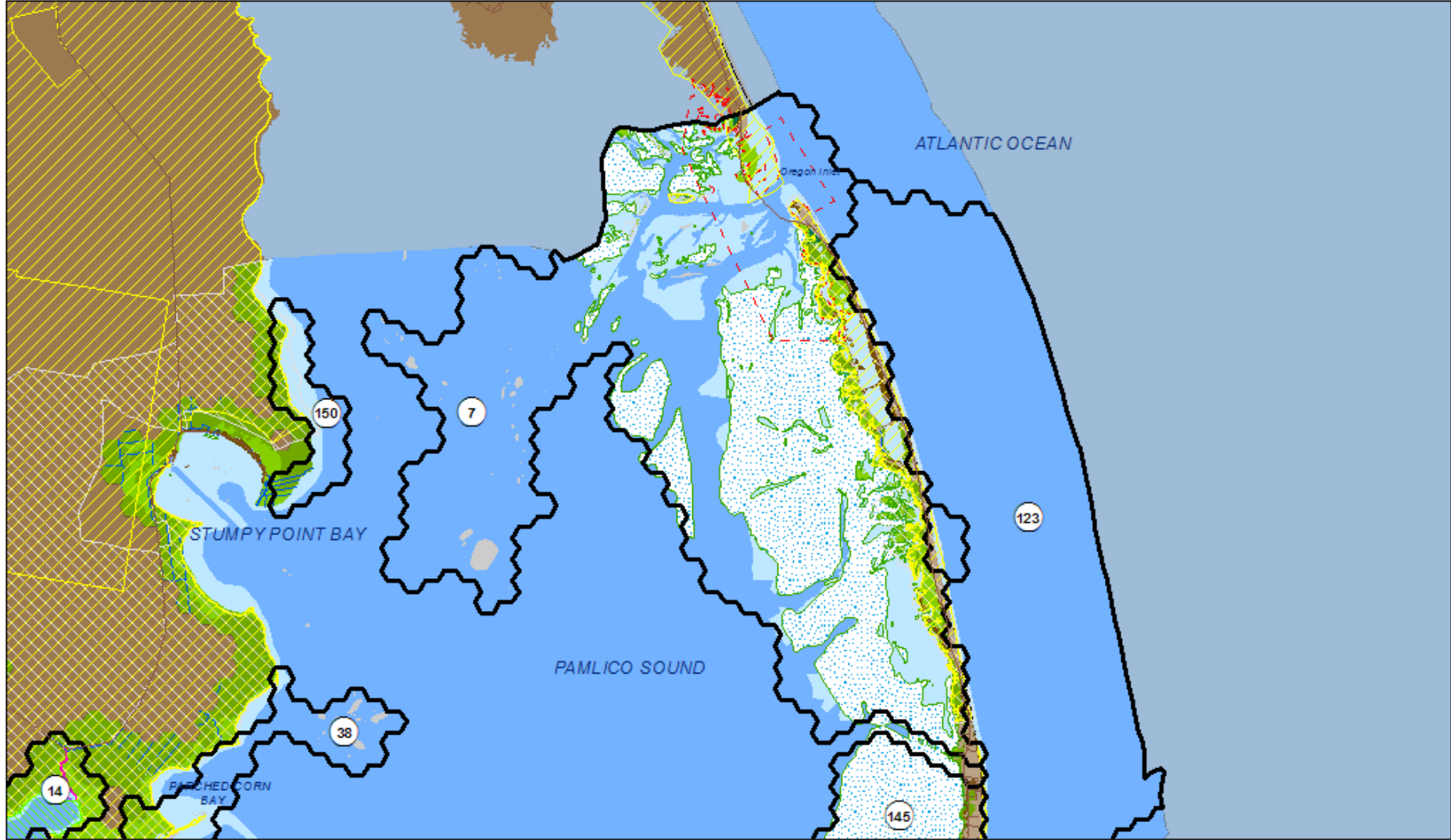
- Habitats present – rare, vulnerable, diverse
- Occurrence of ecological designations
- Alteration factors and ratings
- Selection frequency
- Fish data/information available
- Water quality impairment status
- Size/isolation/connectivity/shape
- Regional importance of a functional area

SHA Nominations



Designated Areas

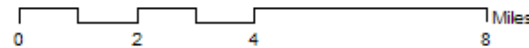


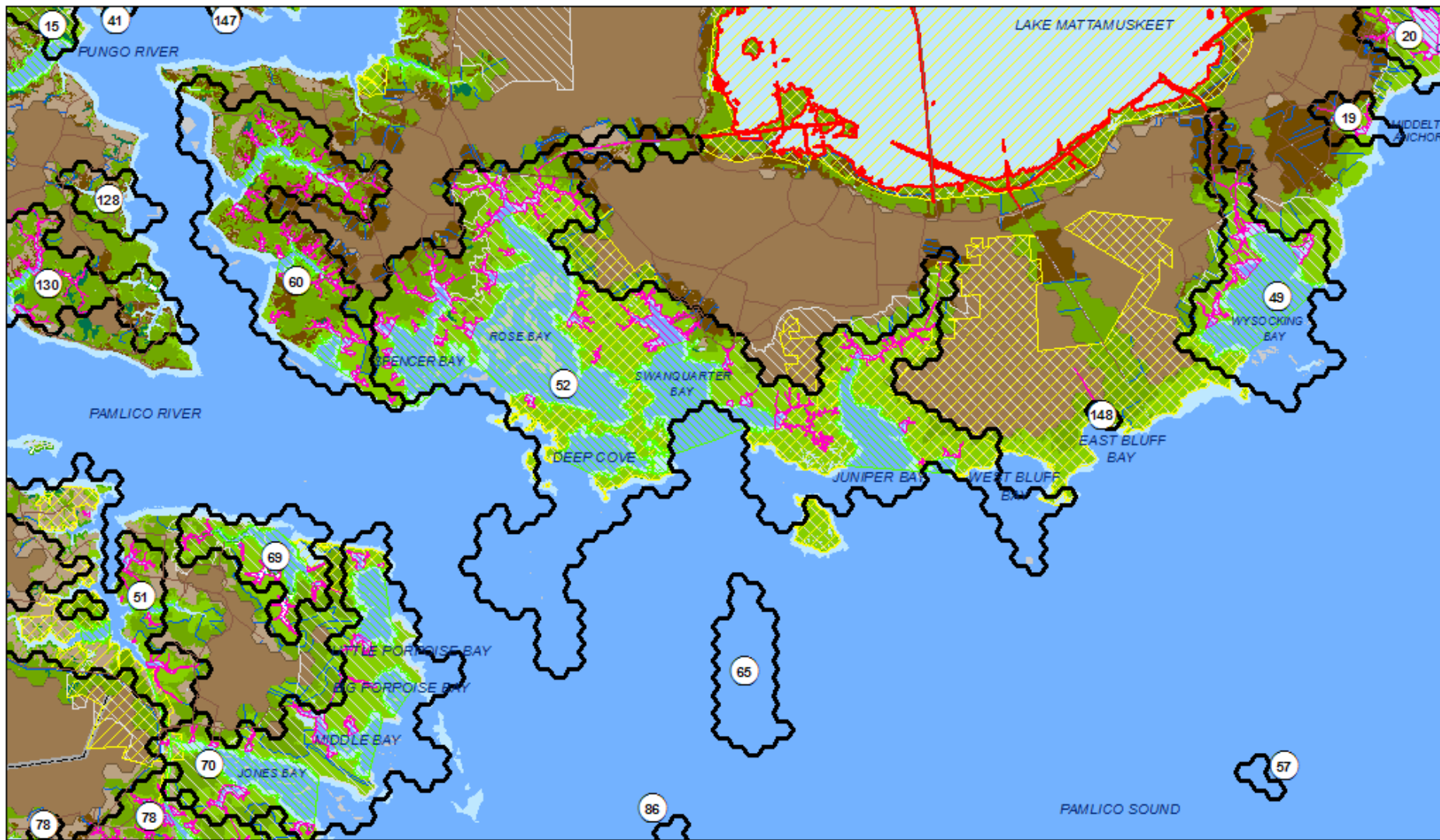


- Cities
- ~ Roads
- ~ Stream
- ▭ SHA nominations
- ▭ County Boundaries
- ▭ Focus area
- ~ AFSA shorelines
- ▭ Primary Nursery Area
- ▭ Secondary Nursery Area
- ▭ Conservation lands
- ▭ Significant natural heritage areas
- ▭ Crab Spawning Sanctuaries

Habitat type

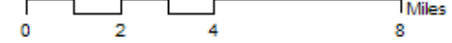
- Emergent wetland
- Forested wetland
- Wetland
- Shallow soft bottom
- Deep soft bottom
- SAV
- Shell bottom
- Riverine hard bottom
- Riverine soft bottom
- Low elevation upland





- Cities
- ~ Roads
- ~ Stream
- ▭ SHA nominations
- ▭ County Boundaries
- ▭ Focus area
- ~ AFSA shorelines
- ▭ Primary Nursery Area
- ▭ Secondary Nursery Area
- ▭ Conservation lands
- ▭ Significant natural heritage areas
- ▭ Crab Spawning Sanctuaries

- Habitat type**
- ▭ Emergent wetland
 - ▭ Forested wetland
 - ▭ Wetland
 - ▭ Shallow soft bottom
 - ▭ Deep soft bottom
 - ▭ SAV
 - ▭ Shell bottom
 - ▭ Riverine hard bottom
 - ▭ Riverine soft bottom
 - ▭ Low elevation upland



Potential Non-regulatory Actions

- Site specific based on area function, and type/severity of alteration
- Incorporate SHAs into land acquisition for conservation planning by environmental groups and federal, state, and local agencies
- Pursue restoration projects that would benefit SHAs
- Pursue funding for agriculture cost share programs to implement Best Management Practices near SHAs
- Use SHAs in local land use planning and permit reviews
- Prioritize funding for enhancement and restoration of fish passage, hydrology, and habitats
- Initiate monitoring of APNEP indicators within SHAs to assess trends

Next Steps

- No regulatory management measures proposed
- Ground truth sites
- Complete SHA analysis in regions 3&4

Questions?

