

Achieving Strategic Landscape Conservation in Eastern NC and Southeastern VA

Working Together to Meet the Challenges of a
Changing World

Pete Campbell, U.S. Fish and Wildlife Service
State of the Sounds Symposium
November, 17, 2011

Topics

- Conservation challenges today
- Strategic Landscape (Habitat) Conservation
- ENC/SEVA SHC Implementation Team
- Planning Process

The Challenges We Face

- A Public that is increasingly disconnected from the land
- Budget / staffing constraints
- Changing science of conservation
- Disconnect between science and management
- Urbanization/Sprawl
- Climate change
- Demands for transparency and accountability

Effects of Challenges

- ✓ Budget Constraints

 - Reduced capability

- ✓ Urbanization

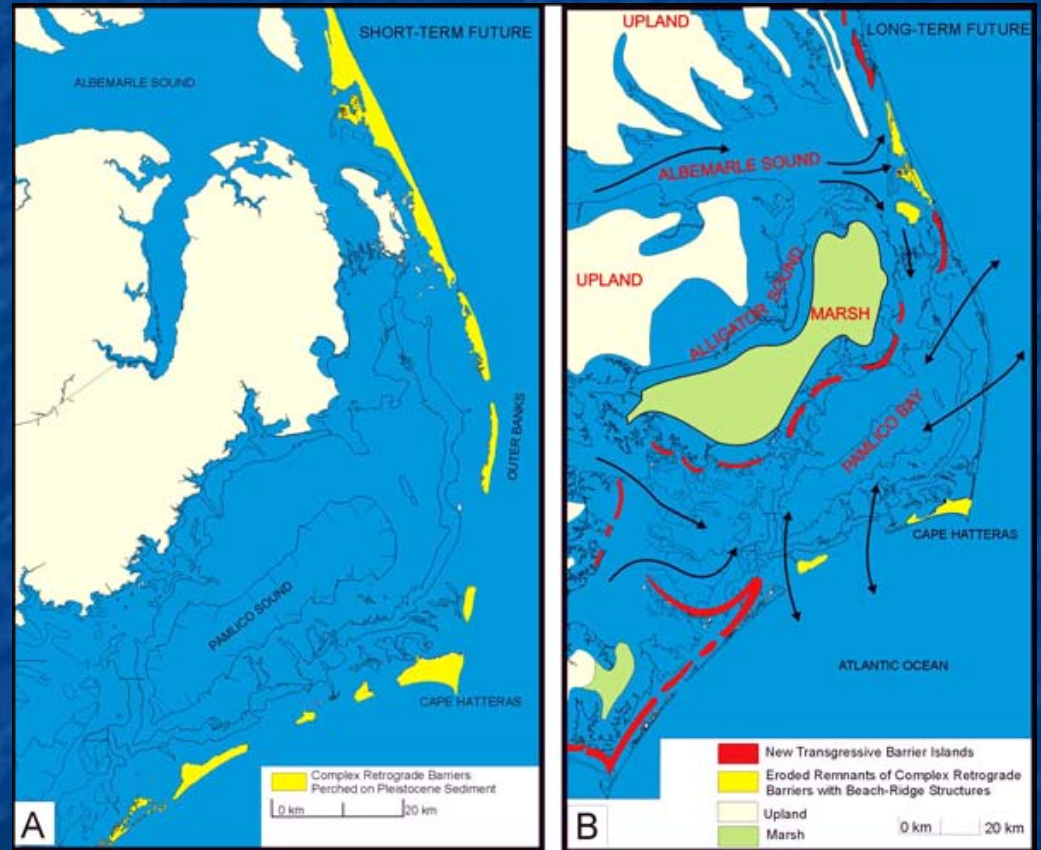
 - Effects on Habitat

- ✓ Accountability

- ✓ Climate Change

 - Threatens our resources

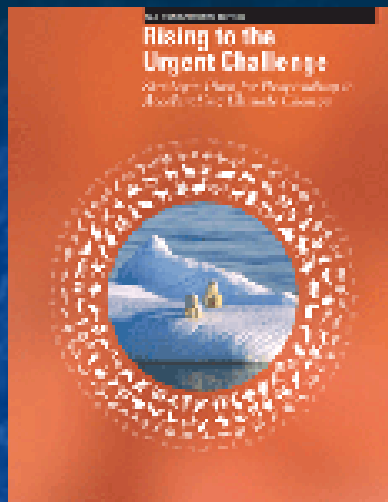
 - Complicates planning



To Respond to These Challenges We Need To:

- Focus on Top Priorities
- Have Clear Goals and Transparent Plans
- Integrate Science and Management
- Use the Best Available Science and Tools
- Build Capacity Where Needed
- Collaborate More Effectively
- Show Results are Directly Linked to Mission

National

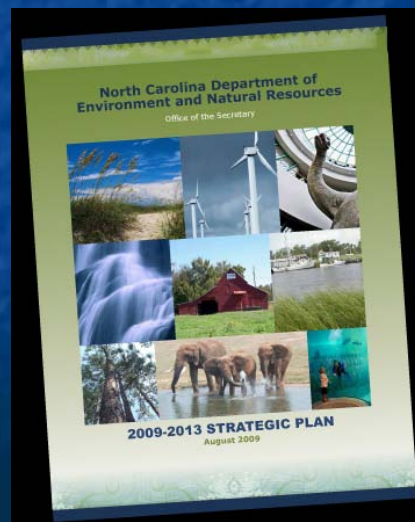
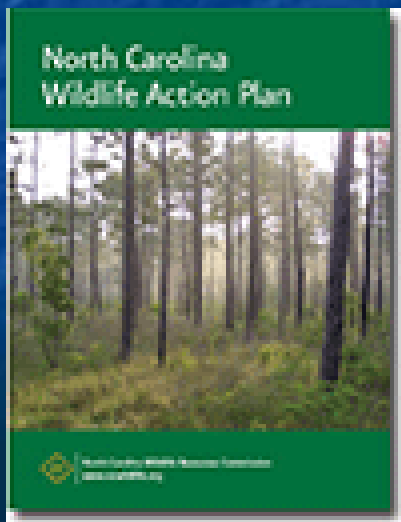


Regional

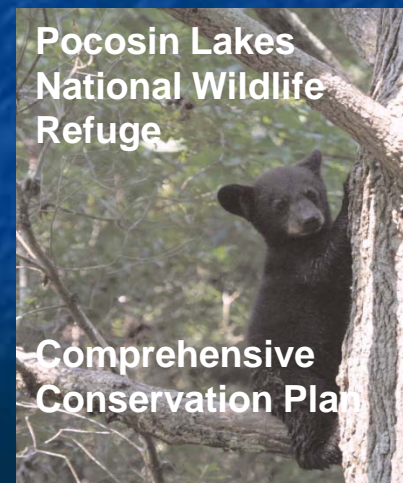


CCMP

State



Land Specific



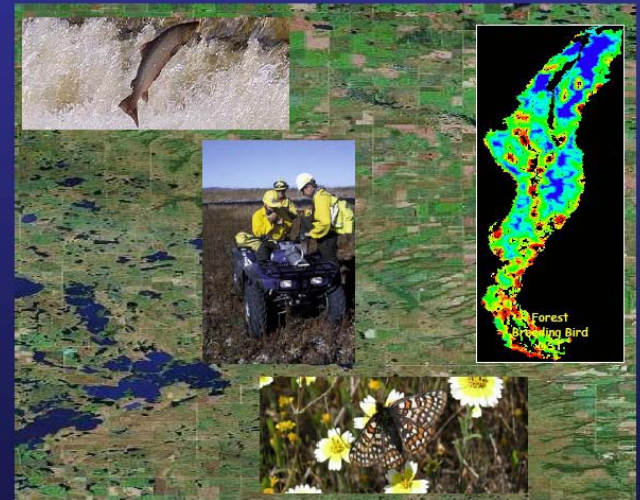
Adaptive Management Framework

Integrates Science and
Management

Dependent on Collaboration

Strategic Habitat Conservation

*Final Report of the
National Ecological
Assessment Team*



July 2006

Why Strategic Habitat Conservation...

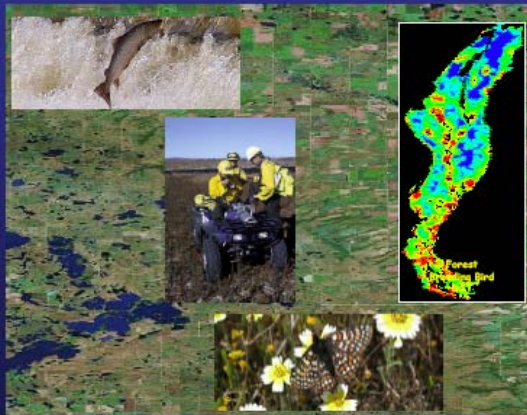
SHC is a response to changes affecting not simply government agencies but the conservation community at large:

- A growing focus on the sustainability of systems, communities, and species as the overarching aim of conservation.
- An information technology revolution that supports and drives an increasing ability to think and act at broad spatial scales.
- An increasing emphasis on accountability, biological as well as administrative.

SHC – Functional Elements

Strategic Habitat Conservation

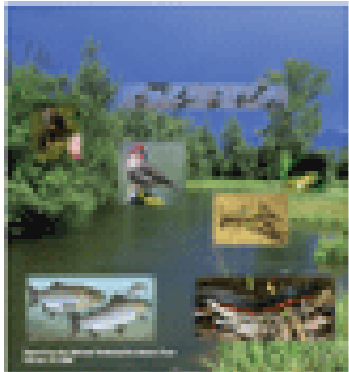
*Final Report of the
National Ecological
Assessment Team*



July 2006

Strategic Habitat Conservation Handbook

*A Guide to Implementing the Technical Elements
of Strategic Habitat Conservation (Volume 1)*



- ✓ Biological Planning
- ✓ Conservation Design
- ✓ Conservation Delivery
- ✓ Decision-Based Monitoring
- ✓ Assumption-Driven Research

Strategic Habitat Conservation Diagram

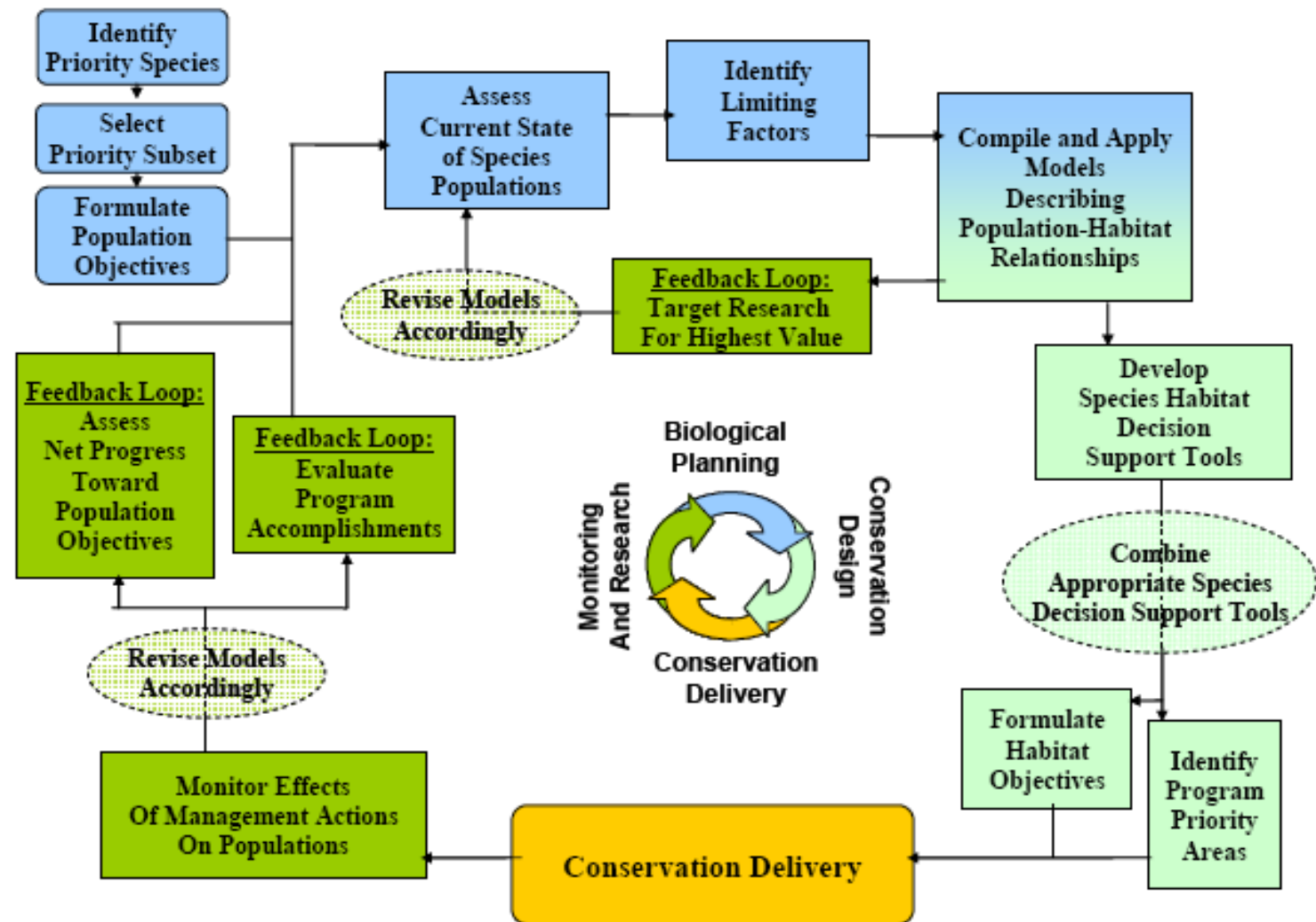
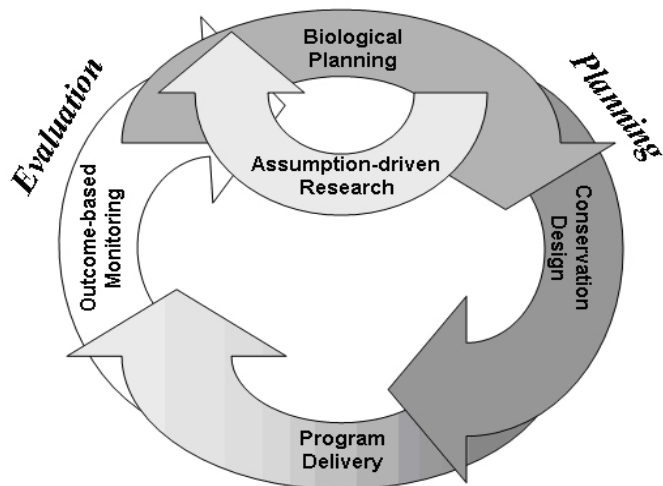


Figure 2. Schematic of the SHC framework at a landscape scale. Although depicted as a sequential process, some activities may occur simultaneously.



Implementation
SHC – FWS/USGS



APNEP EBM



Conservation By Design – TNC



Eco-Logical – USFHWA - USDOT

Agency or Organization	Approach	Goal
U.S. Fish and Wildlife Service (USFWS)	Strategic Habitat Conservation (SHC)	To ensure population viability of Federal Trust species and the ecosystem functions upon which they rely through strategic conservation of habitat at the landscape scale.
Virginia Department of Game and Inland Fisheries (DGIF)	Wildlife Action Plan (Action Plan)	To unite natural resource agencies, sportsmen, conservationists, and citizens in a common vision for the conservation of the Commonwealth's wildlife and the habitats in which they live.
N.C. Wildlife Resource Commission (NCWRC)	Wildlife Action Plan (Action Plan)	To serve as the Commission's blueprint for fish and wildlife conservation statewide for the next half century, providing guidance and assistance to other conservation-minded agencies, organizations, industries, academics, and individuals.
The Nature Conservancy (TNC)	Conservation by Design (CbD)	To preserve 10% of every major habitat type in the world.
APNEP	Ecosystem Based Management (EBM)	A region where human communities are sustained by a functioning ecosystem; where aquatic, wetland, and upland habitats support viable populations of native species; and, where water quantity and quality maintain ecological integrity



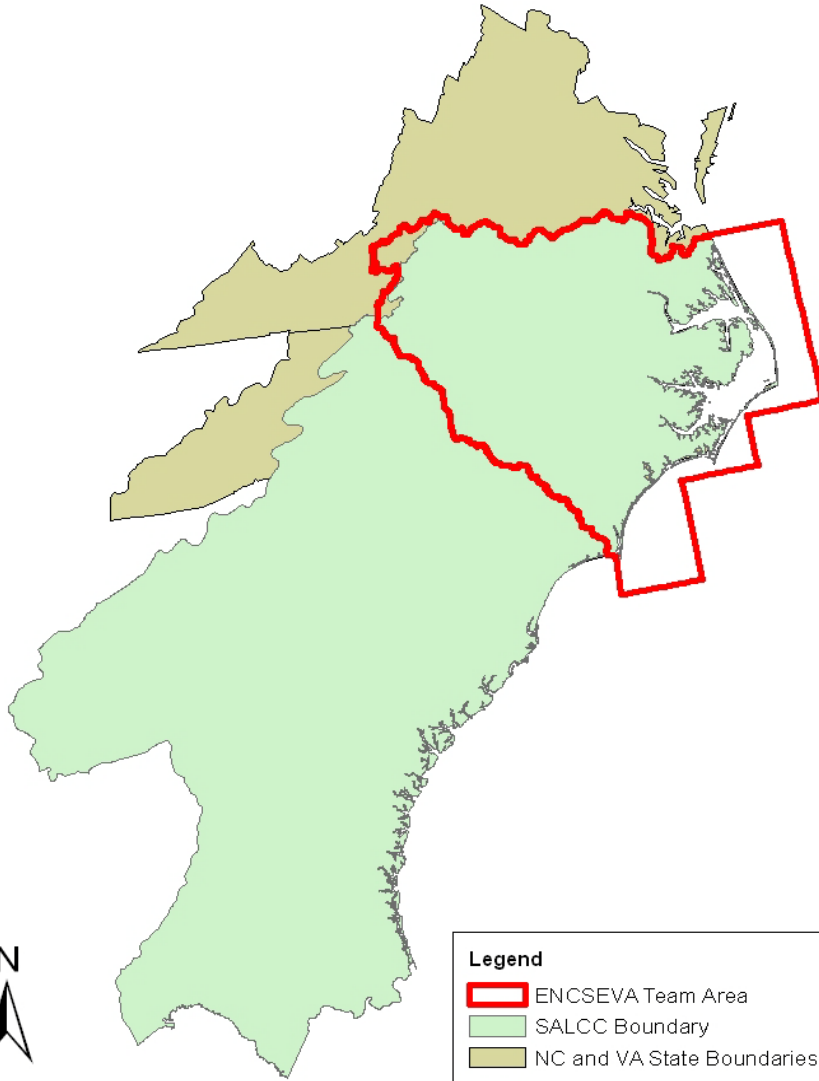
DOI Focus

- Define geographically and biologically relevant focal areas that support landscape level conservation.
- Demonstrate cross-program and collaborative support
- Rely heavily on state wildlife action plans and partnerships.
- Have measured biological outcomes
- Results must be tied to real progress on the ground.

Landscape Conservation Cooperatives

- Partnerships where members of the conservation community build shared capacities to plan, design and deliver conservation in ways that integrate among multiple spatial scales
- Coordinate and provide the science support for Biological Planning and Conservation Design to LCC members and Partners

ENC/SEVA Relationship to the SALCC



- Landscape Conserva**
- 1. Appalachian
 - 2. California
 - 3. Desert
 - 4. Eastern Tallgras
 - 5. Great Basin

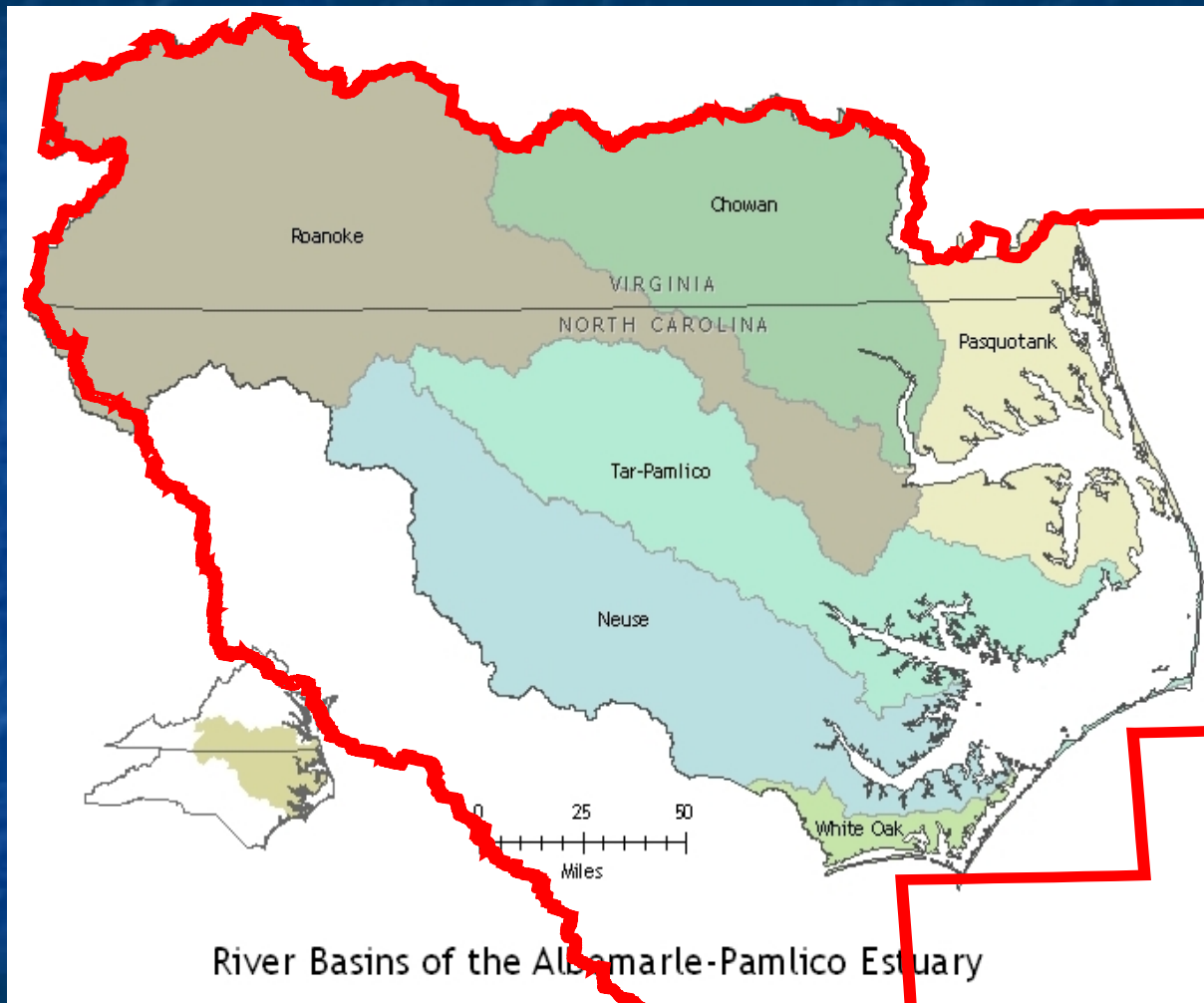
- Legend**
- ENCSEVA Team Area
 - SALCC Boundary
 - NC and VA State Boundaries

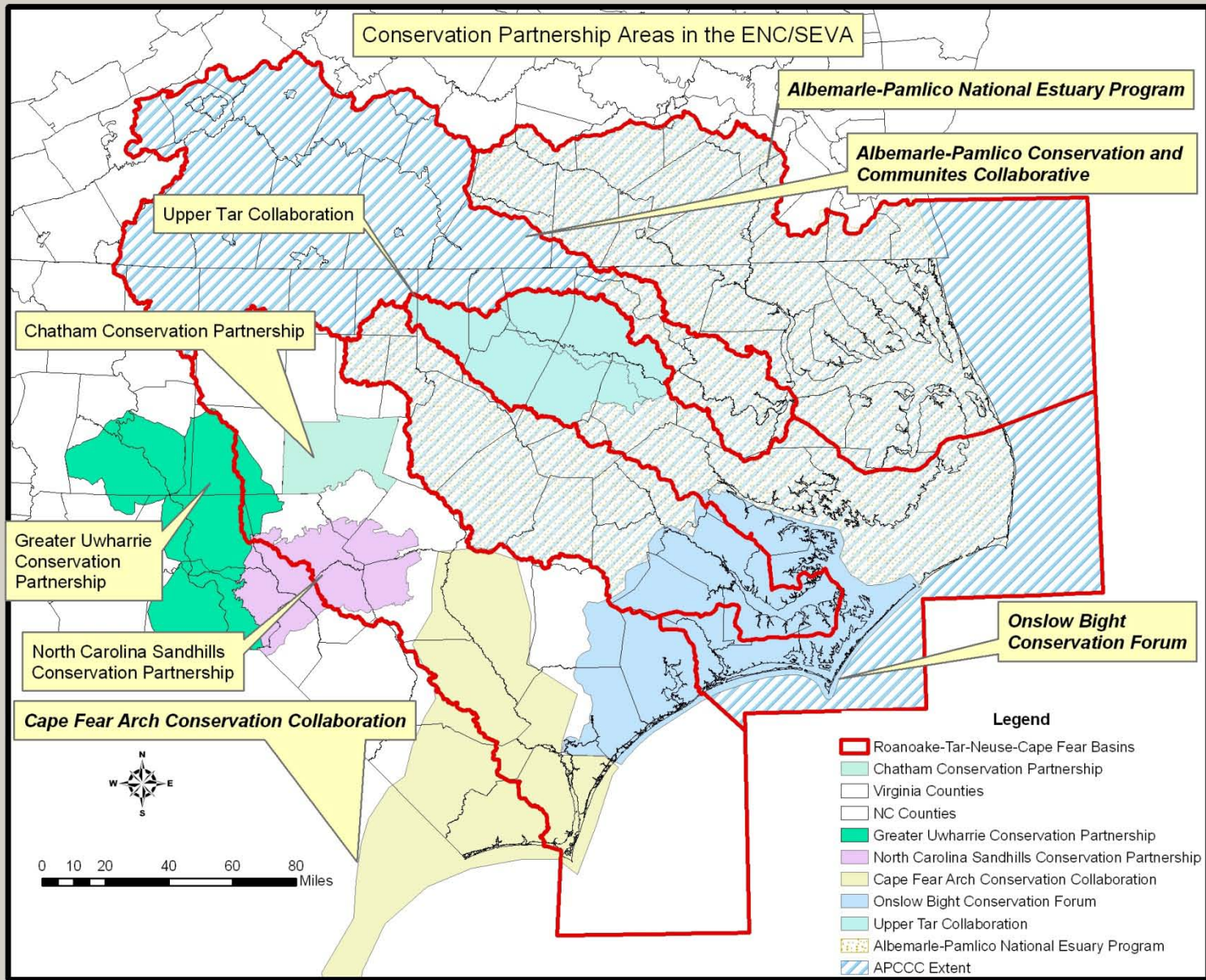


ENC/SEVA SHC Team Composition

- National Park Service
- U.S. Fish and Wildlife Service
 - VA and NC Ecological Services
 - VA and NC Refuges
 - Fisheries
 - Migratory Birds
- U.S. Geological Survey
 - NC and VA Water Science Centers
 - NC Cooperative Fish and Wildlife Research Unit
 - Leetown Science Center

ENC/SEV Relationship to APNEP





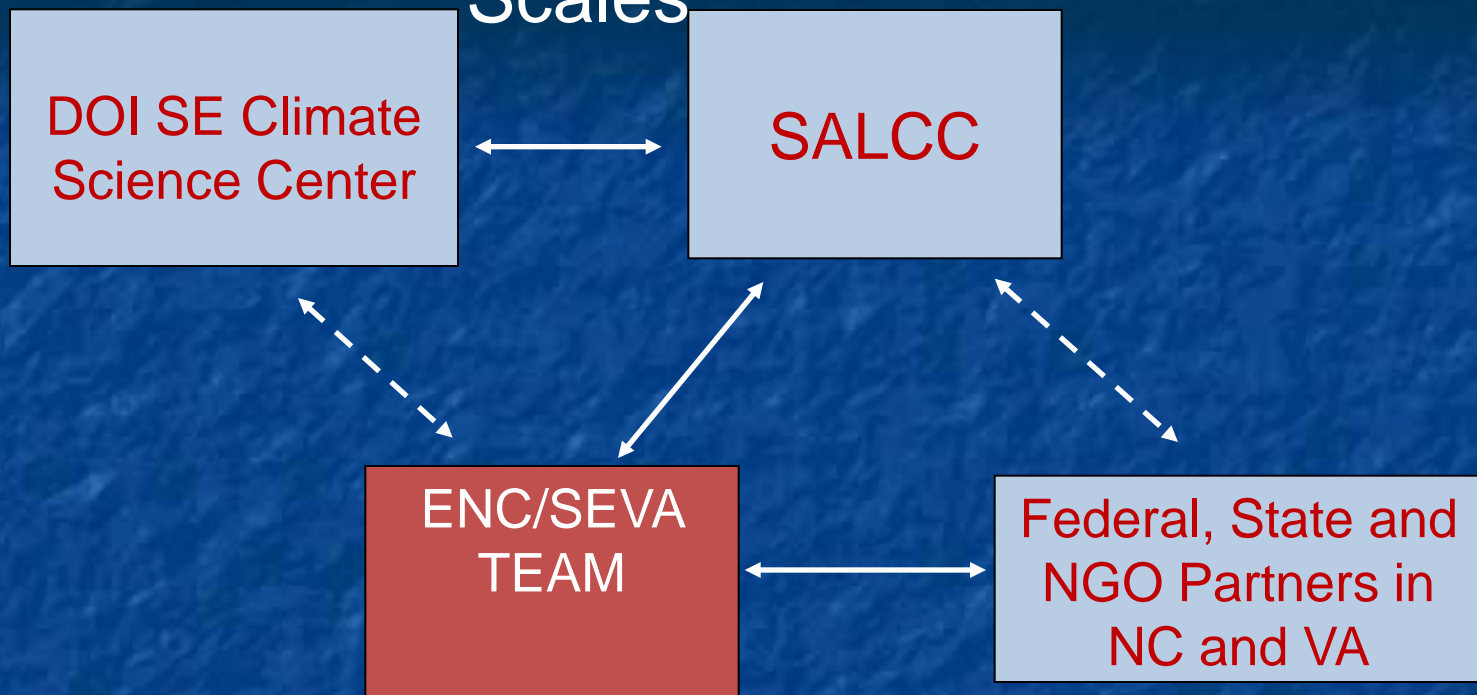


ENC/SEVA Team Vision

Working together and with our partners, promote strategic landscape-level conservation in the Eastern North Carolina/Southeastern Virginia (ENC/SEVA) ecoregion

1. Adaptively identify landscape conservation needs and priorities;
2. Establish annual, mutual conservation goals and objectives;
3. Identify challenges and opportunities for SHC implementation and develop remedies;
4. Establish and foster partnerships to accomplish landscape-level conservation goals and objectives;
5. Implement strategies to accomplish mutual goals and objectives within the ENC/SEVA ecoregion.

Integrating Across Programs and Spatial Scales



Open Standards...

1. CONCEPTUALIZE

- ∴ Define scope, vision, targets
- ∴ Identify threats and contributing factors

2. PLAN & MONITOR

- ∴ Develop action plan with goals and strategies
- ∴ Develop monitoring plan with indicators of success



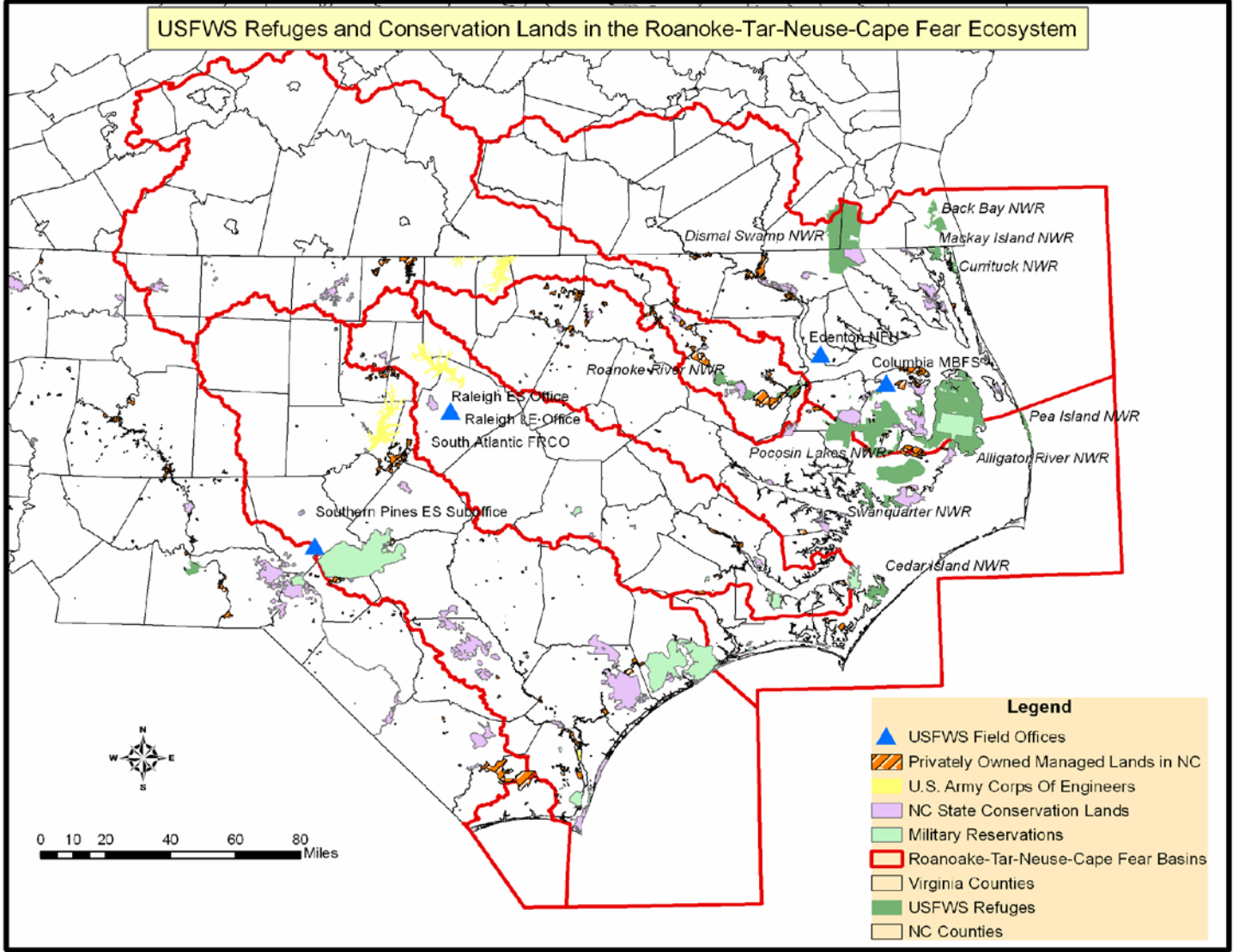
Planning Scope

Portions of the Coastal Plain and Piedmont physiographic regions and marine habitats, as appropriate, located within eastern North Carolina and southeastern Virginia

Planning Vision

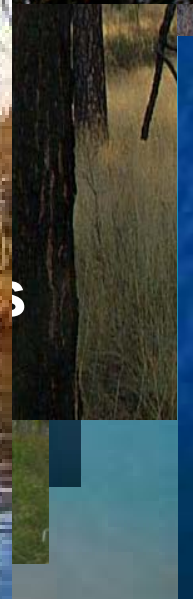
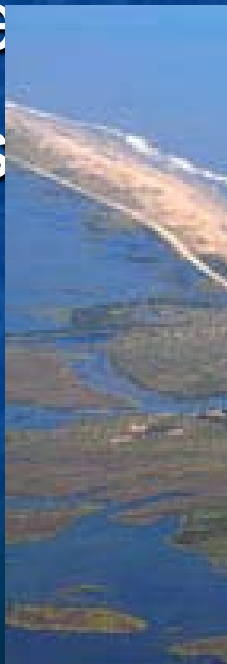
A network of public and private lands and waters that sustain resilient populations of priority fish, wildlife, and plants, and the habitats on which they depend, for the benefit and appreciation of current and future generations

USFWS Refuges and Conservation Lands in the Roanoke-Tar-Neuse-Cape Fear Ecosystem



Ecological Systems

- Marine
- Barrier Islands
- Estuarine
- Wetlands
- Uplands
- Riverine



Isolated Wetlands



Community/Habitats

Wet Pine Savanna
Isolated Ephemeral
Wetlands
Swamp Forest
Pocosin
Freshwater Marsh
Natural Lakes

Project Scope : Portions of the Coastal Plain and Piedmont physiographic regions and marine habitats, as appropriate, located within eastern North Carolina and southeastern Virginia

Wet Pine Savanna
▲

Isolated Ephemeral Wetlands
▲

Swamp Forest
Goal
▲

Pocosin
Goal P1
▲

Freshwater Marsh
Goal
▲

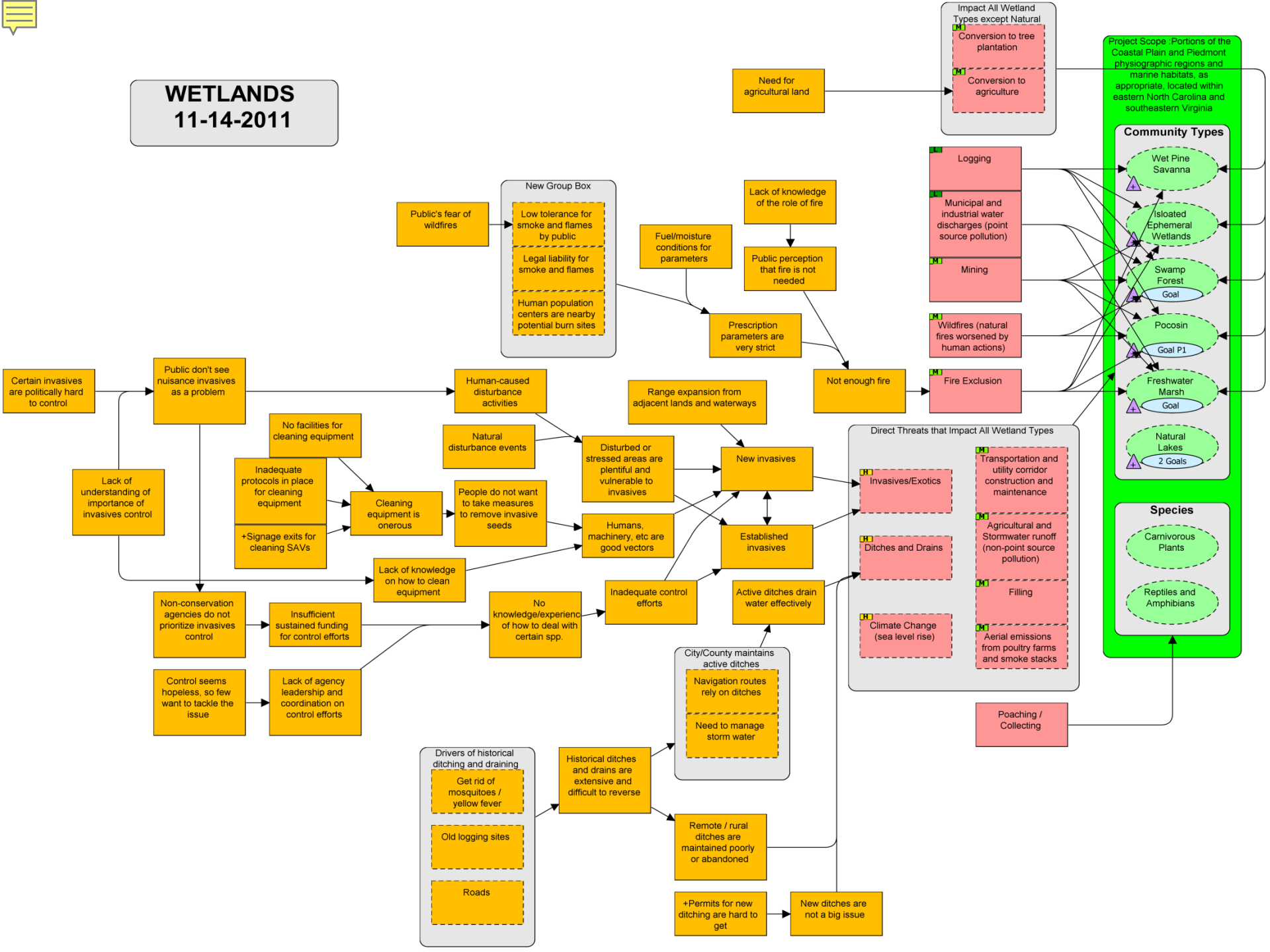
Natural Lakes
2 Goals
▲

Carnivorous Plants

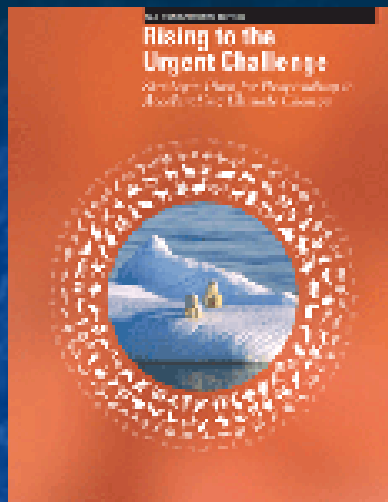
Reptiles and Amphibians

WETLANDS

11-14-2011



National

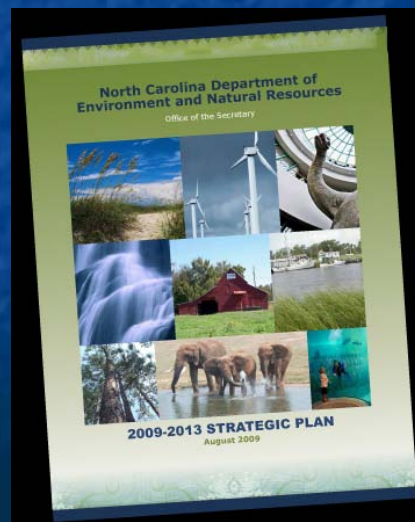
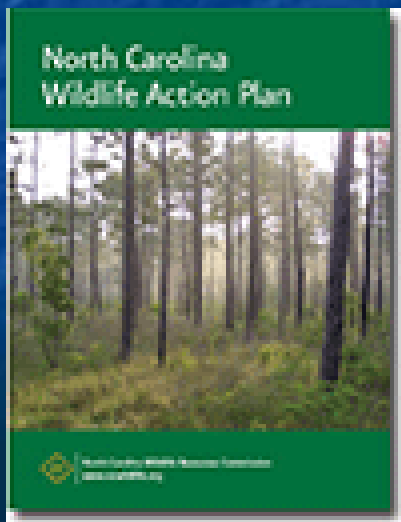


Regional

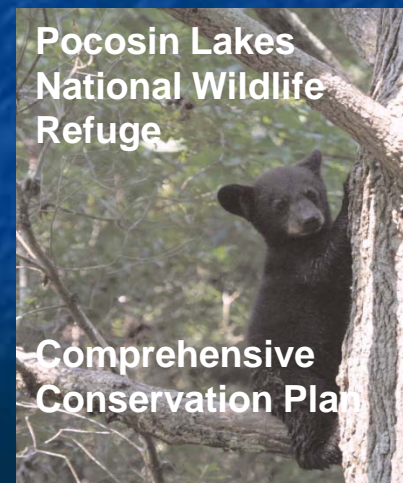


CCMP

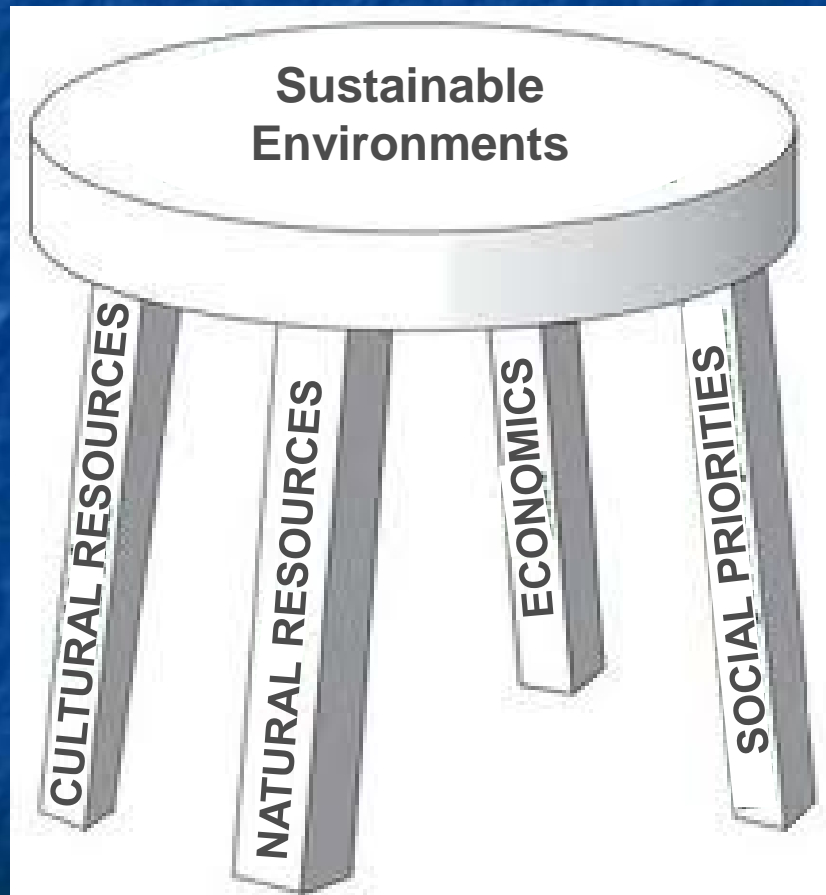
State



Land Specific



Success = Balance



A photograph of a forest with tall pine trees and a field of green grass with purple flowers in the foreground. The text is overlaid on the image.

“A thing is right when it tends to preserve the integrity, stability and beauty of the biotic community. It is wrong when it tends otherwise.”

Aldo Leopold

Discussion/Questions