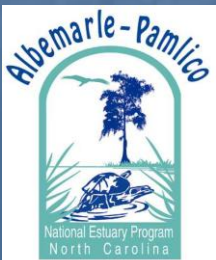


Pactolus Stormwater Wetland Project



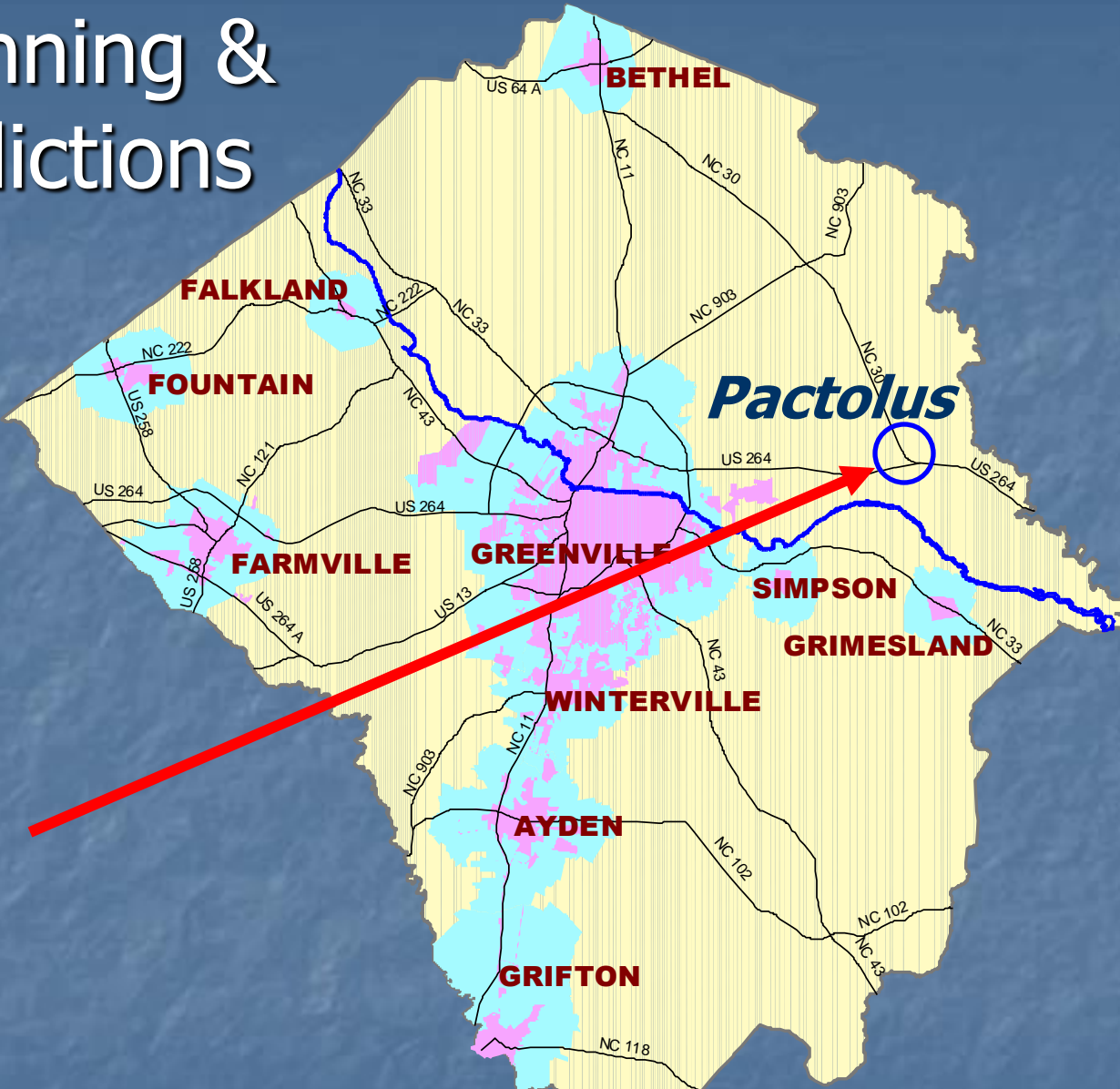
James F. Rhodes, AICP
Pitt County Planning Department
November 17, 2004



Pactolus Stormwater Wetland Project




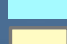

- Background Information
- Proposed Project
- Project Schedule

Pitt County Planning & Zoning Jurisdictions



Pactolus

Pactolus

-  Tar River
-  Major Roads
-  City Limit
-  ETJ
-  Pitt County Planning Jurisdiction

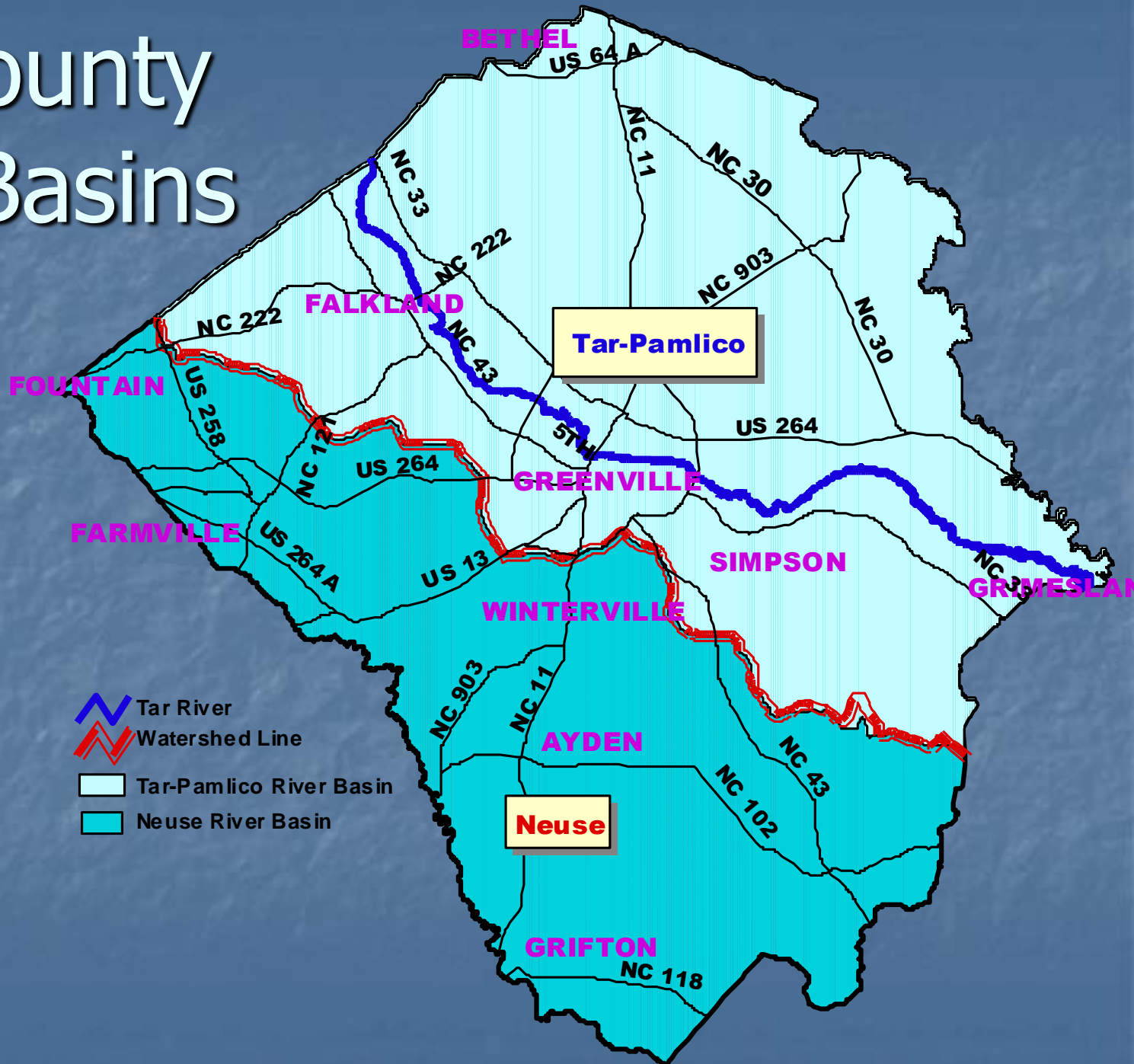





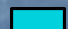
Pactolus Stormwater Wetland Project

Background

- Stormwater Regulations
 - NPDES, Phase II - Public entities that own/operate a municipal separate storm sewer system(ms4) within designated areas are subject.
 - Tar-Pamlico - Pitt County one of 11 named communities required to develop a Stormwater Management Program for Nutrient Control.

Pitt County River Basins



-  Tar River
-  Watershed Line
-  Tar-Pamlico River Basin
-  Neuse River Basin

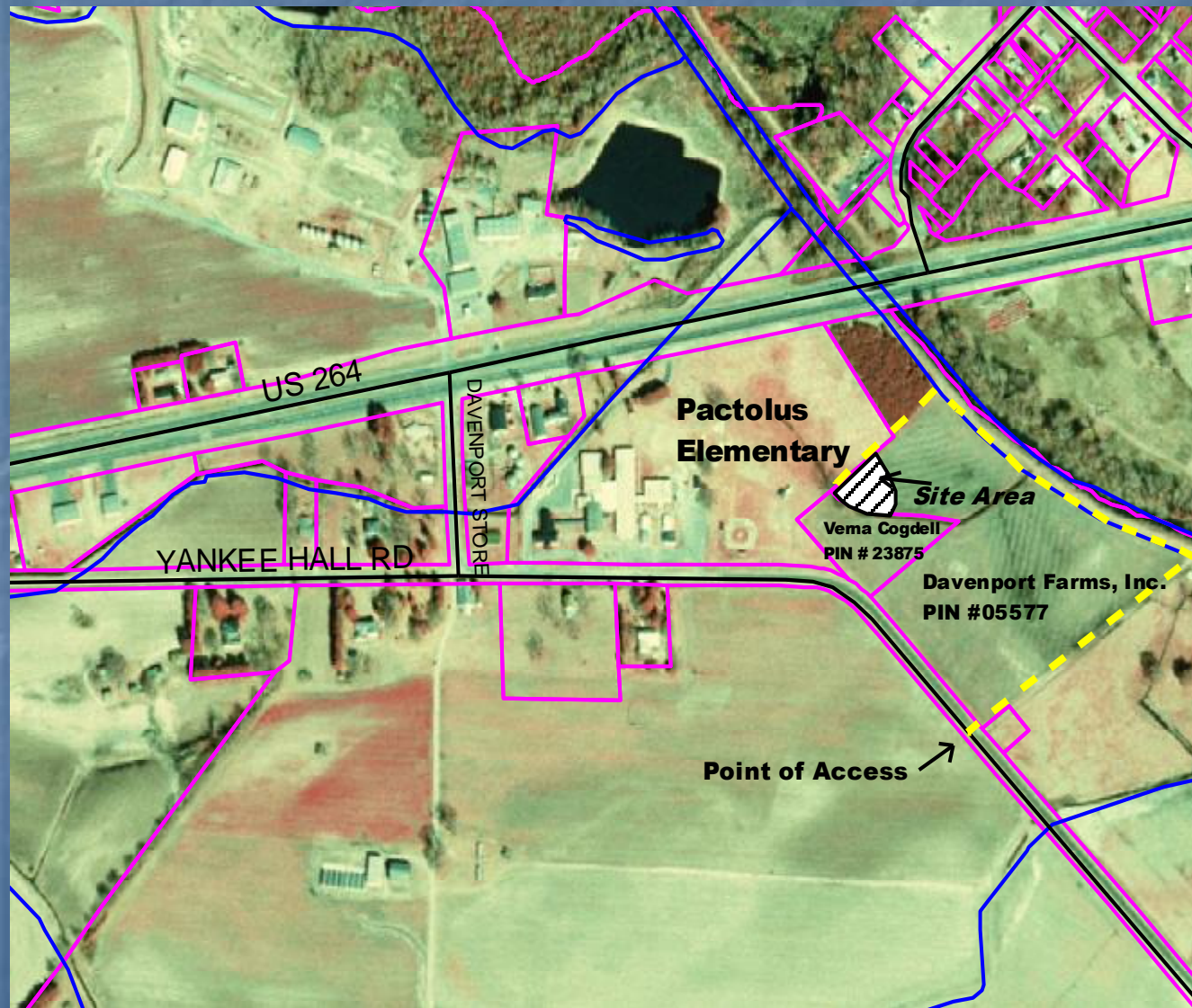
Pactolus Stormwater Wetland Project

Pactolus Elementary School

- Approximately 14 acre site
- 18,000 Sq. ft. Facility
- Adjacent to Grindle Creek



Pactolus Stormwater Wetland Project



- Roads
- Hydrology
- Tax Parcels



May 14, 2004

Map Scale :
1 Inch Represents 2,000 Feet

Map Produced By:
Pitt County Planning Department

Pactolus Stormwater Wetland Project



Video of Area

Pactolus Stormwater Wetland Project



During rainfall events, stormwater is piped from the rooftop to an outlet which carries the stormwater offsite.

Pactolus Stormwater Wetland Project



The runoff exits the outlet.

Pactolus Stormwater Wetland Project



Travels down a concrete swale.

Pactolus Stormwater Wetland Project



And exits the site.

Pactolus Stormwater Wetland Project



Once the runoff exits the site, it is carried to Grindle Creek by an open drainage ditch.

Pactolus Stormwater Wetland Project

- Mid 2003 - APNEP Grant application submitted.
- May 17, 2004 - \$31,200 grant awarded, \$2,000 of which is designated for land acquisition.
- September 7, 2004 - Contract fully executed.

Pactolus Stormwater Wetland Project

Project Activities

- Acquire a 0.25 acre parcel to construct a stormwater wetland that will filter runoff from the Pactolus Elementary School Site before it enters Grindle Creek.

Pactolus Stormwater Wetland Project

■ Primary Benefits

- Educate the design community on the impacts of stormwater runoff;
- Educate Pitt County students about the functions of wetlands (e.g. outdoor classroom);
- Help the County meet the educational requirements of the Tar-Pamlico Stormwater rule;

Pactolus Stormwater Wetland Project

- The stormwater wetland will (continued):
 - Serve as a retrofit site under the Tar-Pamlico Stormwater Rule;
 - Aid in improving water quality in the Tar-Pamlico River Basin; and
 - Build partnerships among various agencies - County, Board of Education, Natural Resources Conservation Service, Cooperative Extension and North Carolina State University

Pactolus Stormwater Wetland Project

Pitt County Board of Education to provide access to and long-term maintenance of the wetland.



**Stormwater Wetland at
Smithfield-Selma High
School in Johnston County,
NC**

Pactolus Stormwater Wetland Project

■ Project Schedule

- December 2004 -Acquire property
- December 2004 through February 2005 -
Design Wetland
- March 2005 - Begin Construction

Pactolus Stormwater Wetland Project

Questions & Comments?

James F. Rhodes, AICP

Pitt County Planning Department

jfrhodes@co.pitt.nc.us

www.pittcountync.gov/depts/planning