

A decorative horizontal banner at the top of the page features three distinct nature scenes: a close-up of a yellow flower, a bird in flight, and a blue sky with white clouds.

One
North Carolina
Naturally

Regional Progress Reports



Upper Coastal Plain

Regional Open Space Strategy

Chris Lukasina, GIS Planner

Upper Coastal Plain Council of Governments

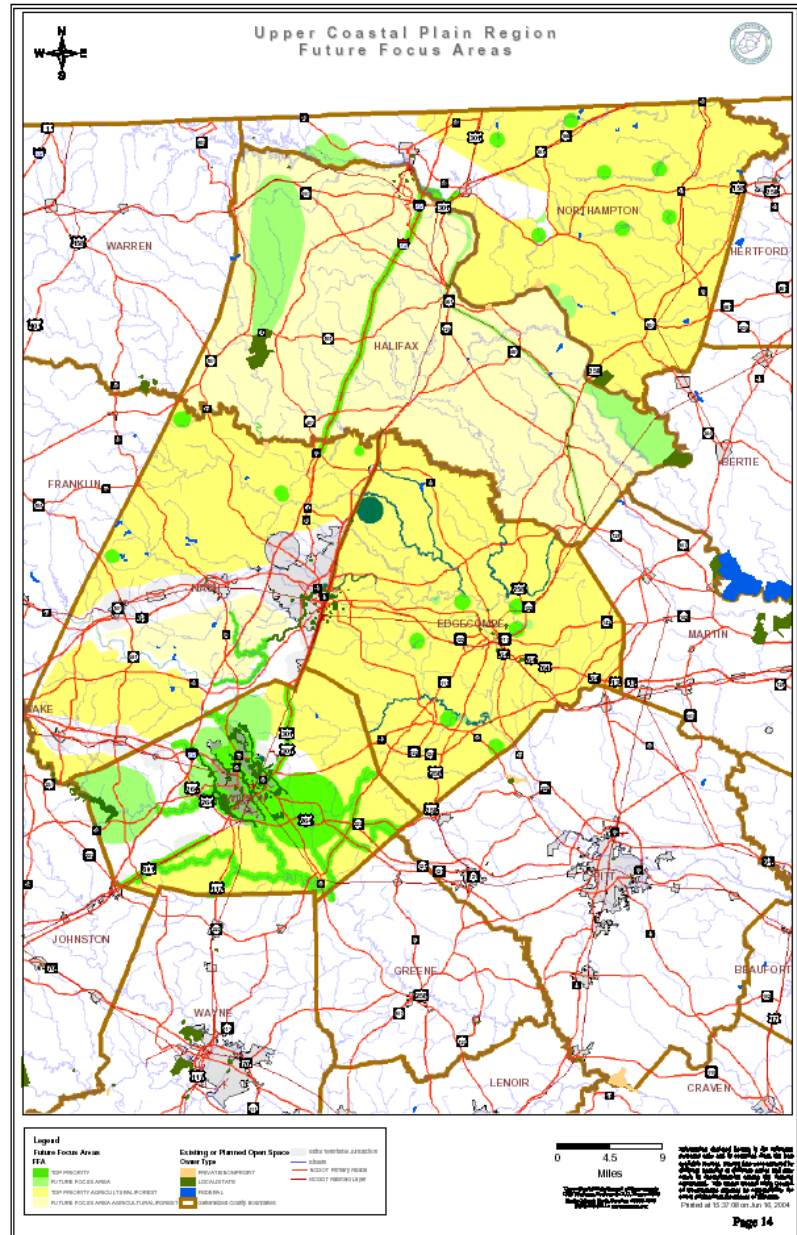


Regional Planning Efforts

- Open Space Inventory
- County and Regional Workshops
- Survey
- Future Focus Areas
- Open Space Strategy

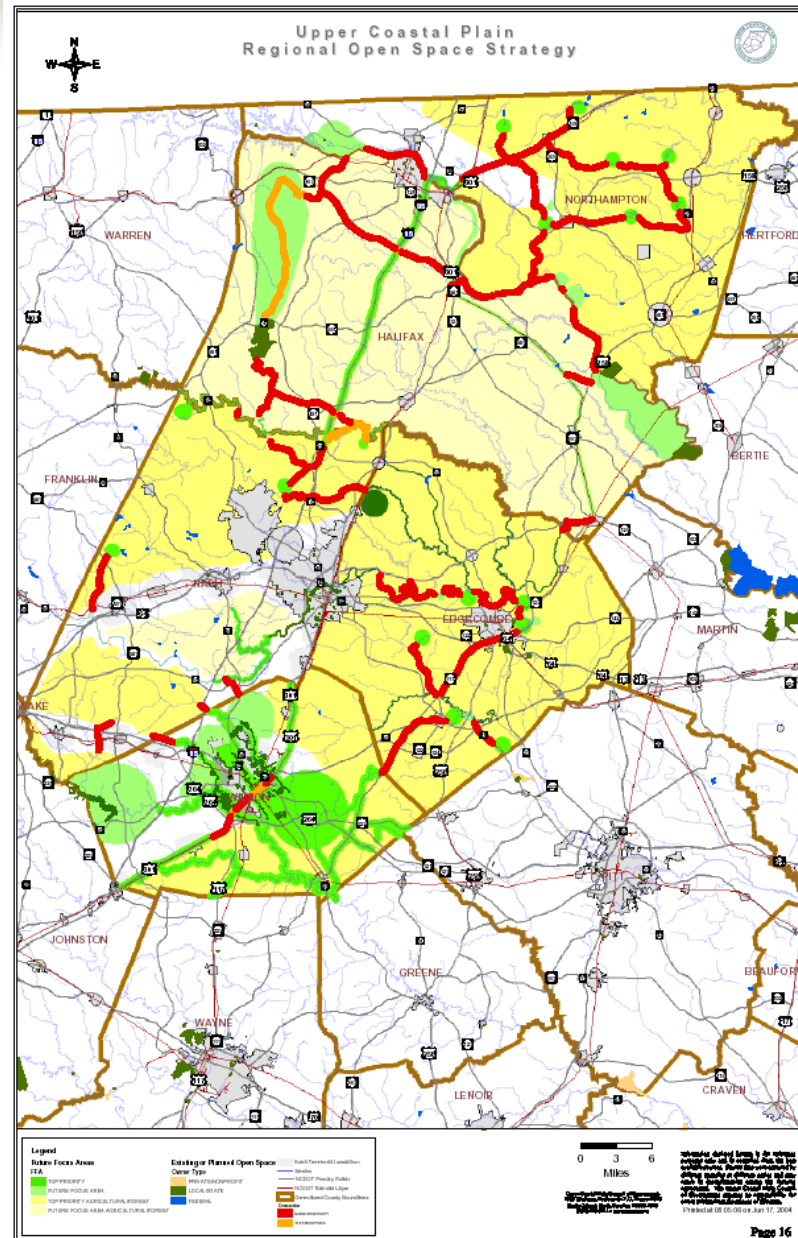
Future Focus Areas

- Open Space during the next 10-15 years



Open Space Strategy

- Open Space “wish list” over the next 10-15 years
- Potential Connections & Opportunities



Regional Progress Reports



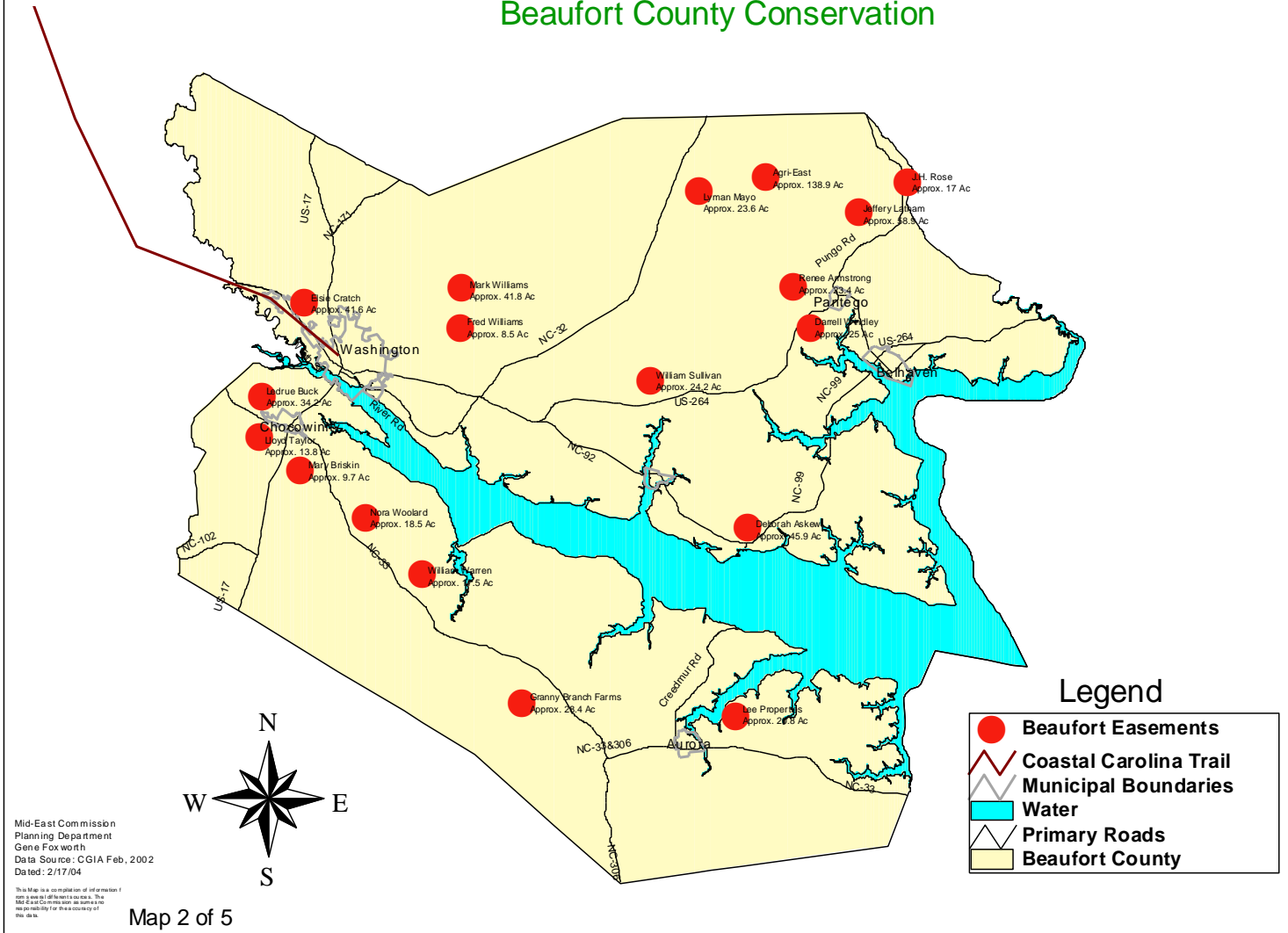
Mid-East Commission

Regional Open Space Strategy

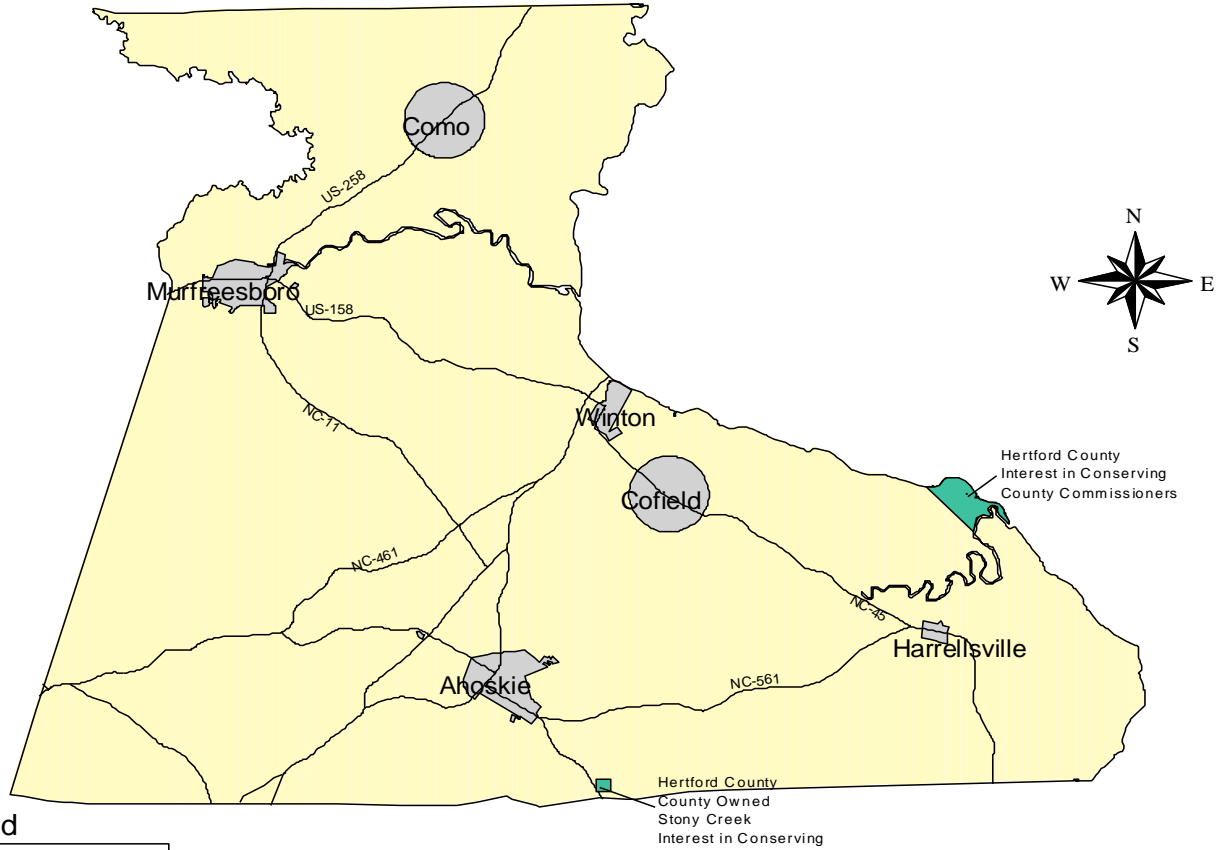
Gene Foxworth, GIS Planner

Mid-East Commission

**NC DENR Open Spaces Plan
Mid-East Region
Beaufort, Bertie, Hertford, Martin, and Pitt Counties
Beaufort County Conservation**



NCDENR Open Spaces Plan
 Mid-East Region
 Beaufort, Bertie, Hertford, Martin, and Pitt Counties
 Proposed Hertford County Conservation

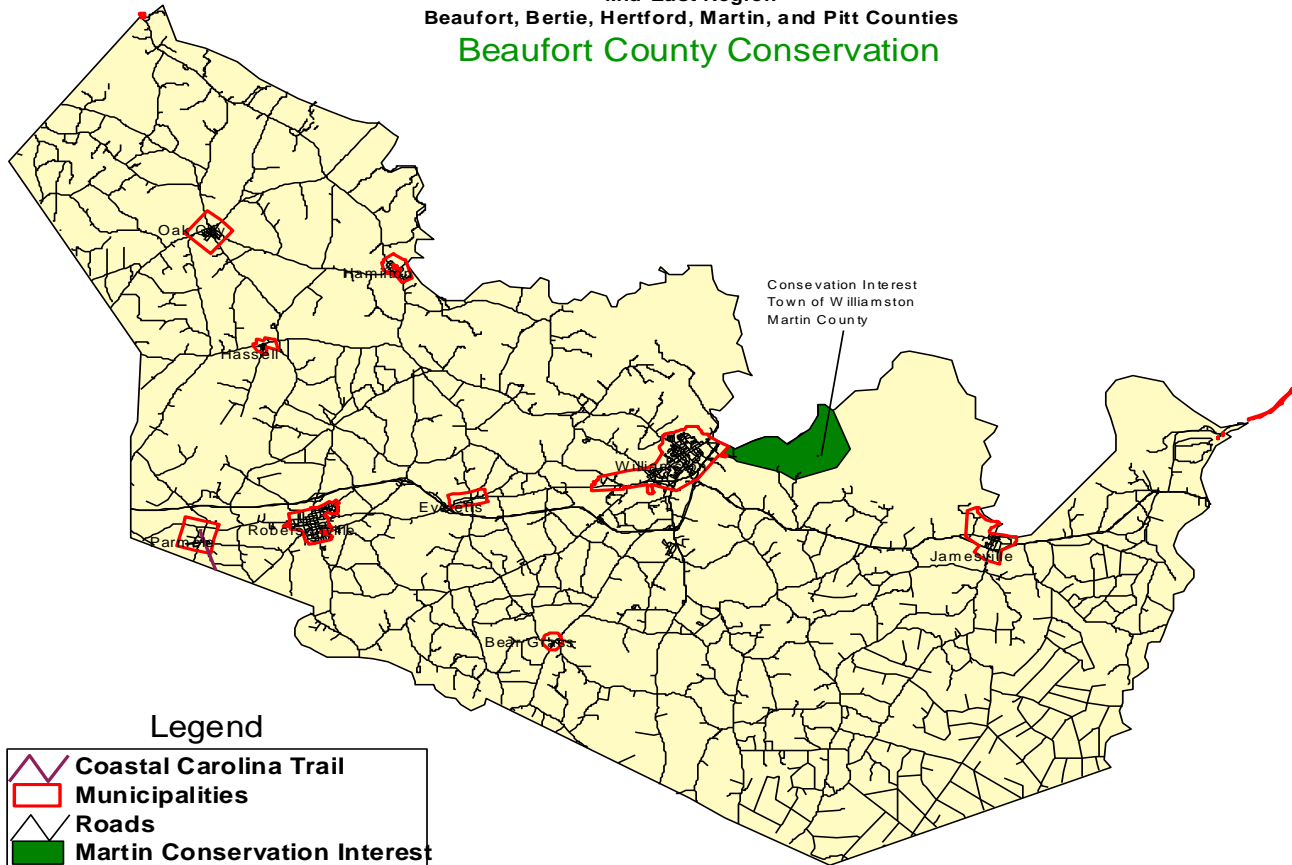


Legend

- Hertford County Conservation Interest
- Hertford Primary Roads
- Hertford Municipalities
- Hertford County

Mid-East Commission
 Planning Department
 Gene Foxworth
 Data Source: CGI/A Feb., 2002
 Dated: 2/17/04

NCDENR Open Spaces Plan
Mid-East Region
Beaufort, Bertie, Hertford, Martin, and Pitt Counties
Beaufort County Conservation



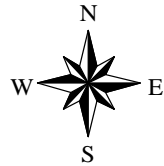
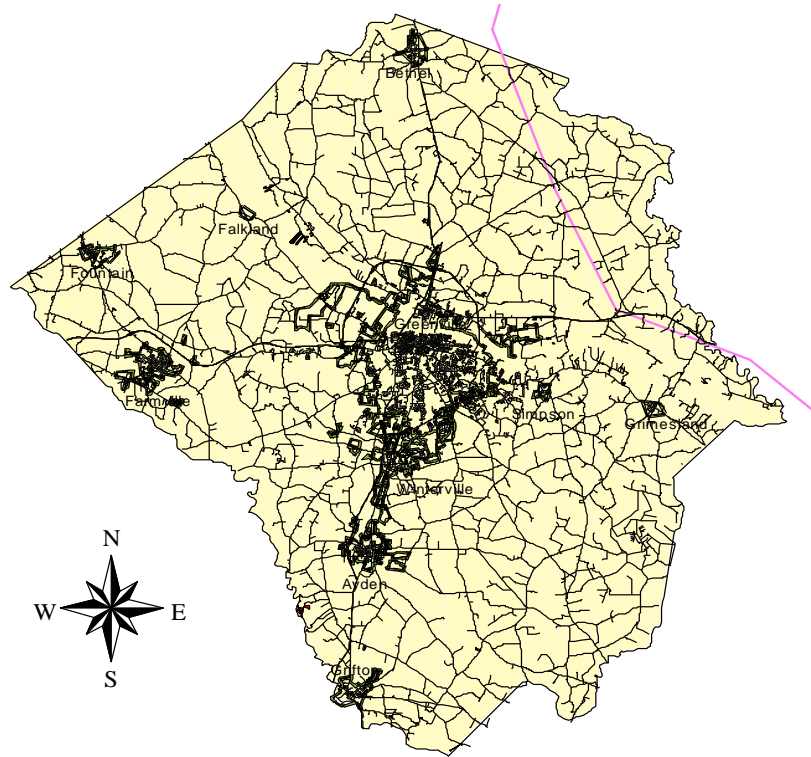
Legend

-  Coastal Carolina Trail
-  Municipalities
-  Roads
-  Martin Conservation Interest



Mid-East Commission
 Planning Department
 Gene Foxworth
 Data Source: CGIA Feb, 2002
 Dated: 2/17/04
The Map is a compilation of information from several different sources. The Mid-East Commission assumes no responsibility for the accuracy of this data.

**NCDENR Open Spaces Plan
Mid-East Region
Beaufort, Bertie, Hertford, Martin, and Pitt Counties
Pitt County Conservation**

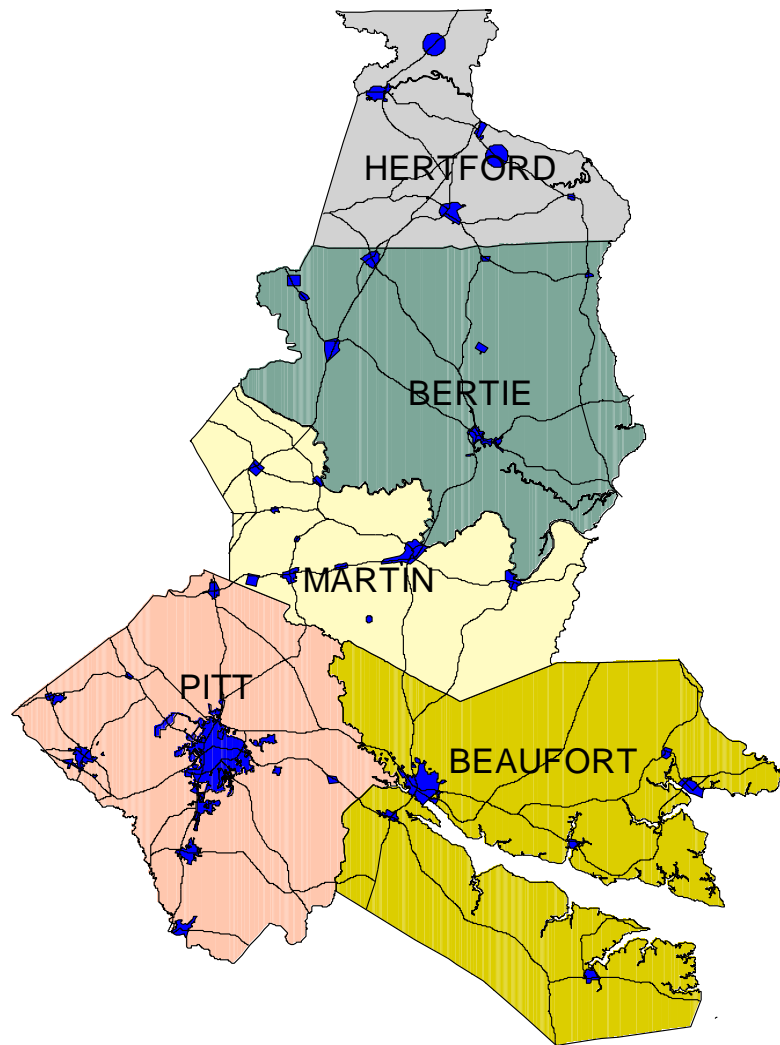


Mid-East Commission
Planning Department
Gene Foxworth

This map represents a compilation of information from multiple sources, and at different scales, which may result in inconsistencies among the features represented on this map. The Mid-East Commission assumes no responsibility for the accuracy of the source information.

Legend

	Pitt County Roads
	Municipal
	Coastal Carolina Trail
	Flood Buyout Properties



Regional Progress Reports



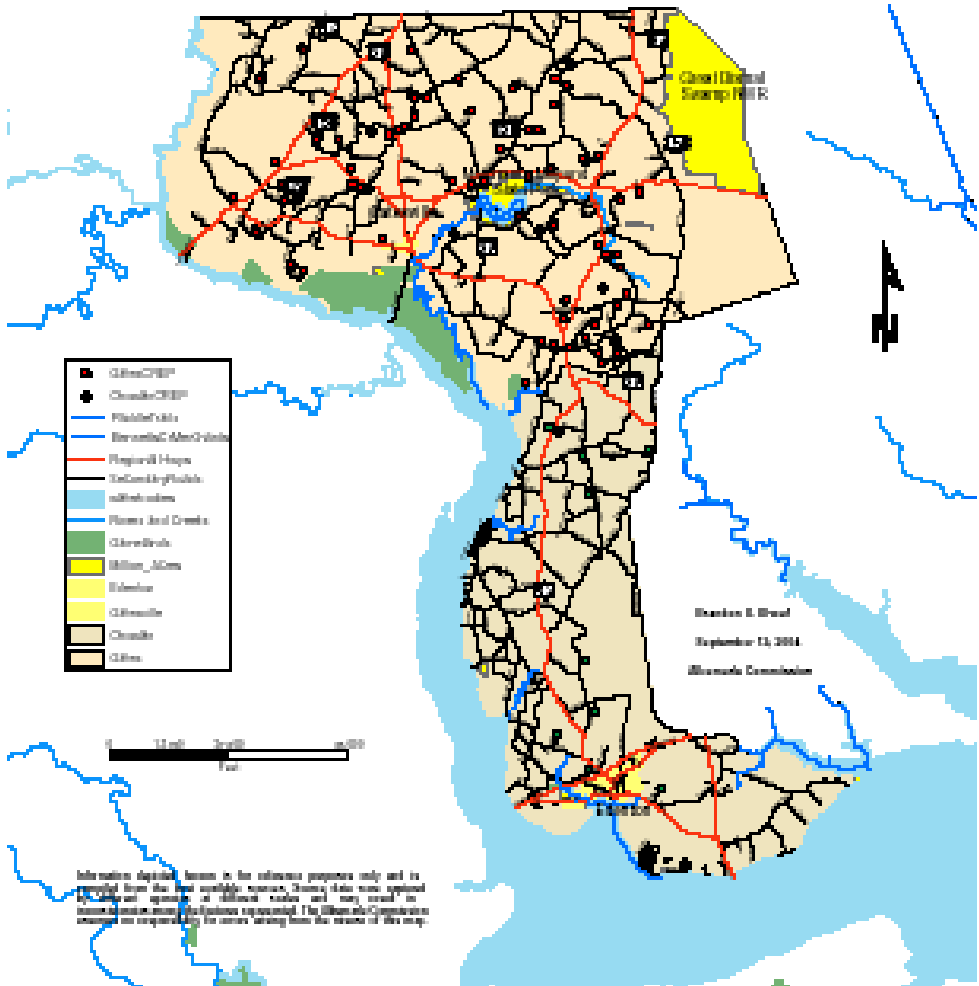
Albemarle Commission

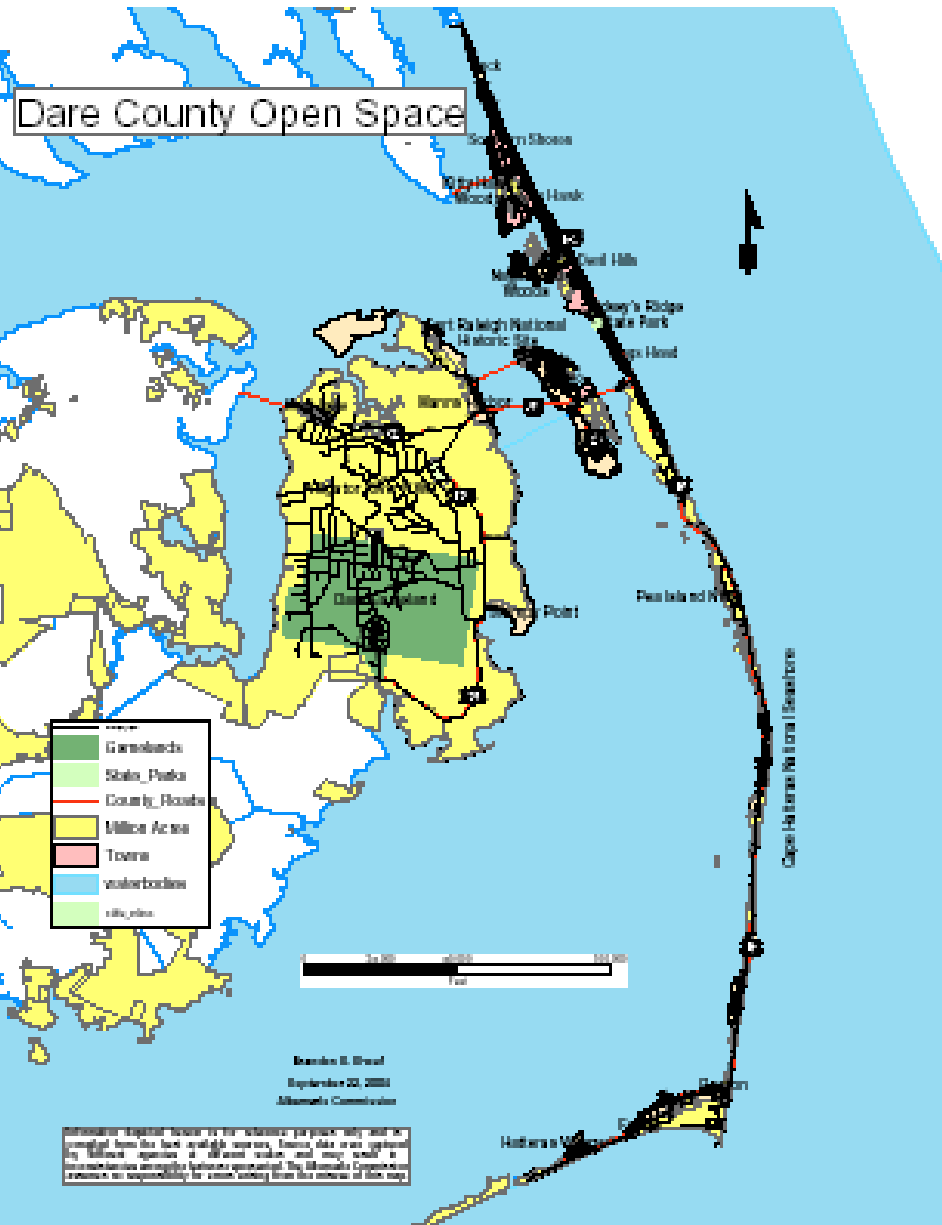
Regional Open Space Strategy

Brandon Shoaf, GIS Planner

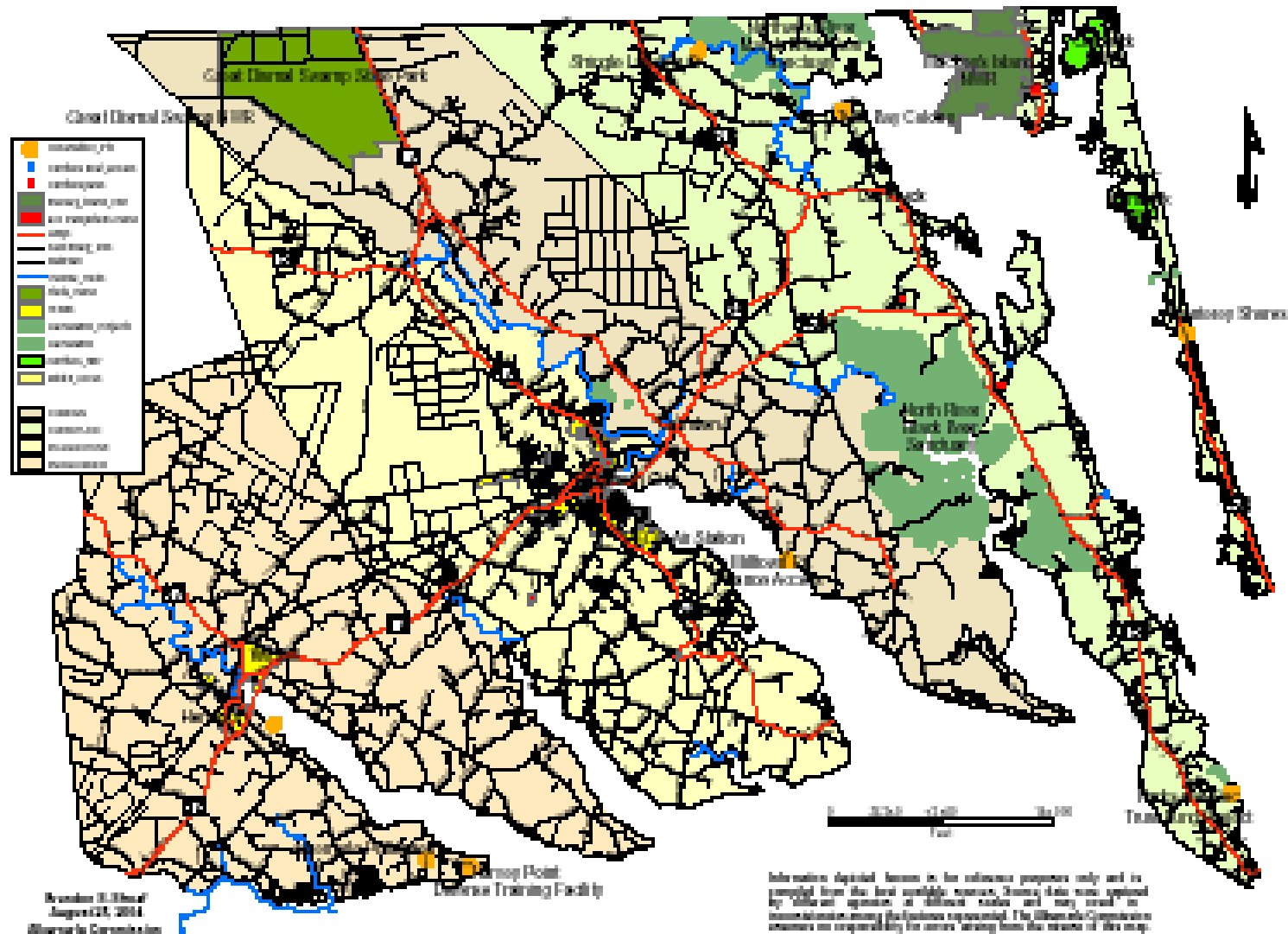
Albemarle Commission

Open Space in Chowan and Gates Counties



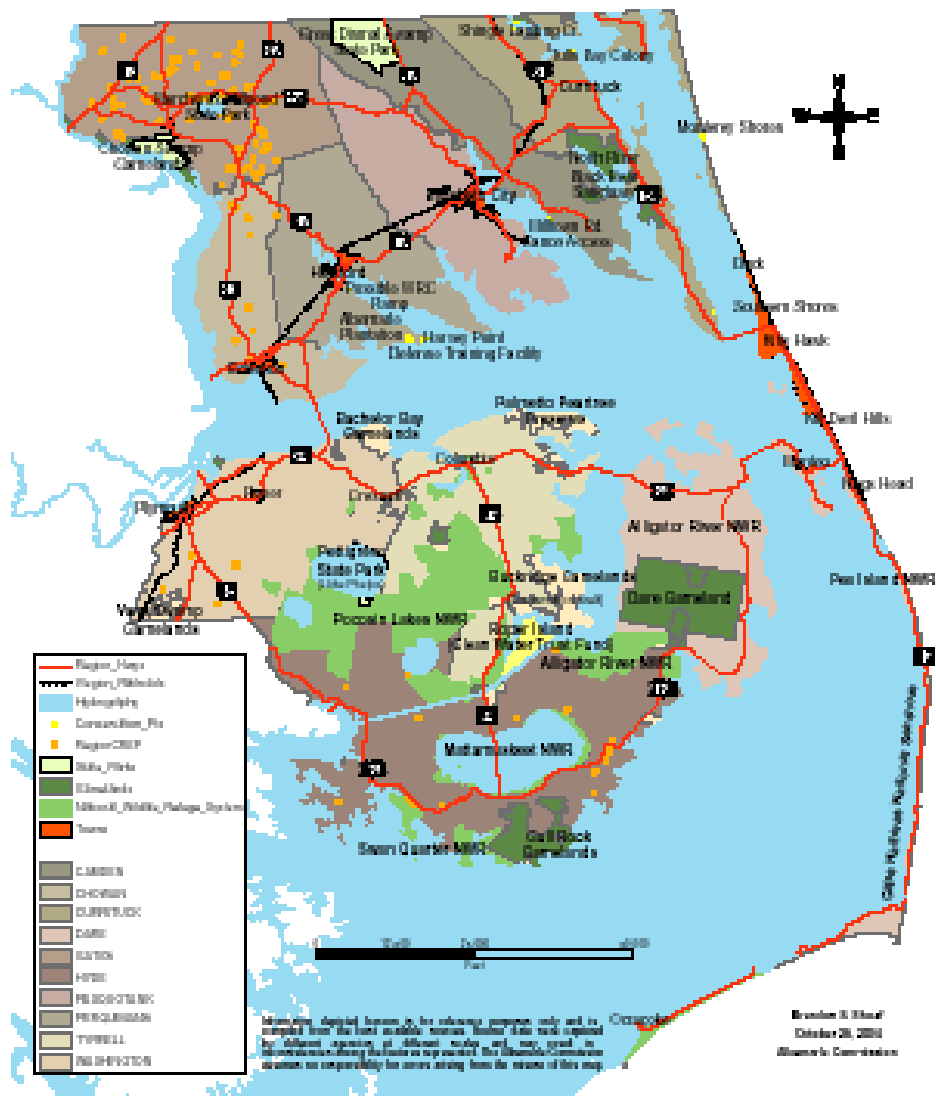


Open Space in Camden, Currituck, Pasquotank, Perquimans Counties



Information displayed herein is for reference purposes only and is provided from the best available sources. Finding data were updated by the data collector at different dates and may result in some information shown here being out-of-date. The Maritime Commission assumes no responsibility for errors arising from the use of this map.

Albemarle Regional Open Space Map



One
North Carolina
Naturally

