

Albemarle-Pamlico Watershed- Estuary Study (APWES)

Ecosystem services
science to inform
watershed & coastal
management

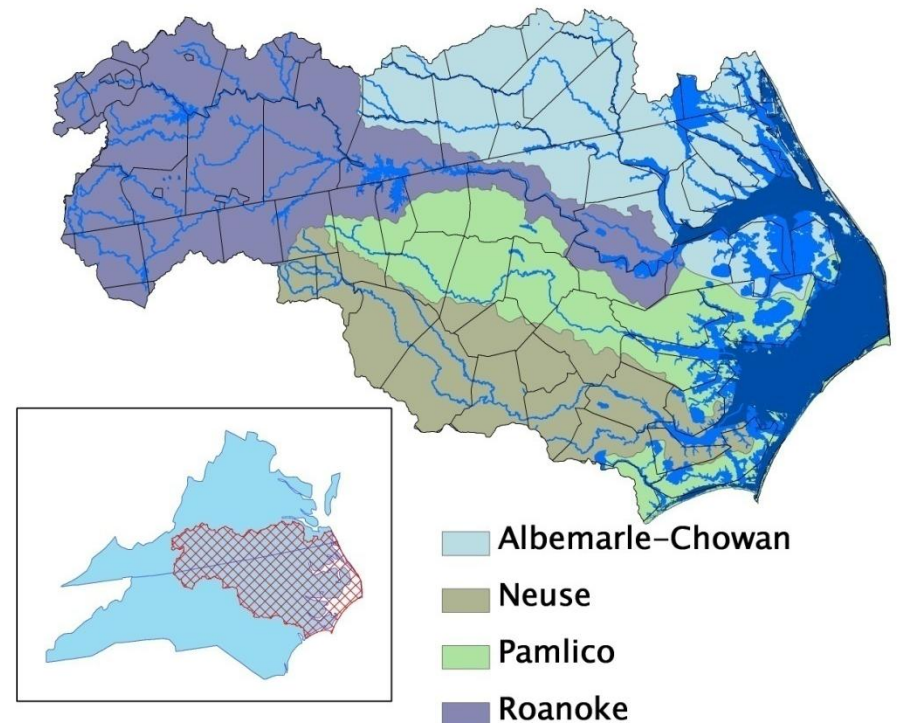
Darryl Keith, ORD/NHEERL/AED

401-782-3135 keith.darryl@epa.gov

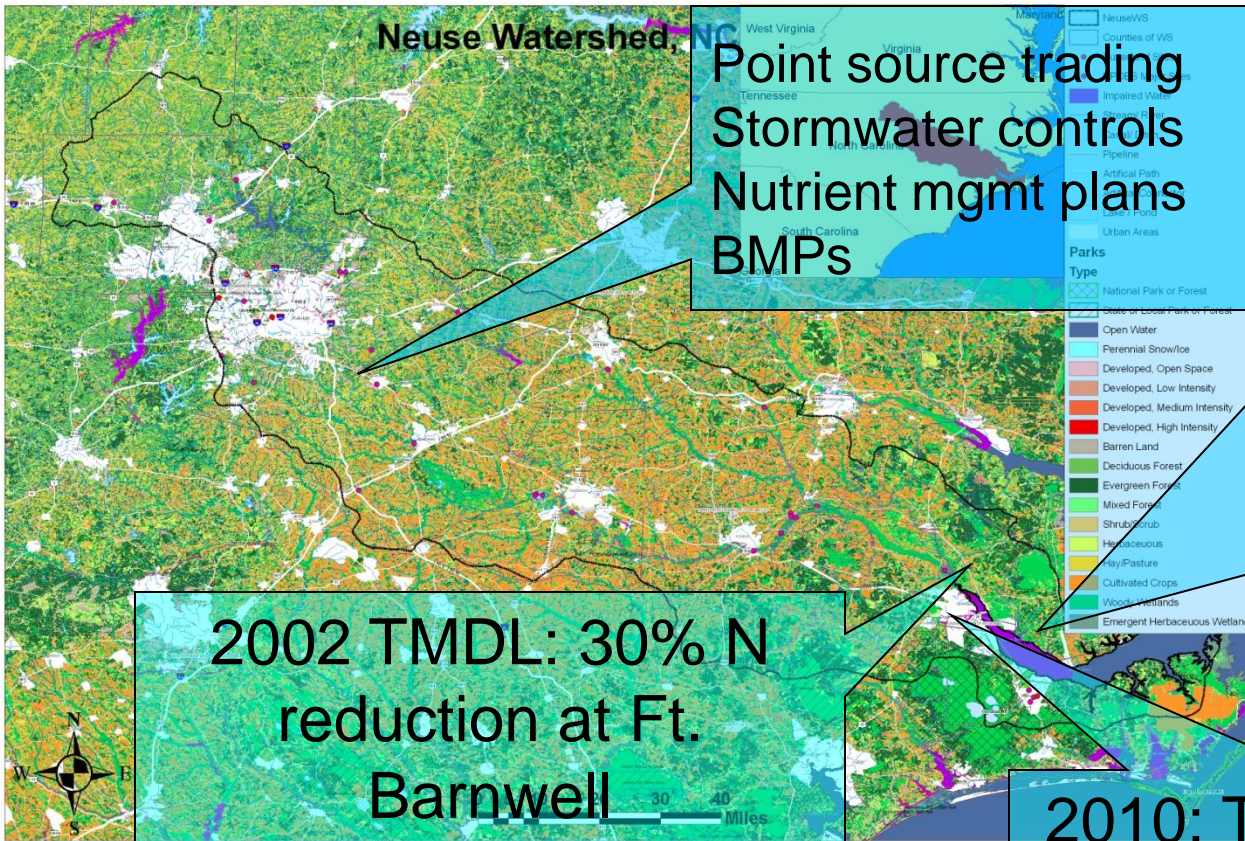
Brenda Rashleigh, ORD/NERL/ERD

706-355-8148 rashleigh.brenda@epa.gov

EPA's ESC: <http://portal.epa.gov>



Neuse River Estuary TMDL

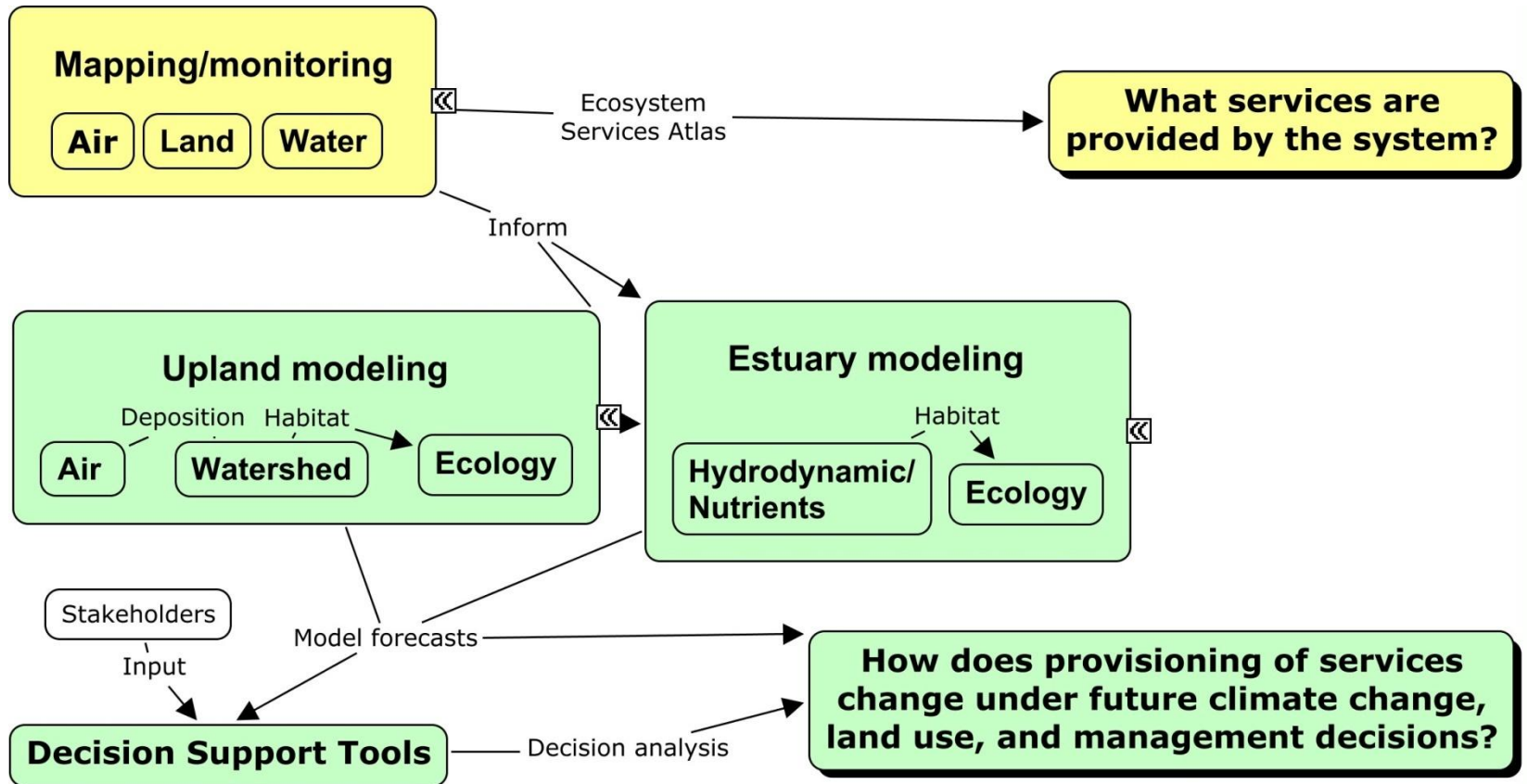


1995

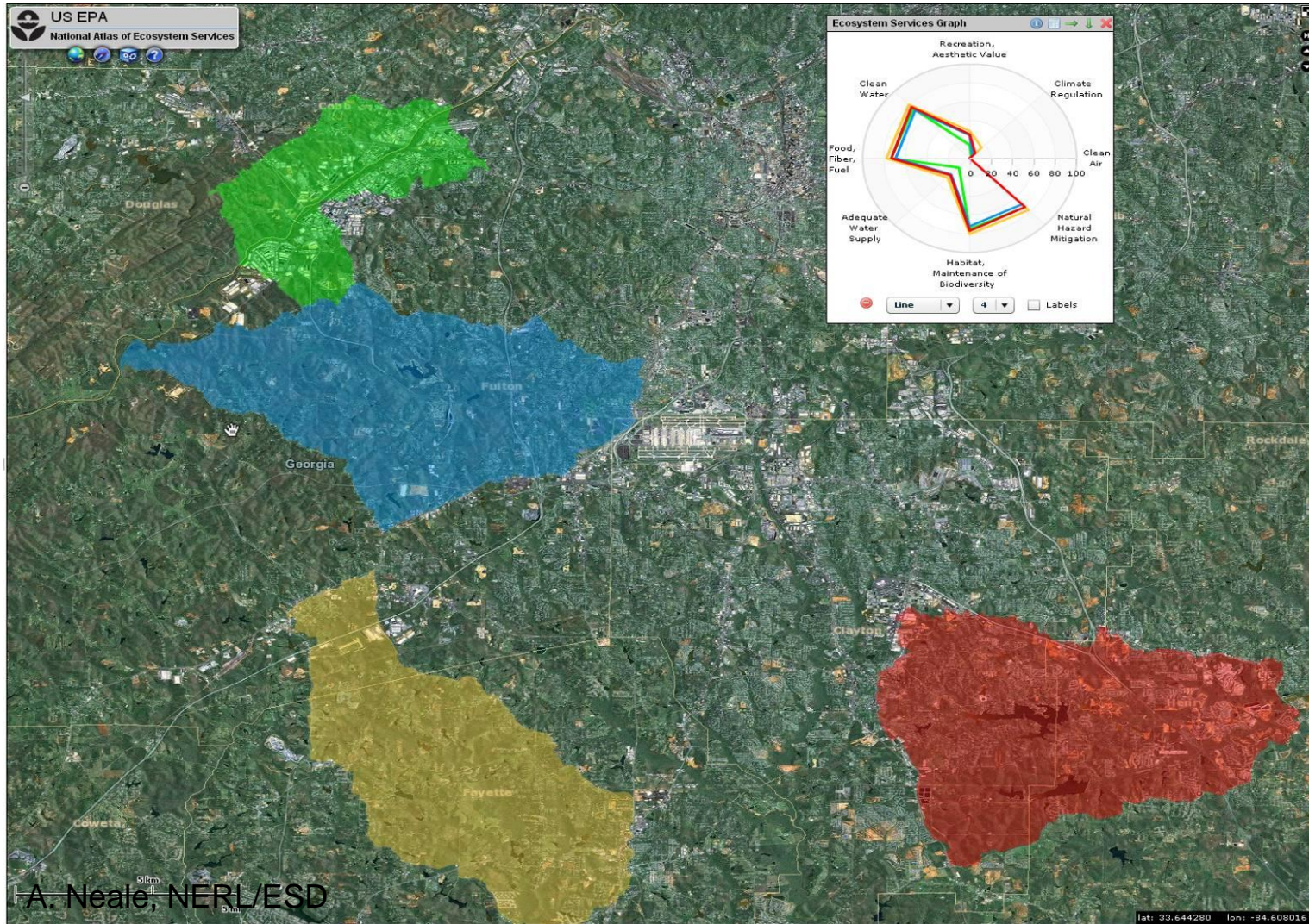


2010: Target not met –
how meet target and
maximize services?

Research Efforts and Questions

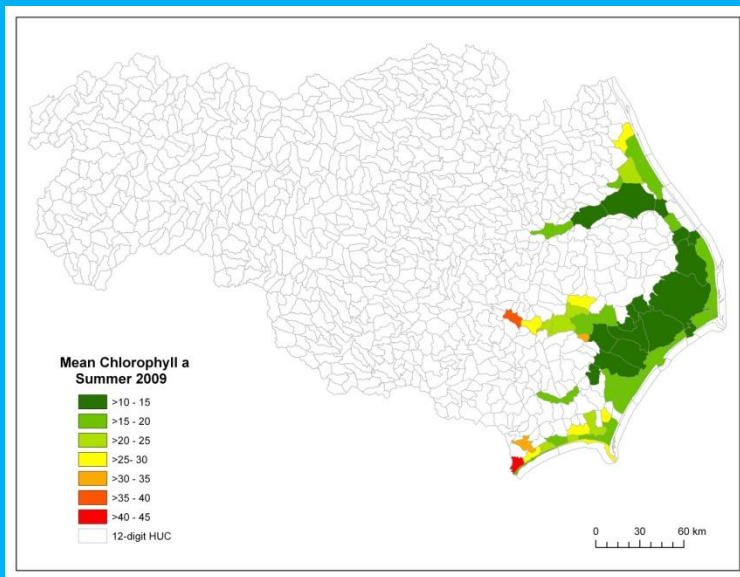


ESRP National Atlas

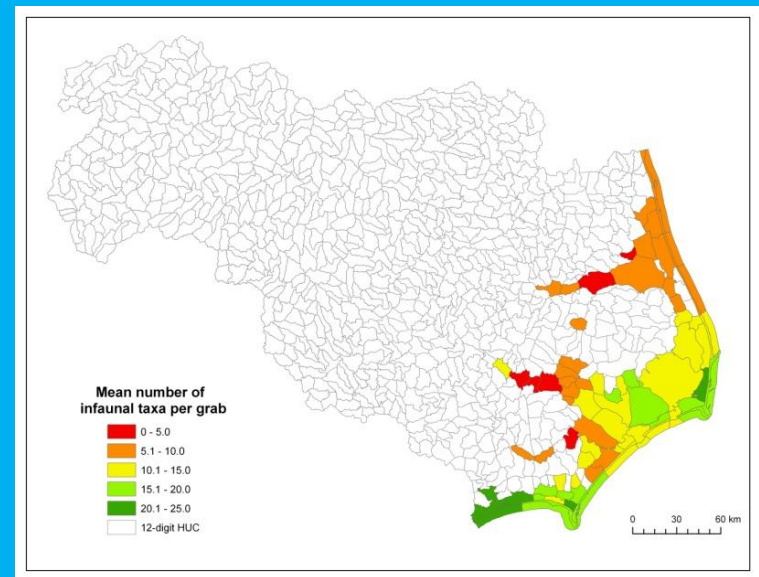


Albemarle-Pamlico Portal in Atlas

Clean Water



Biodiversity



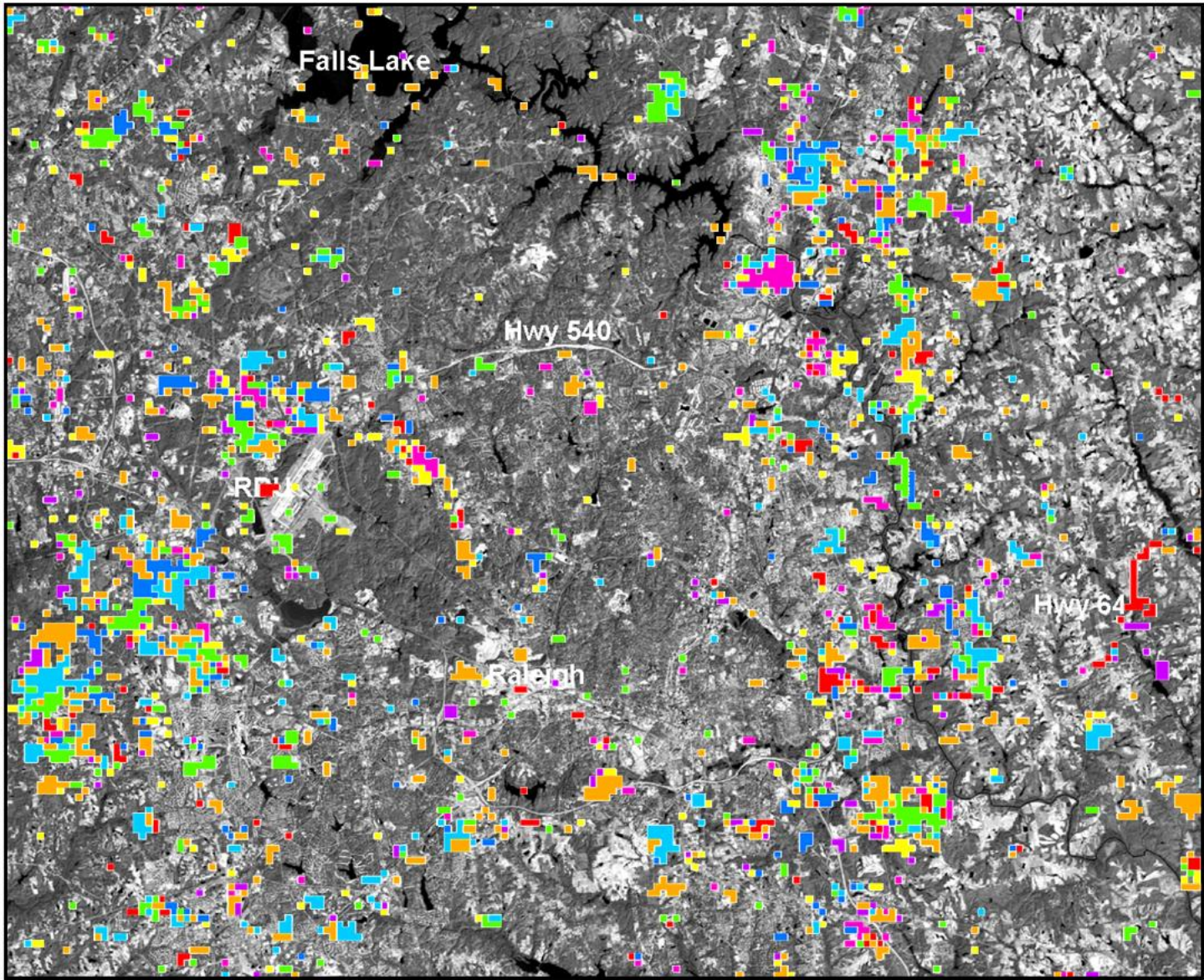
MODIS Land-Cover Change

Raleigh, NC (2001- 2008)

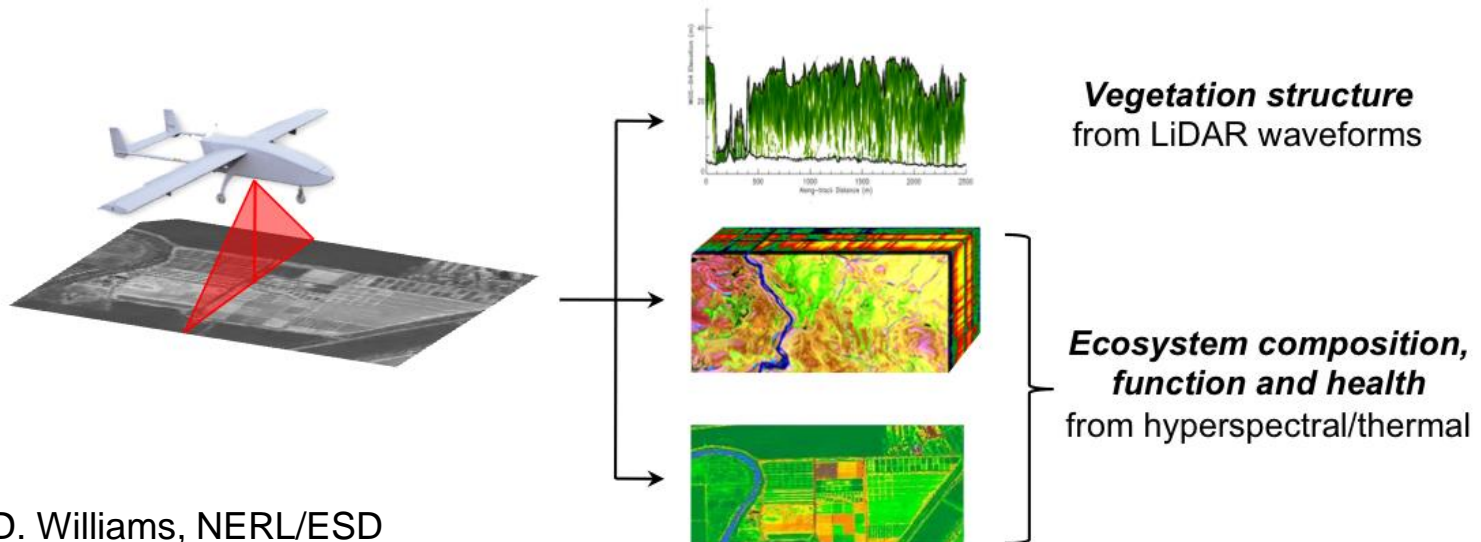
Landsat ETM+ Pan (15m) Backdrop



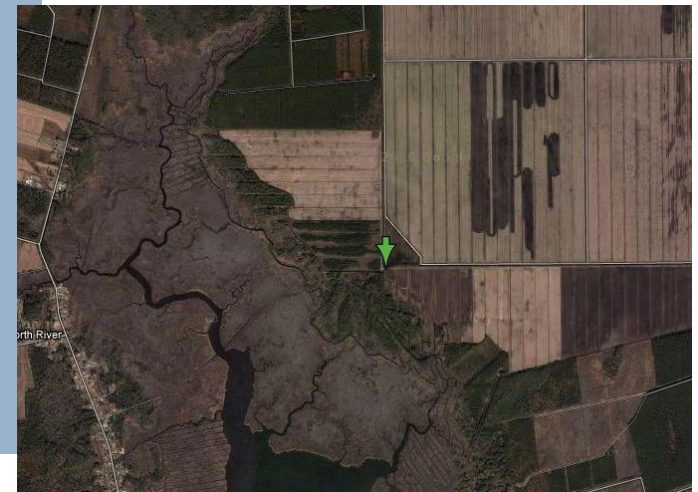
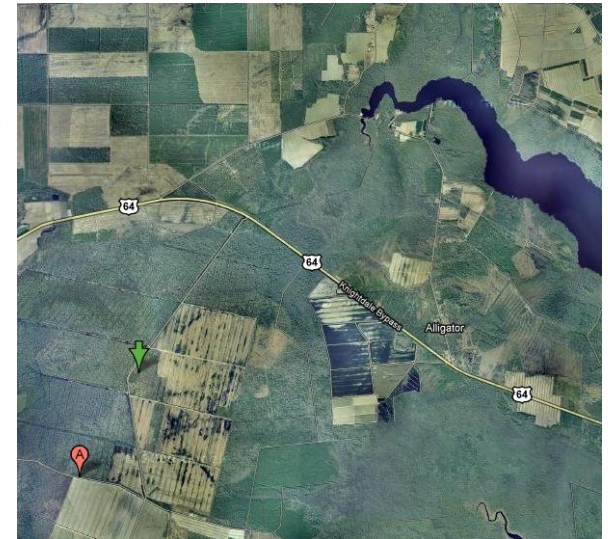
Land-Cover Change



Hyperspectral and LiDAR Sensors

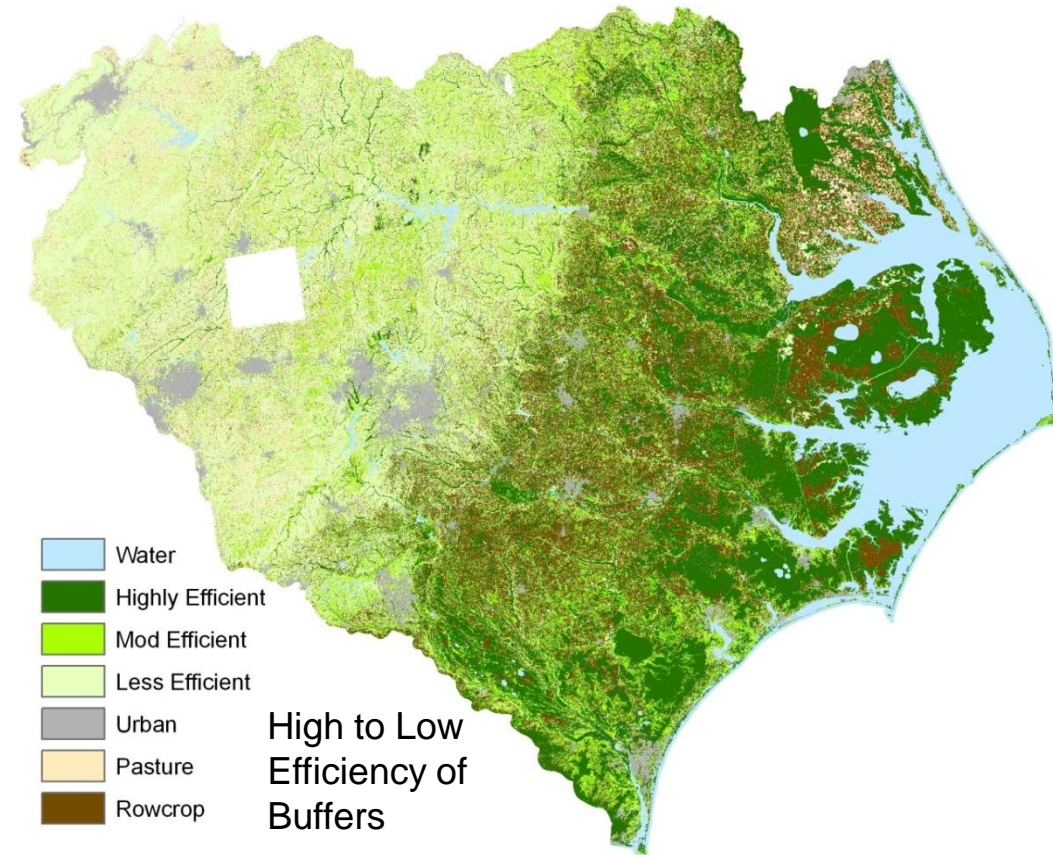


N_r Research in Tidal Wetlands



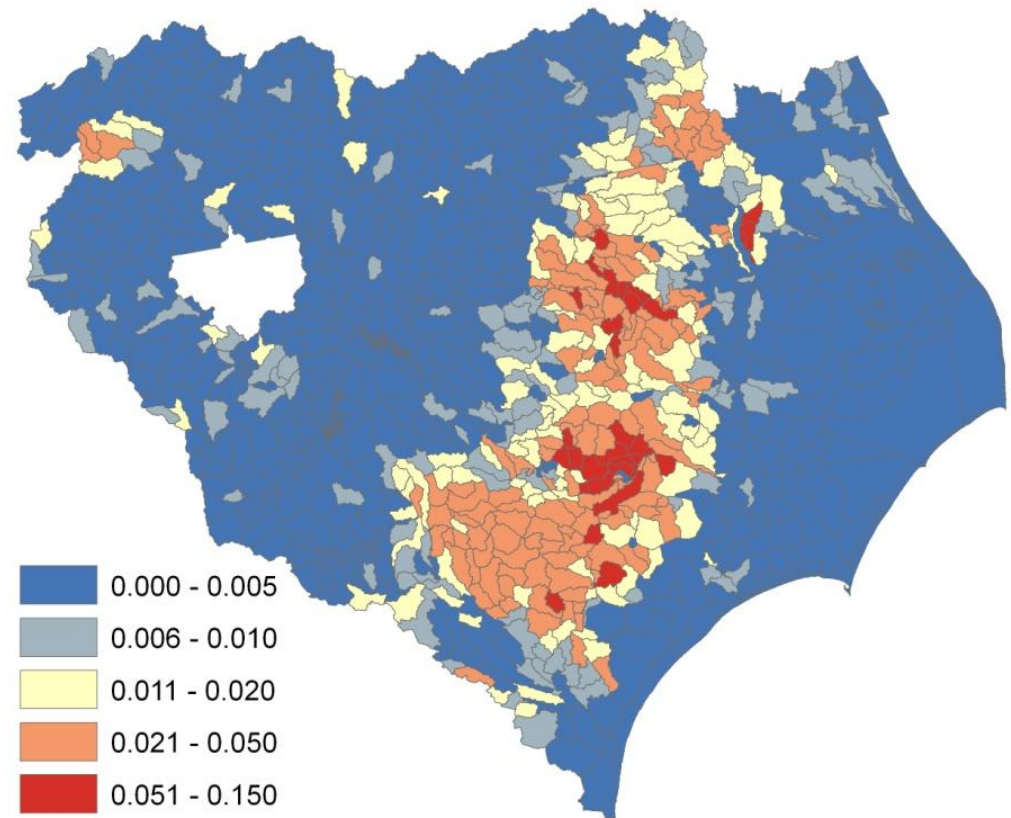
Incorporating Landscape Components in GIS Riparian Models

- Where are effective buffers?
- Influenced by:
 - Soil drainage, texture, carbon availability
 - Slope
 - Landscape position
 - Flows: surface vs. subsurface
- Combine data layers to map buffer effectiveness



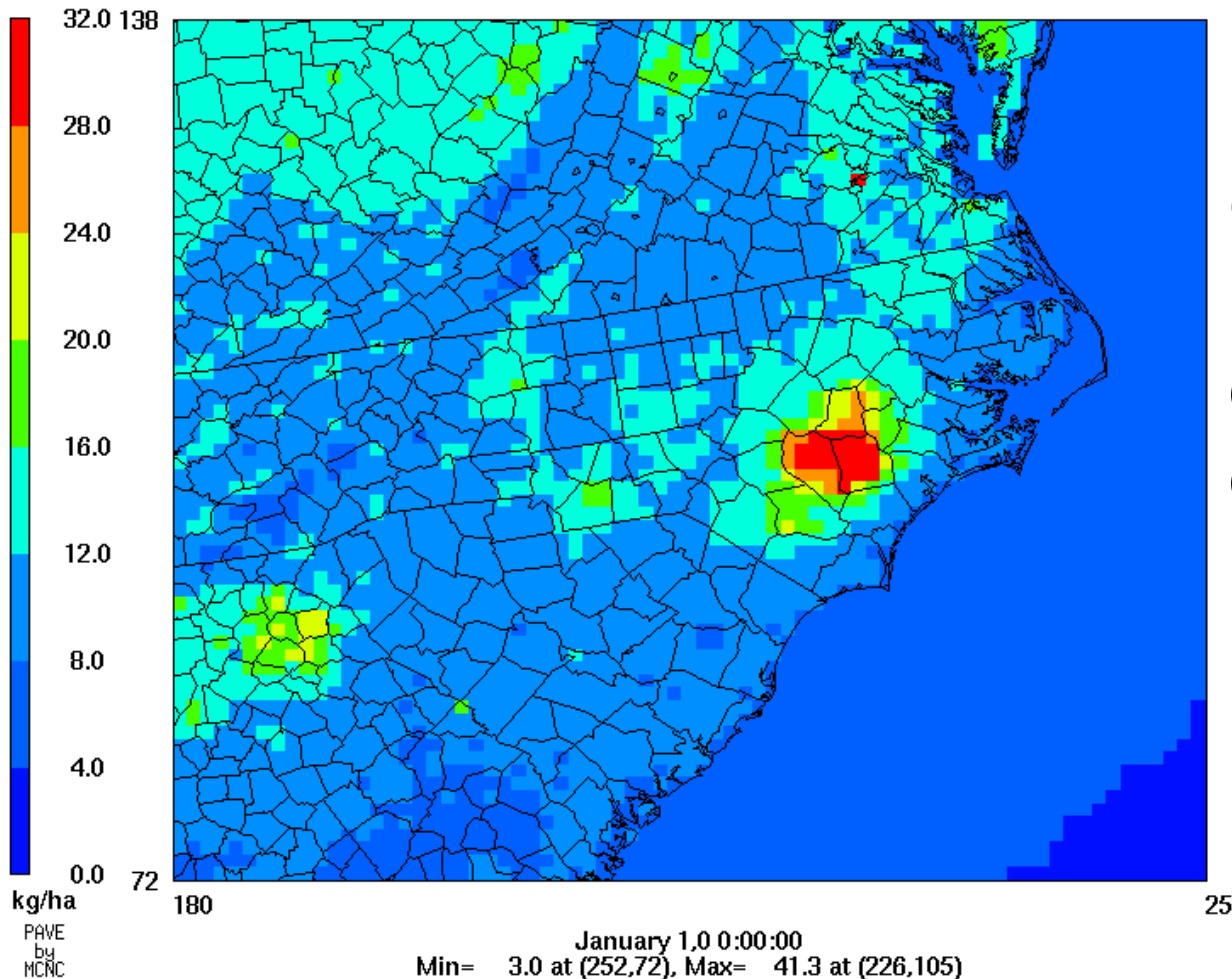
Incorporating Landscape Components in GIS Riparian Models

- Where does high-N Ag runoff interact with efficient buffers or lack buffers?
- High-N crops and CAFOs in well-drained fields identified
- Flow-path analysis connects crops to buffers & streams to determine buffer width
- Use to target conservation and buffer restoration



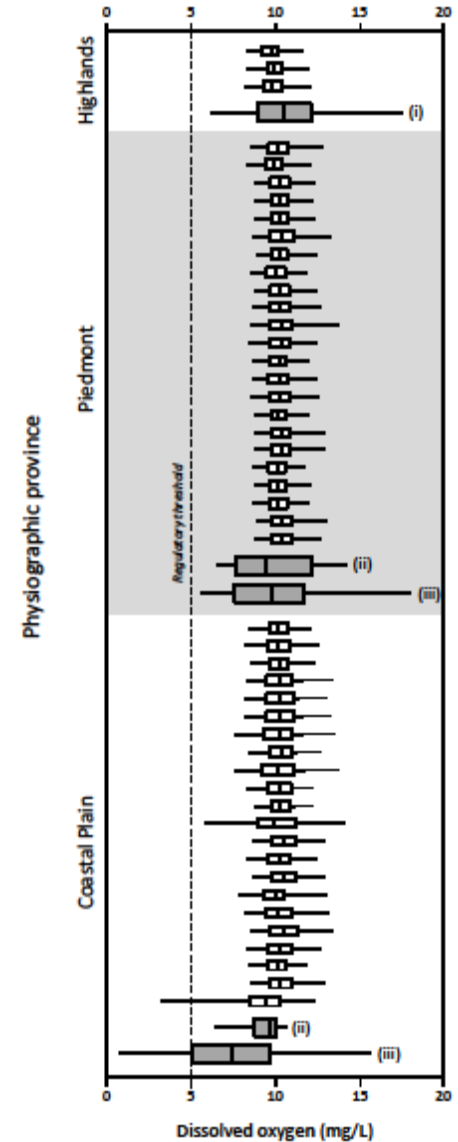
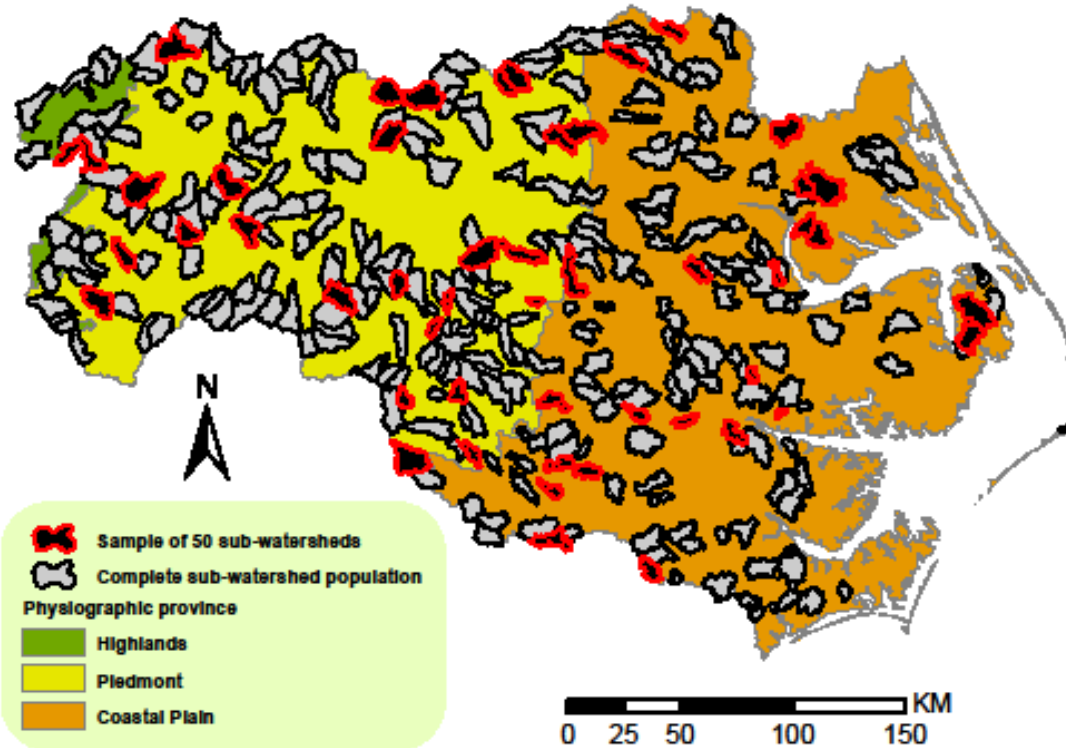
Proportion of HUC12 with High N and No Buffer

Air Quality Modeling

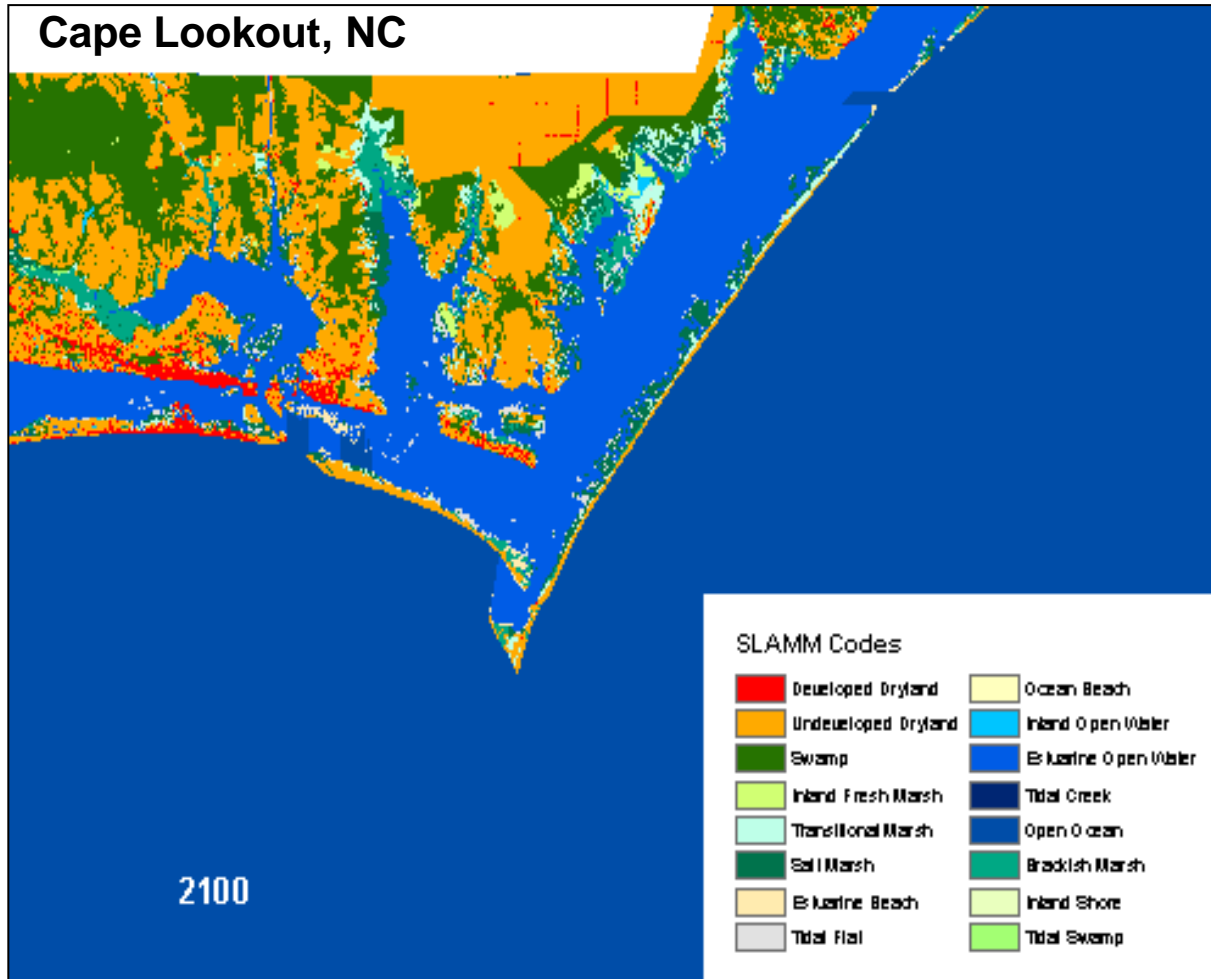


CMAQ
Nitrogen
deposition
output (R.
Dennis)

Integrated Watershed Modeling in FRAMES



Sea Level Rise Modeling



SLAMM output - IPCC A1B 2100 predictions (C. Erickson)



Decision Analysis for a Sustainable Environment, Economy, & Society

Step 1: Understand Context Step 2

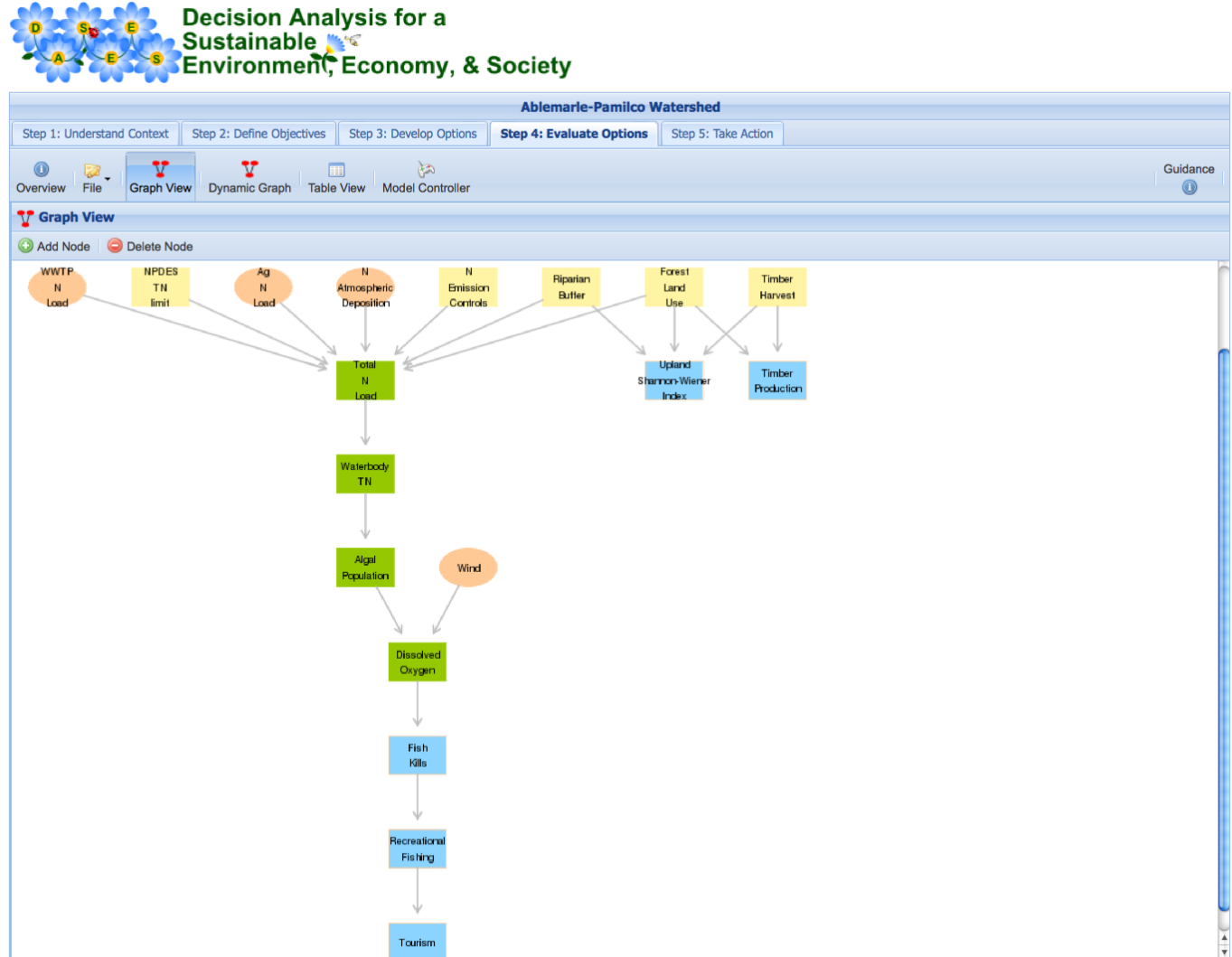
Map Landscape DPSIR Social Netw

Control Panel

Layers

- EcoRegions (EcoMap 2007) of
- Sub-watersheds
- Watersheds.kmz
- MyWATERS
- Surfacewater Features
- EPA Water Program Feature

Add KML/KMZ:



Products and Summary

- Products
 - Maps, models, and data
 - Portal in National Atlas - for APNEP
 - Coordinated nutrient work for NCDENR
 - DASEES Decision Support Tool for Neuse
- Summary
 - Informs management decisions
 - Adaptive management in a systems context (EBM)
 - Examines tradeoffs or synergies among services
 - New focus on sustainability - ecological, social, and economic benefit