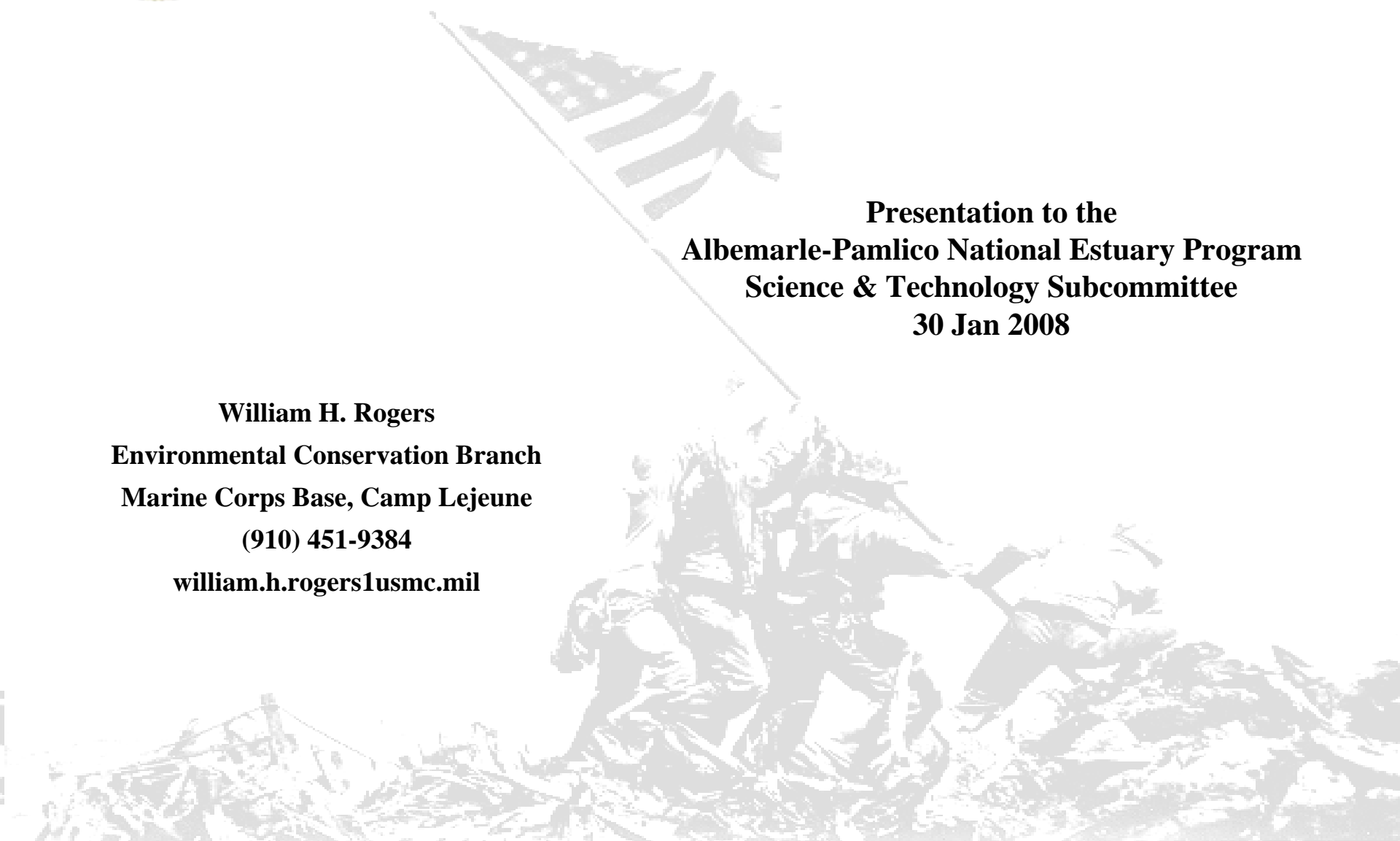




# North Carolina Onslow Bight Conservation Forum

**Presentation to the  
Albemarle-Pamlico National Estuary Program  
Science & Technology Subcommittee  
30 Jan 2008**

**William H. Rogers  
Environmental Conservation Branch  
Marine Corps Base, Camp Lejeune  
(910) 451-9384  
[william.h.rogers1usmc.mil](mailto:william.h.rogers1usmc.mil)**





# North Carolina Onslow Bight Conservation Forum

Coalition of organizations with interest in conserving the natural resources of eastern North Carolina through land acquisition, conservation easements, sound land management practices, and education.

-Memorandum of Understanding (MOU) signed in March 2003.

-The following organizations are signatories to the MOU.

- **Marine Corps Base Camp Lejeune**
- **Marine Corps Air Station Cherry Point**
- **U.S.D.A Forest Service**
- **Natural Resources Conservation Service**
- **NC Department Of Transportation**
- **NC Wildlife Resources Commission**
- **Ducks Unlimited**
- **NC Department of Environment and Natural Resources**
- **Endangered Species Coalition**
- **NC Chapter Of The Nature Conservancy**
- **NC Coastal Federation**
- **NC Coastal Land Trust**



# **Onslow Bight Mission:**

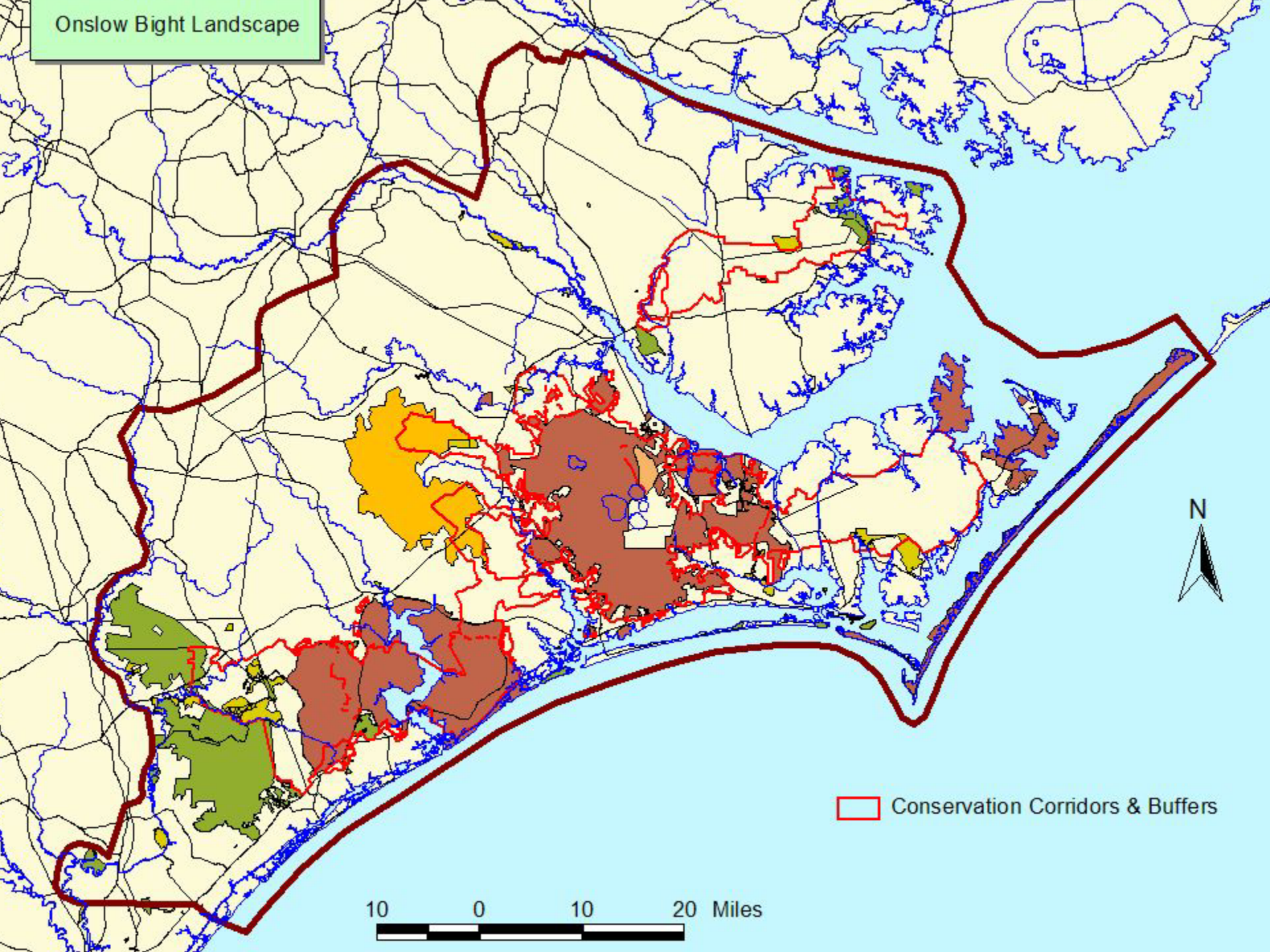
*to develop and implement a strategy  
for the conservation and  
enhancement of biological diversity  
and ecosystem sustainability  
throughout the Onslow Bight  
Landscape compatible with the land  
use objectives of the partners.*



# Onslow Bight Conservation Forum Technical Subcommittees

- **Conservation Reserve Design**
- **Fire Learning Network**
- **Red-cockaded woodpecker**

Onslow Bight Landscape



Conservation Corridors & Buffers

10 0 10 20 Miles



# U.S. Fire Learning Network Vision

- Partnership will work with others to continue to grow and sustain a U.S.-based Fire Learning Network (USFLN)
  - Our vision is to engage *more than 100* landscape projects
  - FLN Landscapes, Networks and Projects serve as *centers of innovation and learning* to:
    - Increase the capacity for fuels reduction
    - Restoration of an ecologically appropriate and culturally acceptable role of fire



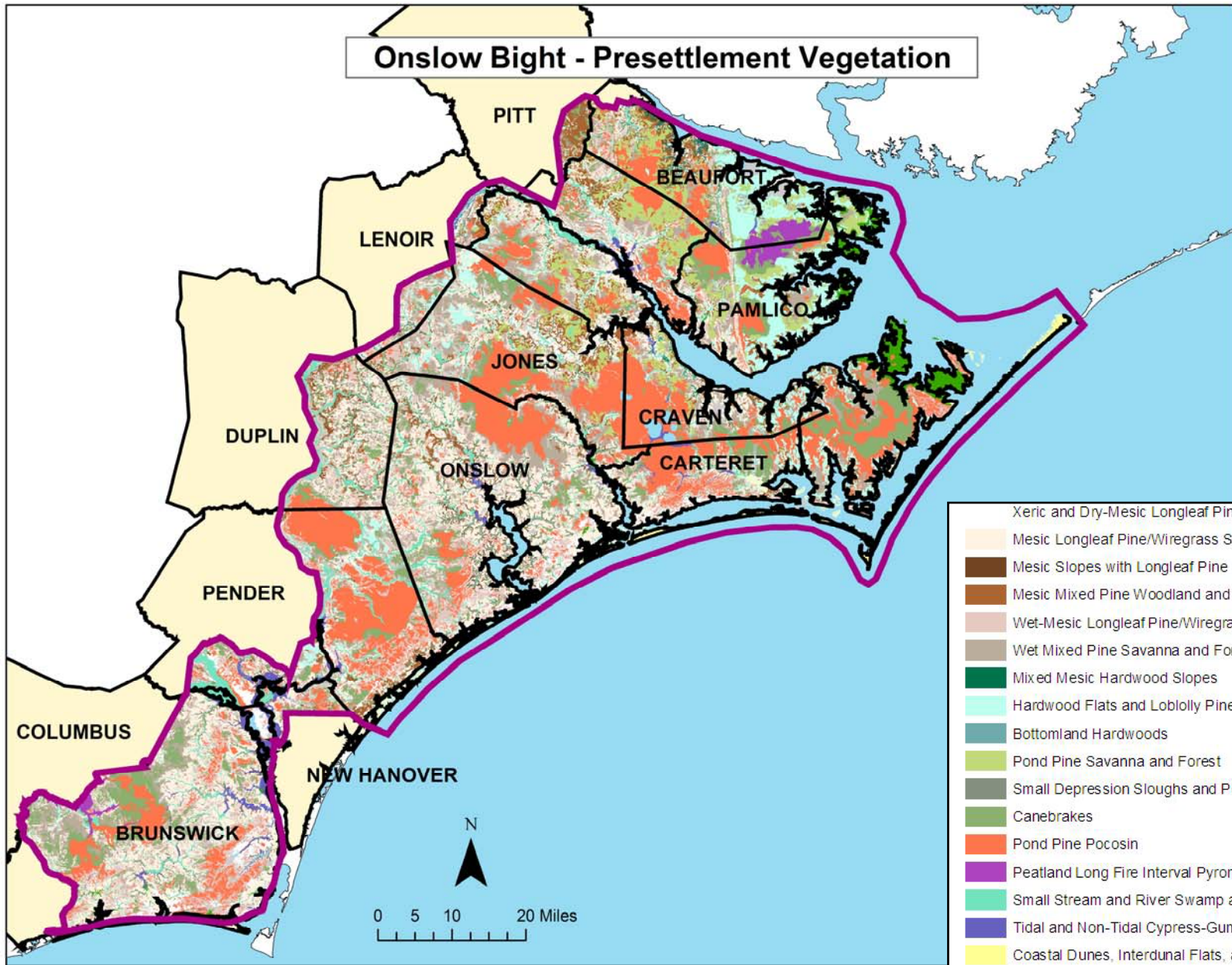
# Onslow Bight Fire Learning Network & LANDFIRE Partners

---

- **Department of Defense**
  - Camp LeJeune & Cherry Point
- **NC Department of Natural Resources**
  - Division of Forest Resources
  - Natural Heritage Program
  - Division of Air Quality
  - State Parks
- **NC State University**
  - Gap Analysis Project
- **Nature Serve**
- **US Forest Service**
- **US Fish & Wildlife Service**
  - Cedar Island Refuge & Endangered Species Office
- **The Nature Conservancy**
  - National Fire Initiative & NC Chapter staff
- **Wildlife Resources Commission**
- **Coastal Land trust**

*40 individuals / 14 agencies in attendance*

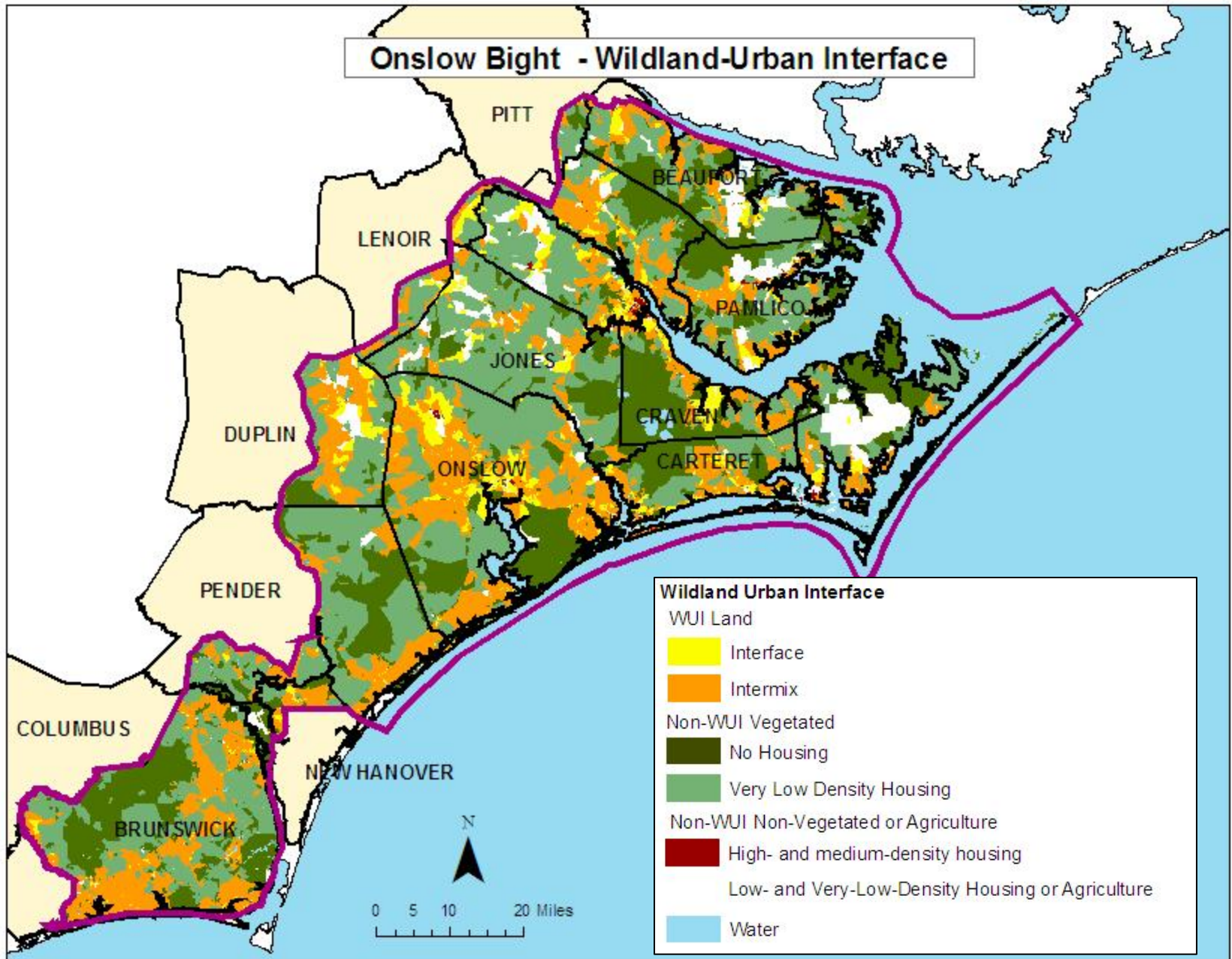
# Onslow Bight - Presettlement Vegetation



- Xeric and Dry-Mesic Longleaf Pine/Wiregrass
- Mesic Longleaf Pine/Wiregrass Savanna
- Mesic Slopes with Longleaf Pine
- Mesic Mixed Pine Woodland and Savanna
- Wet-Mesic Longleaf Pine/Wiregrass Savanna
- Wet Mixed Pine Savanna and Forest
- Mixed Mesic Hardwood Slopes
- Hardwood Flats and Loblolly Pine-Hardwood Flats
- Bottomland Hardwoods
- Pond Pine Savanna and Forest
- Small Depression Sloughs and Ponds, Intermittently Flooded
- Canebrakes
- Pond Pine Pocosin
- Peatland Long Fire Interval Pyromosaic
- Small Stream and River Swamp and Pyrophytic Wetland Mosaic
- Tidal and Non-Tidal Cypress-Gum Swamp
- Coastal Dunes, Interdunal Flats, and Maritime Forest
- Salt and Brackish Marsh
- Brackish Marsh, Oligohaline Marsh and Woody Estuarine Fringe
- Udorthents and Other Disturbed Soils
- Water



# Onslow Bight - Wildland-Urban Interface





# Onslow Bight Red-cockaded Woodpecker Subcommittee Goals

- To identify potential RCW habitat outside of the existing managed areas that is demographically connected to the recovery population
- To develop a searchable GIS-based tool for use by Onslow Bight partners interested in parcels with RCW habitat potential
- To provide a forum for discussion of RCW issues within the Onslow Bight

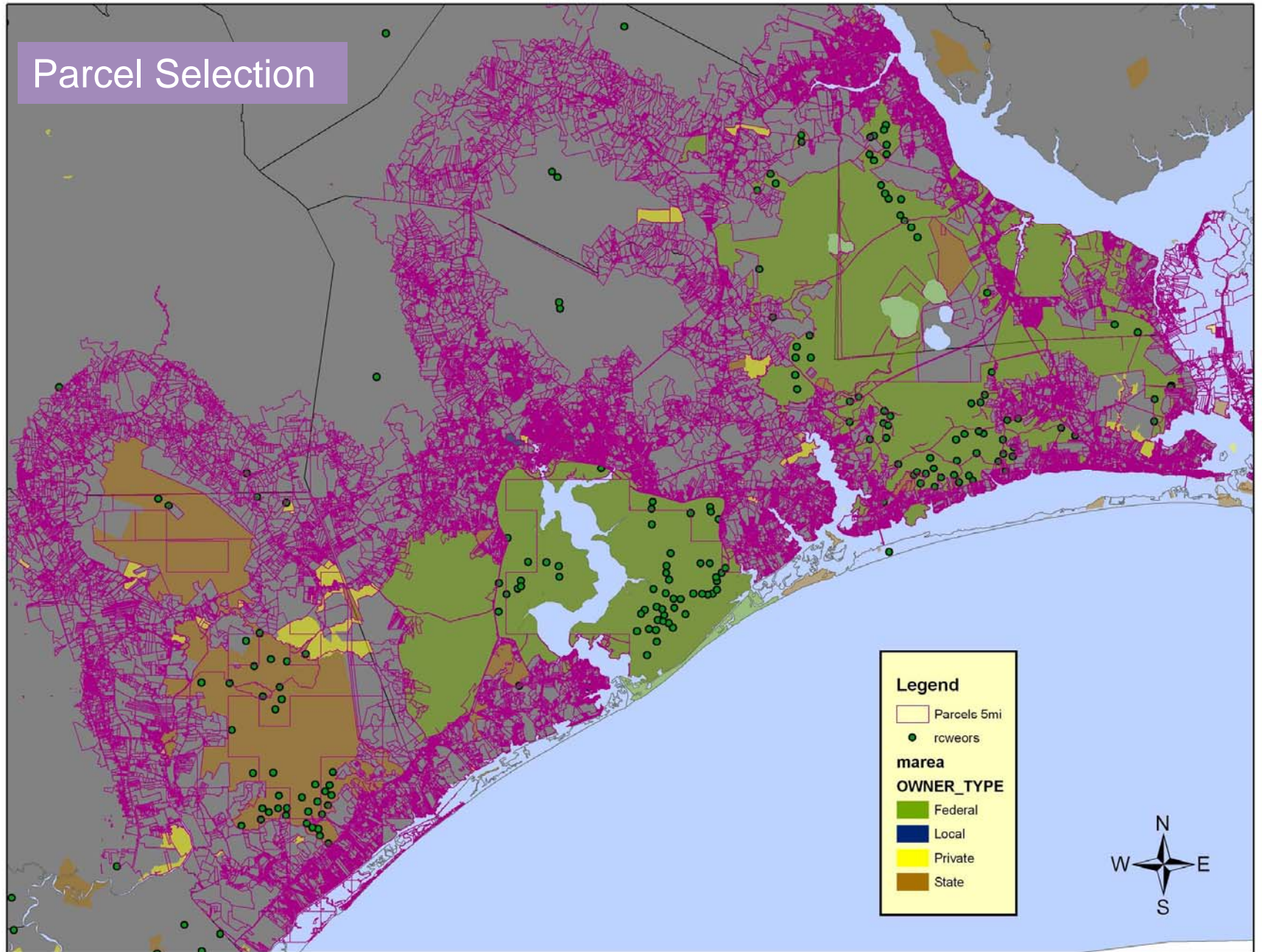


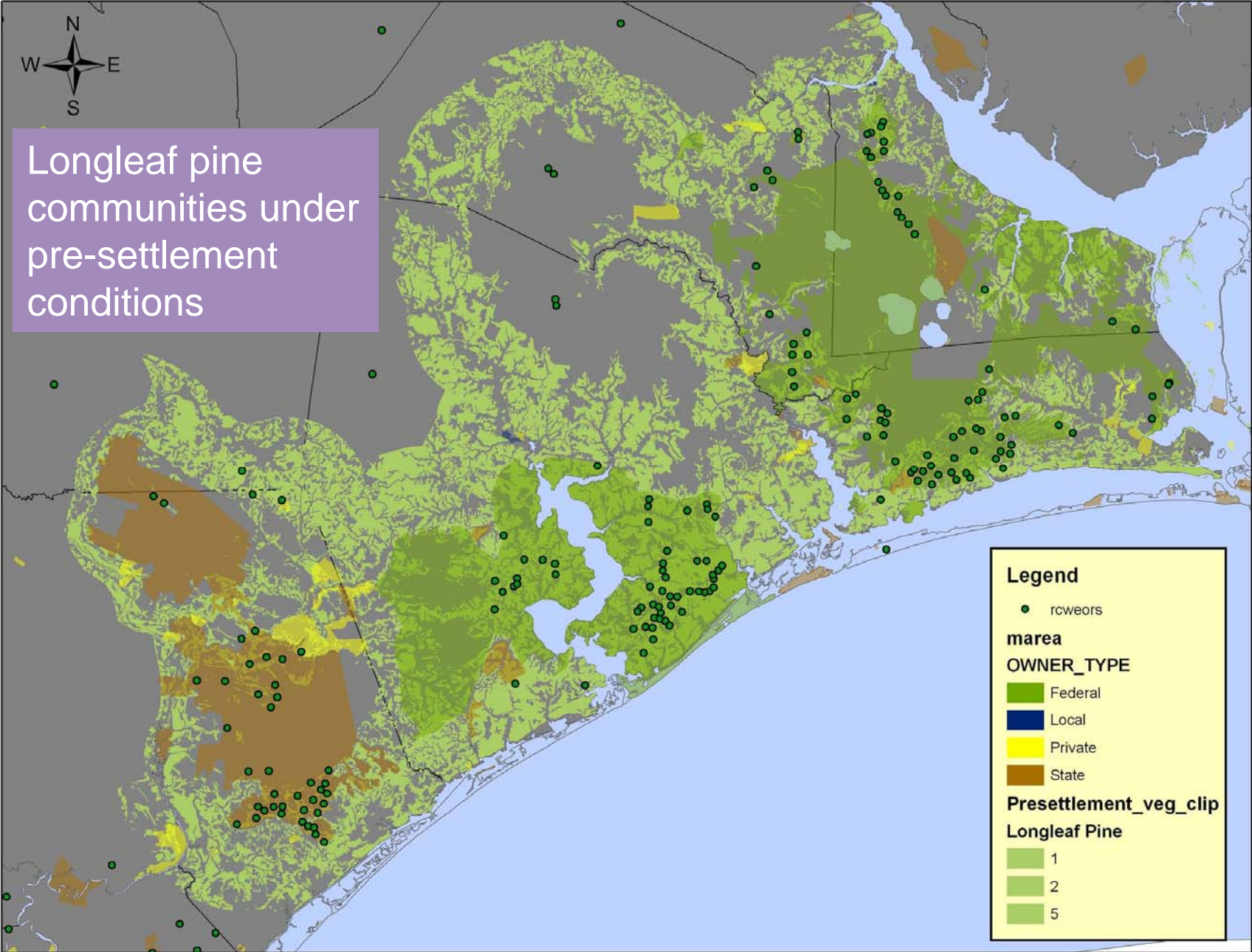
## RCW Habitat Analysis First Steps:

- Create a shapefile containing all parcels within 5 miles of the existing RCW managed areas
- Identify spatial data that may be useful for determining RCW potential and reducing the number of potential parcels



# Parcel Selection







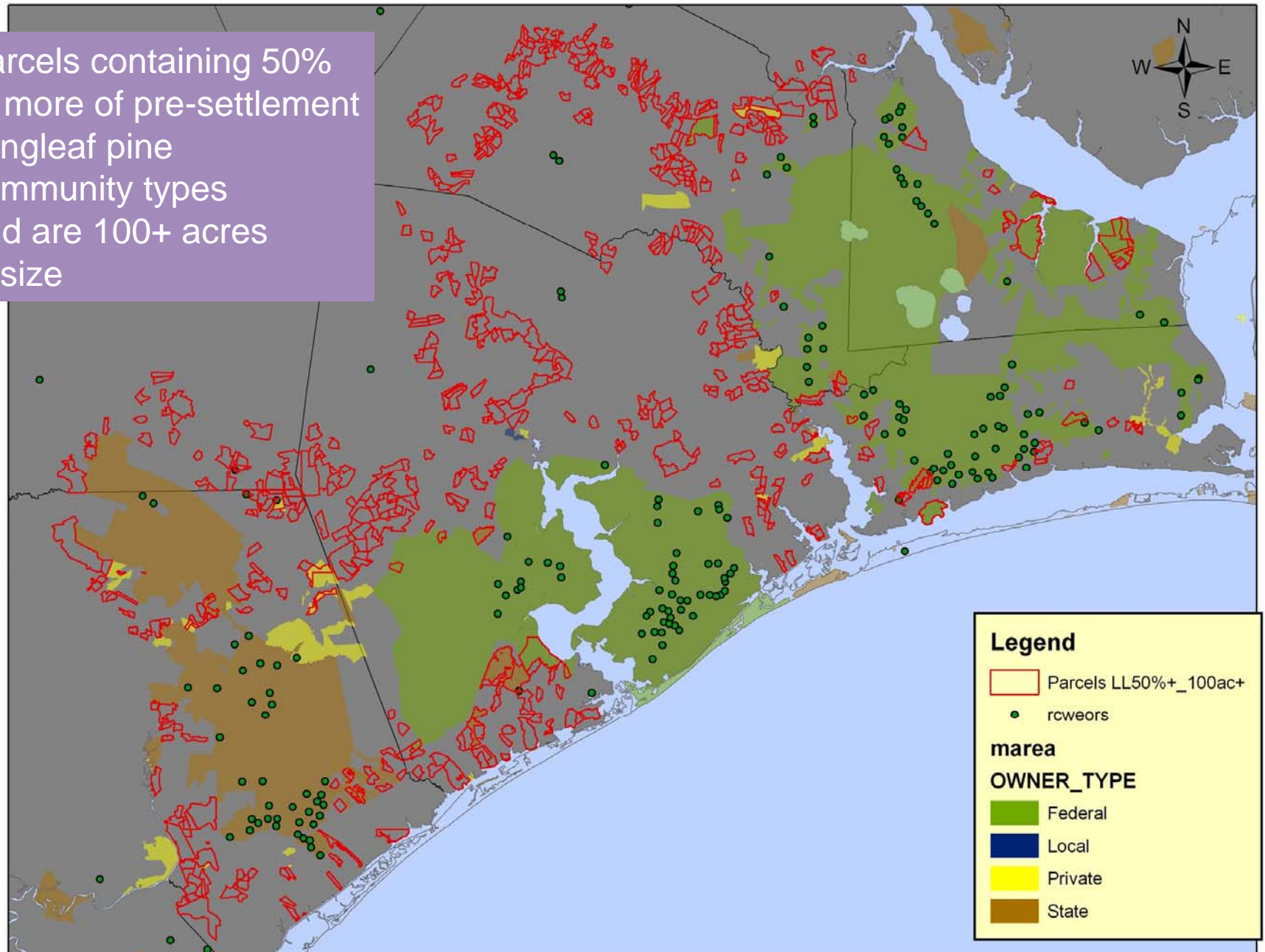
## RCW Habitat Analysis

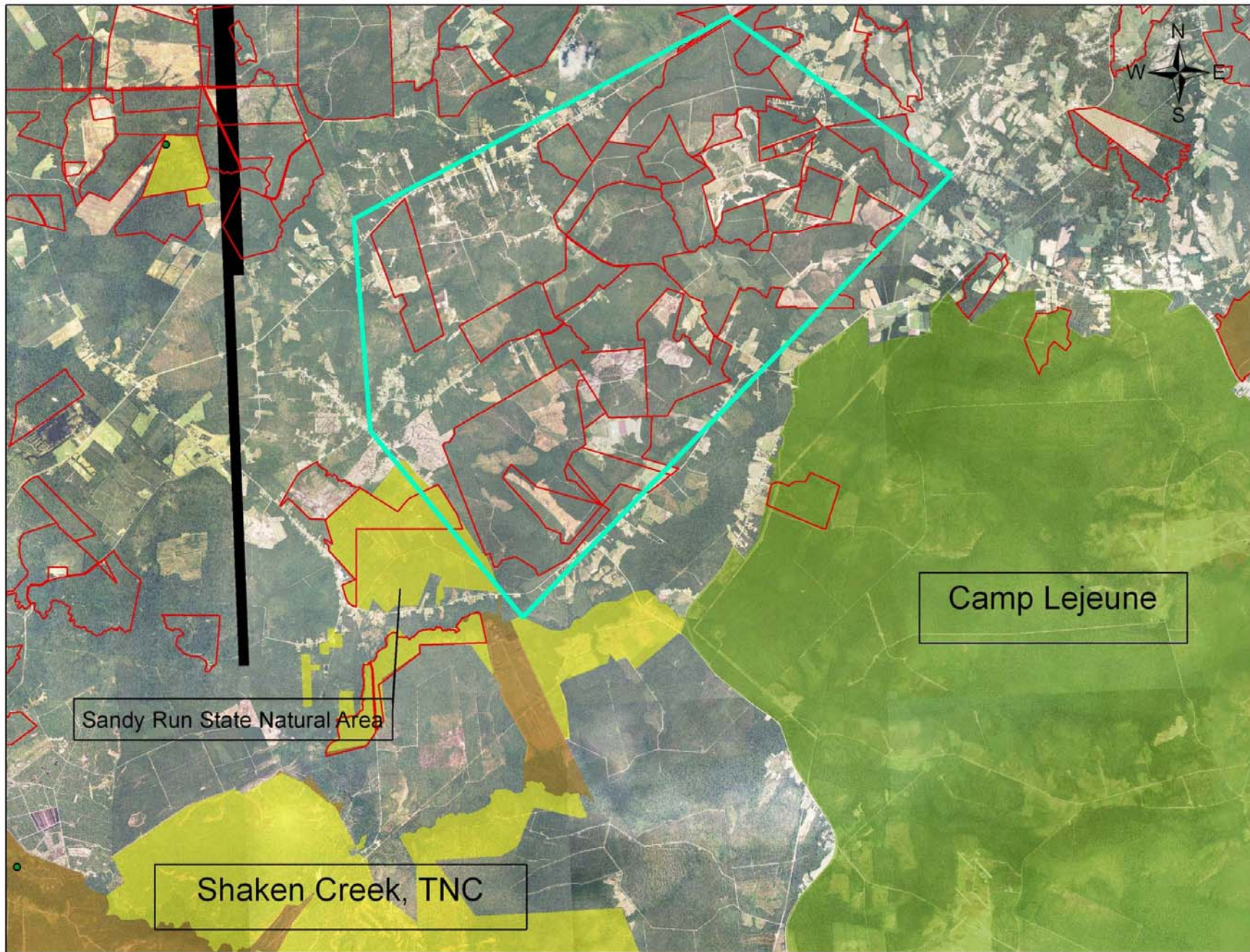
Using parcel data and estimates of pre-settlement coastal pine vegetation types, a shapefile was created that calculated the proportion of each pine community type contained within each parcel

Pine community classes:

- Longleaf pine/wiregrass
- Longleaf pine/mixed pine with occasional hardwoods
- Pond pine woodlands
- Pocosin

Parcels containing 50% or more of pre-settlement longleaf pine community types and are 100+ acres in size





Sandy Run State Natural Area

Shaken Creek, TNC

Camp Lejeune





## RCW Habitat Analysis: Next Steps

Additional searchable fields will be added to the parcel shapefile, including:

- Distance from existing RCW cluster (<0.5mi, 1 mi, 2 mi, 5 mi)
- Total acres of potential pine
- Is the parcel within a designated conservation corridor? Y/N
- Is the parcel adjacent to a managed area? Y/N



## RCW Habitat Analysis: Next Steps

OB partners will provide input as to usefulness of shapefile for identifying parcels containing potential RCW habitat and meeting individual partner's priorities





**William H. Rogers**  
**Environmental Conservation Branch**  
**Marine Corps Base, Camp Lejeune**  
**(910) 451-9384**  
**[william.h.rogers1@usmc.mil](mailto:william.h.rogers1@usmc.mil)**