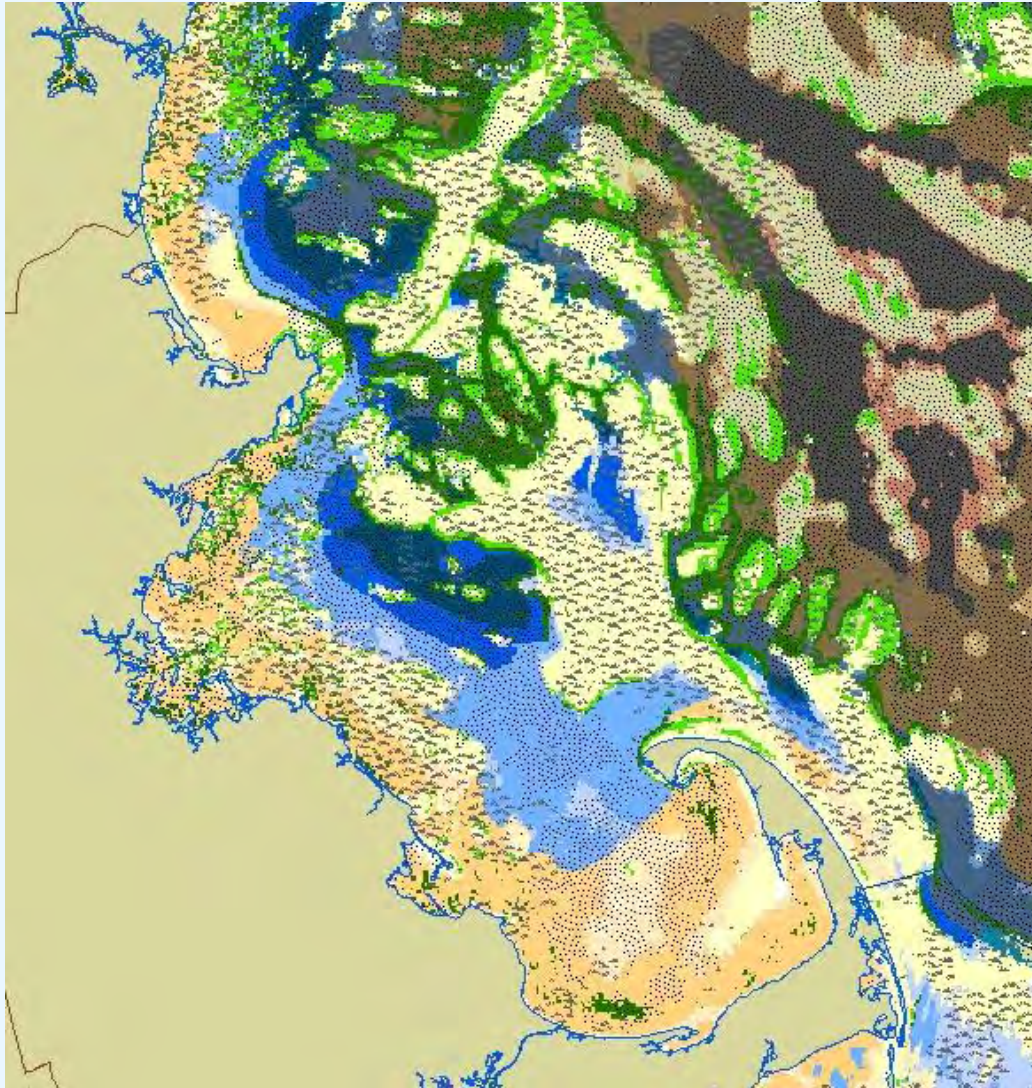


Seafloor: Identifying the best examples

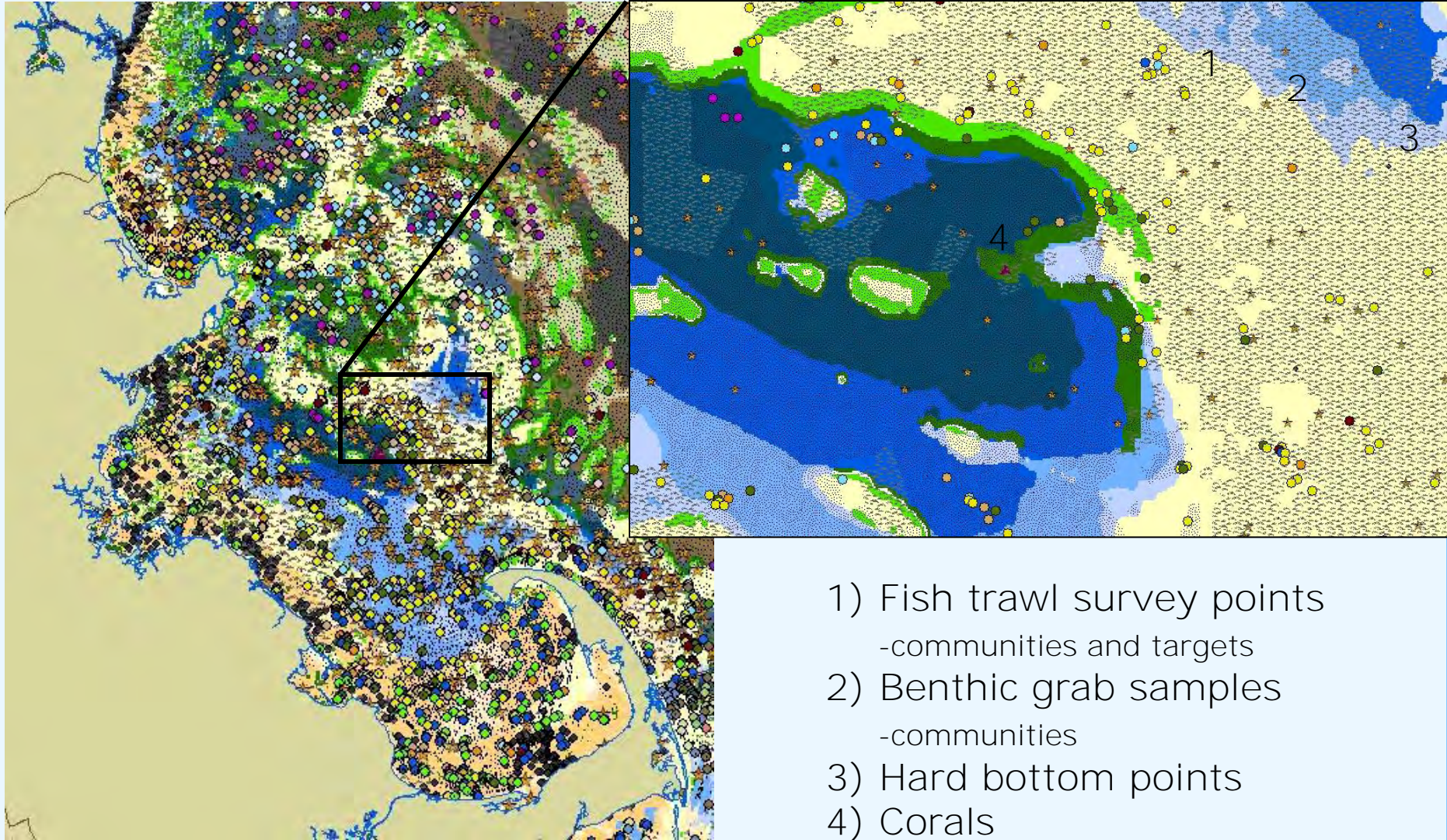


How do we measure the impact of a feature on marine diversity?

What biota does it contain?

Is this a good place for the species and communities?

Seafloor: Corroborating points



- 1) Fish trawl survey points
-communities and targets
- 2) Benthic grab samples
-communities
- 3) Hard bottom points
- 4) Corals



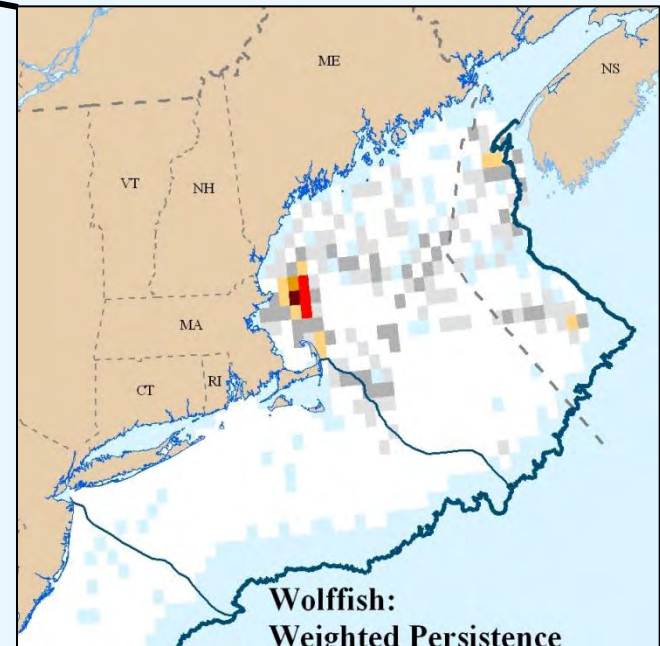
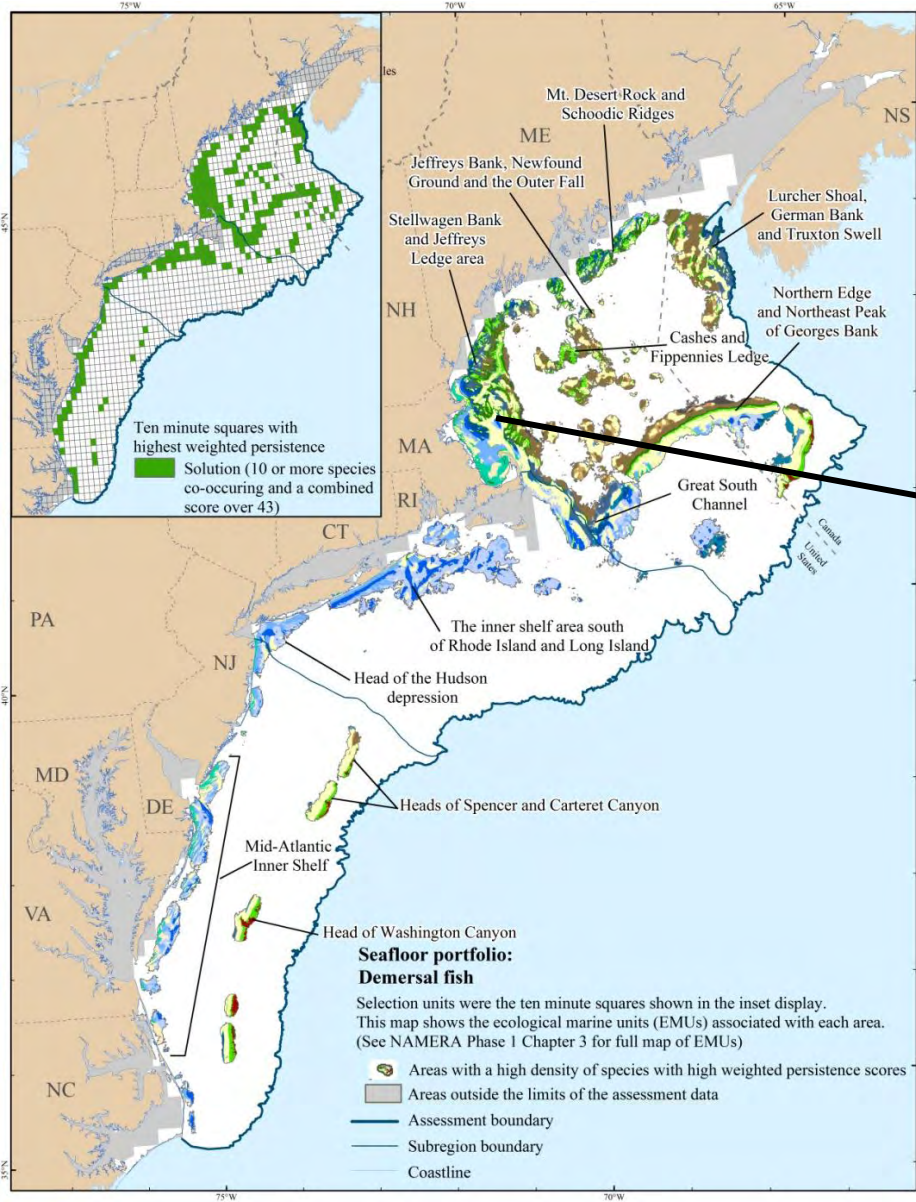
Seafloor: Six Criteria

- Persistence of demersal fish species
- Diverse demersal fish communities
- Corals and canyons
- Hard bottoms
- Seagrass
- Benthic habitats



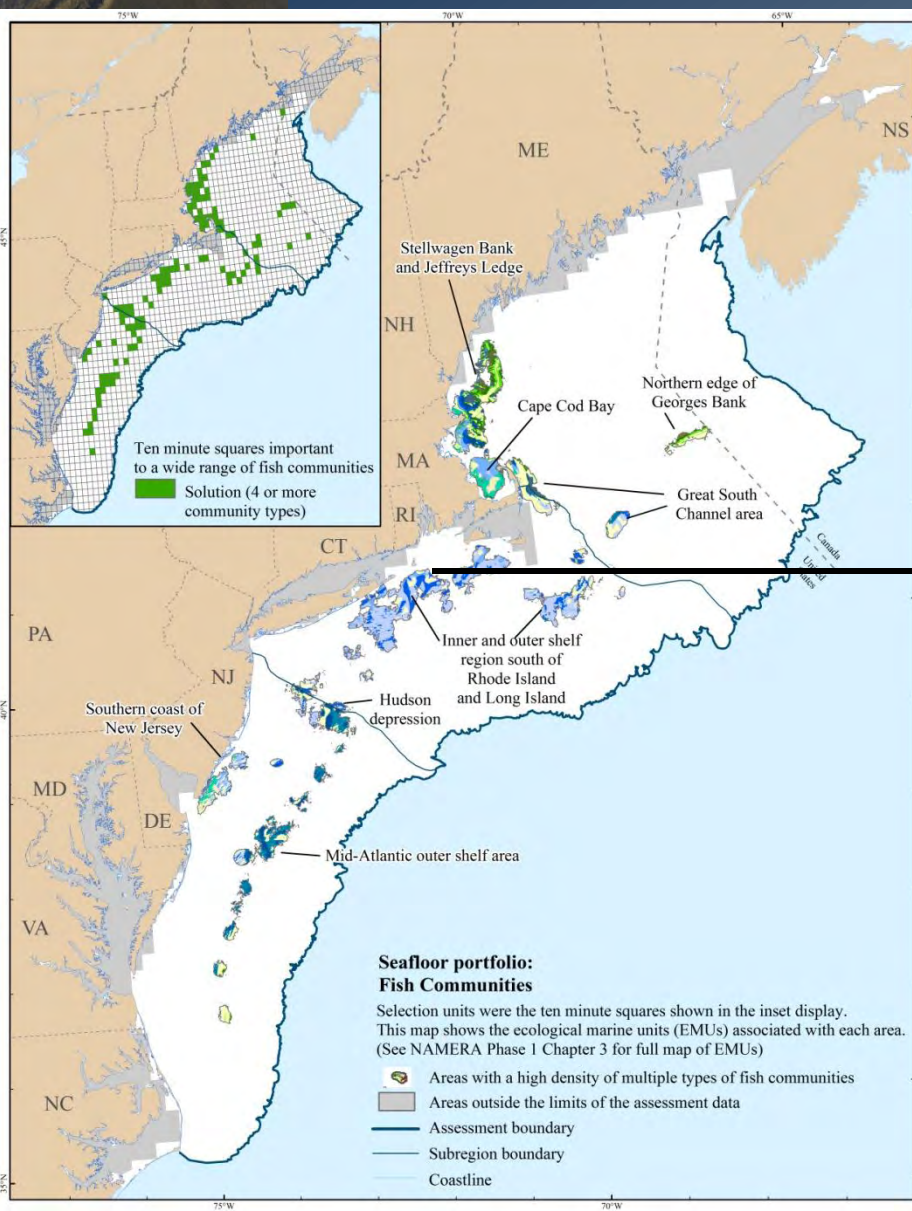
Seafloor: Demersal fishes (32 species)

- Each target species has been consistently found in the square for 3 to 4 decades
- At least 10 species

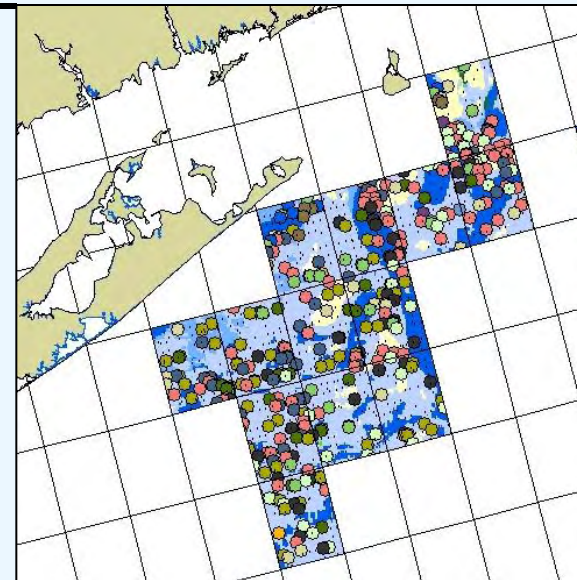




Seafloor: Bottom-dwelling Fish Communities

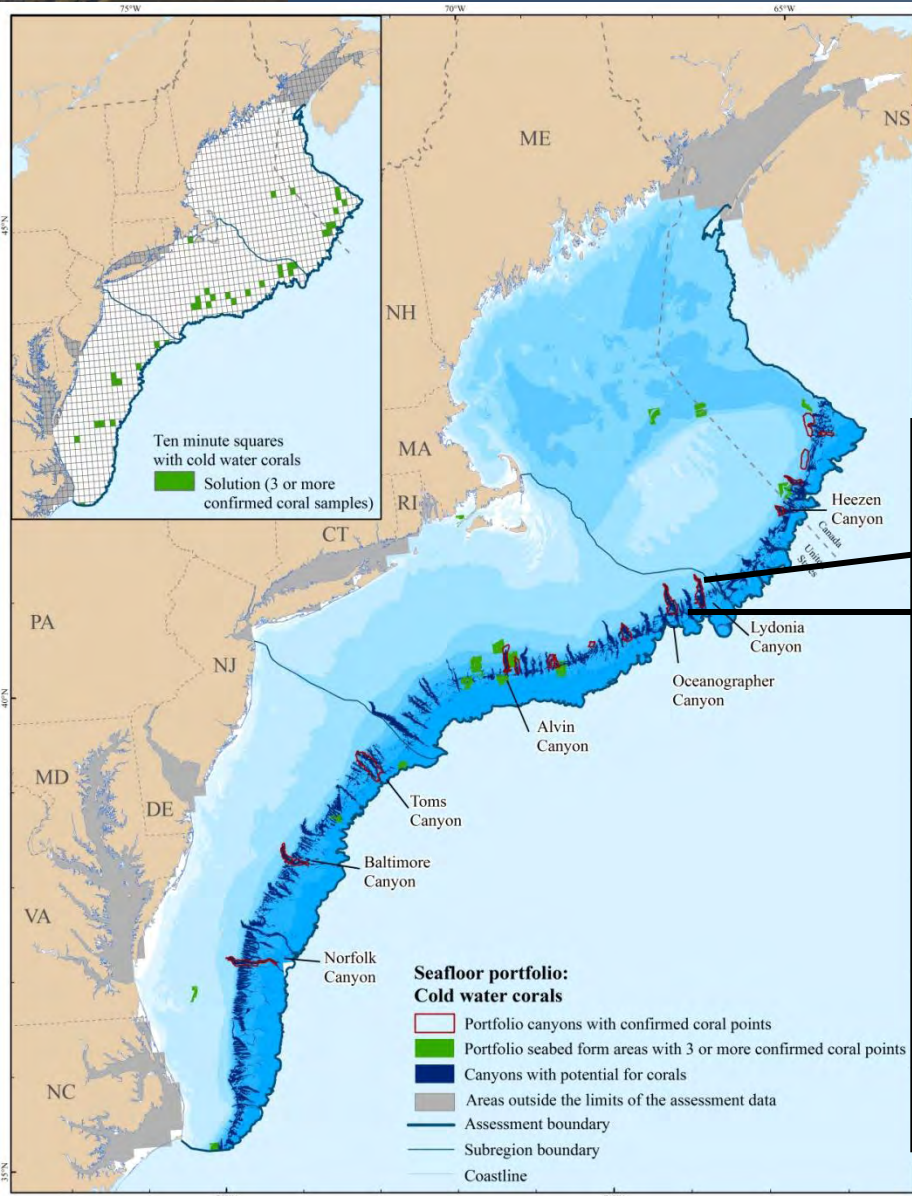


- 3 to 5 years of samples (depauperate examples excluded*)
- Over 4 fish communities in the square

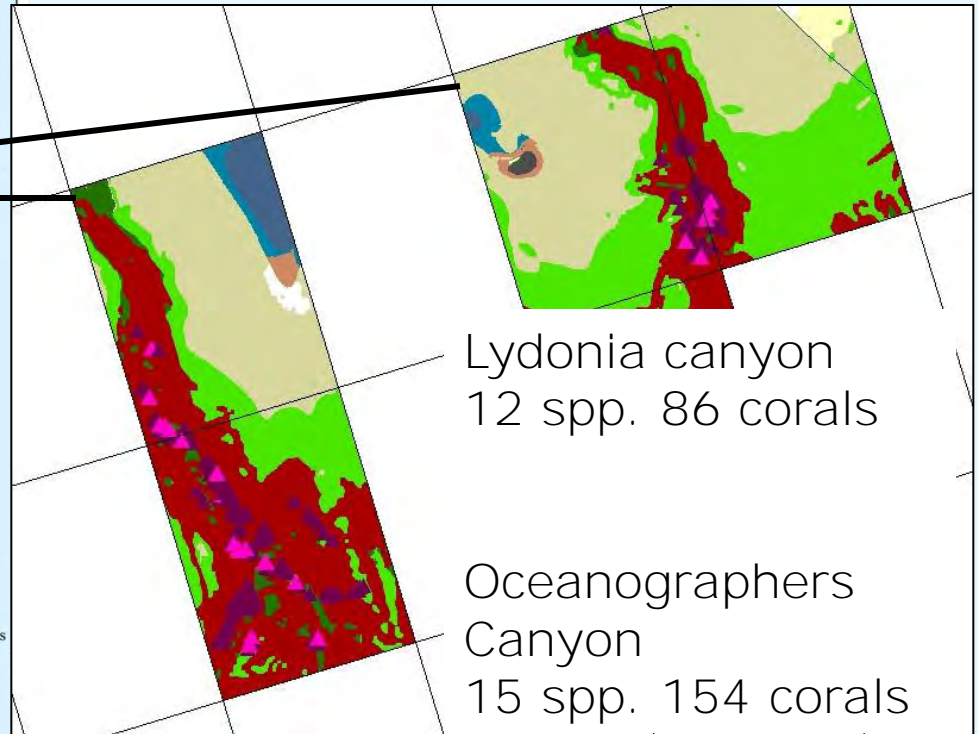


* relative to the community type

Seafloor: Corals and Canyons

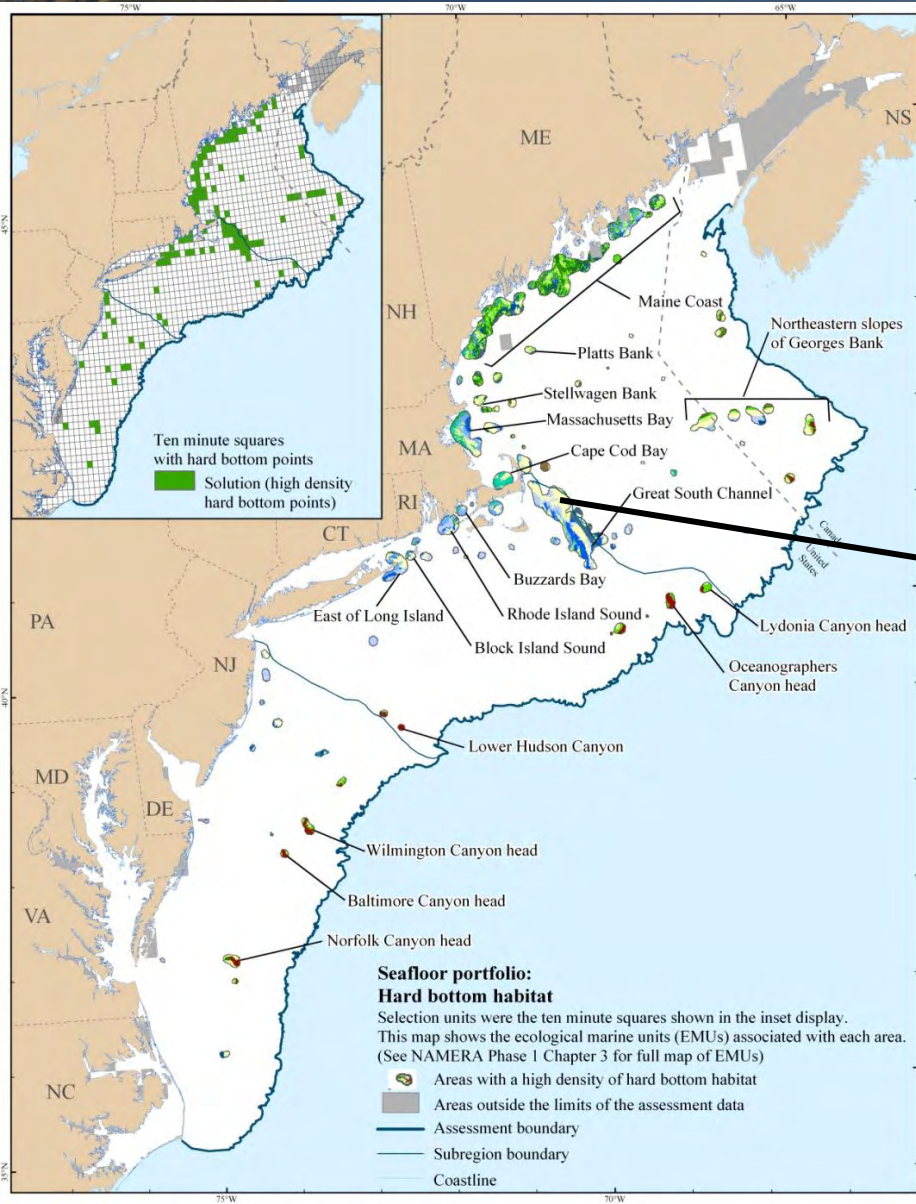


- Over 3 confirmed corals
- Multiple species a plus

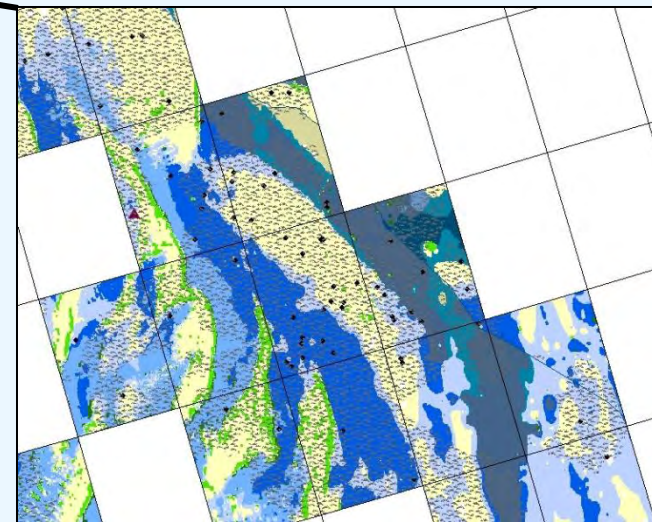




Seafloor: Hard Bottoms (fine-scale structure)



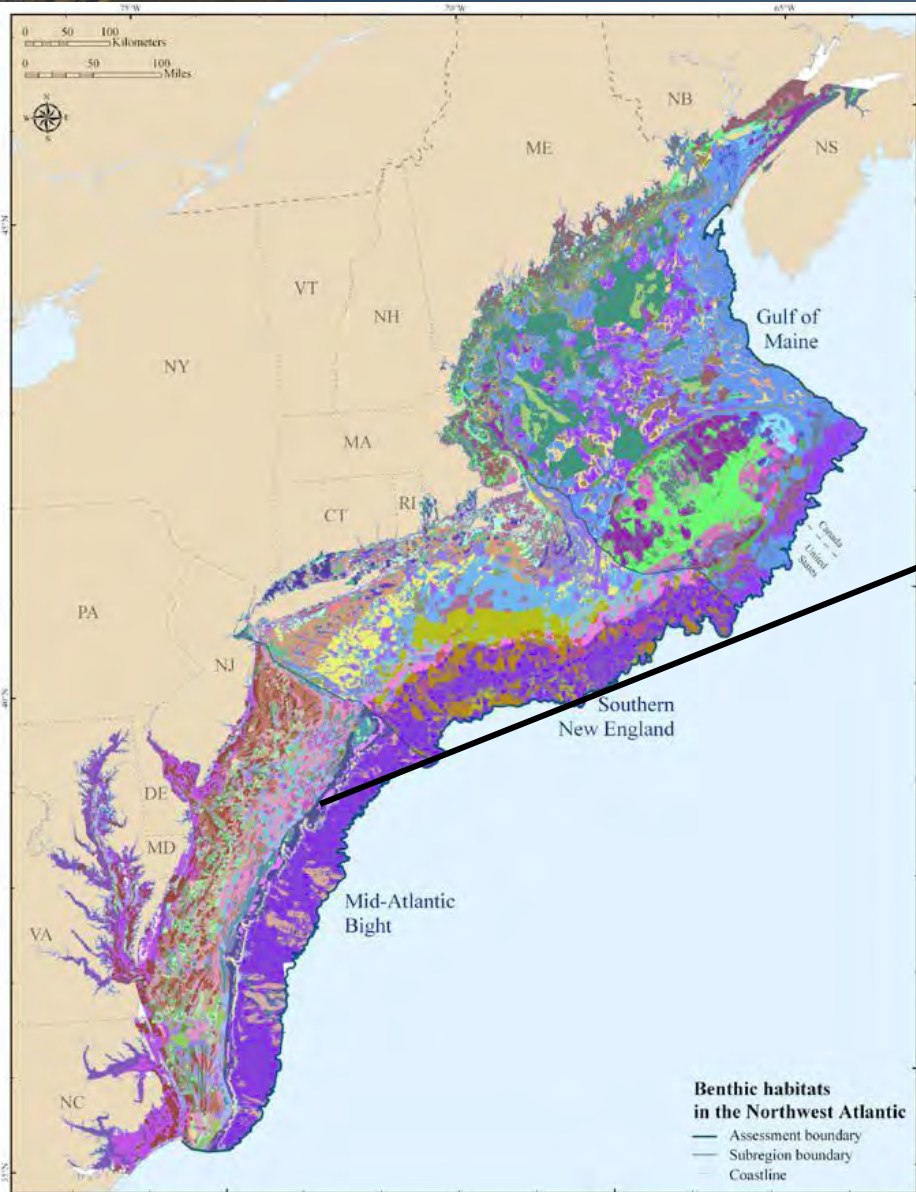
- High densities of hard bottom points
- Reflects ecological differences



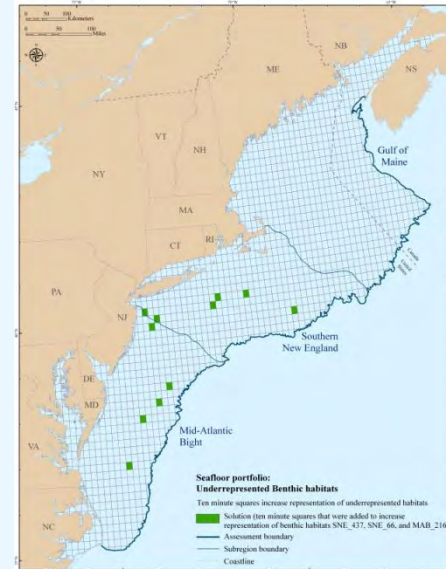
Southeast channel



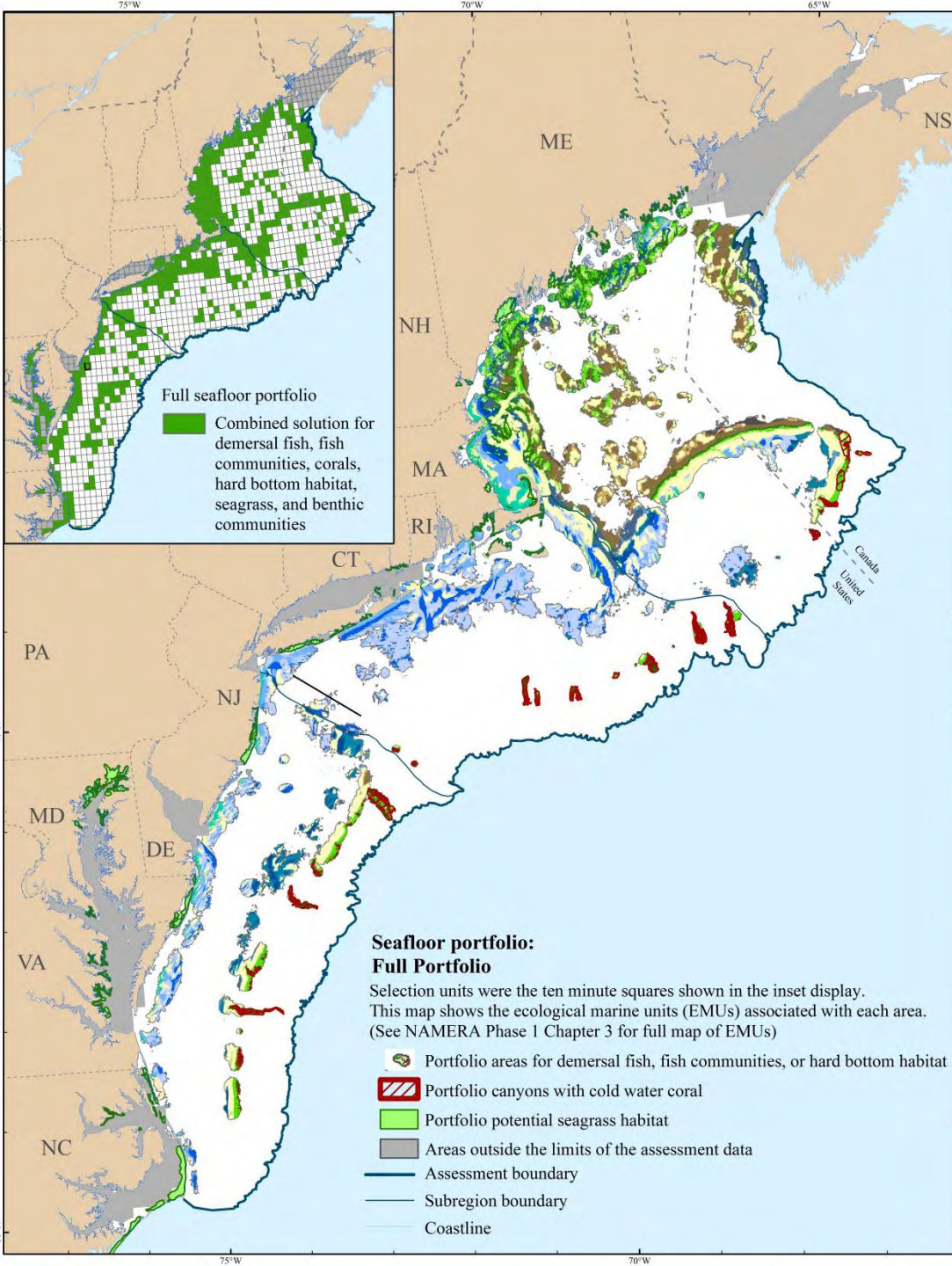
Seafloor: Benthic Communities



- Under-represented habitats. < 10%
- MAB_216 (high slopes in deep water)



Seafloor Portfolio: Key areas for Benthic Diversity



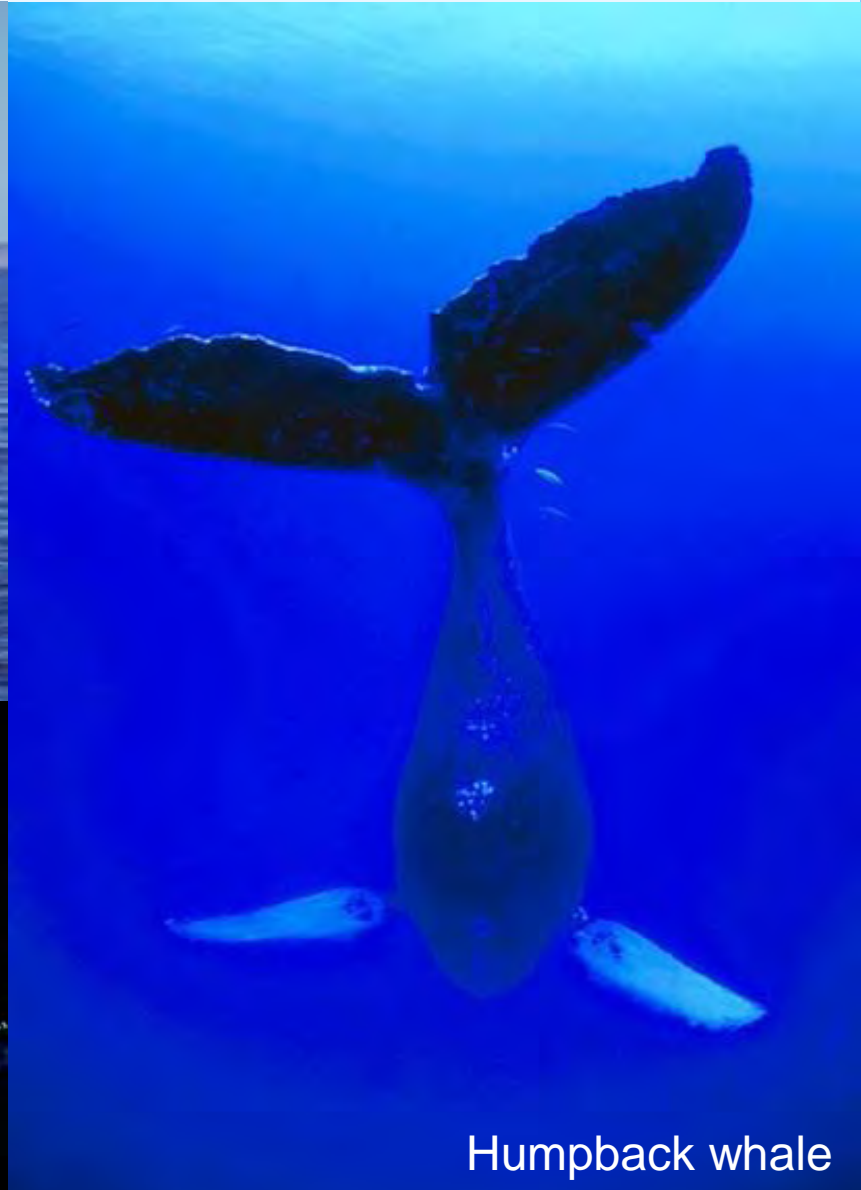
- Grand Manan Bank
- Mass Bay/Stellwagen
- Southeast Channel
- Western Georges Bank
- RI Sound, Nantucket Shoals
- Coxes Ledge area
- Hudson Canyon
- Coast from Long Island to Pamlico
- Shelf/slope break



Migratory Theme



Right whale



Humpback whale



Bottlenose dolphin

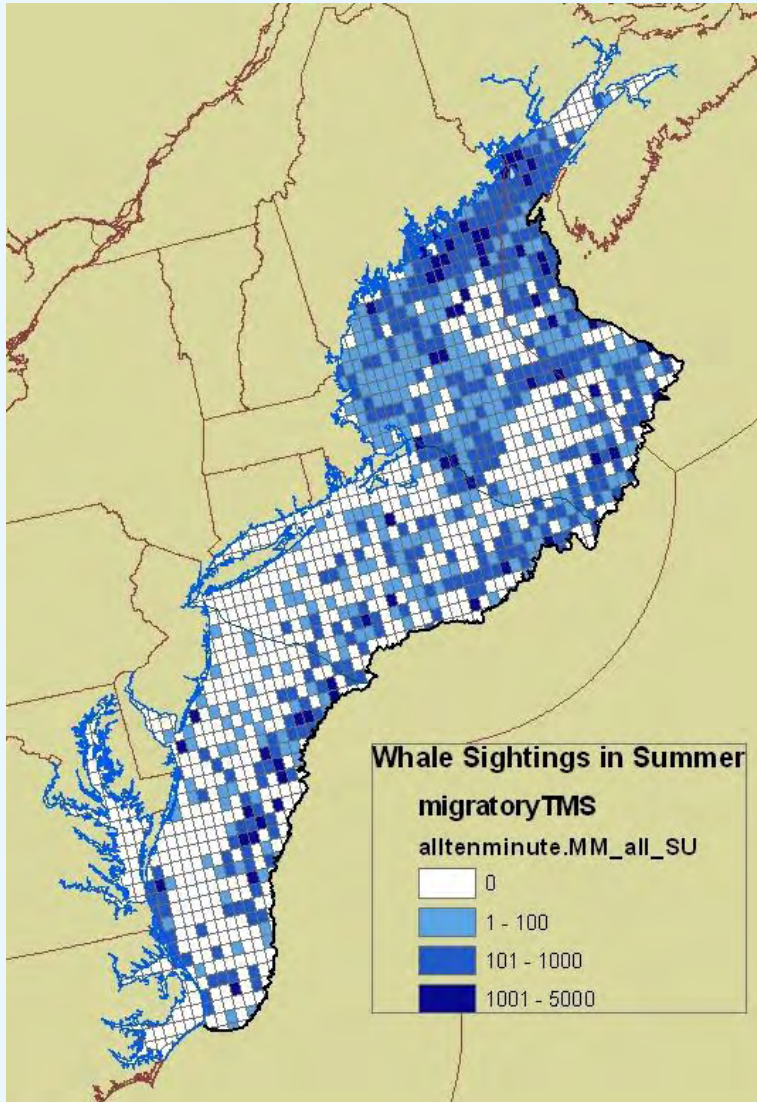


Migratory Species: Six Criteria

- Baleen Whales and Northern Dolphins
- Toothed Whales
- Large Pelagic Fish
- Sea Turtles
- Small Pelagic (forage) Fish*

* Used only indirectly

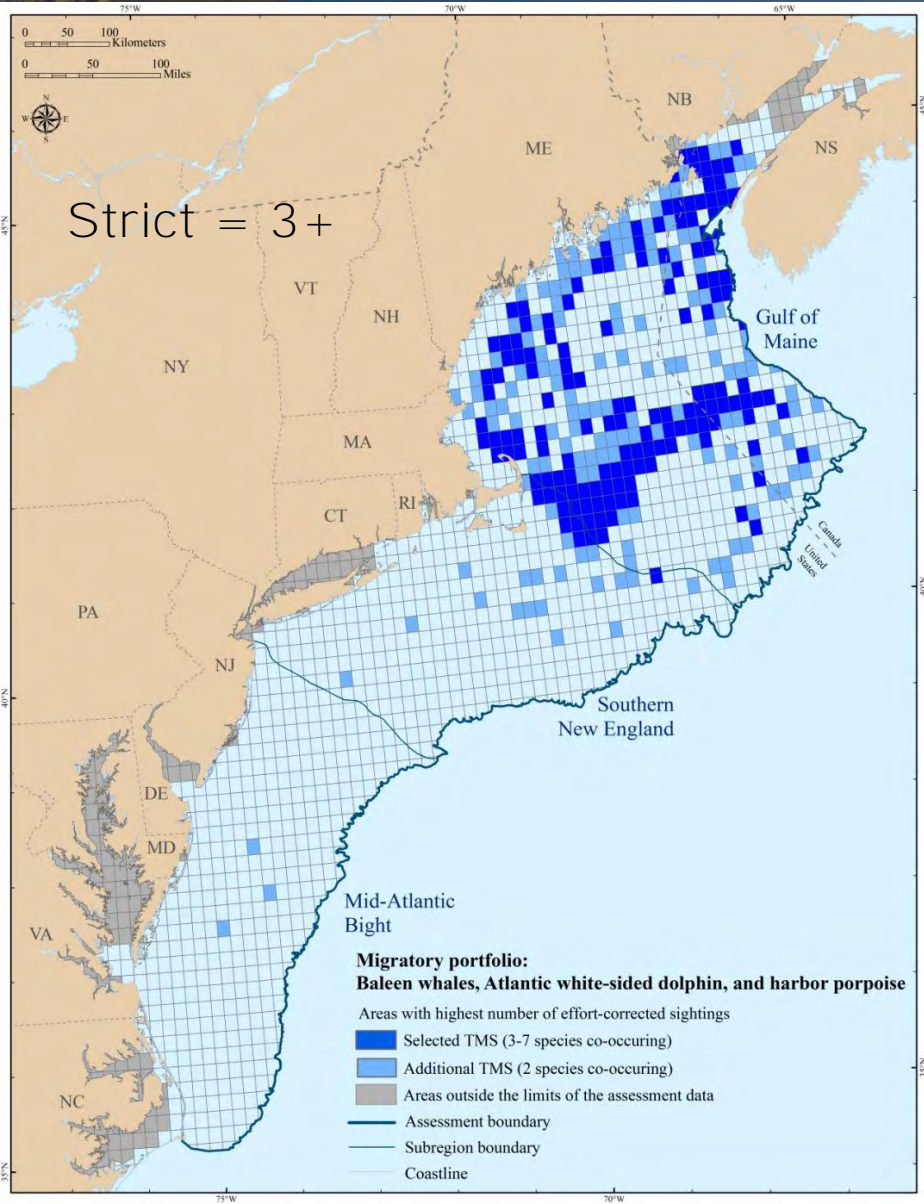
Marine Mammals



- 17 Species of whales and dolphins
- Based on 30+ years of sightings data corrected for effort
- How do you pare this down to the key areas?



Baleen Whales and N. Dolphins: 14 Species



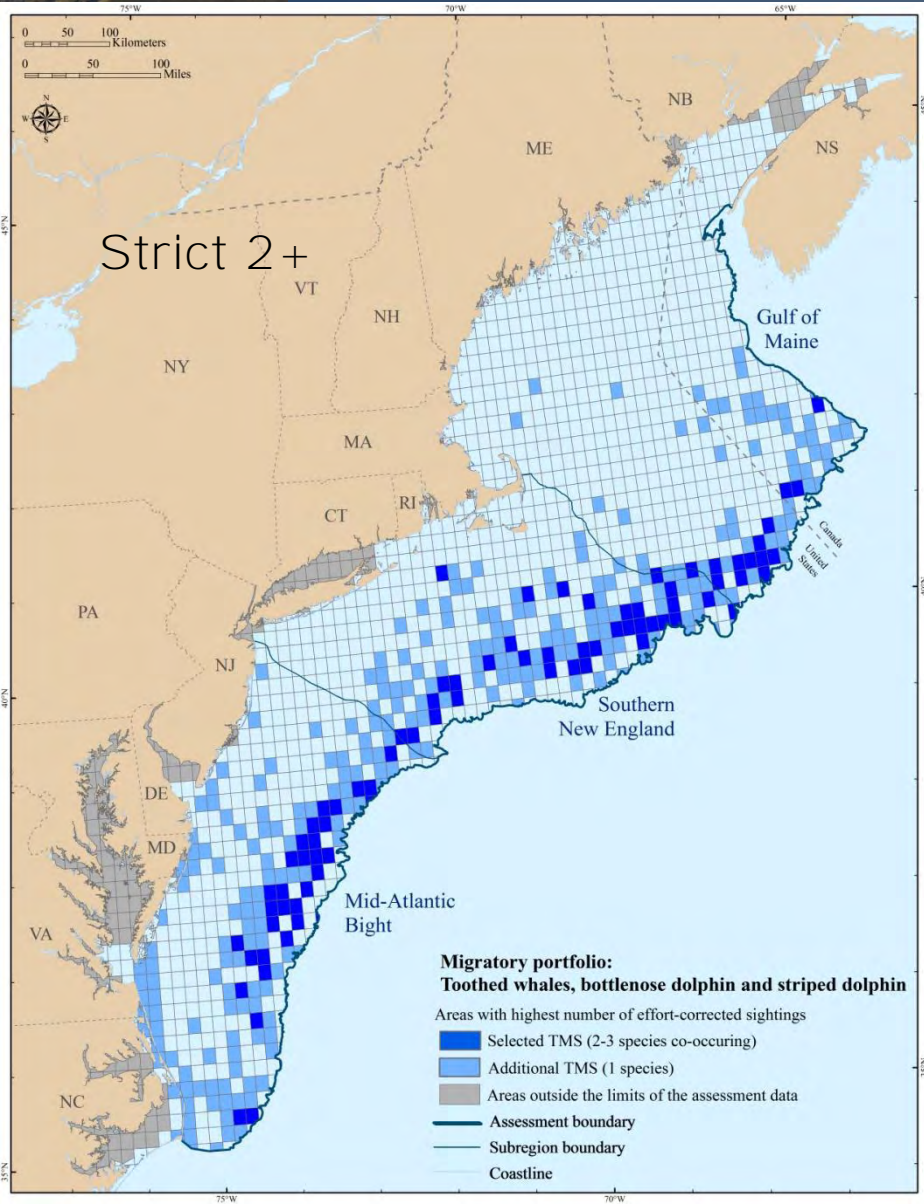
Number of observations way above average (>2.5 Std)

- Humpback whale
- Minke whale
- North Atlantic Right whale
- Sei whale
- Fin whale
- Atlantic white-sided dolphin
- Harbor porpoise





Toothed Whales and Dolphins: 3 Species



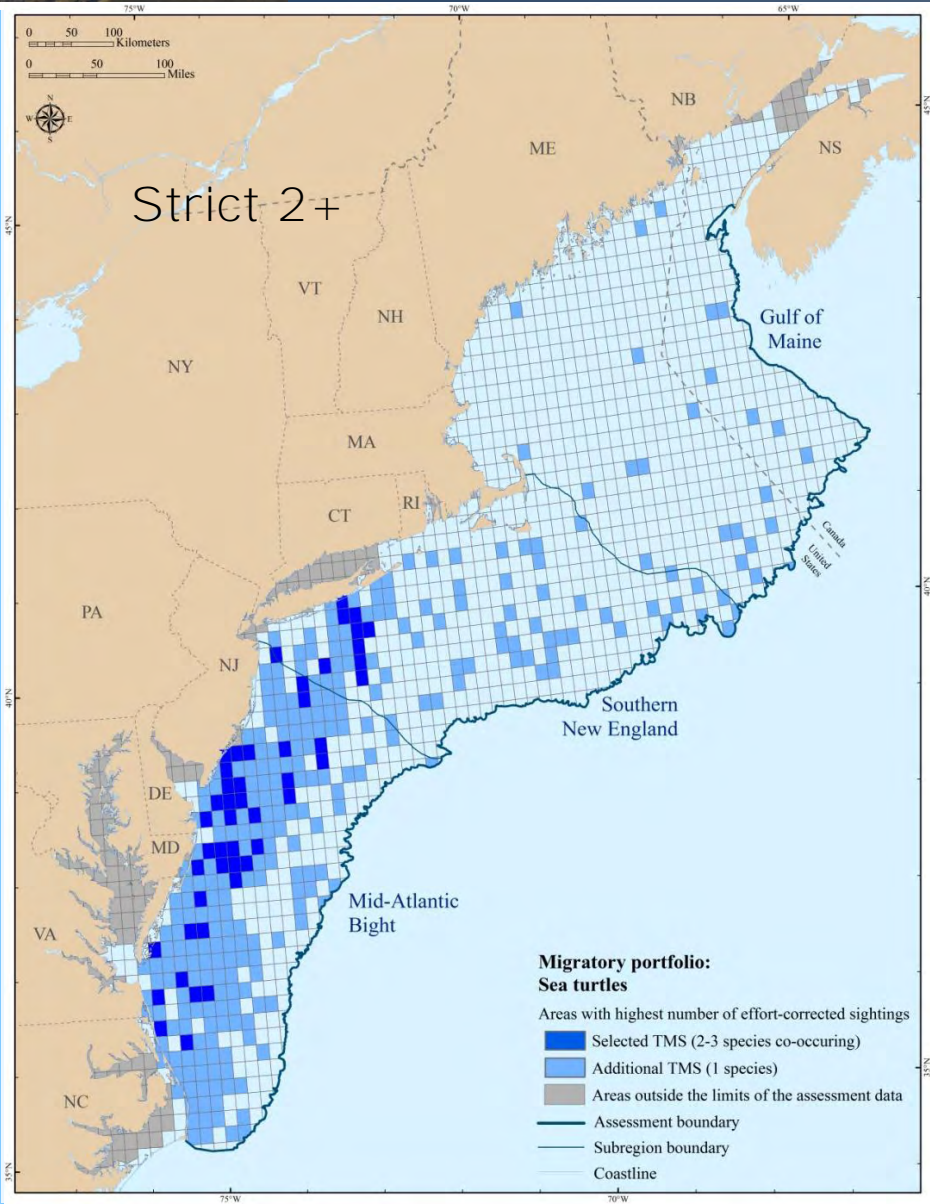
Number of observations way above average (>2.5 Std)

- Sperm Whale
- Bottlenose Dolphin
- Striped Dolphin





Sea Turtles: 3 Species



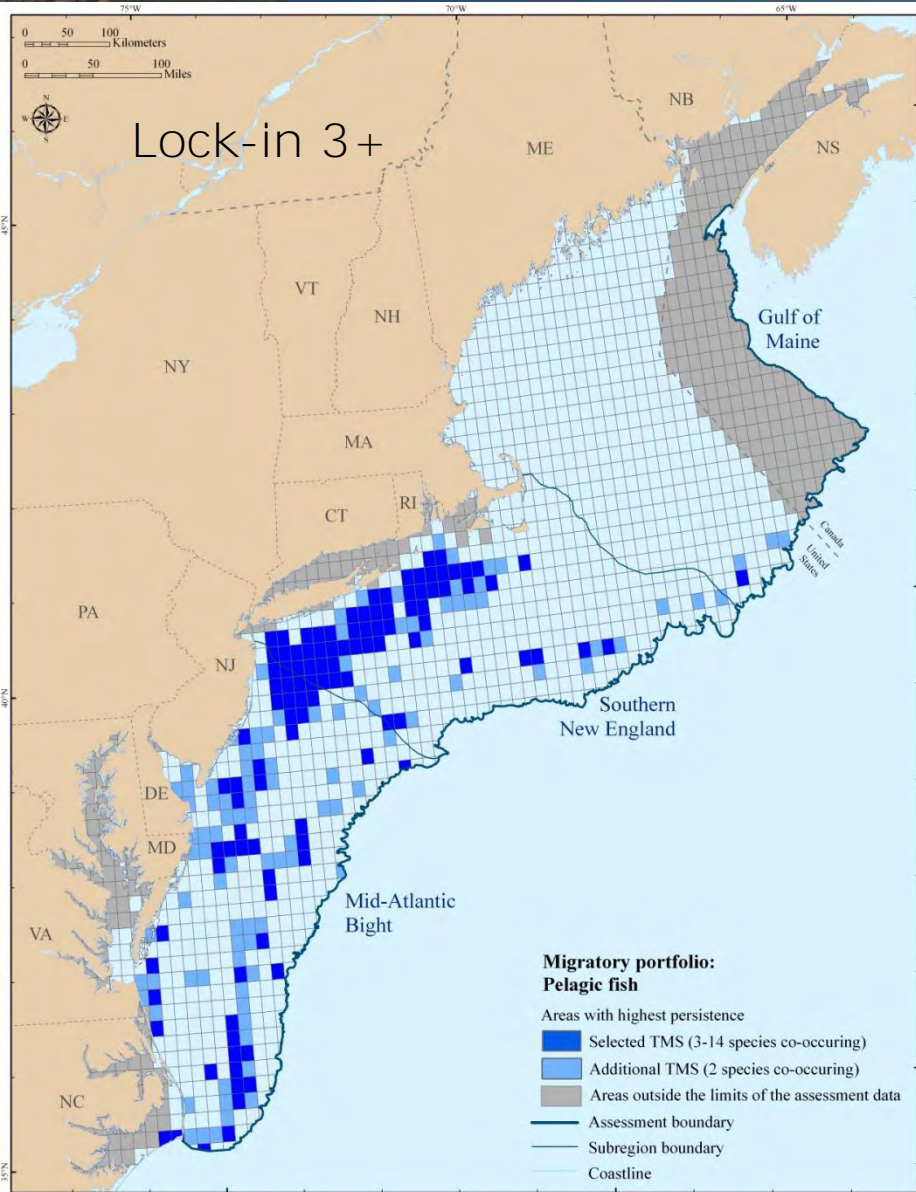
Observations 2 SD above the mean

- Green sea turtles
- Leatherback turtle
- Loggerhead turtle





Large Pelagics: 14 Species



Persistence across 3 or 4 decades

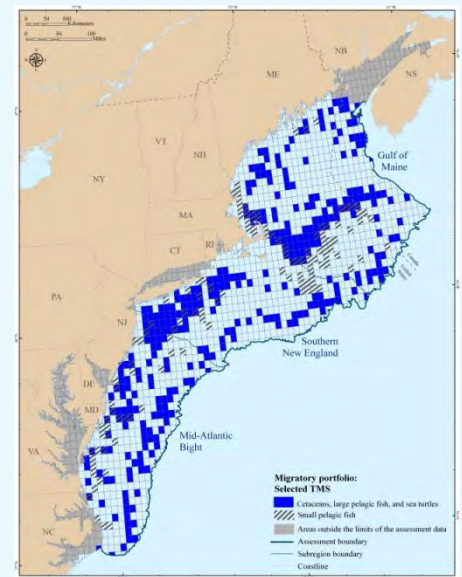
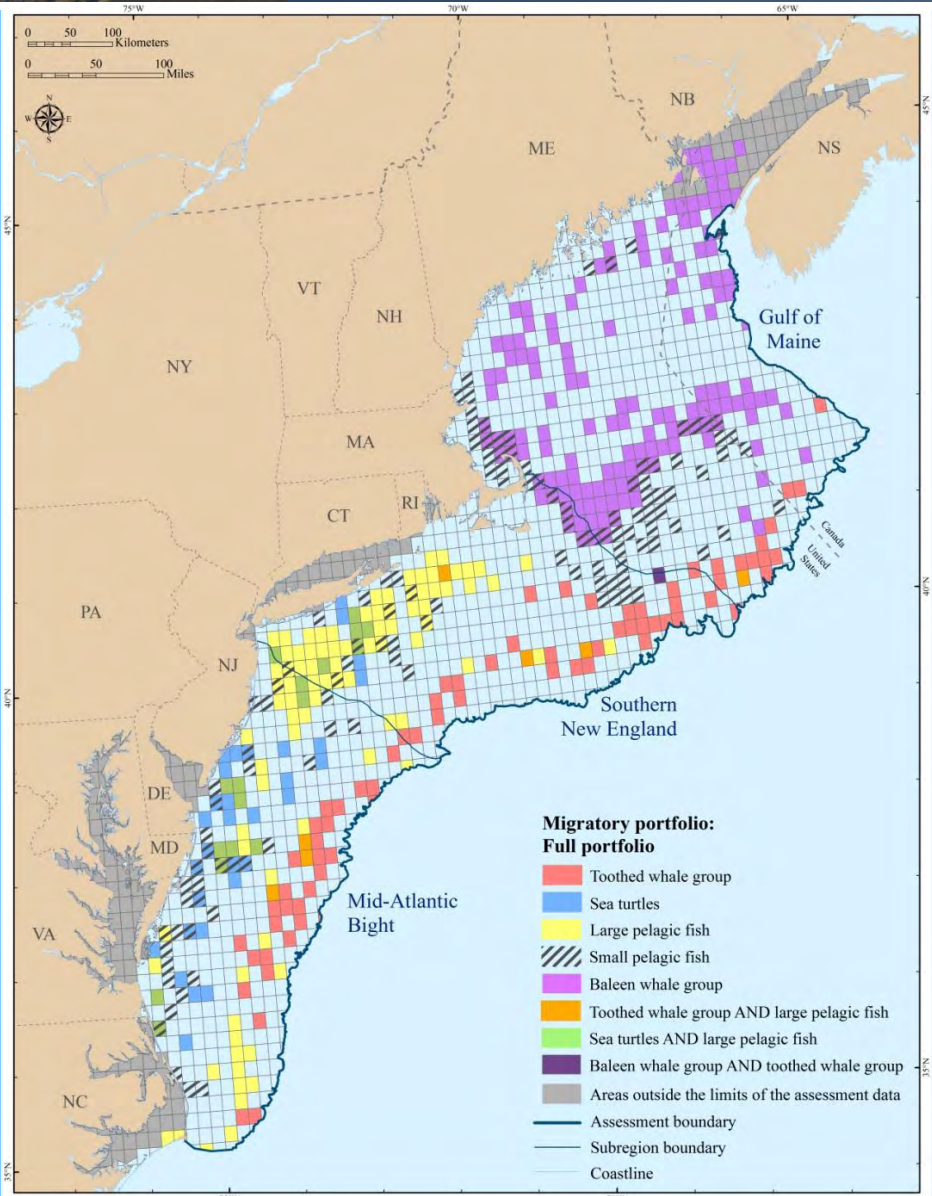
- Albacore Tuna
- Blue Marlin
- Dusky shark
- Porbeagle
- Sandtiger
- Swordfish
- White Marlin
- Bigeye Thresher
- Bluefin Tuna
- Great Hammerhead*
- Sandbar shark
- Shortfin Mako
- Thresher
- Scalloped Hammerhead





All Highly Migratory Species

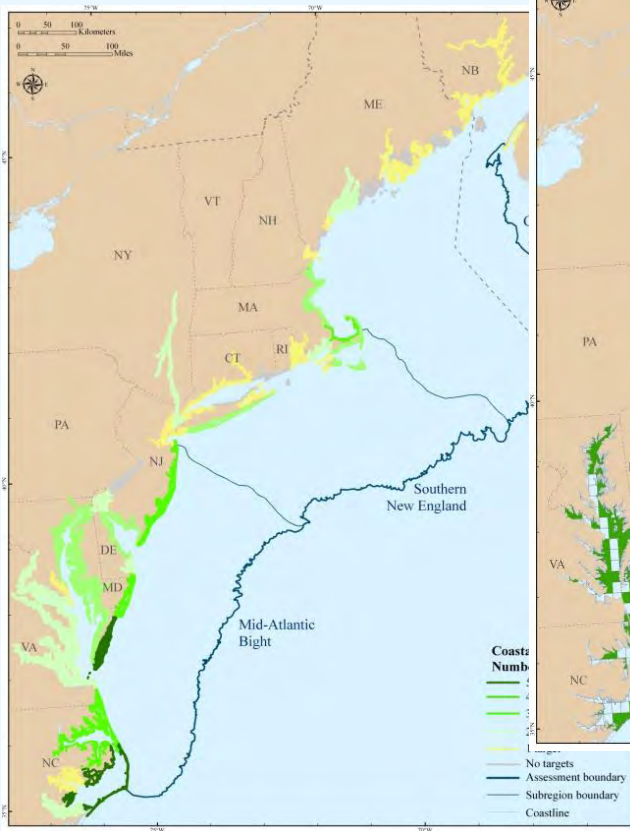
- Large Pelagics
- Baleen Whales
- Toothed Whales
- Sea Turtles
- Small Pelagics



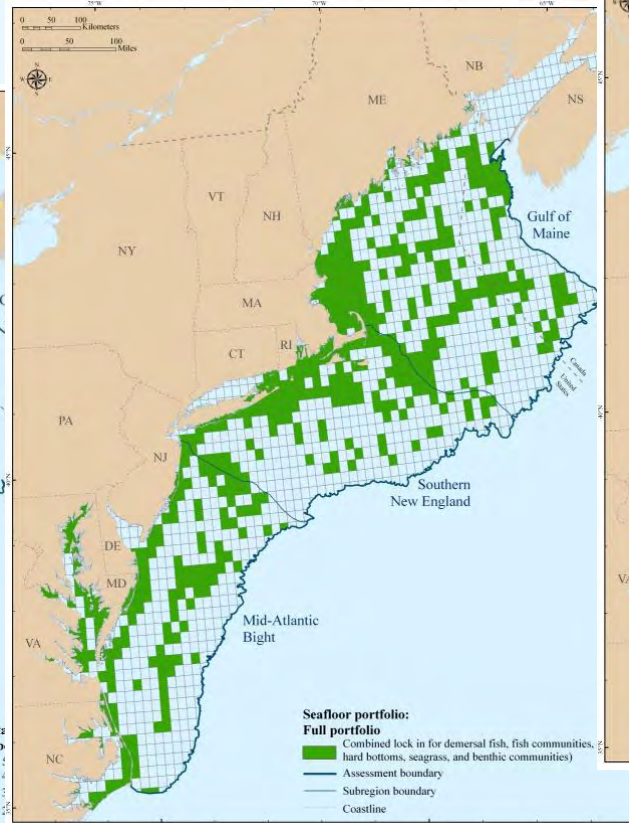


Integration

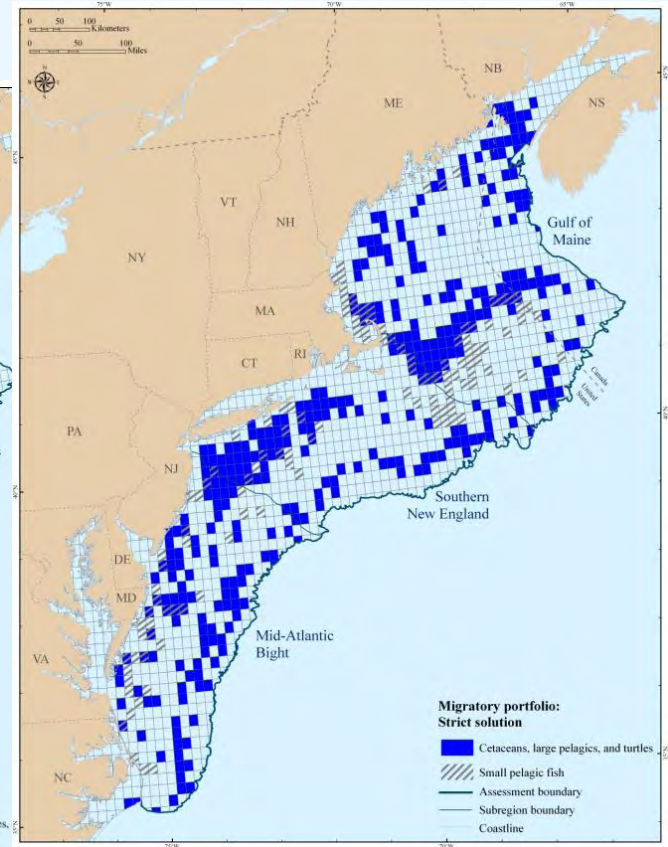
Coastal



Seafloor

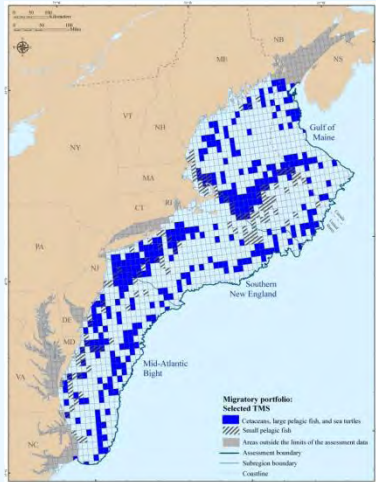


Migratory





Integrated Portfolio

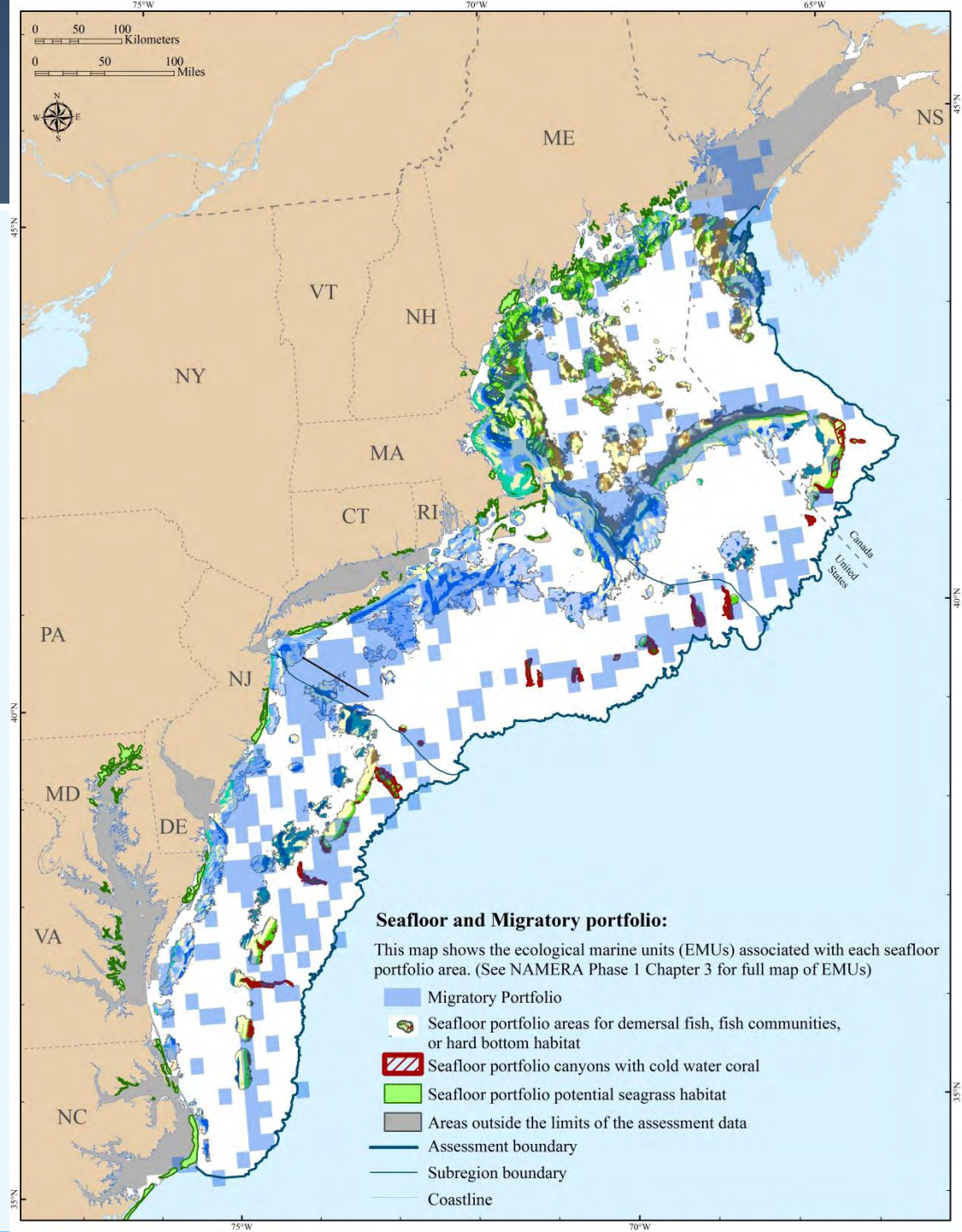


Migratory

+

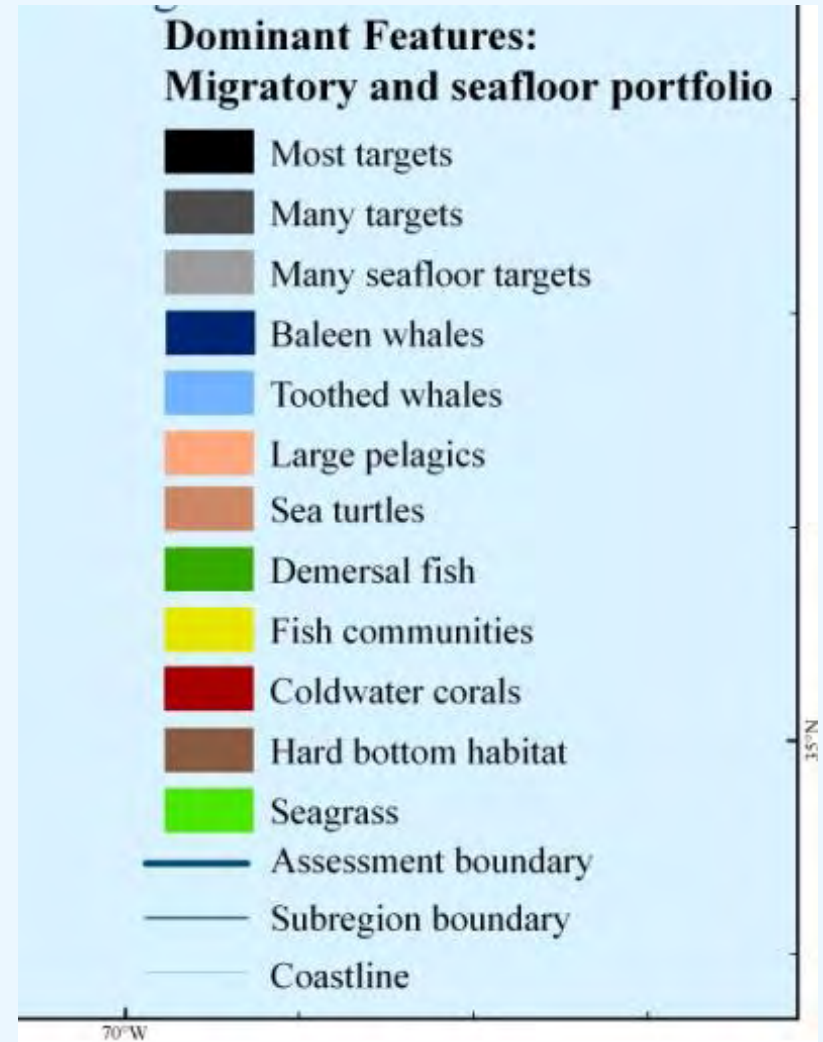
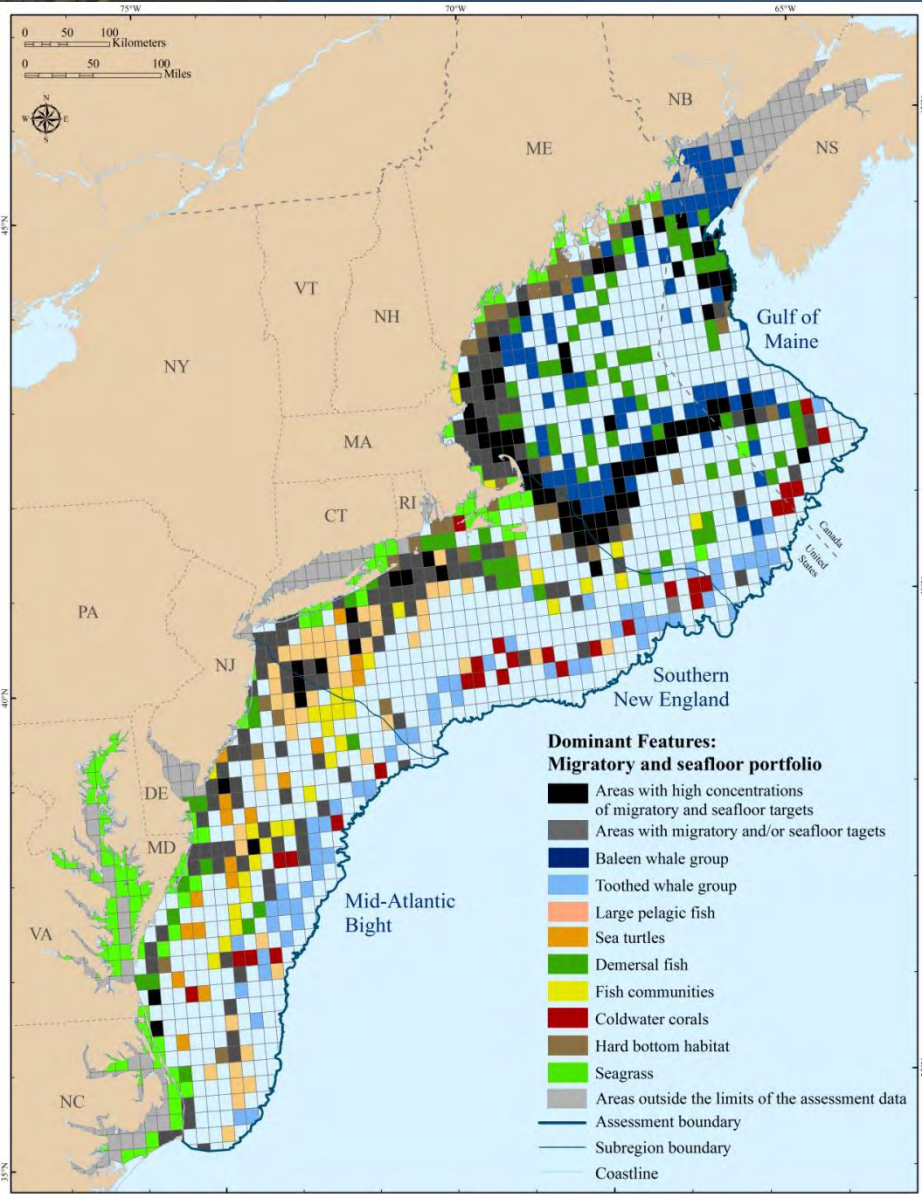


Seafloor





Seafloor + Migratory Portfolio





Integrated Portfolio



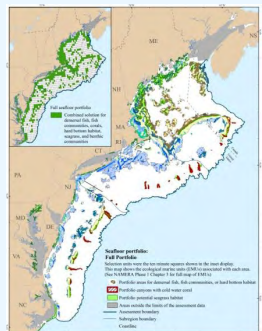
Coastal

+

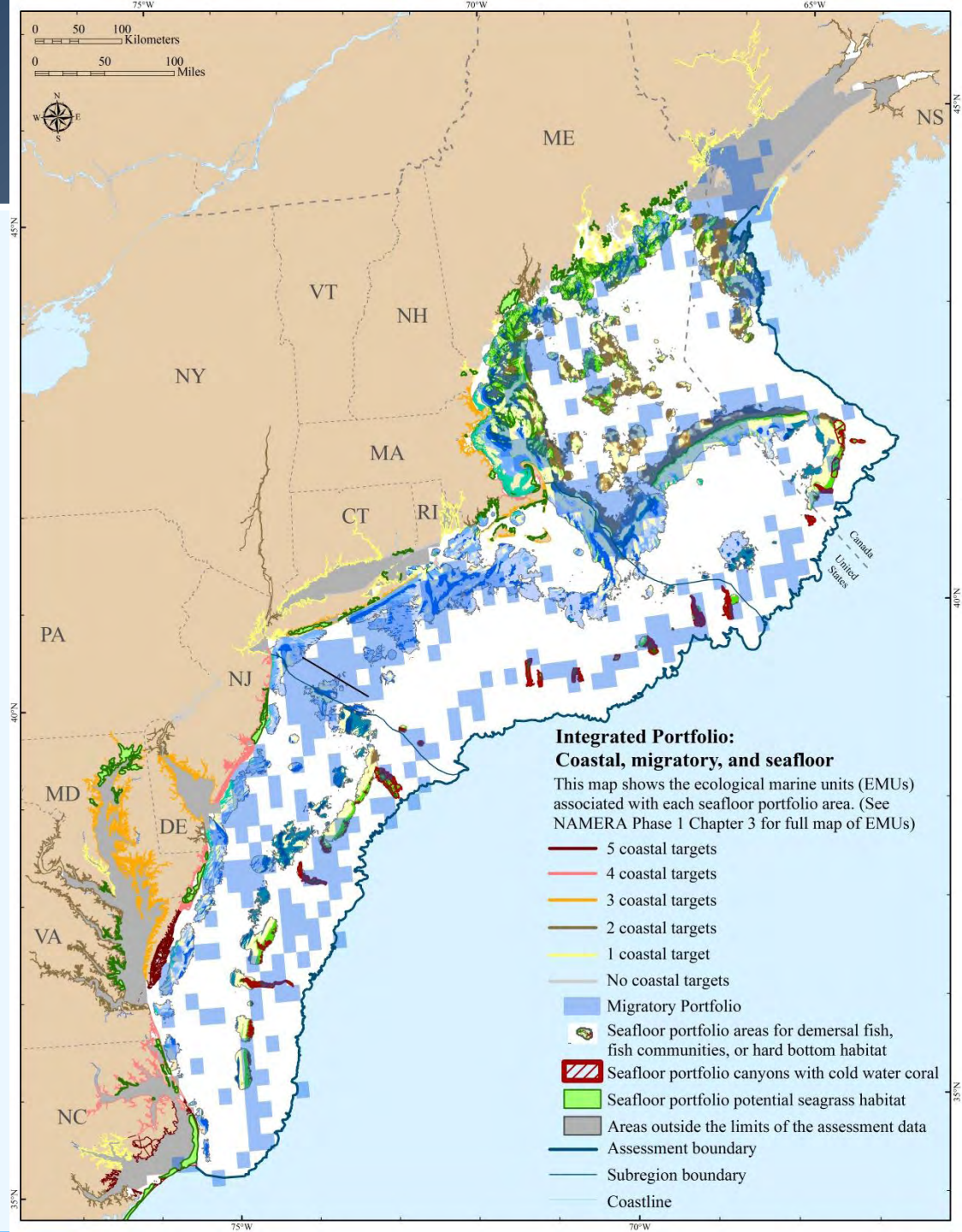


Migratory

+

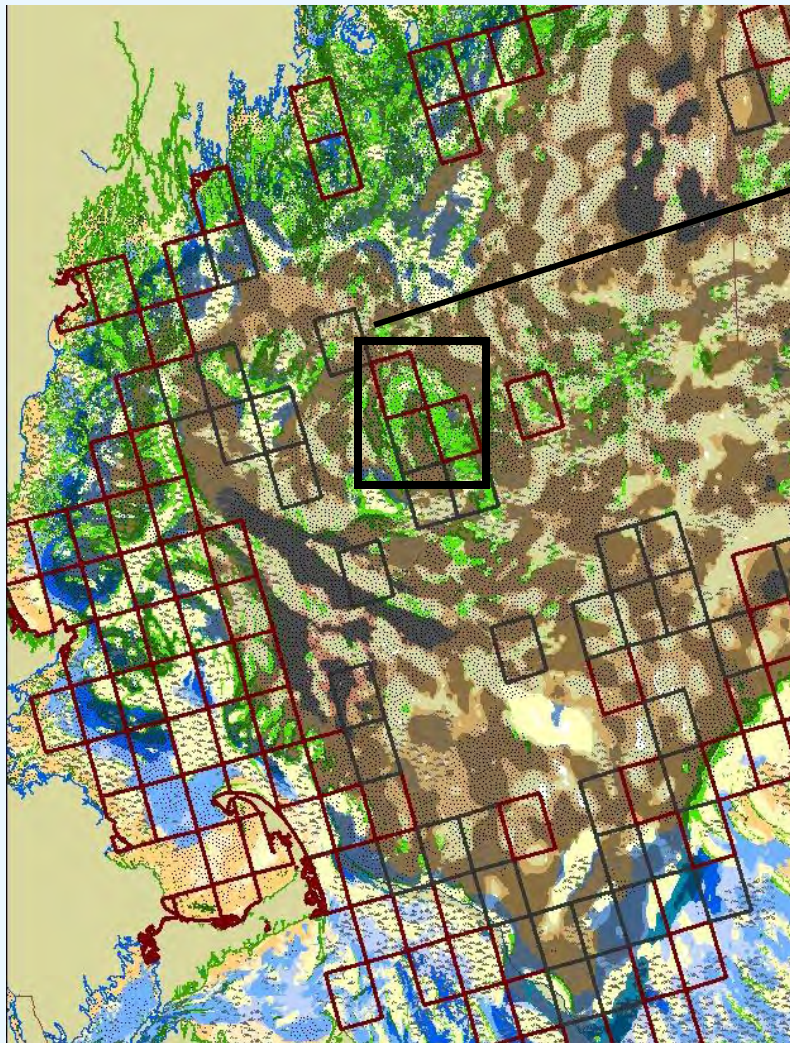


Seafloor

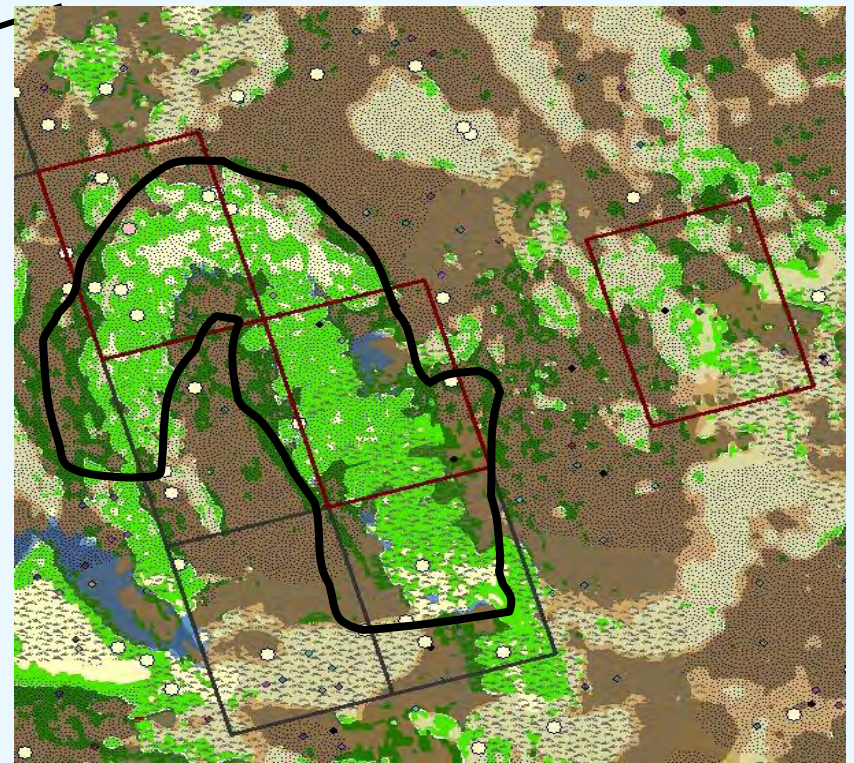




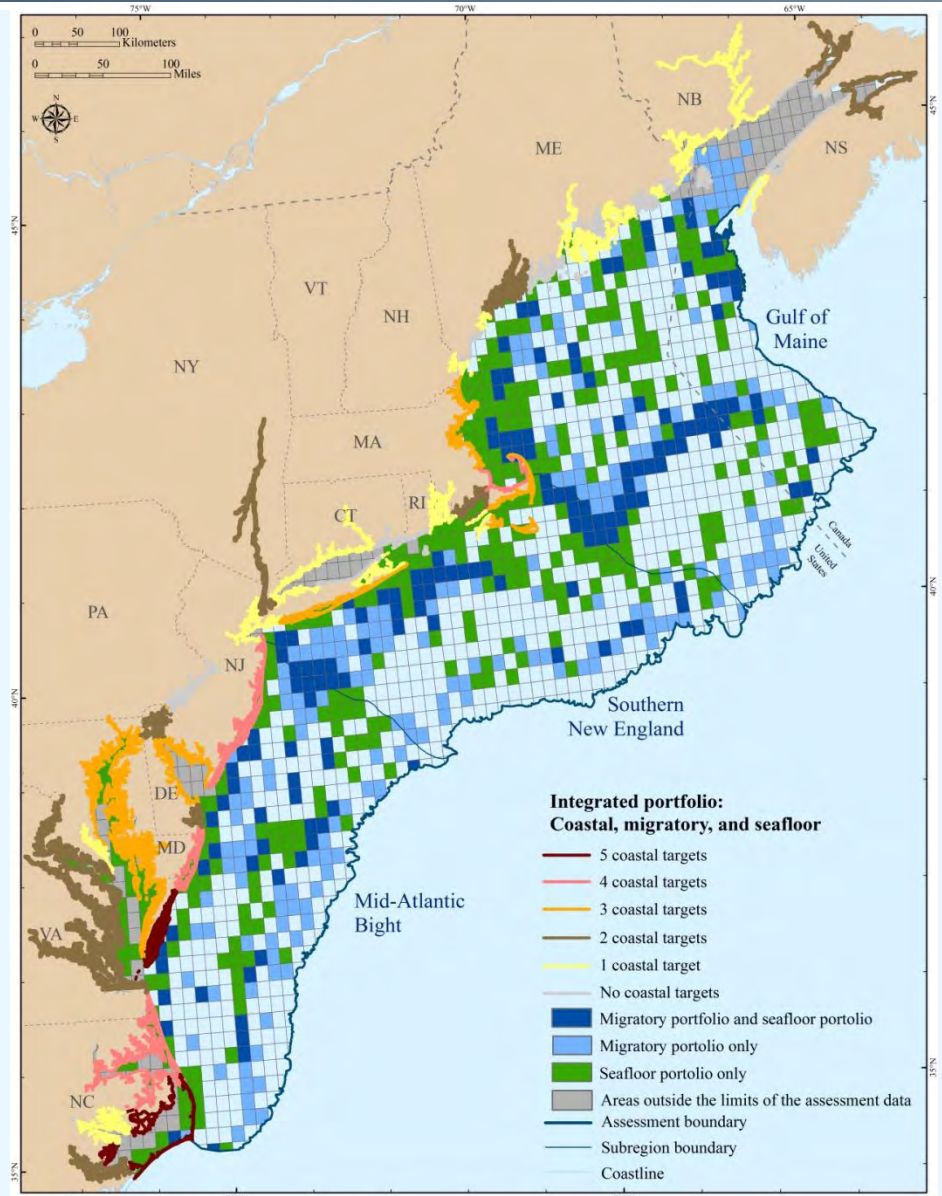
Next Steps: Example for Gulf of Maine



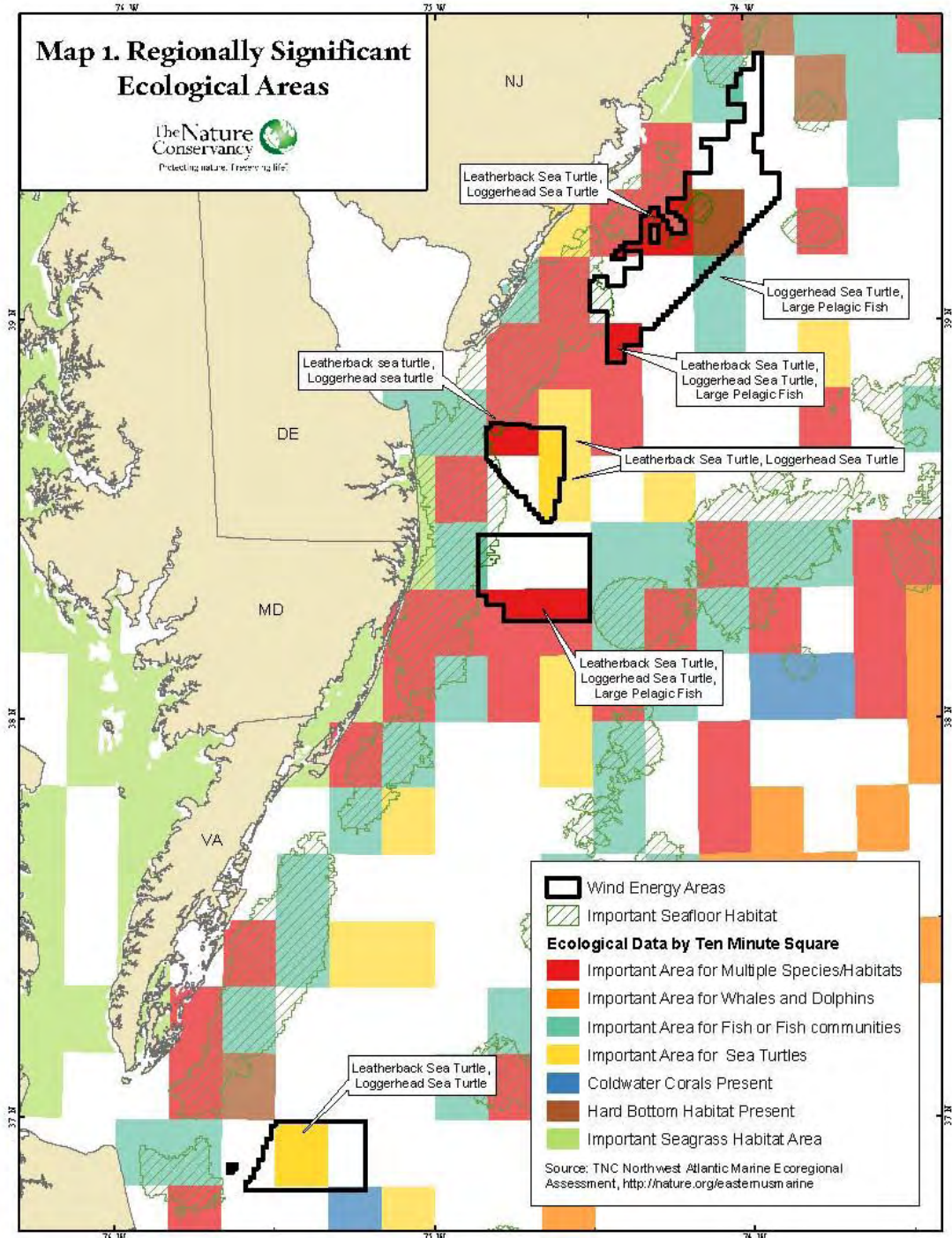
Site design: Cashes Ledge



Integrated Portfolio



Map 1. Regionally Significant Ecological Areas



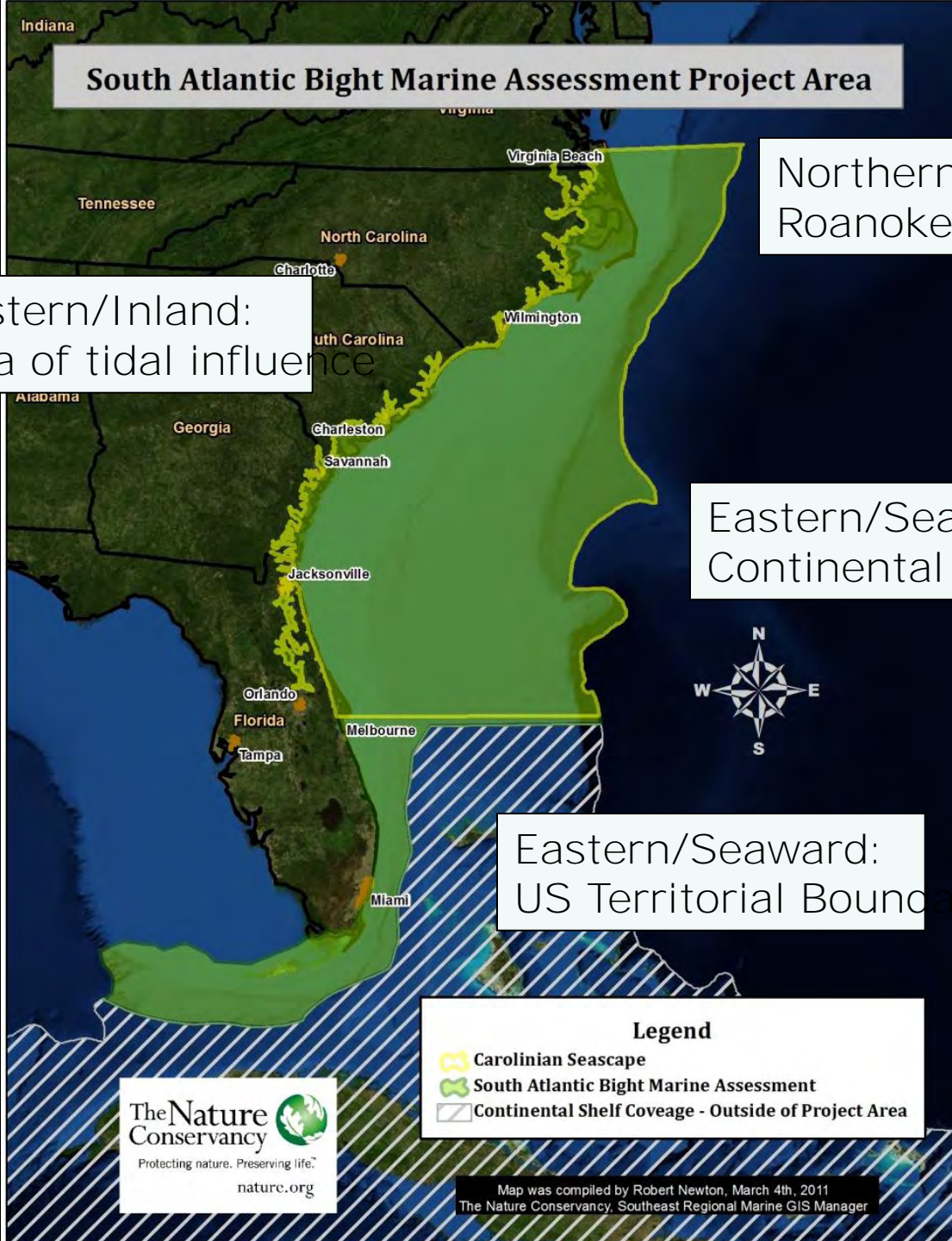
South Atlantic Bight Marine Assessment Project Area

Western/Inland:
Area of tidal influence

Northern:
Roanoke/Chowan Waters

Eastern/Seaward:
Continental Slope E

Eastern/Seaward:
US Territorial Bound



Legend

- Carolinian Seascape
- South Atlantic Bight Marine Assessment
- Continental Shelf Coverage - Outside of Project Area

Map was compiled by Robert Newton, March 4th, 2011
The Nature Conservancy, Southeast Regional Marine GIS Manager