

**An integrated source
of high quality
natural resource
information --**

**The
One NC *Naturally*
Conservation
Planning Tool**

Goals

- **Identify & prioritize essential natural resources that sustain ecological systems long-term.**
- **Coordinate conservation efforts across state.**
- **Provide guidance for conservation funding.**
- **Update every six months.**

6 Coordinated Natural Resource Assessments

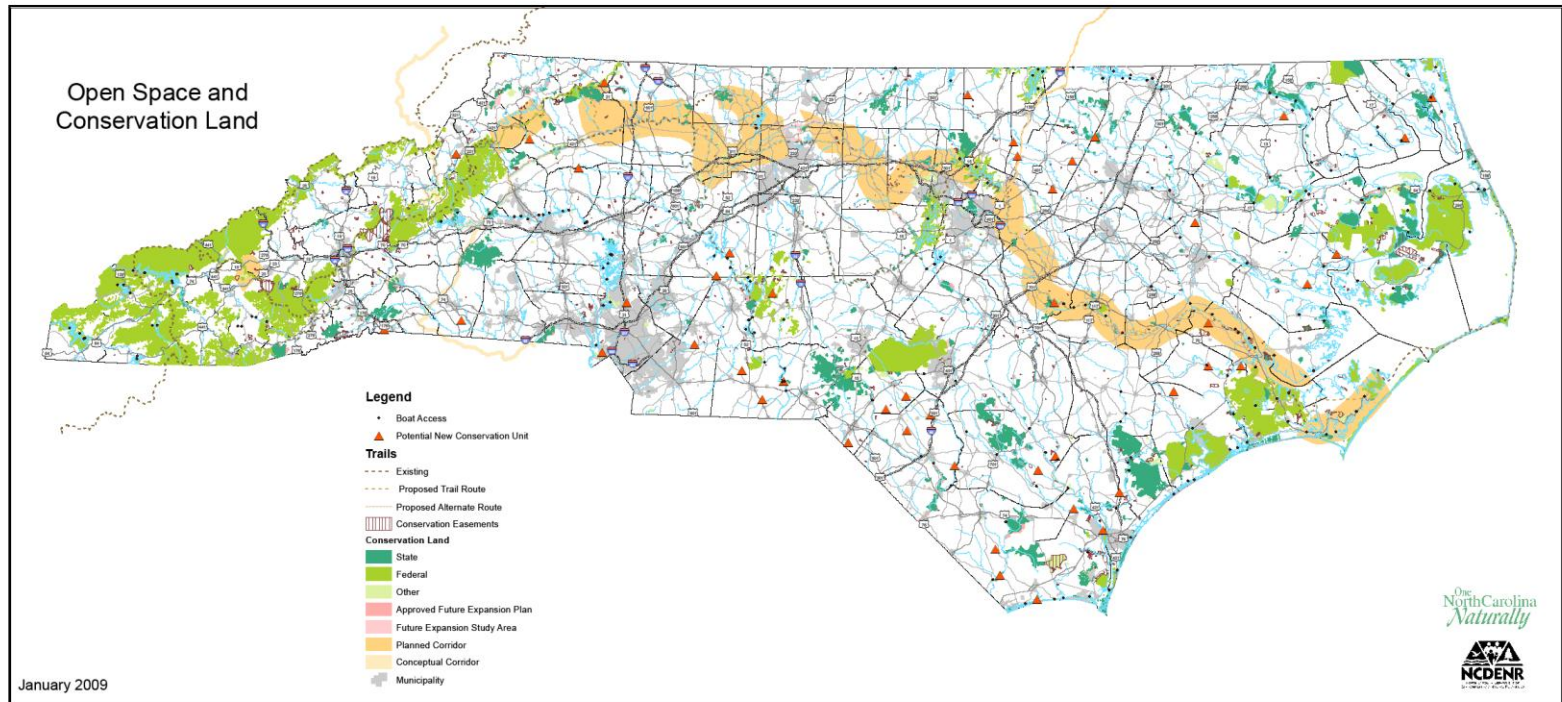
- **Open Space & Conservation Lands**
- **Biodiversity / Wildlife Habitat**
- **Marine / Estuarine Ecosystems**
- **Water Services**
- **Farmland Lands**
- **Forestry Lands**

Open Space & Conservation Lands Assessment



- **Conservation lands – both existing and planned**
- **Managed for conservation by public agencies**

GI "Base" Map: Existing Open Space



Research
Question
#1

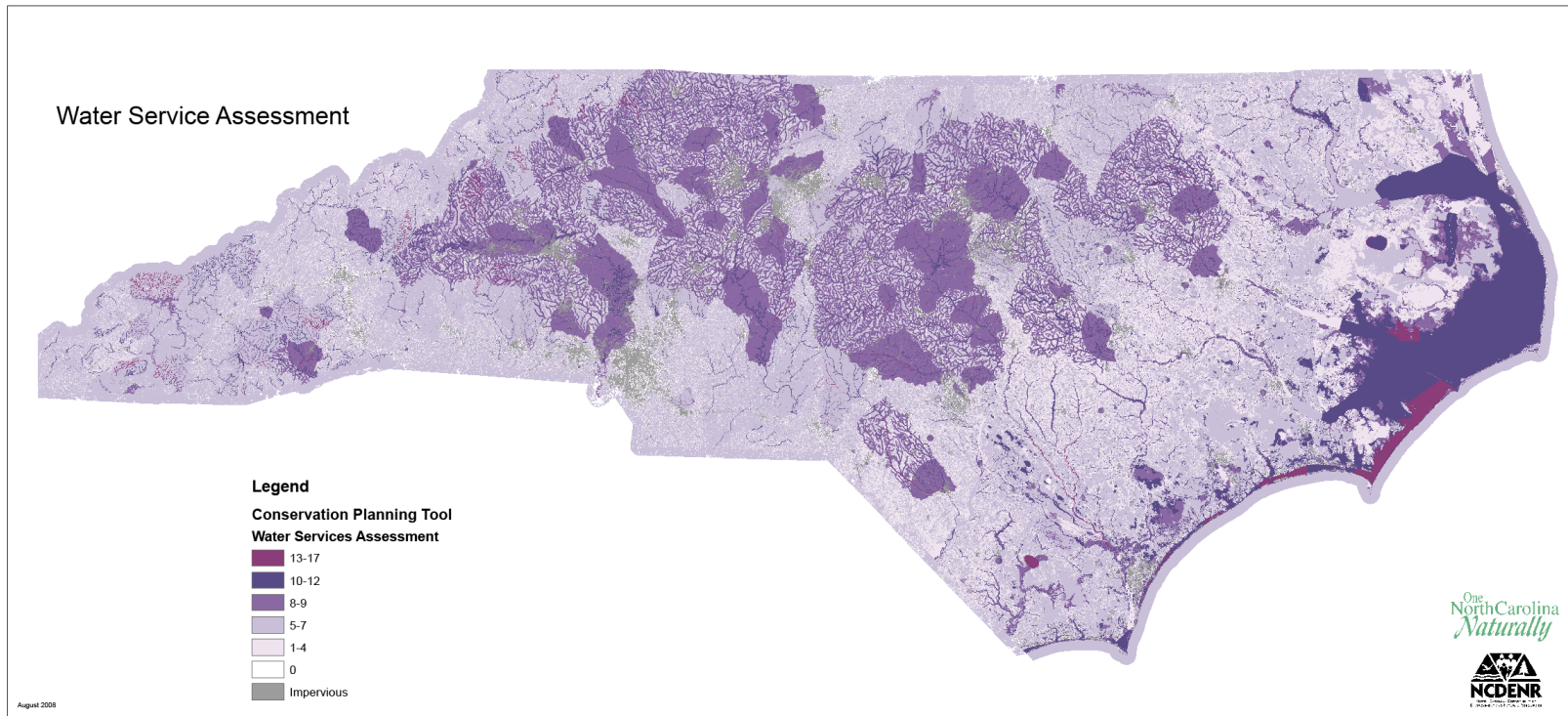
Permanent conservation lands managed by public entities

Water Services Assessment



- **Water quality**
- **Water quantity**
- **Water consumption**

Water Services Assessment



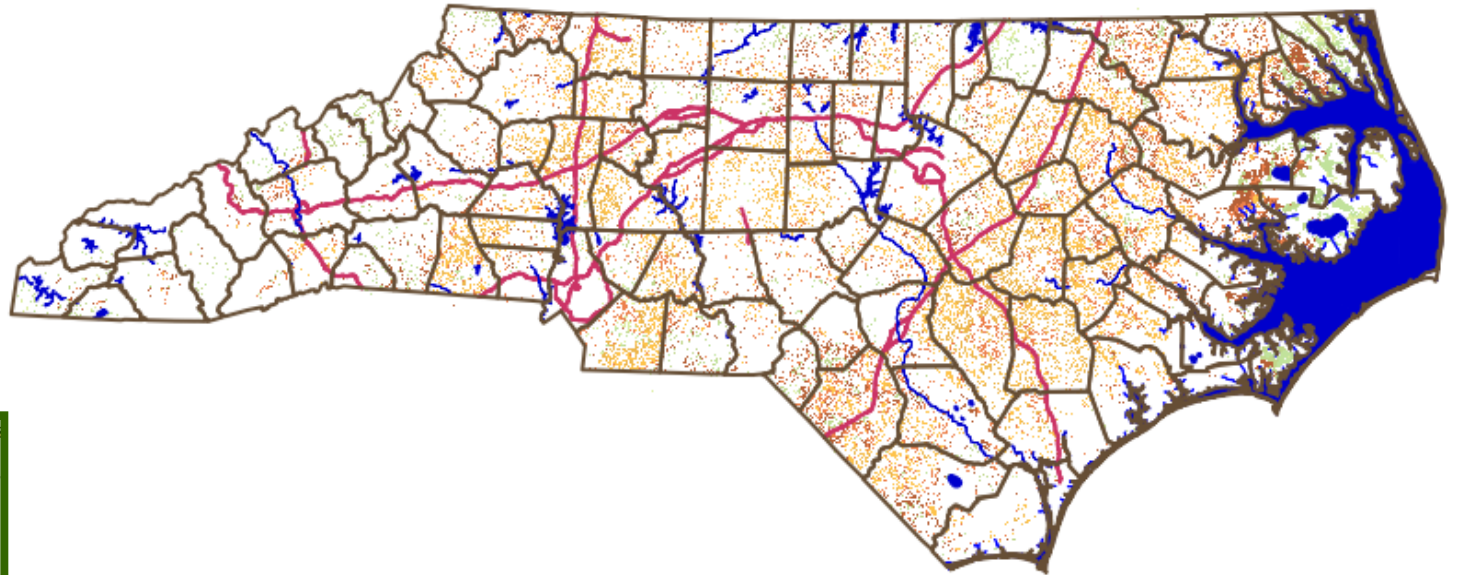
Farmland Assessment



- **Farm & Forestry priority areas**
- **Includes both agricultural land & support infrastructure for agribusiness**

***available through the Dept of Ag.**

Farmland Assessment



Legend Key for Visible Map Layers

- County Boundaries
- Major Waterbodies
- 24k Shoreline
- Interstate Highways
- Low Viability: 0-21
- Medium Low Viability: 22-30
- Medium Viability: 31-37
- Medium High Viability: 38-44
- High Viability: 45-60
- Very High Viability: 61-70
- Not Threatened: 0-1
- Low Threat: 2-10
- Medium Threat: 11-16
- High Threat: 17-26

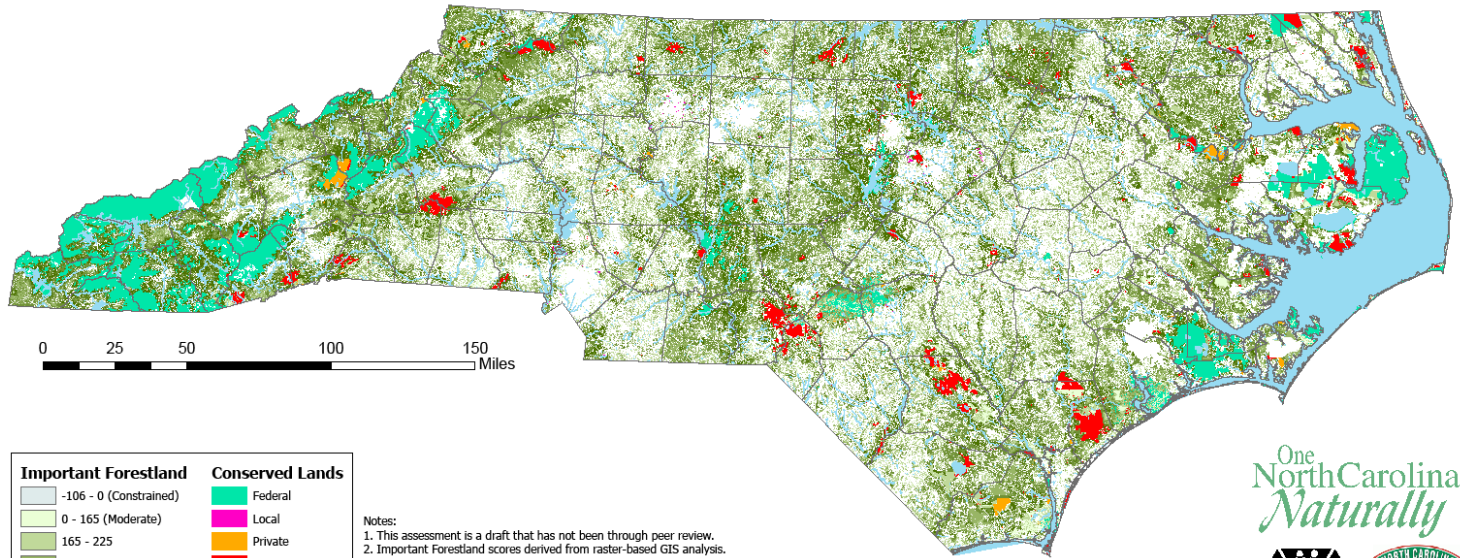
Forestry Lands Assessment

- **Economic potential**
- **Compatible ecosystem services**
- **Absence of management constraints**
- **Data accuracy and completeness**



Forestry Lands Assessment

NC Conservation Planning Tool
Forestry Lands Assessment
- DRAFT -



Important Forestland	Conserved Lands
-106 - 0 (Constrained)	Federal
0 - 165 (Moderate)	Local
165 - 225	Private
225 - 275	State
275 - 340	Water
340 - 450 (High)	

Notes:
 1. This assessment is a draft that has not been through peer review.
 2. Important Forestland scores derived from raster-based GIS analysis.
 3. This map represents a relative conservation value assessment.
 4. Scores are additive, based on weighting and combining freely-available datasets.
 5. Scores are relative values based on available data and professional judgement.
 6. Guiding Principles for the assessment consisted of: Economic Potential, Compatible Ecosystem Services, Absence of Management Constraints, and Data Accuracy/Completeness.

January 2009

Marine / Estuarine Ecosystems Assessment



- Coastal Habitat Protection Plan (CHPP) priority areas
- Includes 6 fish habitats – e.g. oyster beds, submerged vegetation, wetlands
- Water quality protection – from sediment, stormwater, wastewater

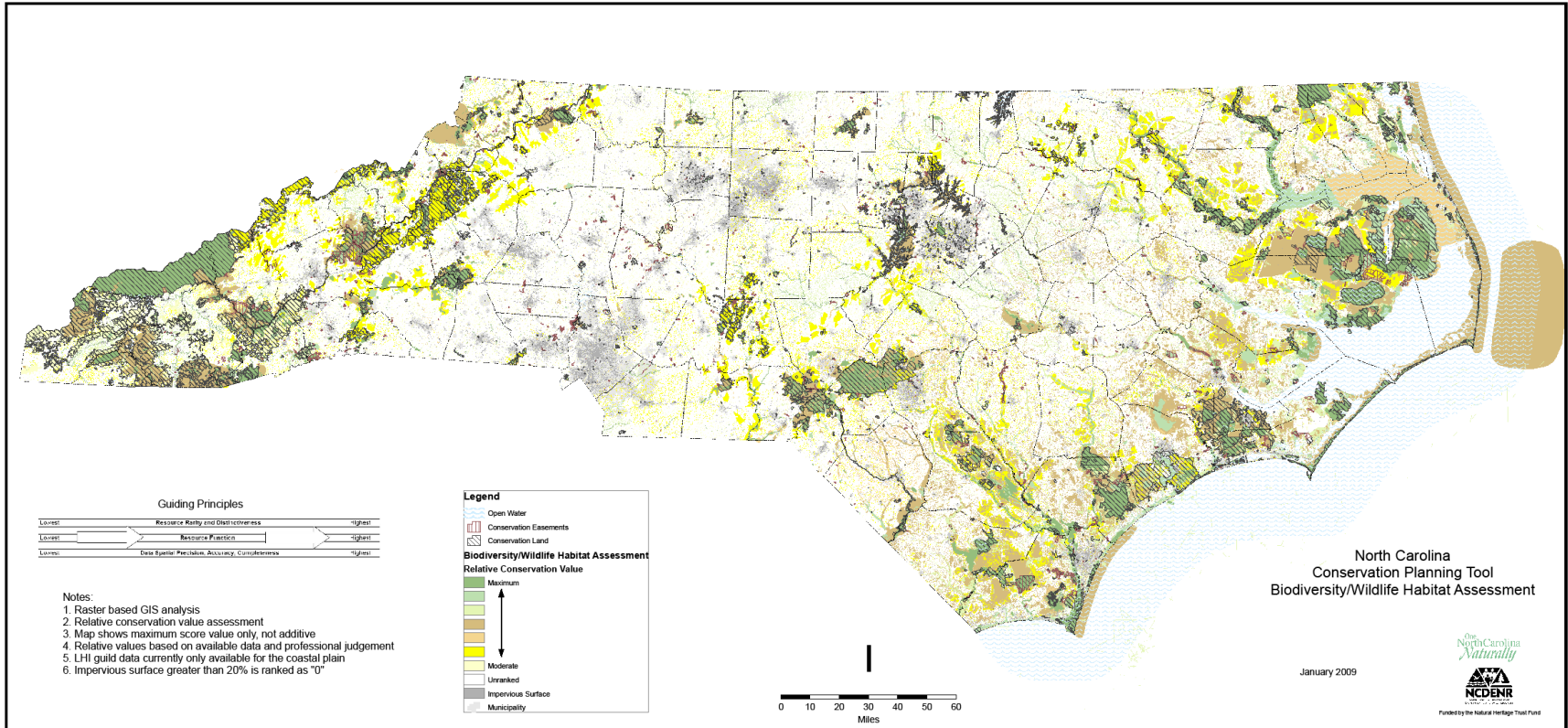
***available late 2009**

Biodiversity / Wildlife Habitat Assessment



- **Aquatic & terrestrial species and communities**
- **Large scale landscapes – Core habitats and connectors**
- **Lands important to ecosystem processes – e.g. wetlands, riparian buffers**

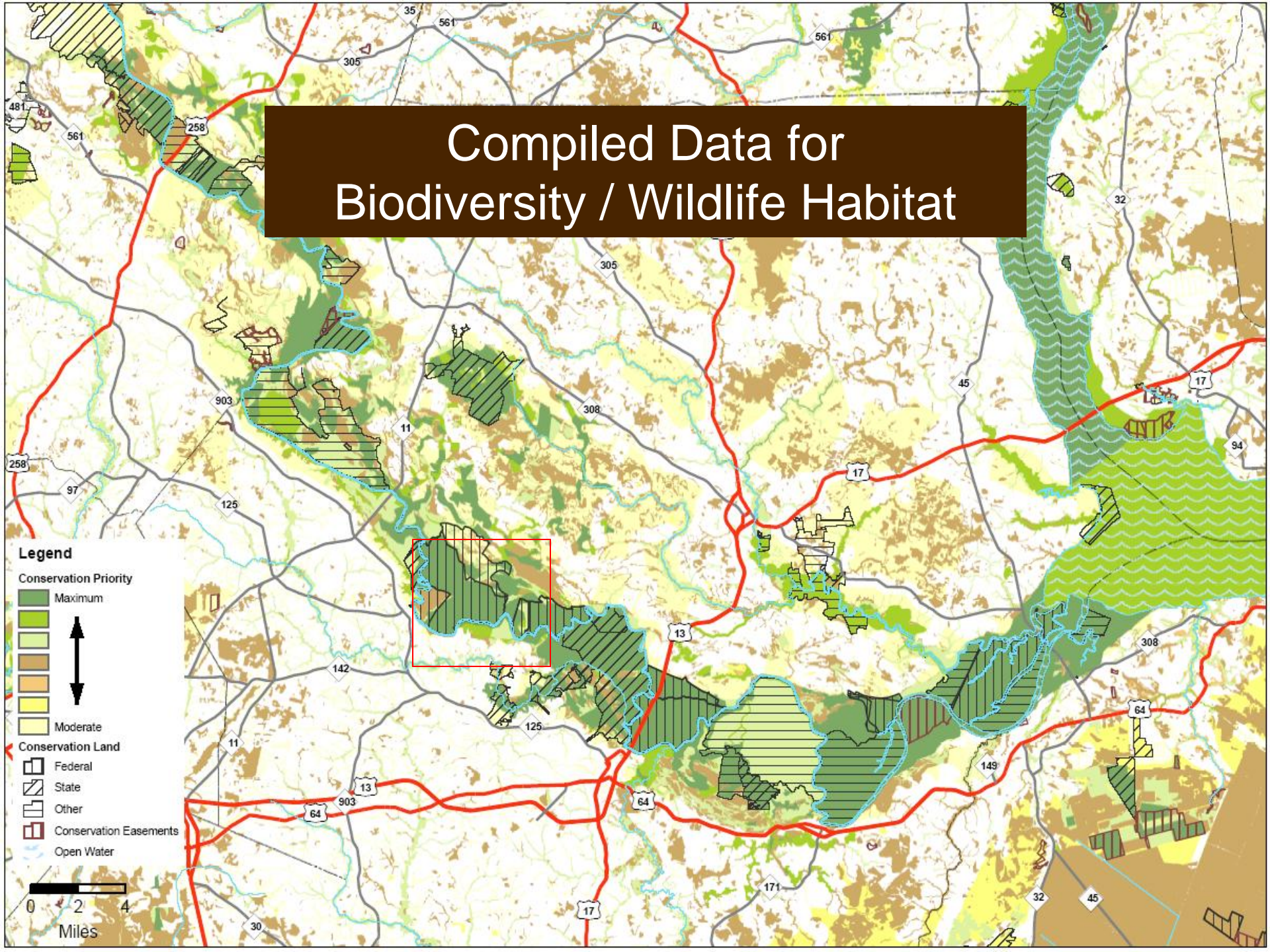
Biodiversity / Wildlife Habitat Assessment



Example:

**Roanoke River –
Martin County**

Compiled Data for Biodiversity / Wildlife Habitat



Legend

Conservation Priority

Maximum

↑

↓

Moderate

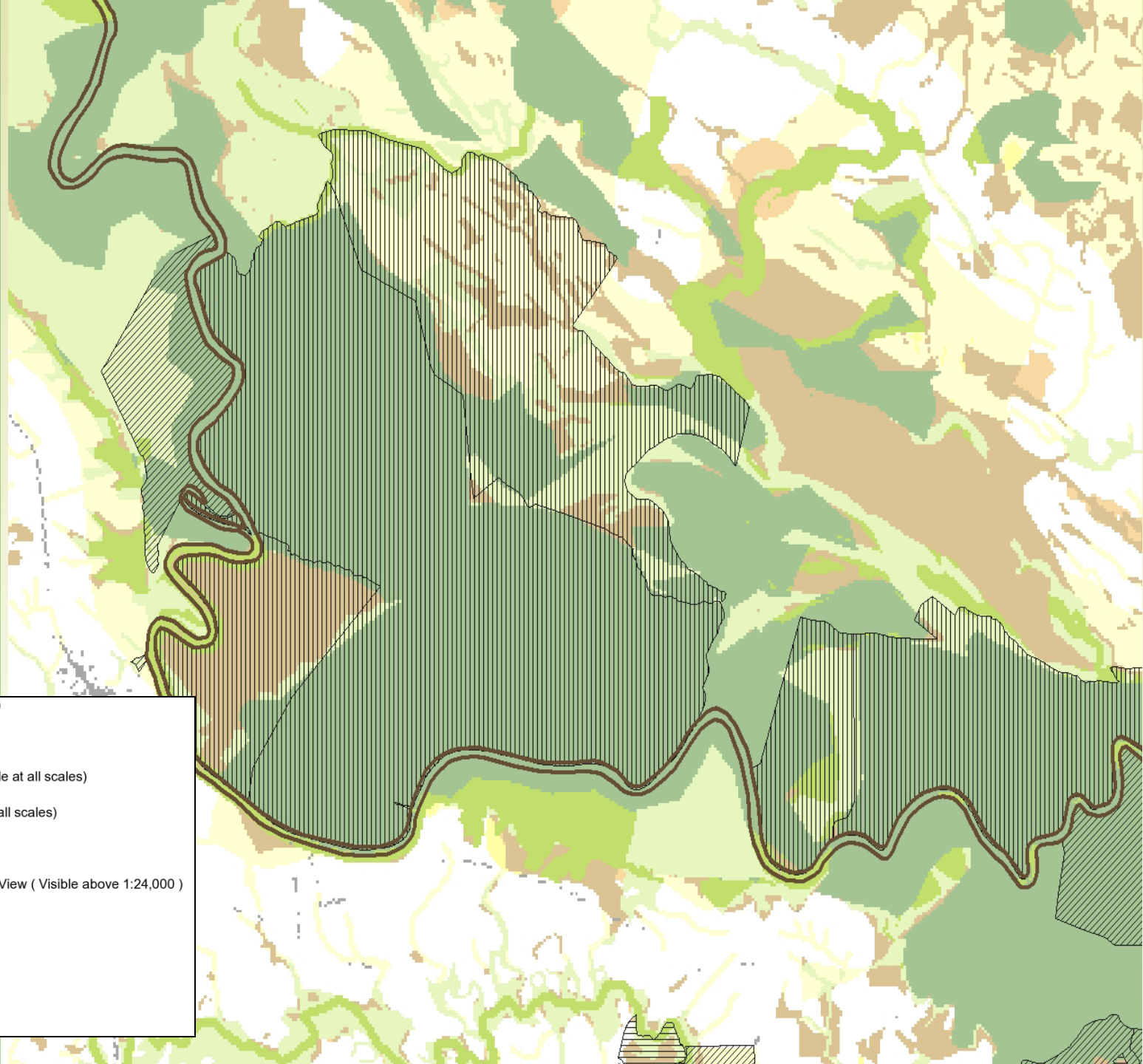
Conservation Land

- Federal
- State
- Other

Conservation Easements

Open Water

0 2 4 Miles



- County Boundaries (visible at all scales)
County Boundaries
- Shoreline (visible at all scales)
24k Shoreline
- Existing Conservation Easements (visible at all scales)
Conservation Lands
- Existing Conservation Lands (visible at all scales)
Federal
State
Other
- Biodiversity/Wildlife Habitat Landscape View (Visible above 1:24,000)
Maximum Rank: 9-10
Rank: 8
Rank: 7
Rank: 6
Rank: 5
Rank: 2-4
Moderate Rank: 1
Impervious: -1

ID Tool & Attribute Table

One NC Naturally - Conservation Planning Tool - Windows Internet Explorer

http://wfs.enr.state.nc.us/fist/fistMain.php?site=Conser-Vision

File Edit View Favorites Tools Help

Web Search Bookmarks Settings Mail My Yahoo! Answers Games Anti-Spy

One NC Naturally - Conservation Planning Tool

One NC Naturally Conservation Planning Tool

Full State Zoom In Zoom Out Back Pan Identify Distance Area Export PDF Clear

Layers Legend Guide About

Map Layers

Note: Some layers are only visible when you are zoomed in to a small area on the map. If the layer you turned on is still not visible after a refresh, check your map scale (below) - you may need to zoom in a bit more.

Refresh map

- Roads
- Hydrography
- Boundaries
- Watersheds
- Planning Tool Layers
 - Existing Conservation Easements (visible at all scales)
 - Existing Conservation Lands (visible at all scales)
 - Biodiversity/Wildlife Habitat Local View (Visible below 1:24,000)
 - Biodiversity/Wildlife Habitat Landscape View (Visible above 1:24,000)
- Imagery

Refresh map

Active Tool: **Identify** Identify All Layers
 Biodiversity/Wildlife Habitat Landscape View (Visible above 1:24,000)
 Active Layer: **Landscape View (Visible above 1:24,000)**
 Map Scale: **1 : 73,071 (Change scale)**

Identify All Visible Layers - Results

http://wfs.enr.state.nc.us/fist/fistDrillDownIdentifyResults.php?width=976&heig

Identify All Visible Map Layers - Results

Note: If many / large map layers are visible, results may take a moment to generate and become visible below. Please be patient.

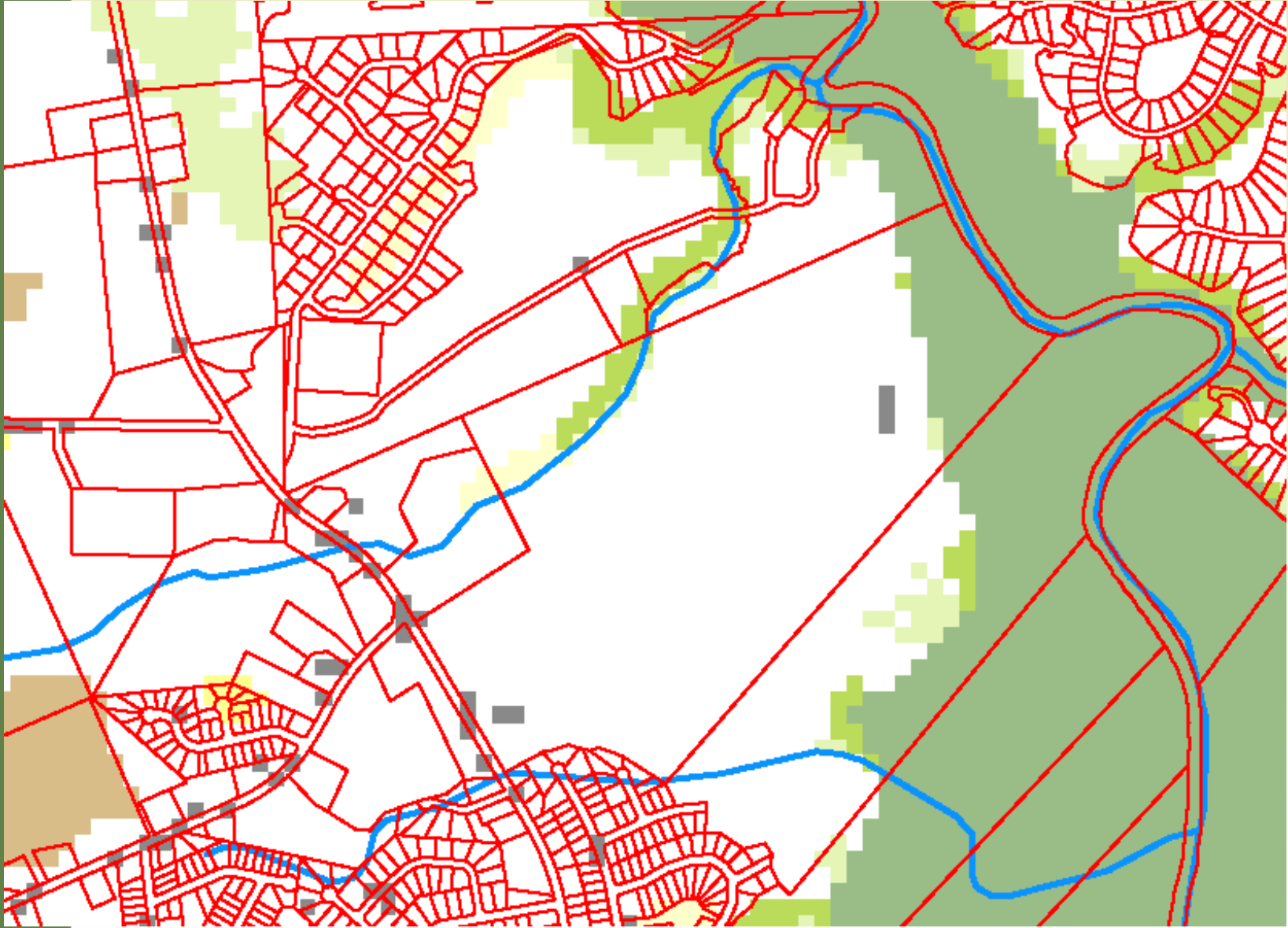
Local_Biodiversity
 Landscape_Biodiversity
 County_Boundaries

Layer: Local_Biodiversity	
Displaying records: 1-1 of 1	
FINAL	9
NHP	0
WETLANDS	6
GUILDS	9
DWQ	0
FISHHABITA	0
FISHNURSER	0
WATERSHEDS	0
MARINE	0
HARDBOTTOM	0
IBA	6
IMPERVIOUS	0
GRIDCODE	981
ID	819587
AREA	262122.975
PERIMETER	2894.852
ACRES	64.772

Done Internet 100%

start | Inbox for Kim.Dou... | Yahoo! Mail - kim... | One NC Naturally ... | Identify All Visible... | Yahoo! Messenger | 10:29 AM

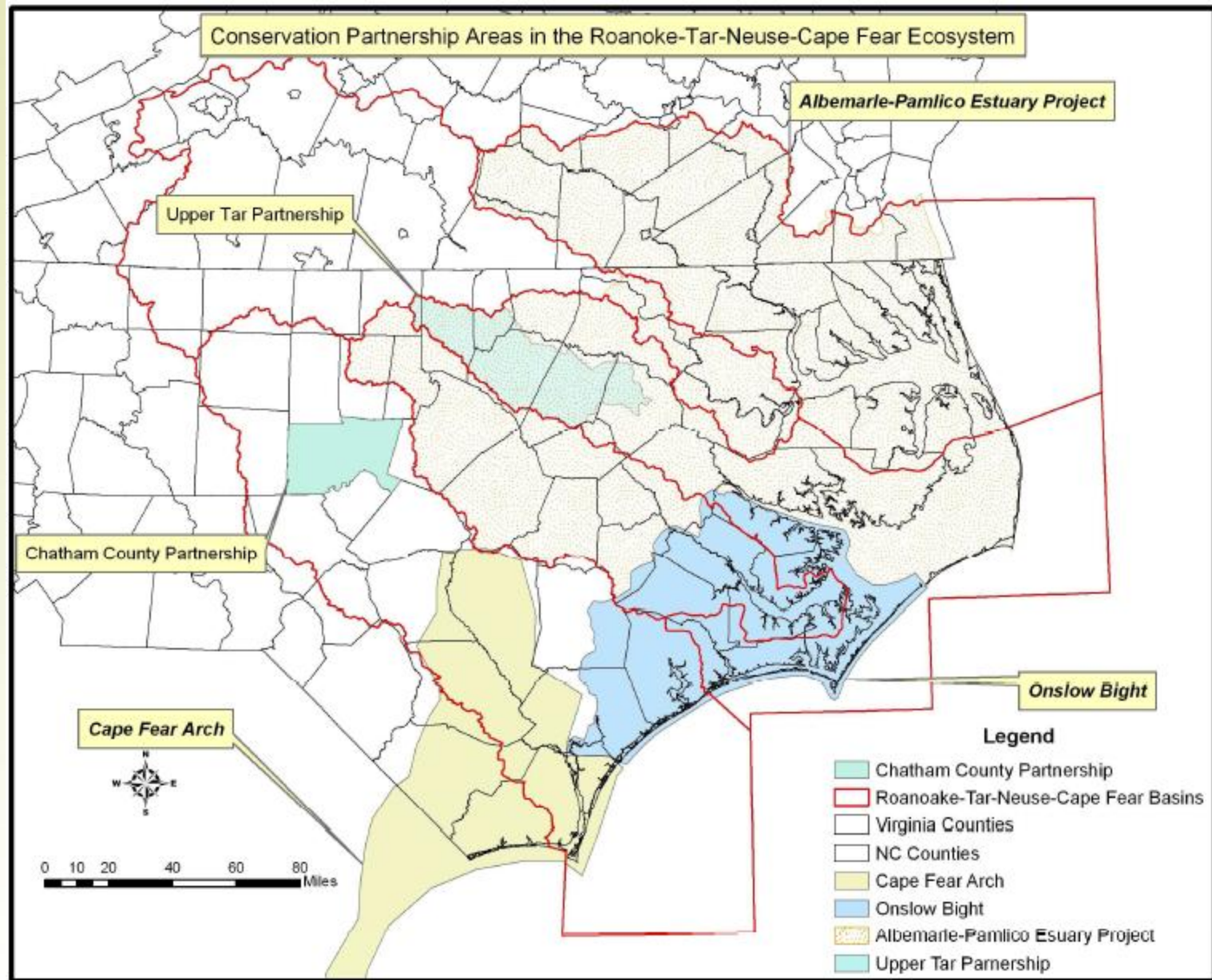
Add local data



Next Steps: Threats Assessment

- **Climate Change**
 - ◆ Sea level rise models
 - ◆ USFWS work on habitat change
- **Population Growth / Patterns**
 - ◆ Chesapeake Bay Program
- **Landslide Hazards**
 - ◆ Studies underway

Resources Across Borders



Conservation Planning Tool is being used to:

- **Guide future conservation and compatible land use planning at state, regional and local levels**
- **Inform funding decisions**
- **Working with NC DOT to include in their planning processes**

Conservation Planning Tool is available at:

- ◆ **www.oneNCnaturally.org**
 - ◆ **GIS data download for professionals**
 - ◆ **Interactive map viewer on Web**
 - ◆ **Printable maps**
 - ◆ **Detailed Report**

Contact Information:

Kim.Douglass@ncmail.net

919-715-7807