

Review of 2015-2016 Projects

Coley Hughes, Ph.D.
Albemarle-Pamlico National Estuary Partnership

29 April 2016
APNEP Policy Board Meeting
Greenville, NC





5 Components

IDENTIFY

PROTECT

RESTORE

ENGAGE

MONITOR

Identify



Economic Valuation of the Albemarle-Pamlico Watershed



Economic Analysis of Restoration and Enhancement of Shellfish Habitat and Oyster Propagation in North Carolina



Sea Grant/APNEP Fellowship

"Risky business: Consumption of self-caught fish in Tyrrell County, North Carolina."



Protect



Coastal Habitat Protection Plan

**North
Carolina
Coastal
Habitat
Protection
Plan**

By
Anne S. Deaton¹, William S. Chappell¹, Kevin Hart¹,
Jessi O'Neal¹, and Brian Boutin²

¹ North Carolina Department of Environment and Natural
Resources, Division of Marine Fisheries
² The Nature Conservancy

December 2010



Restore

State Parks Habitat Enhancement



Shad in the Classroom



Engage

Teacher Institutes



Teacher Workshops



Ecosystem Monitoring and Assessment

North Carolina's Underwater Grasses:

A Lesson Plan on Ecosystem Monitoring and Assessment

Lesson Overview and Standards.....	2
<i>For teachers</i>	
Introduction to the Albemarle Pamlico Estuarine System.....	5
<i>For teachers</i>	
Introduction to Monitoring and Assessment.....	6
<i>For teachers</i>	
Introduction to Submerged Aquatic Vegetation	7
<i>For teachers</i>	
Pre-lesson discussion.....	8
<i>Introduce students to the assignment</i>	
Student worksheets.....	10
<i>Reading questions based on indicator report</i>	
Worksheet answers.....	12
<i>For teachers</i>	
Indicator report.....	16
<i>Assignment reading material</i>	

Lesson plan developed by:



1

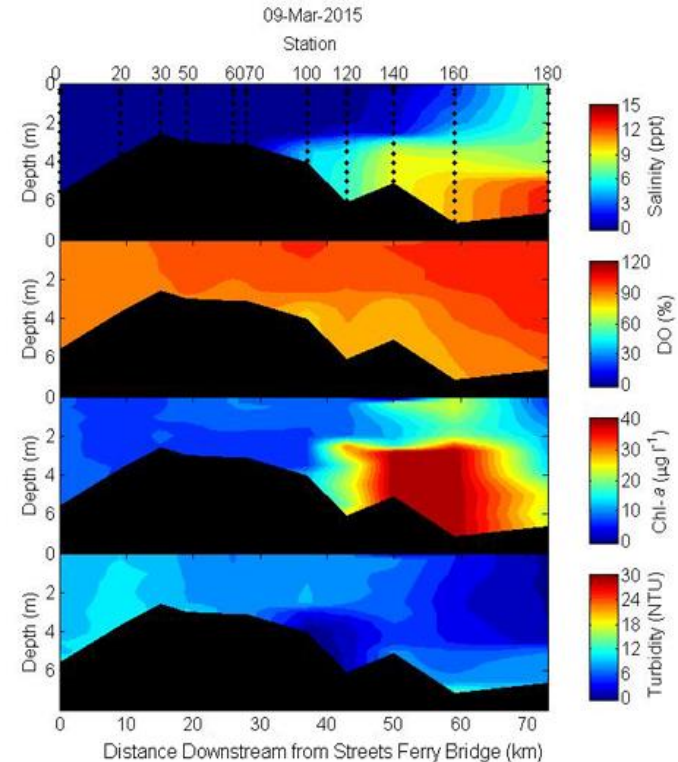


Monitor

Seagrass Mapping and Monitoring



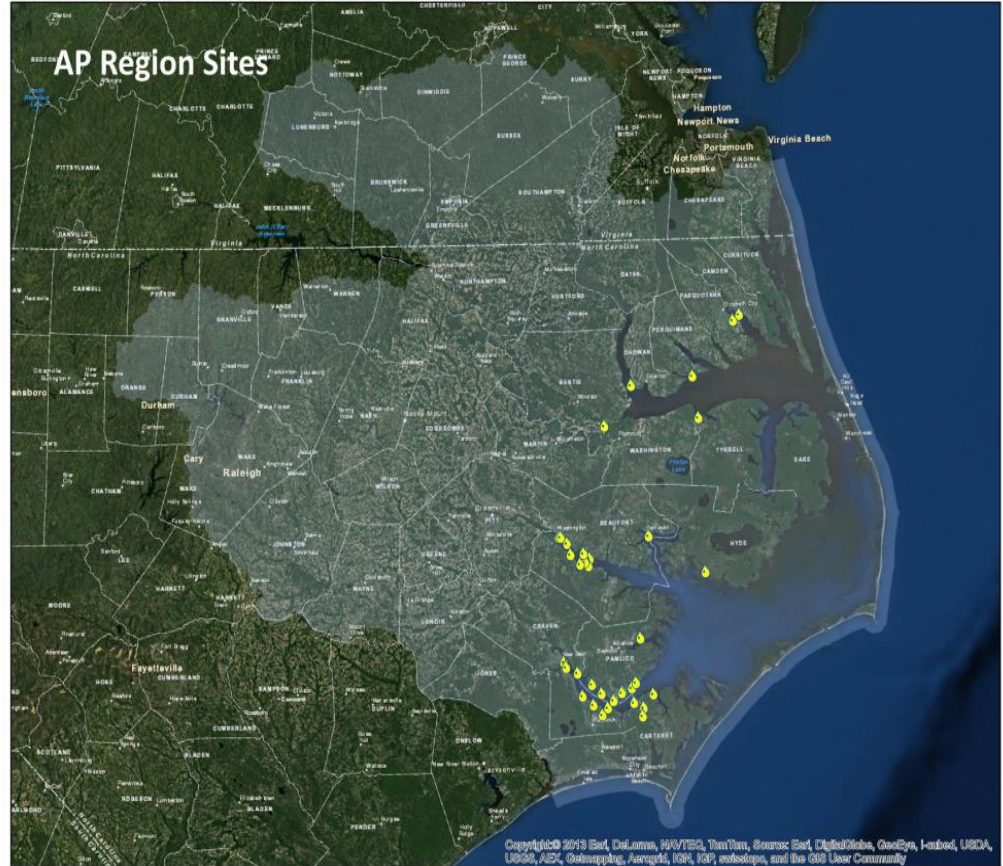
Neuse River Estuary Modeling and Monitoring Project



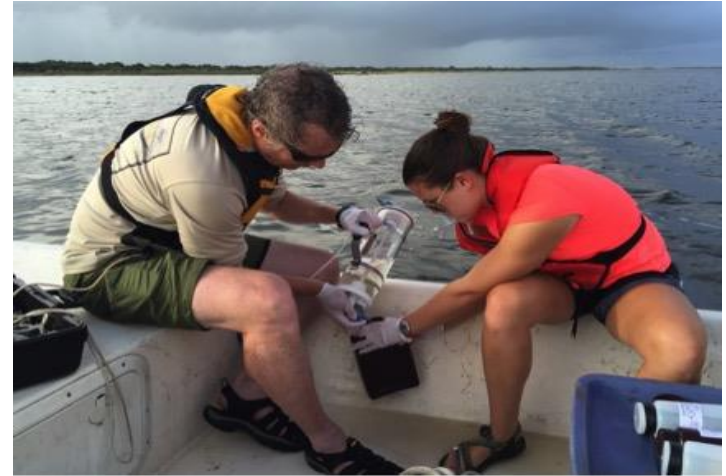
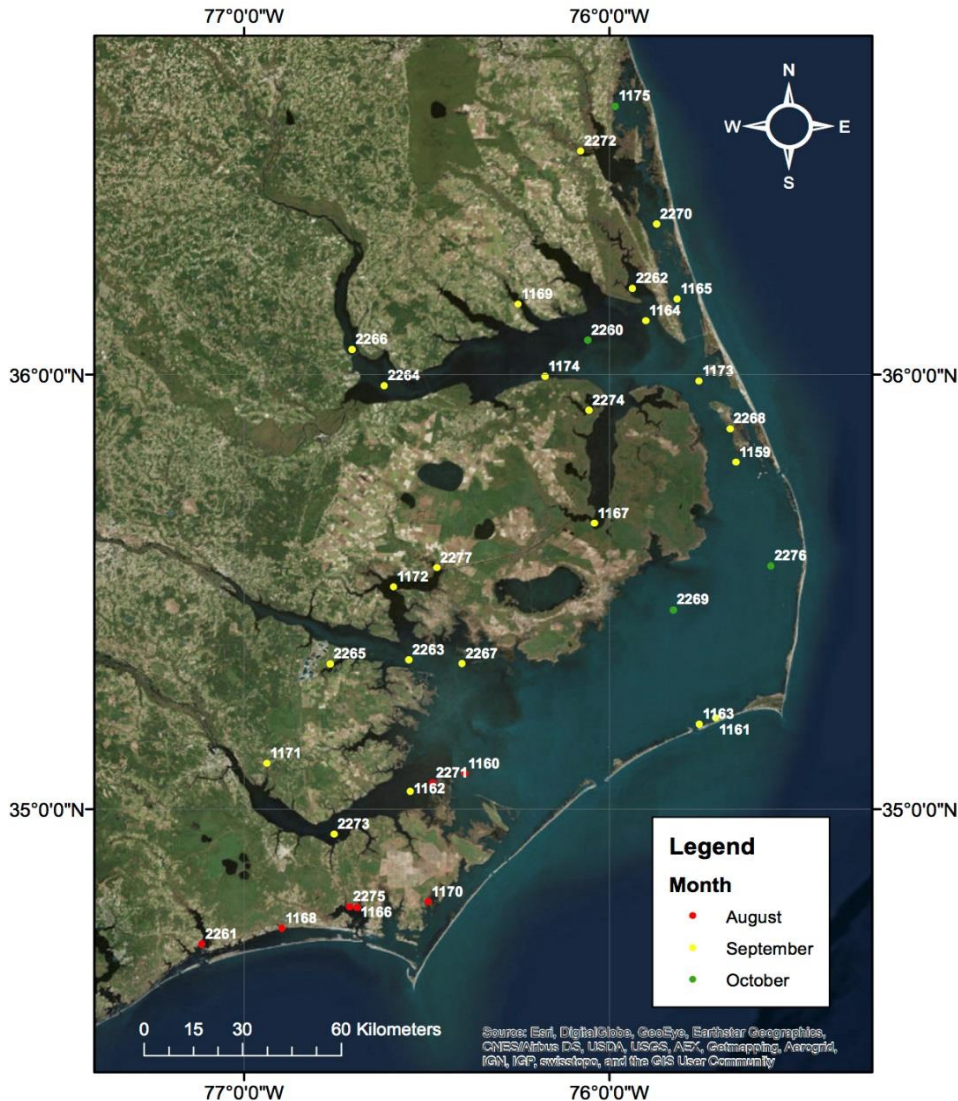
<http://www.unc.edu/ims/neuse/modmon/>

<https://www.inba.net/content/modmon-ferrymon>

Recreational Water Quality Monitoring



National Coastal Condition Assessment Sampling



- In-situ water quality (temperature, DO, salinity/conductivity, pH)
- Secchi disk measurements
- Water chemistry: nitrogen/phosphorous, chlorophyll-a, dissolved nutrients
- Sediment grab
- Qualitative habitat/shoreline assessment



Questions?

