

APNEP Engagement & Stewardship Action Team

Melissa Dowland
Coordinator of Teacher Education
NC Museum of Natural Sciences

Stacey Webb Feken, M.S.
Policy and Engagement Manager
Albemarle-Pamlico National Estuary Partnership

December 11, 2017
Raleigh, NC Museum of Natural Sciences



APNEP Program Initiatives

- NEW! North Carolina Governor's Executive Order
- Increased collaboration with Virginia:
 - NEW! Memorandum of Understanding (NCDEQ/NCDCR/VADCR)
- Ecosystem Symposium: November 1
- Implementation Action Teams
- Coastal Habitat Protection Plan Implementation
- Monitoring & Assessment Teams: Indicator Development
- Tracking: EPA Program Review in 2018 / Progress towards CCMP Implementation/

Meeting Goals

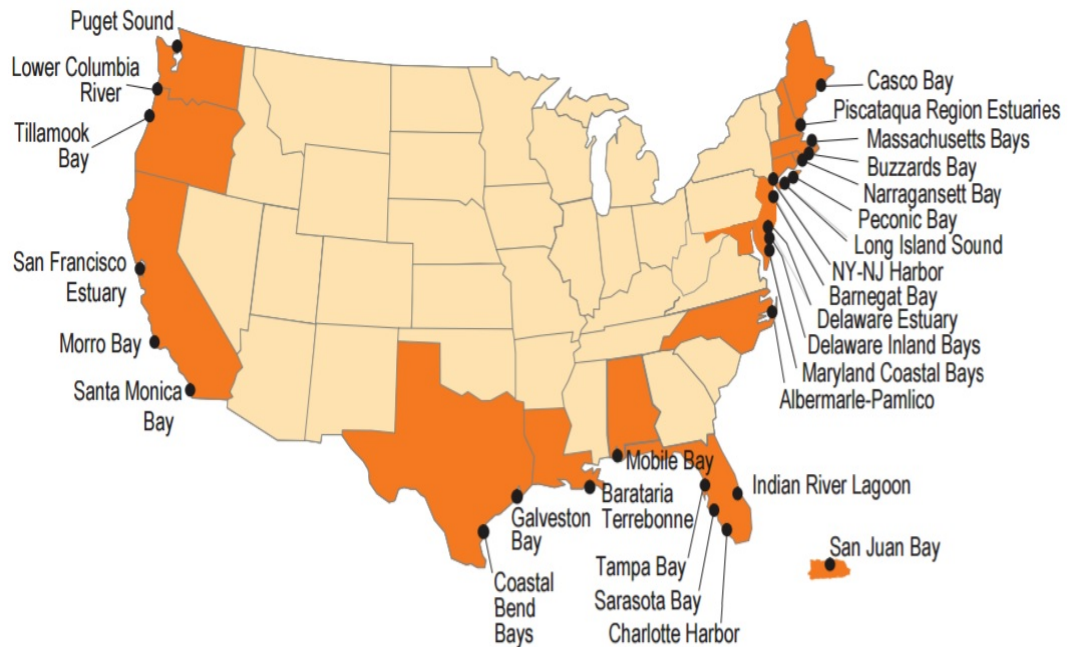
- To make sure everyone understands APNEP's work and the team's role within APNEP's larger mission.
- To identify gaps in engagement and stewardship in the APNEP region.
- To develop specific, collaborative engagement and stewardship projects.
- To identify concrete steps towards developing and implementing an action plan.

Team Member Feedback: Meeting Goals



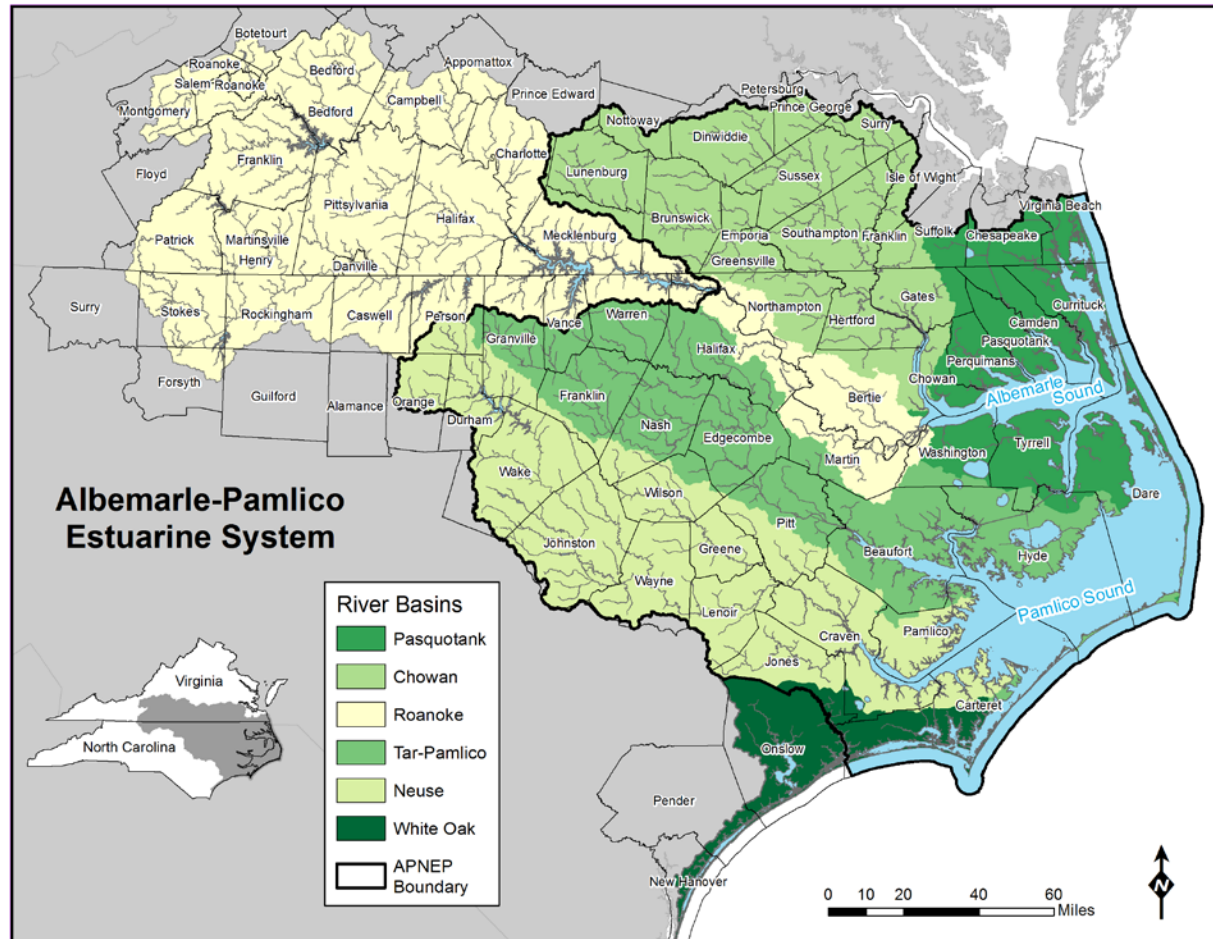
National Estuary Program: *Estuaries of National Significance*

- Designated as an estuary of national significance by Congress in 1987.
- One of 28 National Estuary Programs established under Section 320 of the Clean Water Act (CWA).
- NEPs are locally based, stakeholder driven, non-regulatory programs



Where We Work: Headwaters to the Sea

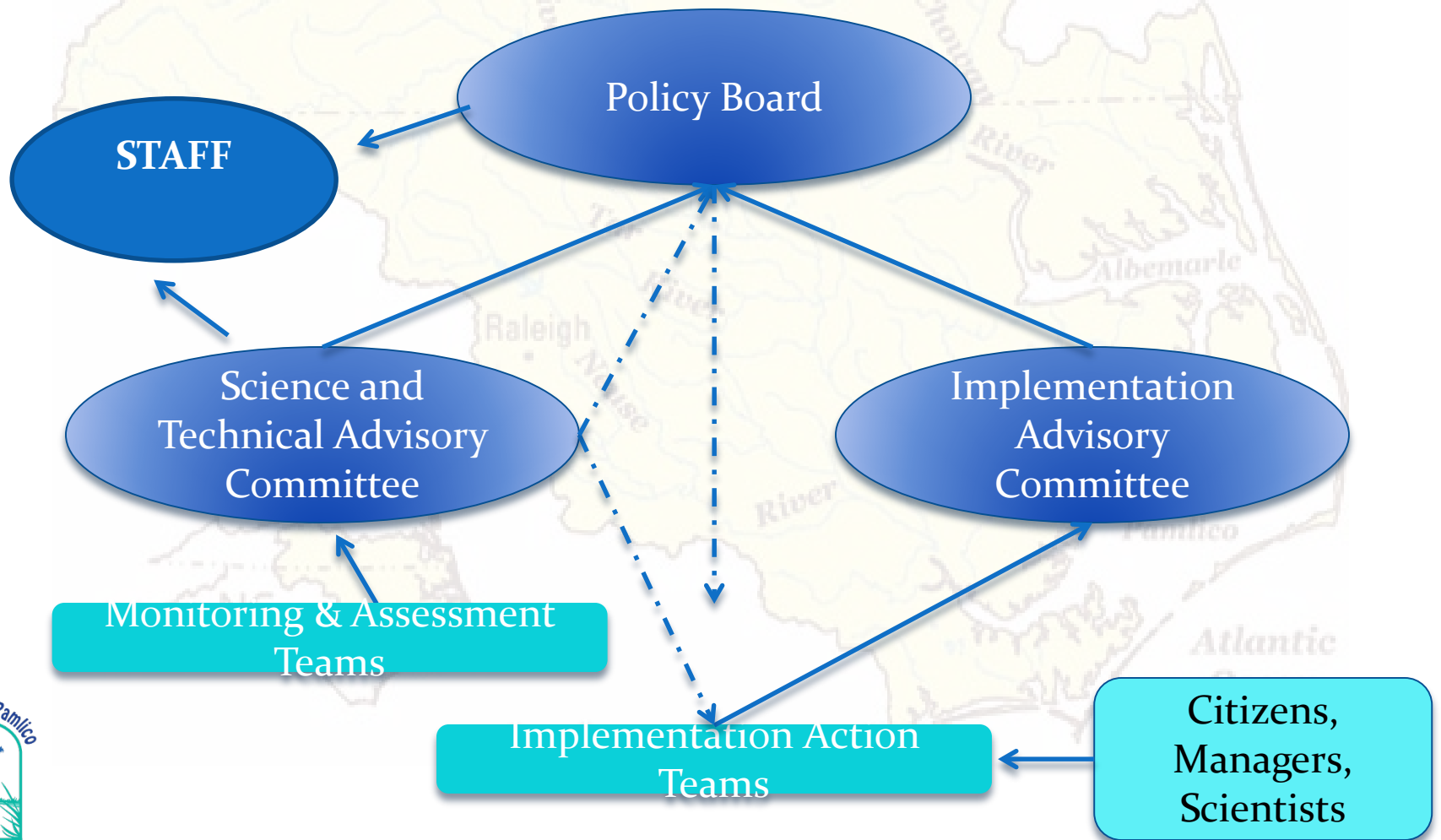
Watersheds of the Albemarle-Pamlico Estuarine System



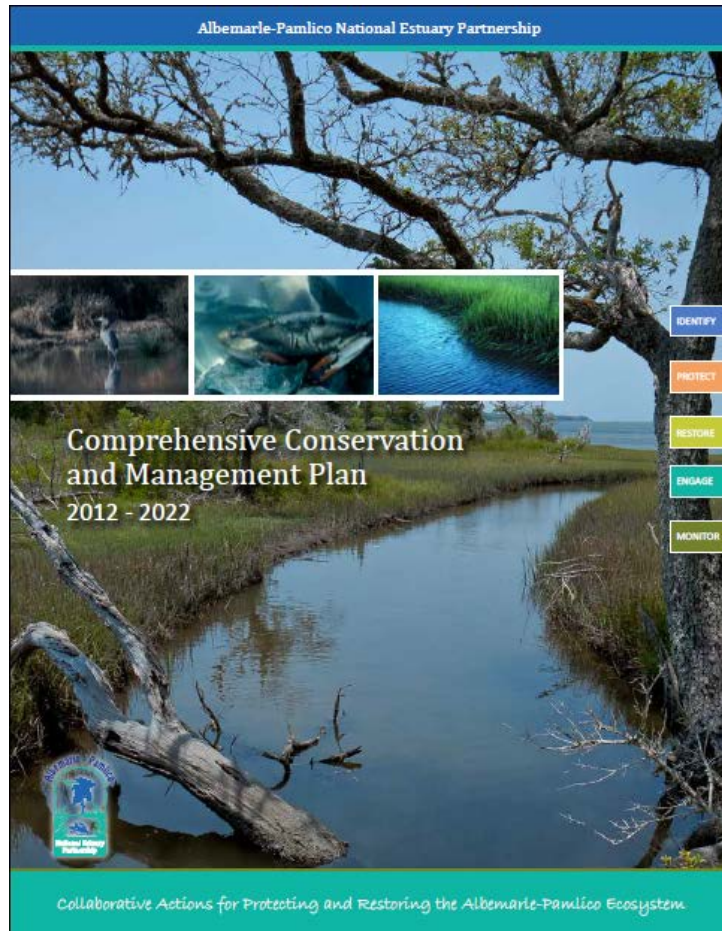
How We Work: APNEP Management Conference

Established by Governor's Executive Order

Some form required of all National Estuary Programs



Our guidance: APNEP Strategic Plan



- Projects must align with objectives and actions in APNEP Comprehensive Conservation and Management Plan (CCMP).
- **58 CCMP actions:** including land conservation, fish habitat, engagement, environmental education, hydrologic restoration, monitoring, applied research
- Partners engaged in decision making that benefits region and estuarine system

Implementation Action Teams

Teams help guide partnership priorities, implementation, and focus

Initiated/Active:

- Engagement & Stewardship
- Freshwater Habitats and Fish Passage
- Ecological Flows
- Invasives
- Decision Support Tools
- Submerged Aquatic Vegetation
- Contaminant Management
 - Albemarle Nutrient Pilot Workgroup

Not Yet Active:

- Restoration Strategies
- Public Access
- Natural Resource Policy & Economics
- Water Quality Improvements
- *External:*
 - Oyster Restoration
 - Living Shorelines



What does the Engagement & Stewardship Action Team Do?

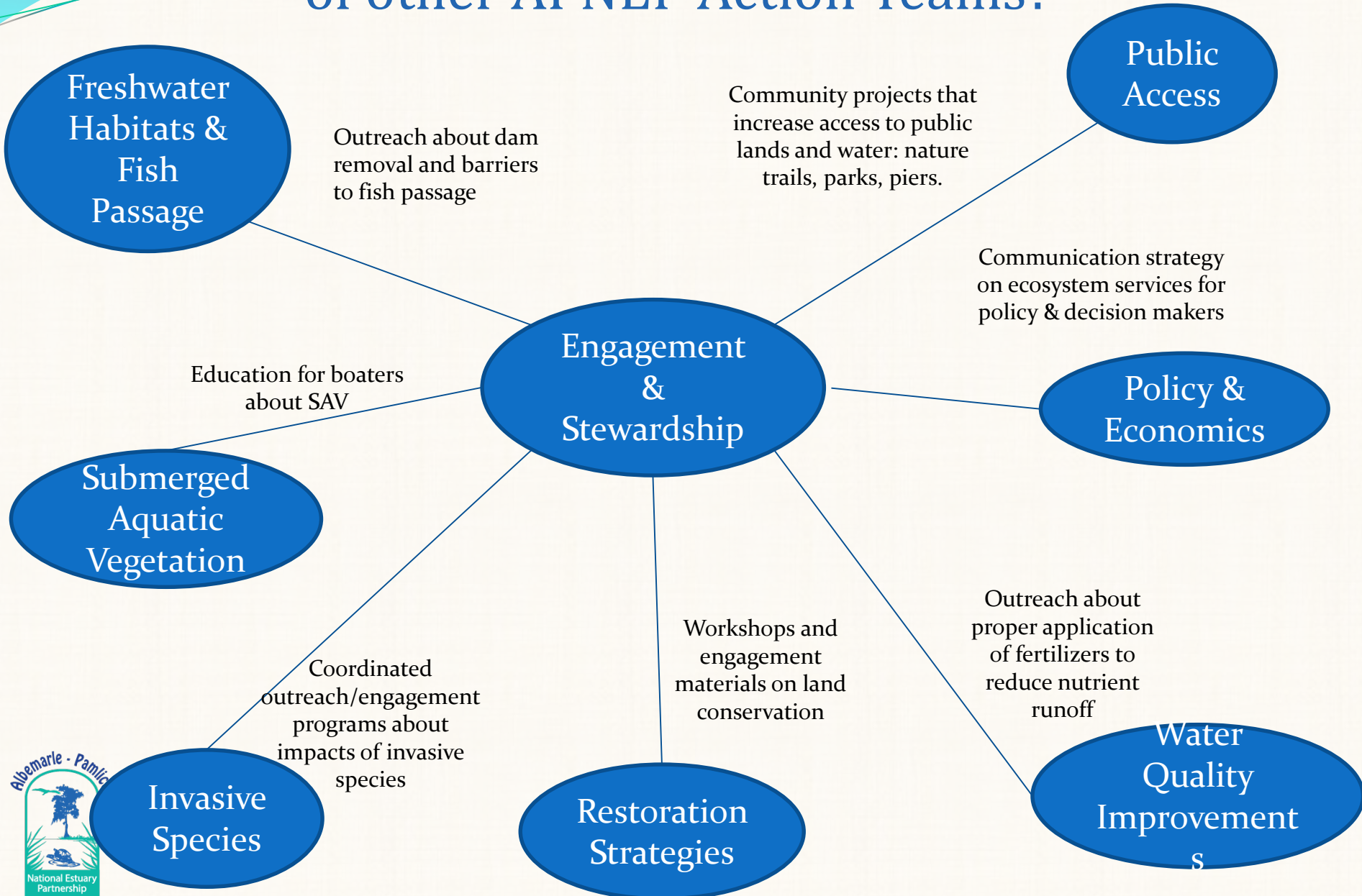
- APNEP is stakeholder-driven – we rely on feedback from partners and participants to direct our work
- One of 13 Action Teams – each team focuses on a different topic
- Comprised of citizens, managers, scientists, and other stakeholders
- Each team works to carry out CCMP “Actions” related to their subject area

What actions will the Engagement & Stewardship Team implement?

- Action D1.1: Communicate the **importance of stewardship** and offer **opportunities for volunteerism** to further APNEP's mission.
- Action D2.1: Provide & promote opportunities for **outdoor experiences** that connect individuals with the A-P ecosystem.
- Action D2.2: Provide **environmental education training opportunities** for educators in the region.
- Action D2.3: Increase **public understanding of the relationship between ecosystem health and human health advisories** relating to water, fish, and game.



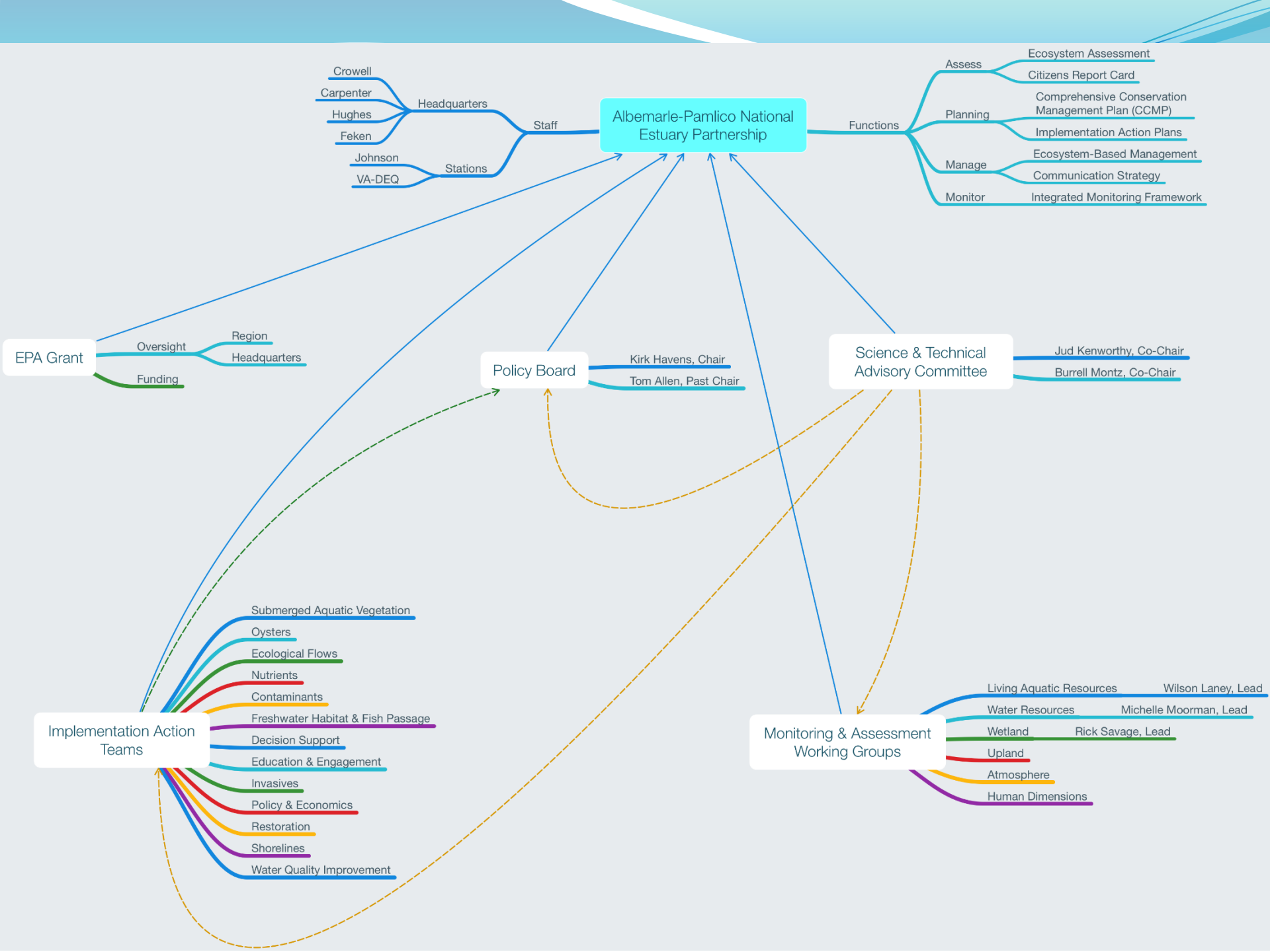
How can this team integrate their work with the goals of other APNEP Action Teams?



APNEP Funding



- Funded by the Environmental Protection Agency (EPA) through a grant to the NC Department of Environmental Quality.
- Matching Funds from DEQ via in-kind services and cash for CWMTF / Water Infrastructure projects to improve wastewater treatment and water quality
- Approximately \$20K for each action team
- Implementation Advisory Committee decides how funds allocated
- Leverage Resources: Applicants/Partners: 1:1 Match Required
- Partners include universities, non-profit organizations, community groups, state, federal, and local government agencies.



Albemarle-Pamlico National Estuary Partnership

Staff

Headquarters

- Crowell
- Carpenter
- Hughes
- Feken

Stations

- Johnson
- VA-DEQ

Functions

- Assess
- Planning
- Manage
- Monitor

- Ecosystem Assessment
- Citizens Report Card
- Comprehensive Conservation Management Plan (CCMP)
- Implementation Action Plans
- Ecosystem-Based Management
- Communication Strategy
- Integrated Monitoring Framework

EPA Grant

- Oversight
- Funding

- Region
- Headquarters

Policy Board

- Kirk Havens, Chair
- Tom Allen, Past Chair

Science & Technical Advisory Committee

- Jud Kenworthy, Co-Chair
- Burrell Montz, Co-Chair

Implementation Action Teams

- Submerged Aquatic Vegetation
- Oysters
- Ecological Flows
- Nutrients
- Contaminants
- Freshwater Habitat & Fish Passage
- Decision Support
- Education & Engagement
- Invasives
- Policy & Economics
- Restoration
- Shorelines
- Water Quality Improvement

Monitoring & Assessment Working Groups

- Living Aquatic Resources - Wilson Laney, Lead
- Water Resources - Michelle Moorman, Lead
- Wetland - Rick Savage, Lead
- Upland
- Atmosphere
- Human Dimensions