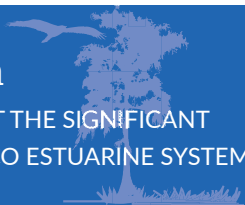


ALBEMARLE-PAMLICO NATIONAL ESTUARY PARTNERSHIP



Our Mission

TO IDENTIFY, RESTORE, AND PROTECT THE SIGNIFICANT
RESOURCES OF THE ALBEMARLE-PAMLICO ESTUARINE SYSTEM



What is an Estuary?

An estuary is the place where a river meets the sea. There, fresh and saltwater mix to form a unique and valuable ecosystem.

North Carolina's vast estuaries provide economic benefits to local communities, increase protection from coastal storms, and are a vital habitat for marine and freshwater creatures.



What Makes Our Estuary Worth Protecting?

Clean water means quality seafood, healthy produce, and thriving local businesses.



Estuaries produce **more food per acre** than even the richest farmland.



Estuaries support **75%** of America's commercial fishing catch and **80-90%** of recreational fishing catch.



Our sounds support **billions of dollars** in economic activity each year through industries such as **fisheries, tourism, real estate, and shipping.**



Healthy estuaries also help to **protect communities** from flood waters and **improve water quality** by filtering stormwater runoff that may contain pollutants.

How Can You Help to Protect the Albemarle-Pamlico?

The Albemarle-Pamlico region sustains both human and natural communities. Yet it also faces unique challenges and must be protected if we hope to preserve its benefits for generations to come.

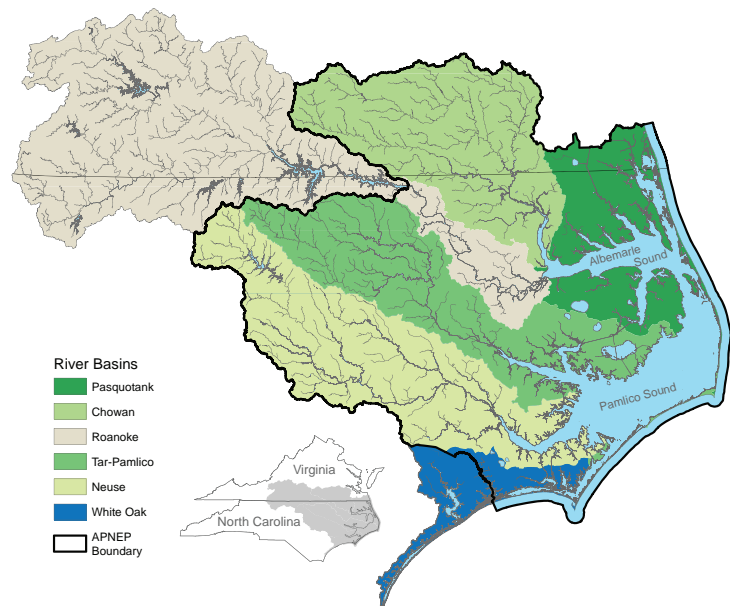
We involve citizens as one of our most important partners in protecting the Albemarle-Pamlico estuarine system. Through our network of partners in the region, APNEP can connect interested individuals or groups with opportunities for volunteering and citizen science.

We encourage everyone, whether they are residents or visitors, to get outside and experience all the region has to offer. Explore the Albemarle-Pamlico and learn why it is worth protecting.

Contact APNEP at apnep@ncdenr.gov for more information and to learn how you can participate on our committees and teams.

<https://apnep.nc.gov/contact-us/get-involved>

Albemarle-Pamlico Estuarine System



Who We Are

PARTNERSHIPS FROM STREAM TO SOUND SINCE 1987



The Albemarle-Pamlico National Estuary Partnership brings together diverse organizations to identify how we can work together to maintain a healthy Albemarle-Pamlico region.



APNEP leads or supports partners with research studies, projects to protect or restore ecosystems, environmental monitoring programs, and education and outreach efforts.

Where We Work

THE NATION'S SECOND-LARGEST ESTUARY



With over 3,000 square miles of estuarine waters and a land area of 28,000 square miles, the Albemarle-Pamlico is the second-largest estuarine system in the United States.



The Albemarle-Pamlico watershed begins in the headwaters of the Virginia mountains and the North Carolina Piedmont, and includes a broad coastal plain as well as the string of barrier islands that border the sounds.

How We Work

OUR VISION FOR A HEALTHY ALBEMARLE-PAMLICO ESTUARINE SYSTEM



APNEP is one of 28 National Estuary Programs funded by the Environmental Protection Agency and is hosted by the North Carolina Department of Environmental Quality in collaboration with the Commonwealth of Virginia.



We take a partnership approach to accomplishing our mission. Our goals for the region's ecosystems wouldn't be possible without the collaboration of the many organizations that work alongside us.

Albemarle - Pamlico
National Estuary Partnership



217 West Jones St., Raleigh NC 27603 | (919) 707-8743



www.apnep.org



[f](#) @APSounds



apnep@ncdenr.gov