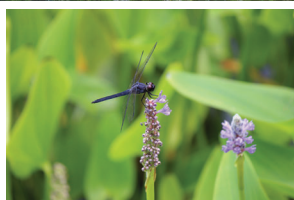
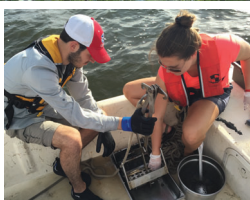
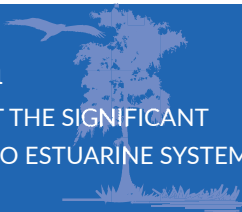


# ALBEMARLE-PAMLICO NATIONAL ESTUARY PARTNERSHIP



## Our Mission

TO IDENTIFY, RESTORE, AND PROTECT THE SIGNIFICANT  
RESOURCES OF THE ALBEMARLE-PAMLICO ESTUARINE SYSTEM



## Resources for Educators

To foster stewardship of the Albemarle-Pamlico region's natural resources, APNEP supports a variety of educational programs and initiatives in our region.

For a full lists of links to teacher resources from APNEP and other partner organizations, visit [bit.ly/apnepeducatorlinks](http://bit.ly/apnepeducatorlinks)



## Online Educator Resources

Visit our website to learn more about opportunities and resources for Albemarle-Pamlico region educators, or contact [apnep@ncdenr.gov](mailto:apnep@ncdenr.gov) for more information.



**Lesson Plan Database:** APNEP maintains a collection of estuary, coastal, watershed, and environmental lesson plans on our website: [Bit.ly/apneplessonplans](http://Bit.ly/apneplessonplans)



**River Basin Booklets:** The Albemarle-Pamlico estuarine system is made up of six river basins that flow into the sounds. APNEP has supported the NC Office of Environmental Education in developing educational materials that tell the story of these unique river basins: [Bit.ly/riverbooklets](http://Bit.ly/riverbooklets)



**Volunteering and Citizen Science:** Through our network of partners in the region, APNEP can connect interested individuals or groups with opportunities for volunteering and citizen science: <https://apnep.nc.gov/contact-us/get-involved>

## APNEP-Supported Programs

### Teacher Education and Professional Development

Since 2004, APNEP has supported a free, multi-day professional development workshop for K-12 STEM educators on the North Carolina coast. The Summer Teacher Institute is facilitated by the UNC Institute for the Environment and introduces educators to hands-on, place-based, and outdoor learning methods through interaction with some of North Carolina's most highly-regarded scientists and environmental educators.

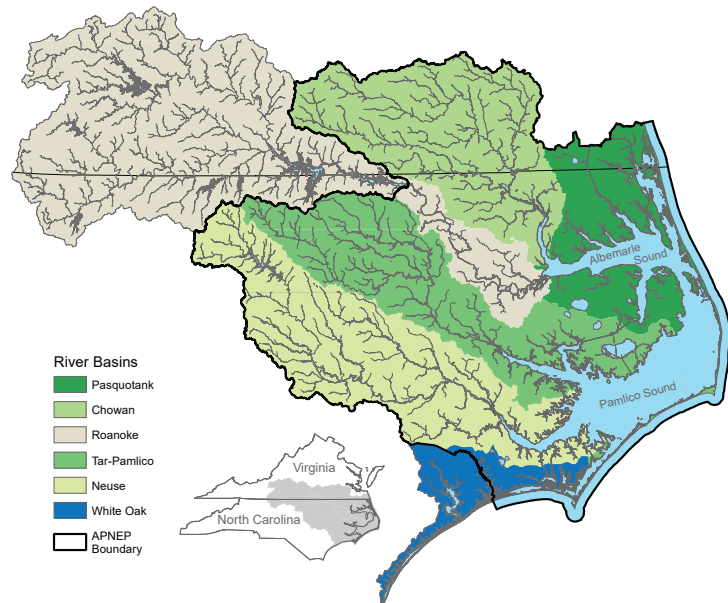
[Bit.ly/apnepteacherinstitute](http://Bit.ly/apnepteacherinstitute)

### Environmental Education Initiatives

The Shad in the Classroom program, led by the NC Museum of Natural Sciences and funded by APNEP, students gain hands-on experience raising American Shad from eggs to fry in their classrooms and then release them into back into rivers. By combining conservation, education, and the development of a personal connection to their local waterways, Shad in the Classroom aims to forge personal connections with nature and foster environmental stewardship.

[Bit.ly/shadinclassrooms](http://Bit.ly/shadinclassrooms)

## Albemarle-Pamlico Estuarine System



## Who We Are

PARTNERSHIPS FROM STREAM TO SOUND SINCE 1987



The Albemarle-Pamlico National Estuary Partnership brings together diverse organizations to identify how we can work together to maintain a healthy Albemarle-Pamlico region.



APNEP leads or supports partners with research studies, projects to protect or restore ecosystems, environmental monitoring programs, and education and outreach efforts.

## Where We Work

THE NATION'S SECOND-LARGEST ESTUARY



With over 3,000 square miles of estuarine waters and a land area of 28,000 square miles, the Albemarle-Pamlico is the second-largest estuarine system in the United States.



The Albemarle-Pamlico watershed begins in the headwaters of the Virginia mountains and the North Carolina Piedmont, and includes a broad coastal plain as well as the string of barrier islands that border the sounds.

## How We Work

OUR VISION FOR A HEALTHY ALBEMARLE-PAMLICO ESTUARINE SYSTEM



APNEP is one of 28 National Estuary Programs funded by the Environmental Protection Agency and is hosted by the North Carolina Department of Environmental Quality in collaboration with the Commonwealth of Virginia.



We take a partnership approach to accomplishing our mission. Our goals for the region's ecosystems wouldn't be possible without the collaboration of the many organizations that work alongside us.

**Albemarle - Pamlico**  
National Estuary Partnership



217 West Jones St., Raleigh NC 27603 | (919) 707-8743

 [www.apnep.org](http://www.apnep.org)   @APSounds  [apnep@ncdenr.gov](mailto:apnep@ncdenr.gov)